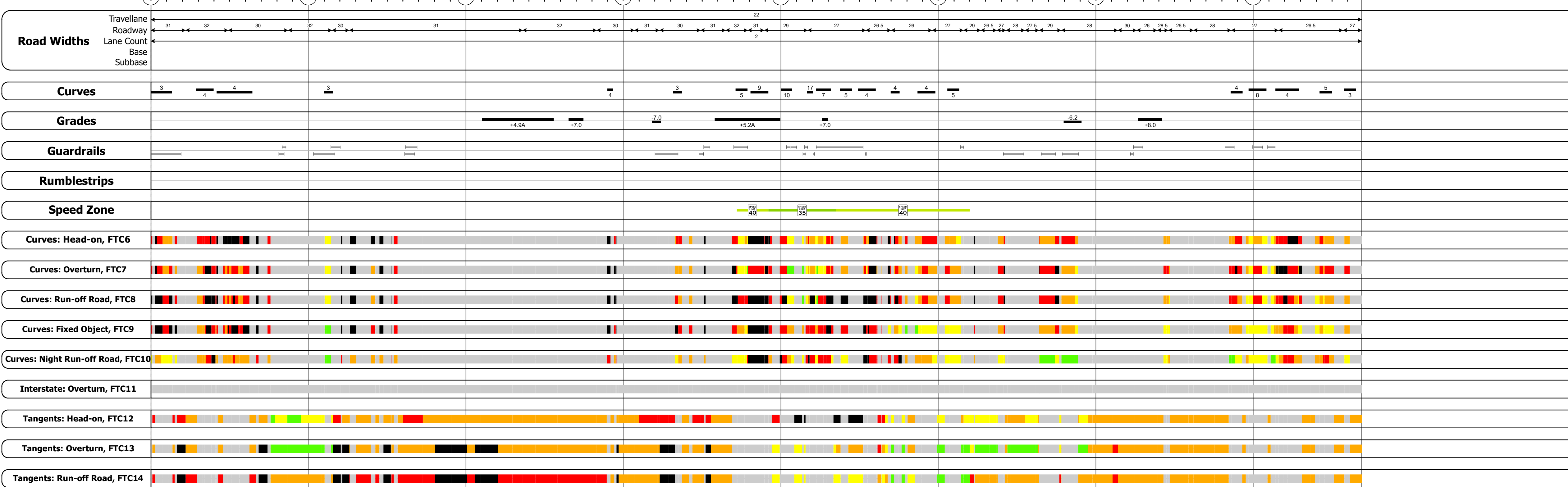
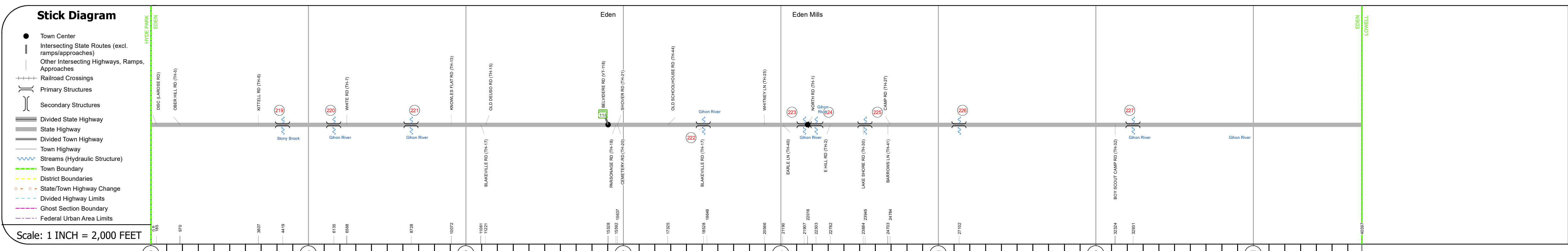
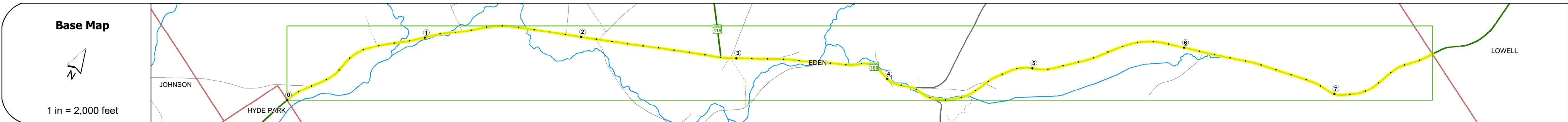
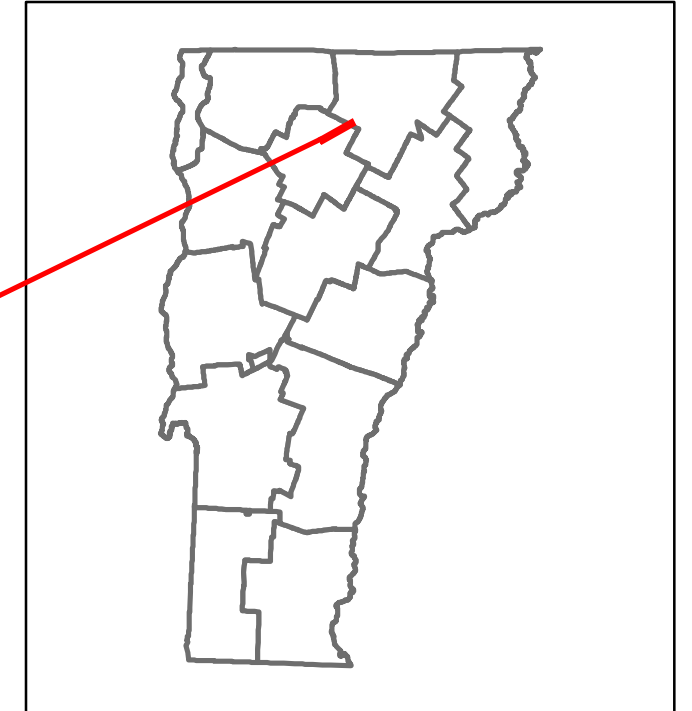


DISTRICT	TOWN	ROUTE
8	EDEN	VT-100



Risk	Primary Risk	High Risk	Medium Risk	Low Risk	Minimal Risk	Not a Focus Facility
Interstate: Overturn, FTC11						
Tangents: Head-on, FTC12						
Tangents: Overturn, FTC13						
Tangents: Run-off Road, FTC14						

Year	ADT	ADT	ADT	ADT	ADT	ADT
2022	4821		4480		2554	
2021	5586		4444		2534	
2020	5292		3493		2331	
2019	4119		3828		2400	
2018	4100	3800	3400		2400	

STRUCTURE DESCRIPTIONS

- Bridge 219:** Culvert - 1940, Structure No. 300029021908031, Length: 10', Under Clearance: 5.0', Weight Limit: 0, Facility Carried: VT100, Structure Type: RC BOX, Features Intersected: STONY BROOK, Inspection Date: 10/2022, Maintenance: State
- Bridge 220:** Tee Beam - 1932, Structure No. 200029022008032, Length: 33', Height: 100.0', Width: 31.0', Weight Limit: 0, Facility Carried: VT 00100 ML, Structure Type: TBEAM WIDE W/ ROL BM, Features Intersected: GHON RIVER, Surface: Bituminous, Inspection Date: 4/2023, Maintenance/Ownership: State
- Bridge 221:** Tee Beam - 1932, Structure No. 200029022108032, Length: 29', Height: 100.0', Width: 31.0', Weight Limit: 0, Facility Carried: VT 00100 ML, Structure Type: TBEAM WIDE W/ ROL BM, Features Intersected: GHON RIVER, Surface: Bituminous, Inspection Date: 9/2021, Maintenance/Ownership: State
- Bridge 222:** Tee Beam - 1929, Structure No. 200029022208032, Length: 39', Height: 100.0', Width: 31.0', Weight Limit: 0, Facility Carried: VT 00100 ML, Structure Type: TBEAM WIDE W/ ROL BM, Features Intersected: GHON RIVER, Surface: Bituminous, Inspection Date: 9/2021, Maintenance/Ownership: State
- Bridge 223:** Slab - 1931, Structure No. 200029022308032, Length: 23', Height: 100.0', Width: 30.0', Weight Limit: 0, Facility Carried: VT 00100 ML, Structure Type: CONCRETE SLAB, Features Intersected: GHON RIVER, Surface: Bituminous, Inspection Date: 9/2021, Maintenance/Ownership: State
- Bridge 224:** Slab - 1931, Structure No. 200029022408032, Length: 23', Height: 100.0', Width: 31.0', Weight Limit: 0, Facility Carried: VT 00100 ML, Structure Type: CONCRETE SLAB, Features Intersected: GHON RIVER, Surface: Bituminous, Inspection Date: 9/2021, Maintenance/Ownership: State
- Bridge 225:** Culvert - 1952, Structure No. 300029022508031, Length: 20', Under Clearance: 9.0', Weight Limit: 0, Facility Carried: VT100, Structure Type: CGMPPA, Features Intersected: GHON RIVER, Surface: Bituminous, Inspection Date: 10/2022, Maintenance: State
- Bridge 226:** Culvert - 2020, Structure No. 300029022608031, Length: 11', Under Clearance: 7.0', Weight Limit: 0, Facility Carried: VT100, Structure Type: CGMPPA, Features Intersected: BROOK, Inspection Date: 10/2022, Maintenance: State

Historic Projects Unknown, Retreatment, Resurface, Bituminous Mix, Skiny Mix, Bituminous Seal Bituminous Concrete, Cold Plane and Expressways, Concrete, Reclaimed Base and Bituminous Concrete, Surface Treated Gravel, Plant Mix	Functional Class 1- Interstate System, 2- Other Freeways and Expressways, 3- Principal Arterial, 4- Minor Arterial, 5- Major Collector, 6- Minor Collector	Curves Left (design), Right (design) Grades (design) grade up, (design) grade down Road Widths (ft)	Traffic Counters Continuous (CTC), Weigh-In-Motion (WIM), Short-Term, Scheduled, Short-Term, Unscheduled (counter ID) Crash Locations Fatal, Injury, Property Damage Only, Unknown Crash Type High Crash Locations (HCL's) Sections (& Intersections) HCL No. 1-100 (1-10), 101-200 (11-20), 201-300 (21-30), 301-400 (31-40), 401-800 (41-113)	Mileage by Functional Class By Sheet 029-2 4 - Minor Arterial 7.689 Mileage by Town By Sheet EDEN - V100-0803 7.689 of 7.689	DISTRICT 8 TOWN EDEN Date: 02/15/24 ROUTE VT-100 ETE mileage: 168.626 to 176.315
---	--	---	--	---	---