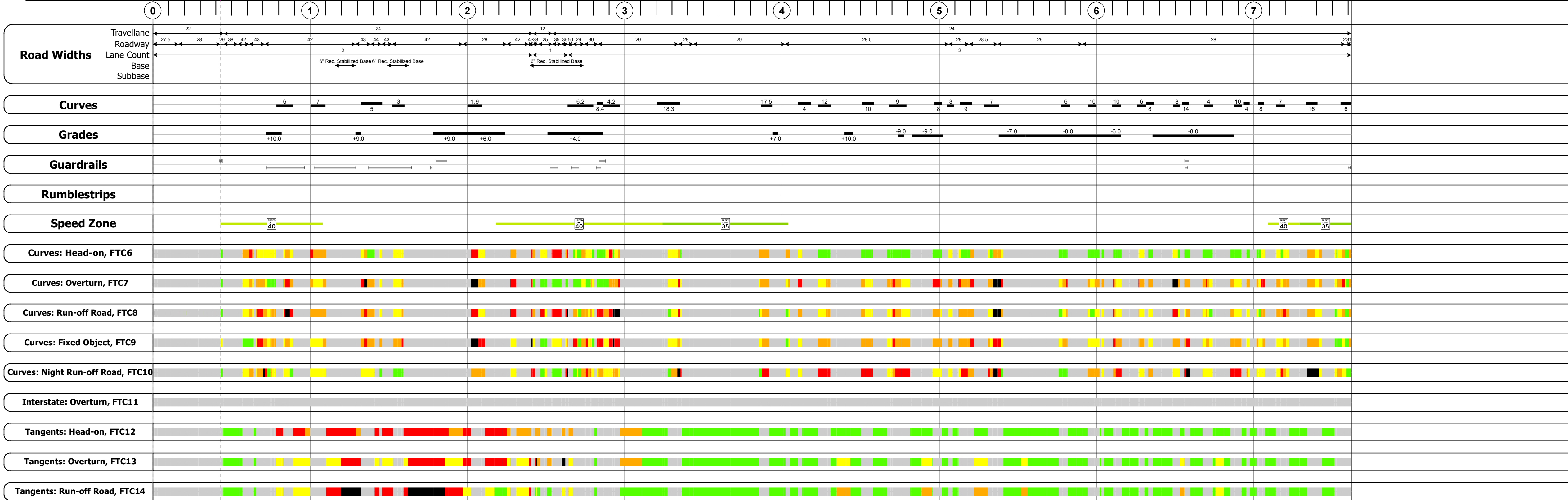
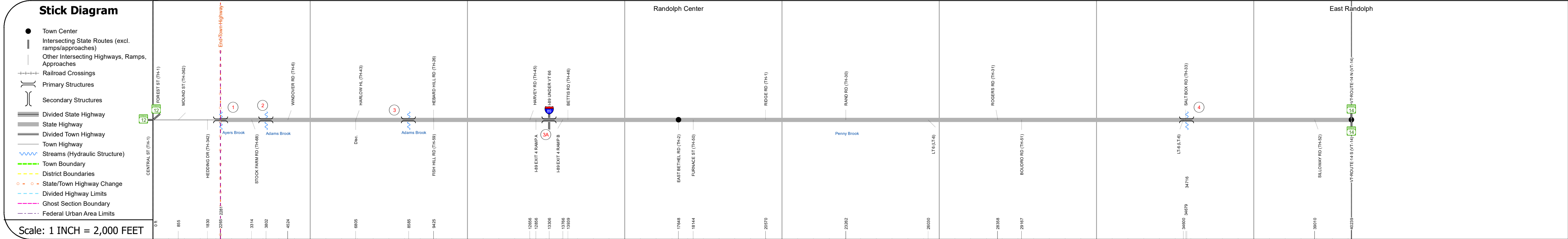
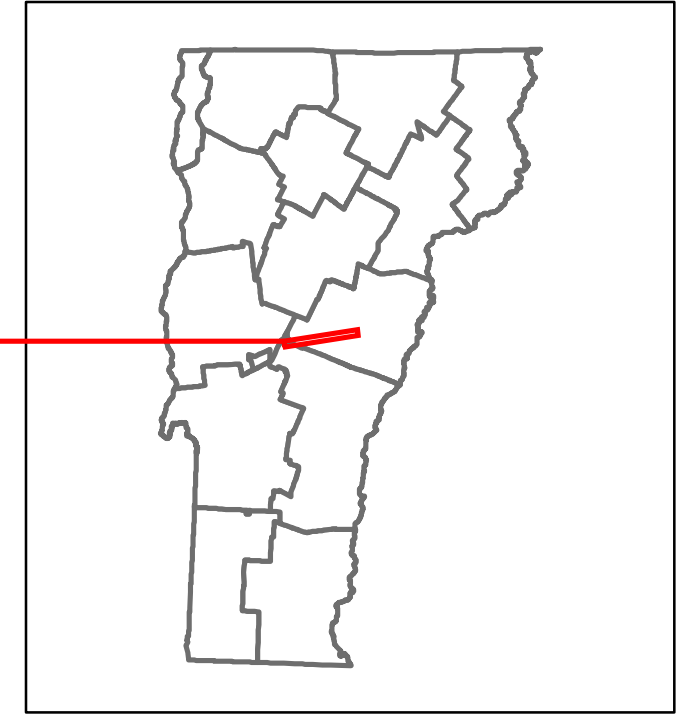


DISTRICT	TOWN	ROUTE
4	RANDOLPH	VT-66



Year	Station 0+00	Station 1+00	Station 2+00	Station 3+00	Station 4+00	Station 5+00	Station 6+00	Station 7+00
2022	6135	4309	3548	2467				1020
2021	5913	4756	3599	2442				1012
2020	5219	3968	3165	2155				893
2019	6162	4685	3760	2544				1054
2018	7000	6600	6500	4900	3700	3800		2500

STRUCTURE DESCRIPTIONS

Bridge 1:
Stringer/multi-beam or girder - 1928
Structure No. 200190000109092
Length: 34'
Height: 100.0'
Width: 32.0'
Weight Limit: 0
Facility Carried: VT 66 ML
Structure Type: ROLLED BEAM
Features Intersected: AYERS BROOK
Surface: Bituminous
Inspection Date: 7/2021
Maintenance/Ownership: Town

Bridge 2:
Culvert - 1963
Structure No. 300190000209091
Length: 12'
Under Clearance: 13.0'
Weight Limit: 0
Facility Carried: VT66
Structure Type: CGMPP
Features Intersected: ADAMS BROOK
Surface: Bituminous
Inspection Date: 11/2022
Maintenance: State

Bridge 3:
Culvert - 1963
Structure No. 300190000309091
Length: 9'
Under Clearance: 10.0'
Weight Limit: 0
Facility Carried: VT66
Structure Type: CGMPP
Features Intersected: ADAMS BROOK
Surface: Bituminous
Inspection Date: 11/2022
Maintenance: State

Bridge 3A:
Stringer/multi-beam or girder - 1968
Structure No. 2001900003A09092
Length: 214'
Height: 100.0'
Width: 54.0'
Under Clearance: 16.0'
Weight Limit: 0
Facility Carried: VT 66 ML
Structure Type: 2 SP CONT ROLLED BM
Features Intersected: 1.89 UNDER VT 66
Surface: Bituminous
Inspection Date: 5/2022
Maintenance/Ownership: State

Bridge 4:
Culvert - 1951
Structure No. 300190000409091
Length: 6'
Under Clearance: 6.0'
Weight Limit: 0
Facility Carried: VT66
Structure Type: ACCGMPP
Features Intersected: BROOK
Inspection Date: 10/2022
Maintenance: State

Historic Projects <ul style="list-style-type: none"> Unknown Retreatment Resurface Bituminous Mix Skiny Mix Bituminous Seal 	Functional Class <ul style="list-style-type: none"> 1 - Interstate System 2 - Other Freeways and Expressways 3 - Principal Arterial 4 - Minor Arterial 5 - Major Collector 6 - Minor Collector 	Crash Locations <ul style="list-style-type: none"> Fatal Injury Property Damage Only Unknown Crash Type 	Mileage by Functional Class By Sheet 0190 5 - Major collector 7.621	Mileage by Town By Sheet RANDOLPH - V066-0909 7.621 of 7.621	DISTRICT 4	TOWN RANDOLPH	Date: 04/04/24	ROUTE VT-66 ETE mileage: 0.0 to 7.621
Crash Locations (HCL's) Sections (& Intersections) 1-100 (1-10) 201-300 (21-30) 101-200 (11-20) 401-800 (41-113)				Page Total Mileage: 7.621 mi		Page Total Mileage: 7.621 mi		