

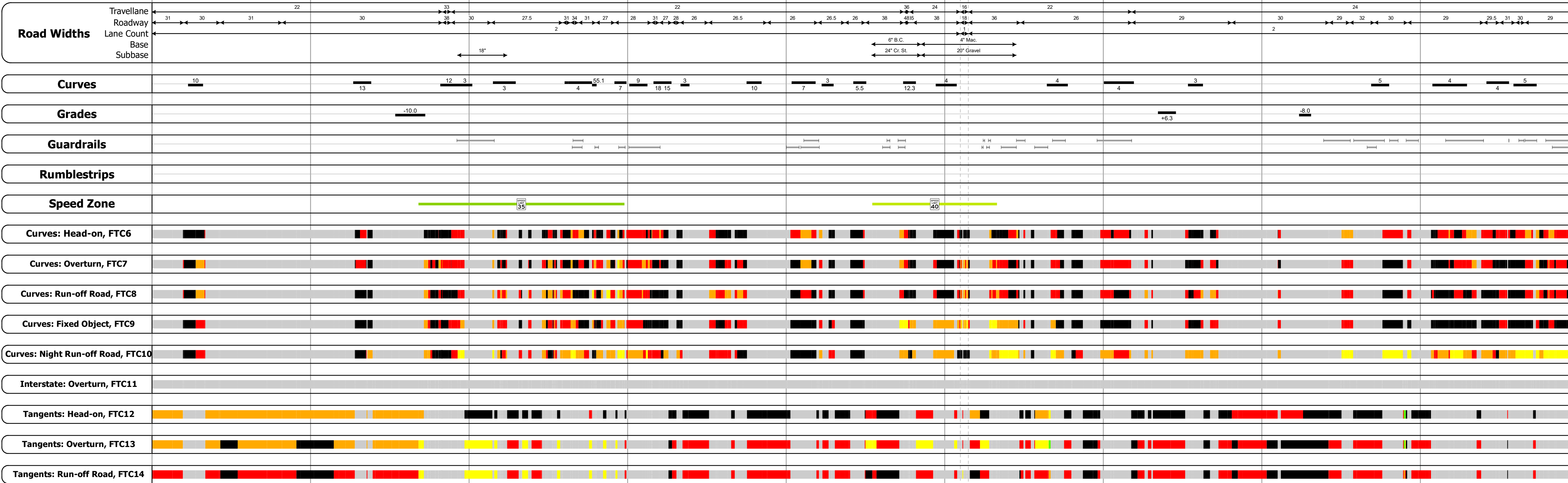
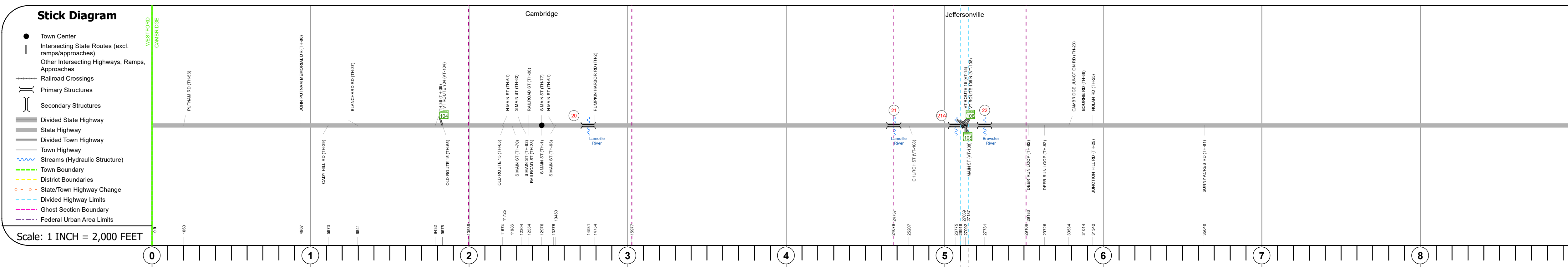
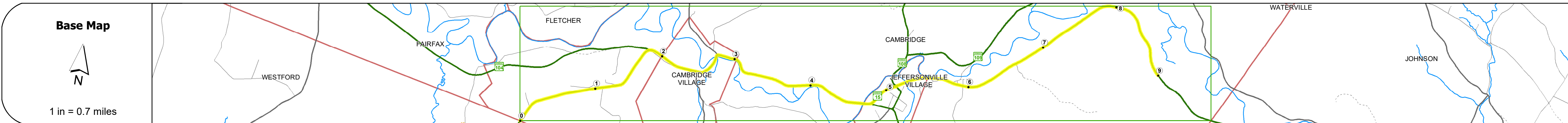
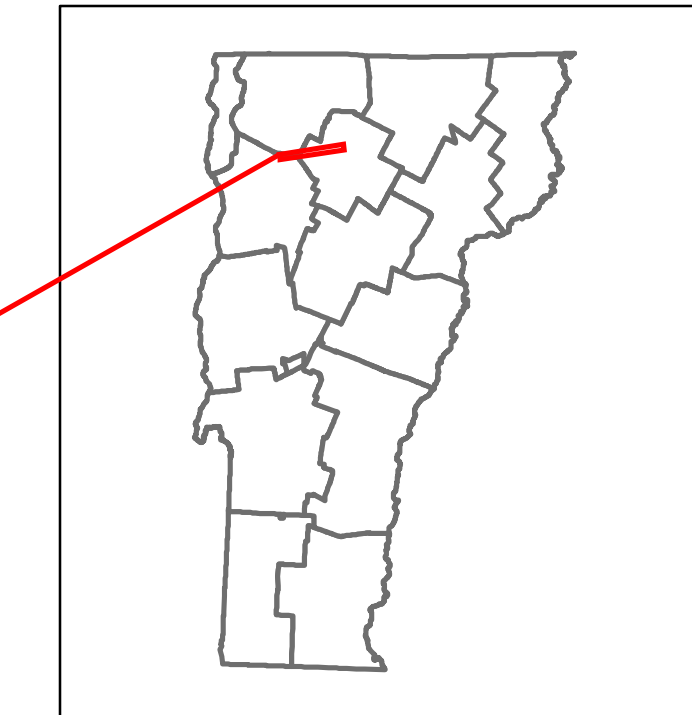


# Route Log and Progress Chart

**DRAFT**

Please Note: Errors and Omissions May Exist.  
Contact the VTrans Mapping Section with questions or concerns.

DISTRICT	TOWN	ROUTE
8	CAMBRIDGE	VT-15



Year	Station 0	Station 1	Station 2	Station 3	Station 4	Station 5	Station 6	Station 7	Station 8	Station 9
2022	4116				8118				6894	6164
2021	4169				8054				6839	6115
2020	3680				7109				5628	5230
2019	4345				8393				6645	6175
2018	4300	8200	8400		8300				6600	6000

### STRUCTURE DESCRIPTIONS

- Bridge 20:** Stringer/multi-beam or girder - 1950  
Structure No: 200030002008022  
Length: 399'  
Height: 100.0'  
Width: 37.0'  
Weight Limit: 0  
Facility Carried: VT 15 ML  
Structure Type: 5 SPAN ROLLED BEAM  
Features Intersected: LAMOILLE RIVER  
Surface: Bituminous  
Inspection Date: 9/2021  
Maintenance/Ownership: State
- Bridge 21:** Stringer/multi-beam or girder - 1991  
Structure No: 200030002108022  
Length: 259'  
Height: 100.0'  
Width: 39.0'  
Weight Limit: 0  
Facility Carried: VT 15 ML  
Structure Type: 3 SP CONT WLD GIRDER  
Features Intersected: LAMOILLE RIVER  
Surface: Bituminous  
Inspection Date: 9/2021  
Maintenance/Ownership: State
- Bridge 21A:** Culvert - 2019  
Structure No: 3000300021A08022  
Length: 22'  
Under Clearance: 4.0'  
Weight Limit: 0  
Facility Carried: VT 15  
Structure Type: PRECAST RC BOX  
Features Intersected: DRY CROSSING/RELIEF  
Inspection Date: 12/2021  
Maintenance/Ownership: State
- Bridge 22:** Stringer/multi-beam or girder - 1959  
Structure No: 200030002208022  
Length: 118'  
Height: 100.0'  
Width: 30.0'  
Weight Limit: 0  
Facility Carried: VT 15 ML  
Structure Type: 2 SPAN ROLLED BEAM  
Features Intersected: BREWSTER RIVER  
Surface: Bituminous  
Inspection Date: 9/2021  
Maintenance/Ownership: State

<b>Historic Projects</b> <ul style="list-style-type: none"> <li>Unknown</li> <li>Retreatment</li> <li>Resurface</li> <li>Bituminous Mix</li> <li>Skinny Mix</li> <li>Bituminous Seal</li> </ul>	<b>Functional Class</b> <ul style="list-style-type: none"> <li>1 - Interstate System</li> <li>2 - Other Freeways and Expressways</li> <li>3 - Principal Arterial</li> <li>4 - Minor Arterial</li> <li>5 - Major Collector</li> <li>6 - Minor Collector</li> </ul>	<b>Curves</b> <ul style="list-style-type: none"> <li>Left (align)</li> <li>Right (align)</li> </ul>	<b>Grades</b> <ul style="list-style-type: none"> <li>Left (align) grade up</li> <li>Right (align) grade down</li> </ul>	<b>Traffic Counters</b> <ul style="list-style-type: none"> <li>Continuous (CTC)</li> <li>Weigh-In-Motion (WIM)</li> <li>Short-Term, Scheduled</li> <li>Short-Term, Unscheduled</li> </ul>	<b>Crash Locations</b> <ul style="list-style-type: none"> <li>Fatal</li> <li>Injury</li> <li>Property Damage Only</li> <li>Unknown Crash Type</li> </ul>	<b>Mileage by Functional Class By Sheet</b> 030-2 4 - Minor Arterial: 7.074 030-1 4 - Minor Arterial: 1.926	<b>Mileage by Town By Sheet</b> CAMBRIDGE - V015-0802: 9.0 of 9.833	<b>DISTRICT</b> 8	<b>TOWN</b> CAMBRIDGE	<b>Date:</b> 04/03/24	<b>ROUTE</b> VT-15 ETE mileage: 21.805 to 30.805	
<b>AADT</b> (Annual Average Daily Traffic)						<b>High Crash Locations (HCL's)</b> (Sections & Intersections) HCL No: 201 - 300 (21 - 30) 1 - 100 (1 - 10) 101 - 200 (11 - 20) 401 - 800 (41 - 113)	<b>Page Total Mileage:</b> 9.000 mi	<b>Page Total Mileage:</b> 9.0 mi	<b>DISTRICT</b> 8	<b>TOWN</b> CAMBRIDGE	<b>Date:</b> 04/03/24	<b>ROUTE</b> VT-15 ETE mileage: 21.805 to 30.805

For More Information Contact - Vermont Agency of Transportation, Policy, Planning and Intermodal Development Division - Mapping Section, 219 North Main Street, Barre, VT 05641 Telephone: 802-828-2600.