

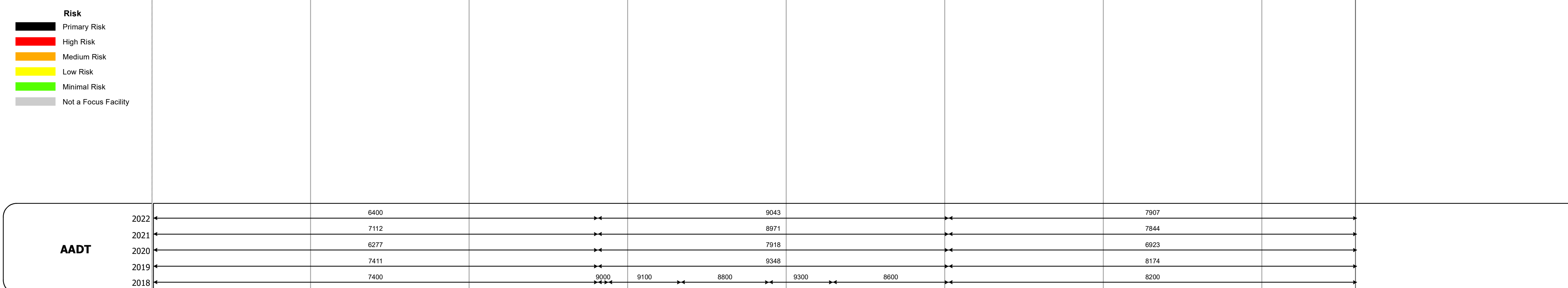
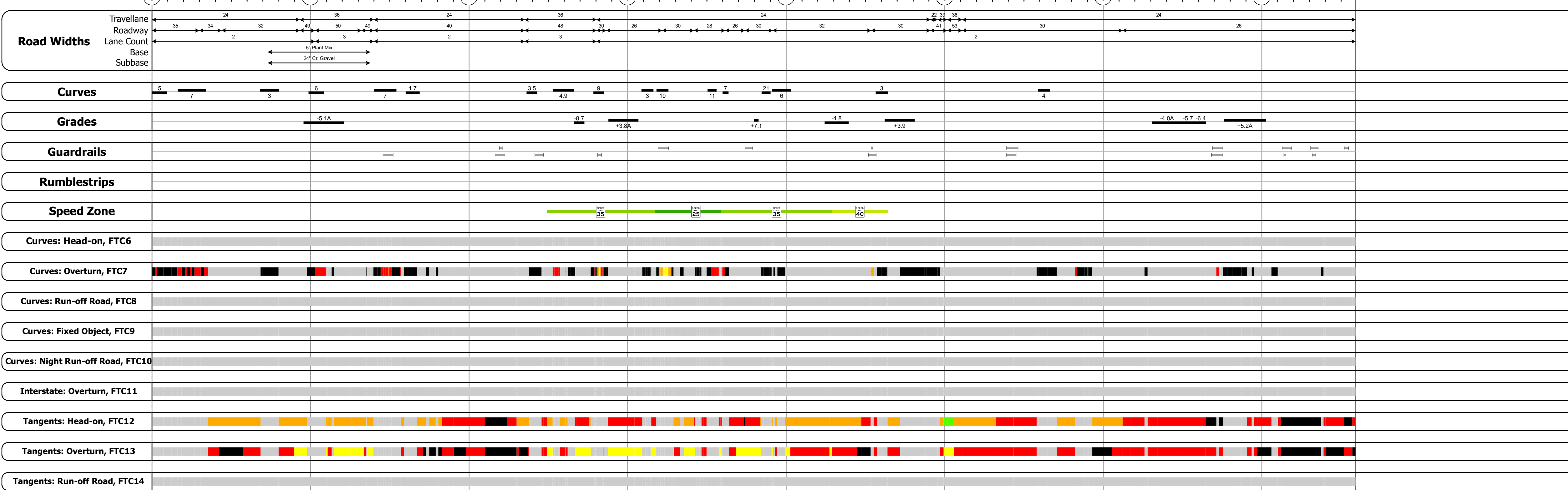
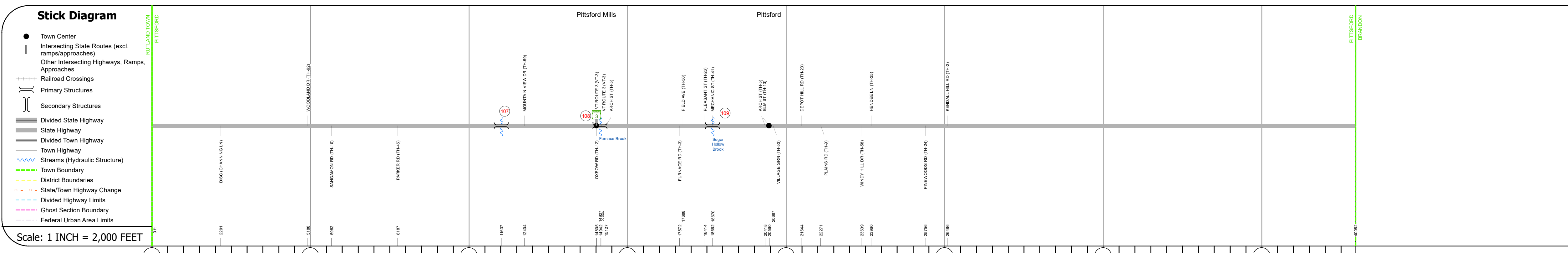
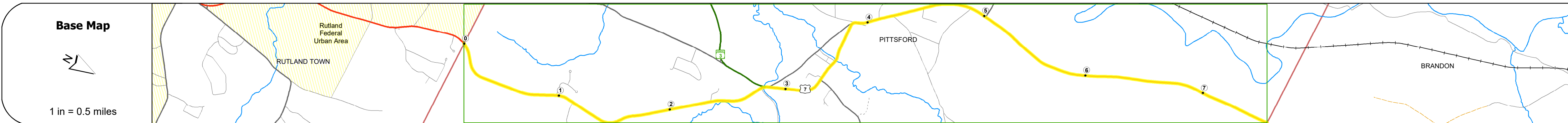
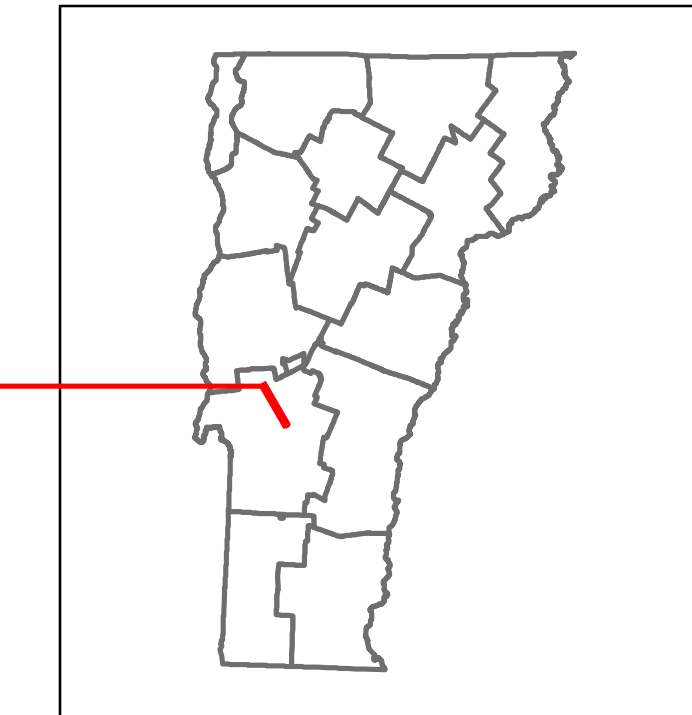


Route Log and Progress Chart

DRAFT

Please Note: Errors and Omissions May Exist.
Contact the VTrans Mapping Section with questions or concerns.

DISTRICT	TOWN	ROUTE
3	PITTSFORD	US-7



STRUCTURE DESCRIPTIONS

Bridge 107:
Culvert - 2022
Structure No. 300019010711161
Length: 11'
Under Clearance: 6.0'
Weight Limit: 0
Facility Carried: US7
Structure Type: RC BOX
Features Intersected: BROOK
Inspection Date: 1/2023
Maintenance: State

Bridge 108:
Tee Beam - 1931
Structure No. 200019010811162
Length: 102'
Height: 100.0'
Width: 42.0'
Weight Limit: 0
Facility Carried: US 07 ML
Structure Type: 2 SP CONCRETE T-BEAM
Features Intersected: FURNACE BROOK
Surface: Bituminous
Inspection Date: 5/2023
Maintenance/Ownership: State

Bridge 109:
Culvert (Arch) - 1889
Structure No. 200019010911162
Length: 65'
Height: 100.0'
Width: 33.0'
Weight Limit: 0
Facility Carried: US 07 ML
Structure Type: MASONRY ARCH
Features Intersected: SUGAR HOLLOW BROOK
Inspection Date: 5/2023
Maintenance/Ownership: State

Historic Projects Unknown, Retreatment, Resurface, Bituminous Mix, Skiny Mix, Bituminous Seal Bituminous Concrete, Bituminous Macadam, Cold Plane and, Bituminous Concrete, Concrete, Surface Treated Gravel, Plant Mix, Reclaimed Base and Bituminous Concrete	Functional Class 1 - Interstate System, 2 - Other Freeways and Expressways, 3 - Principal Arterial, 4 - Minor Arterial, 5 - Major Collector, 6 - Minor Collector	Curves Left (degrees), Right (degrees) Grades (degrees) grade up, (degrees) grade down Road Widths (ft)	Traffic Counters Continuous (CTC), Weigh-In-Motion (WIM), Short-Term, Scheduled, Short-Term, Unscheduled (counter ID)	Crash Locations Fatal, Injury, Property Damage Only, Unknown Crash Type High Crash Locations (HCL's) HCL No. 1-100 (1-10), 101-200 (11-20), 201-300 (21-30), 301-400 (31-40), 401-800 (41-113)	Mileage by Functional Class By Sheet 019-3 3 - Other Principal Arterial 7.591	Mileage by Town By Sheet PITTSFORD - U007-1116 7.591 of 7.591	DISTRICT 3	TOWN PITTSFORD	Date: 04/02/24	ROUTE US-7 ETE mileage: 70.254 to 77.845
					AADT 25, 30, 35, 40, 45, 50, 55, 60, 65	Page Total Mileage: 7.591 mi	Page Total Mileage: 7.591 mi	1 of 1 TWN mileage: 0.0 to 7.591		

Indicated plans available - <http://vtransmap01.aot.state.vt.us/pldbr/DWebstore/>
 For More Information Contact - Vermont Agency of Transportation, Policy, Planning and Intermodal Development Division - Mapping Section, 219 North Main Street, Barre, VT 05641 Telephone: 802-828-2600.