

TOWN HWY. NO.	LENGTH IN MILES CLASS 3	LENGTH IN MILES CLASS 4						
7	2.51		50	0.16		92	0.17	
8	0.11		51		(0.11)	93		(0.16)
10	1.09	(0.09)	52	0.89		94	0.13	
11	0.60		53	1.49		96	0.50	
12	2.36	(1.55)	54	1.87		97		(0.07)
13	0.24		55	0.20		98	0.27	
16	1.56		56	0.78		99	0.28	
17	0.80		57	0.20		100	0.09	
19	0.21		58	0.15		102	0.24	
20	0.91	(1.94)	59	1.14		103	0.12	
21	0.84		60		(0.28)	104	0.14	
22	0.85		61	0.69		105	0.04	
23	2.92		63	0.80		106	0.33	
24	1.10		64	0.95		107	0.03	
26	0.10		65	0.80		108	0.09	
28	0.35		66	1.25	(0.78)	109	0.17	
29	0.69	(0.19)	67		(0.06)	110	0.19	
30	0.98		68	0.33		111	0.34	
31	0.90		69	0.12		114	0.17	
32	0.52		70	0.60		115	0.08	
33	0.27		71		(0.08)	116		(0.27)
34	0.56	(0.74)	72	0.16		117	0.23	
35	2.91		74	0.98		118	0.27	
36	1.70		75	1.88		119		(0.90)
37	0.92	(0.60)	77	0.61		120		(0.10)
38	0.13	(1.80)	78	0.25		121	0.13	
39	0.22	(0.39)	79	0.03		122	1.10	
40	0.75		80	0.17		123		(0.19)
41		(0.20)	82		(0.07)	124	0.70	
42		(0.41)	83	0.04		125		(0.40)
43	0.05		84	0.23		126		(0.03)
44	0.45		85	0.20		127		(0.05)
45	1.65		86	0.06		128		
46		(0.45)	87	0.38		129	2.07	
47	1.22		88	0.05		130	1.09	(0.18)
48	0.60		89	0.04		131		(0.16)
49	1.81		91	0.25		132		(0.12)
						133		(0.94)
<b>TOTAL</b>	<b>59.60</b>	<b>14.15</b>	<b>TOTAL</b>	<b>59.60</b>	<b>14.15</b>	<b>TOTAL</b>	<b>0.39</b>	

**MILEAGE SUMMARY**

CLASS 2		
TH-1	0.880	
TH-2	0.110	
TH-3	2.430	
TH-4	3.970	
TH-5	1.790	
TH-6	1.200	
<b>TOTAL CLASS 2</b>	<b>10.380</b>	
CLASS 3		
<b>TOTAL CLASS 3</b>	<b>59.600</b>	
<b>TOTAL TOWN</b>	<b>69.980</b>	
STATE HIGHWAY		
VT-12	3.298	
VT-106	6.553	
<b>TOTAL STATE HIGHWAY</b>	<b>9.851</b>	
US HIGHWAY		
US-4	8.074	
<b>TOTAL US HIGHWAY</b>	<b>8.074</b>	
<b>TOTAL STATE</b>	<b>17.925</b>	

**TOTAL, TRAVELED HIGHWAYS, FEB. 10, 2011: 87.905**  
 (Excludes Class 4, Legal Trail, and Unidentified Corridor Mileage)

- HIGHWAYS**
- INTERSTATE
  - U.S. ROUTE
  - STATE ROUTE
  - CLASS 1
  - CLASS 2
  - CLASS 3
  - CLASS 4
  - LEGAL TRAIL
  - INTERSTATE OR DIVIDED HIGHWAY
  - STATE - HARD SURFACE OR PAVED
  - TOWN - HARD SURFACE OR PAVED
  - GRAVEL
  - SOIL OR GRADED AND DRAINED EARTH
  - UNIMPROVED OR PRIMITIVE
  - IMPASSABLE OR UNTRAVELED
  - LEGAL TRAIL
  - DISCONTINUED
  - HIGHWAY CLASS CHANGE
  - RAILROAD
  - INACTIVE RAILROAD

- POLITICAL SUBDIVISIONS**
- STATE BOUNDARY
  - COUNTY BOUNDARY
  - TOWN BOUNDARY
  - VILLAGE BOUNDARY
  - URBAN COMPACT BOUNDARY
  - WATER BODY
  - STREAM OR BROOK
  - BRIDGE OR CULVERT
    - BRIDGE OR CULVERT GREATER THAN 20'
    - BRIDGE OR CULVERT 6' - 20'
    - TOWN SHORT STRUCTURE
  - STATE BRIDGE OR CULVERT IDENTIFIER
  - TOWN BRIDGE OR CULVERT IDENTIFIER
- FEDERAL CLASSIFICATION IDENTIFIER**
- FAU URBAN ARTERIAL OR COLLECTOR
  - MA MINOR ARTERIAL
  - MJC MAJOR COLLECTOR
  - MNC MINOR COLLECTOR
  - PA PRINCIPAL ARTERIAL

**STRUCTURES - SURFACE WATER NOTE:**

**STRUCTURES:**  
 Town short structures (bridges or culverts from 6-feet to less than 20-feet) are drawn from the Vermont Online Bridge & Culvert Inventory Tool (VOBCIT) database.  
 NOTE: Town shorts are not consistently tagged within VOBCIT.

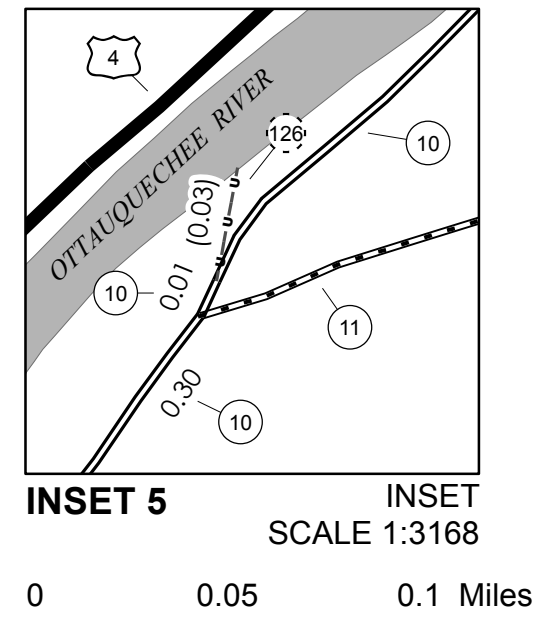
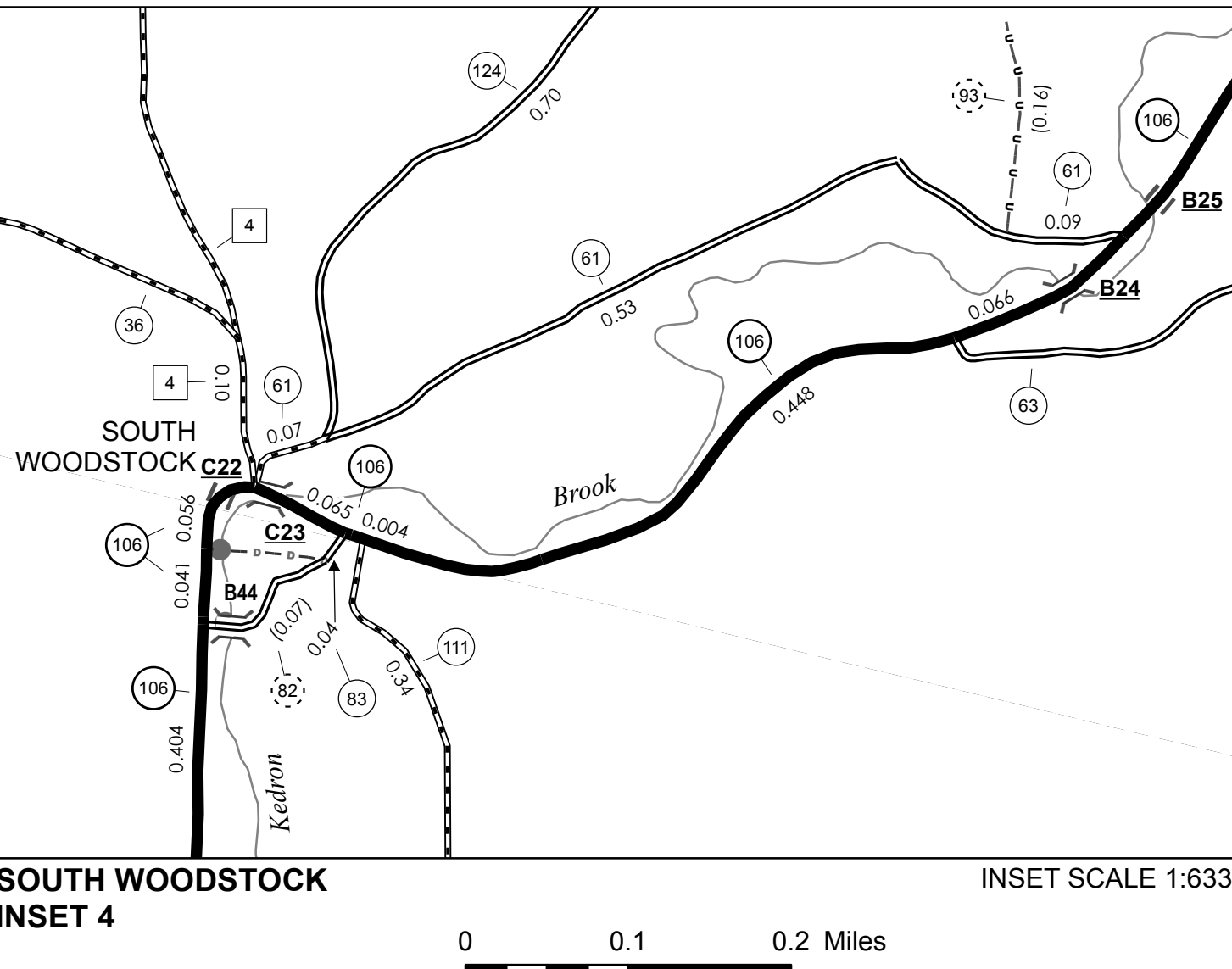
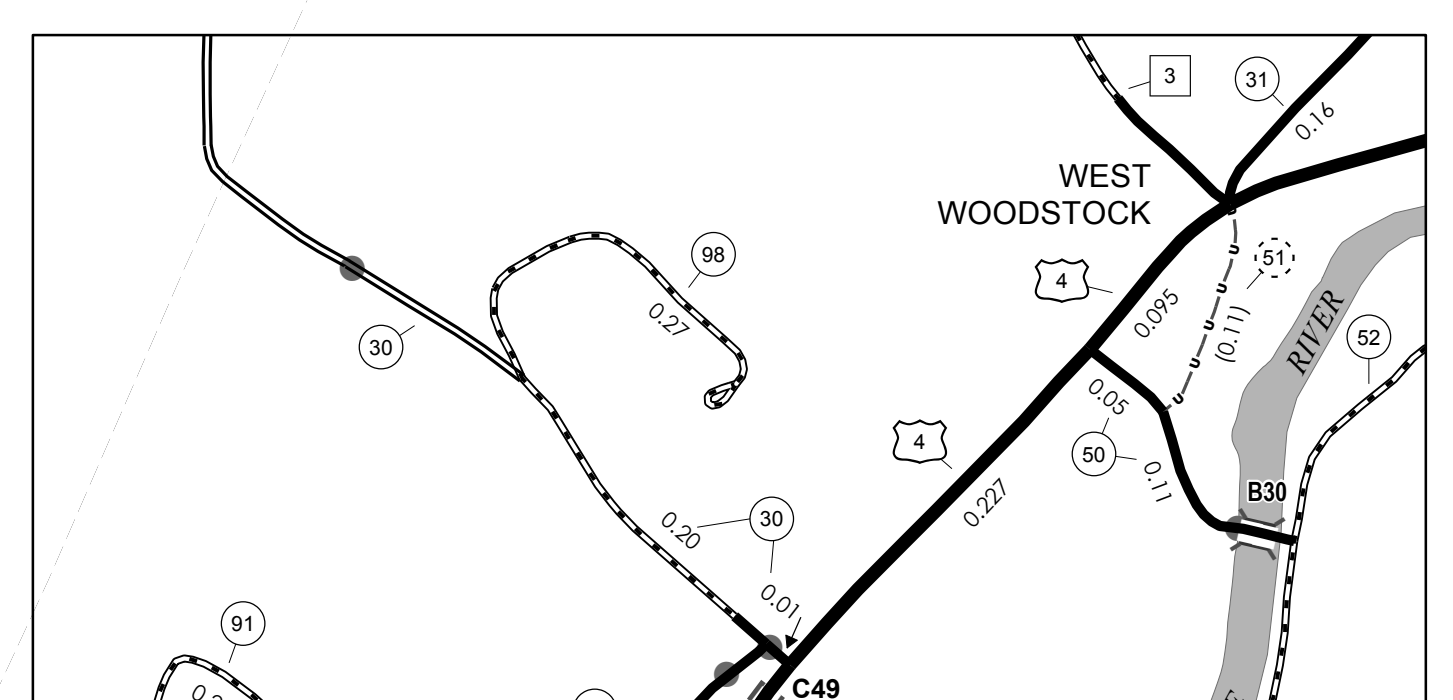
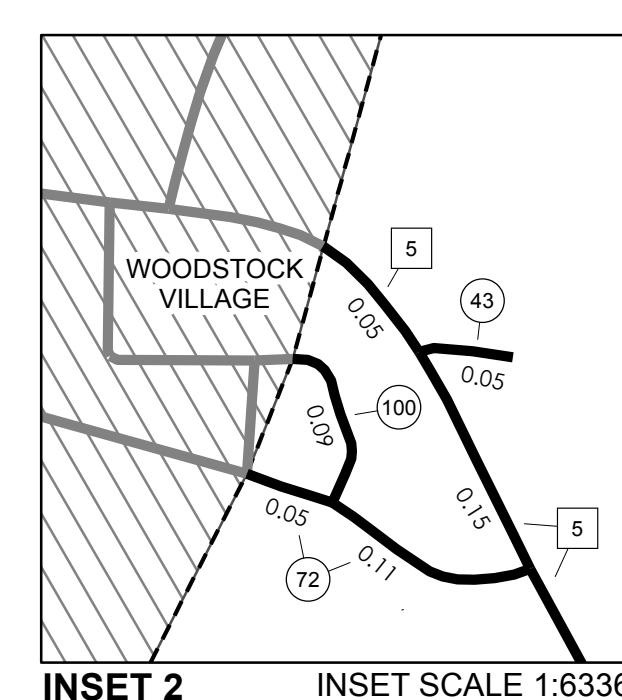
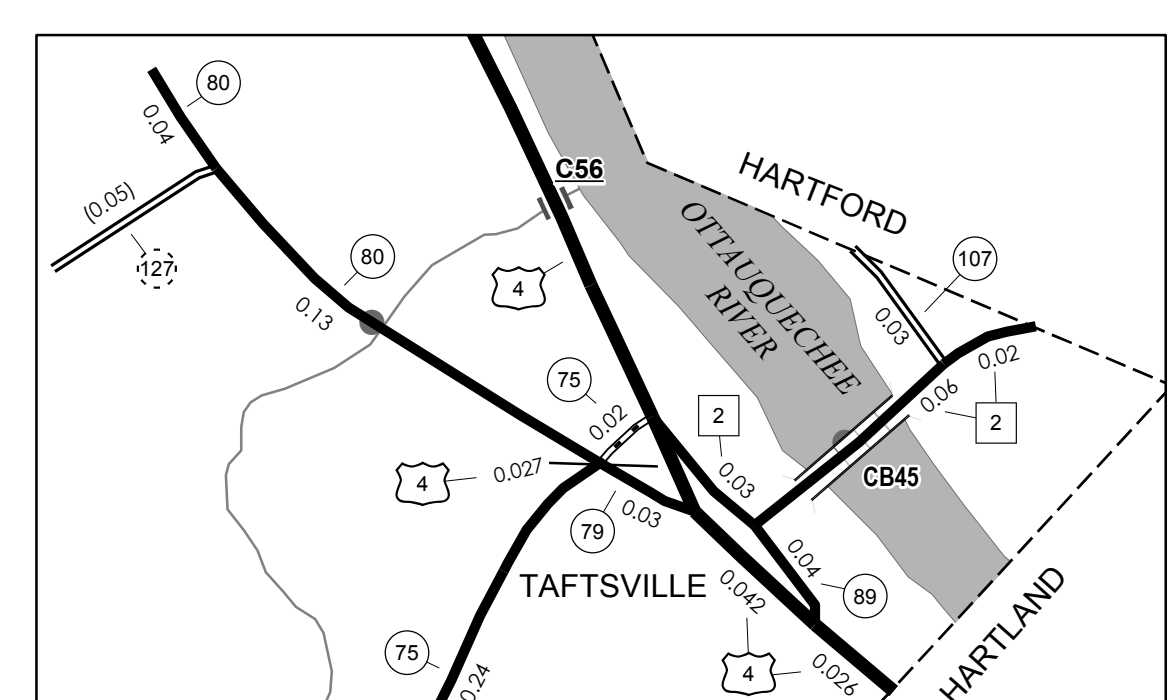
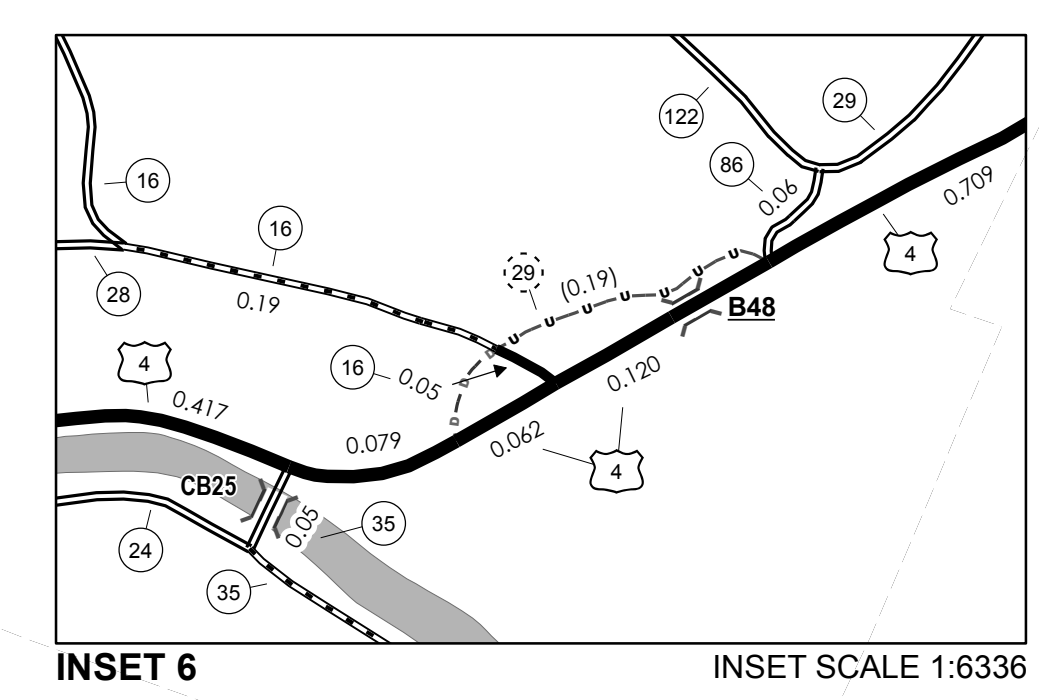
**SURFACE WATERS:**  
 The surface waters are from the Vermont Hydrological Dataset (VHD). Only the named streams are shown.

**DISCLAIMER:**

The untraveled highways (laid-out town highways), discontinued highways, and legal trails shown hereon are those of which the Agency of Transportation has record; others may exist.

Highway and bridge data by the Agency of Transportation. All other data from the Vermont Center for Geographic Information.

Vermont State Plane Coordinate System  
 North American Datum of 1983  
 SPCS Zone Identifier: 4400  
 Geodetic Reference System 80  
 4,000-meter grid, Easting - Northing



**VERMONT GENERAL HIGHWAY MAP**  
**Town of Woodstock**

WINDSOR COUNTY

Transportation District #4

Prepared by the  
 Vermont Agency of Transportation  
 Division of Policy, Planning & Intermodal Development  
 in cooperation with  
 U.S. Department of Transportation  
 Federal Highway Administration

Mileage as of February 10, 2011  
 Map prepared October 24, 2011

SCALE 1:31,680

