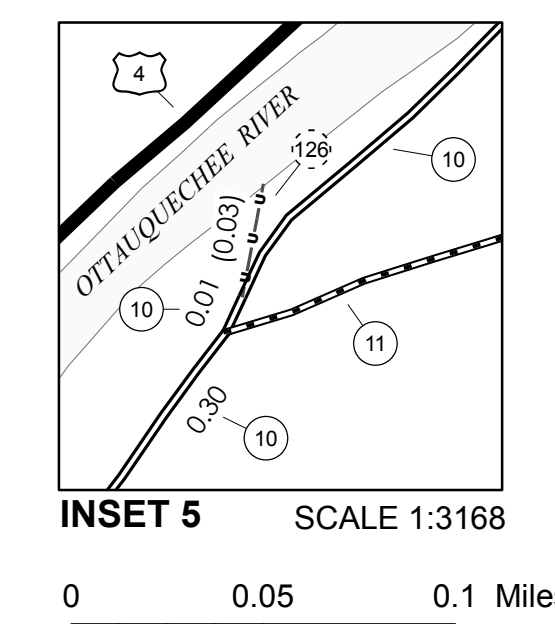
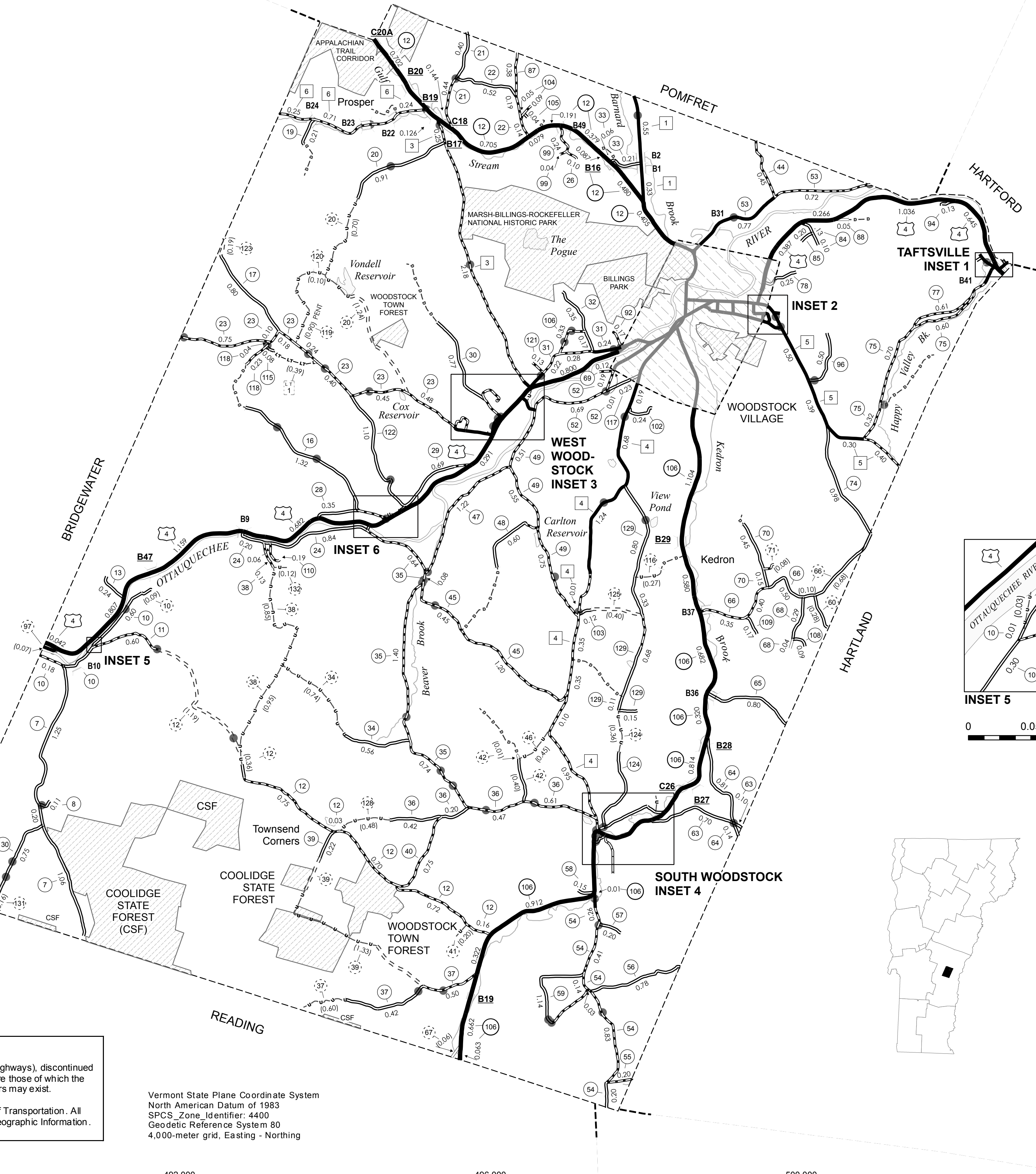
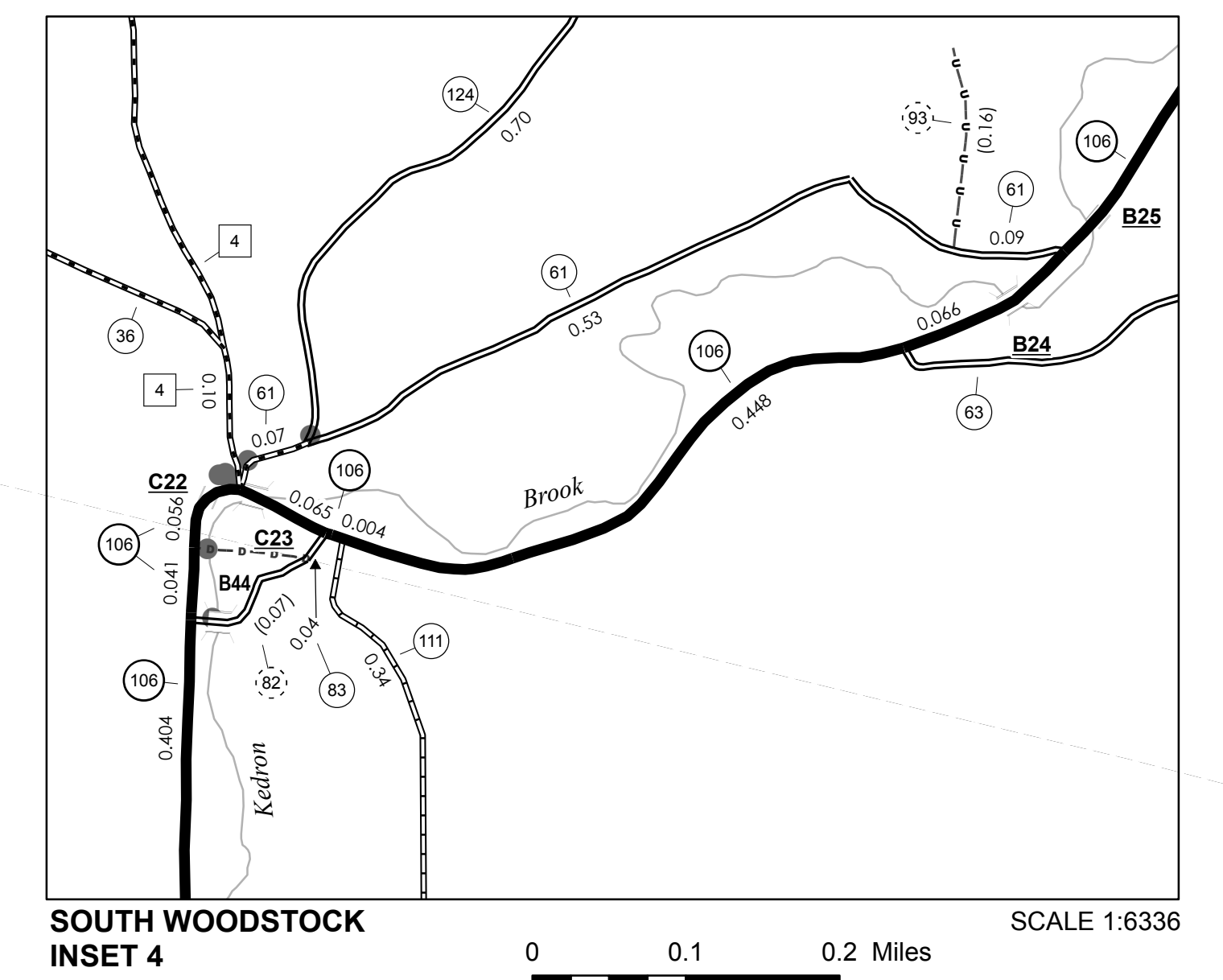
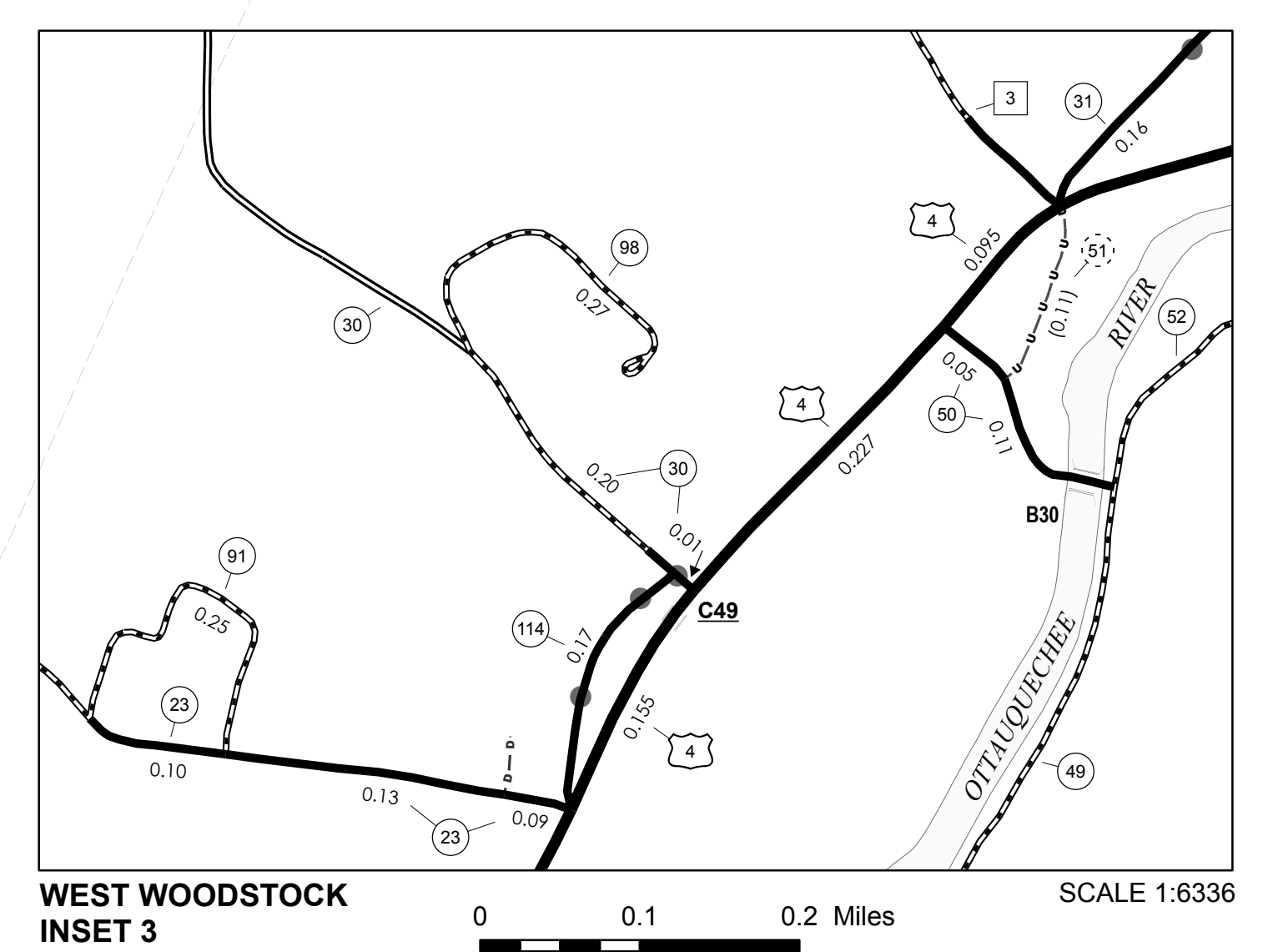
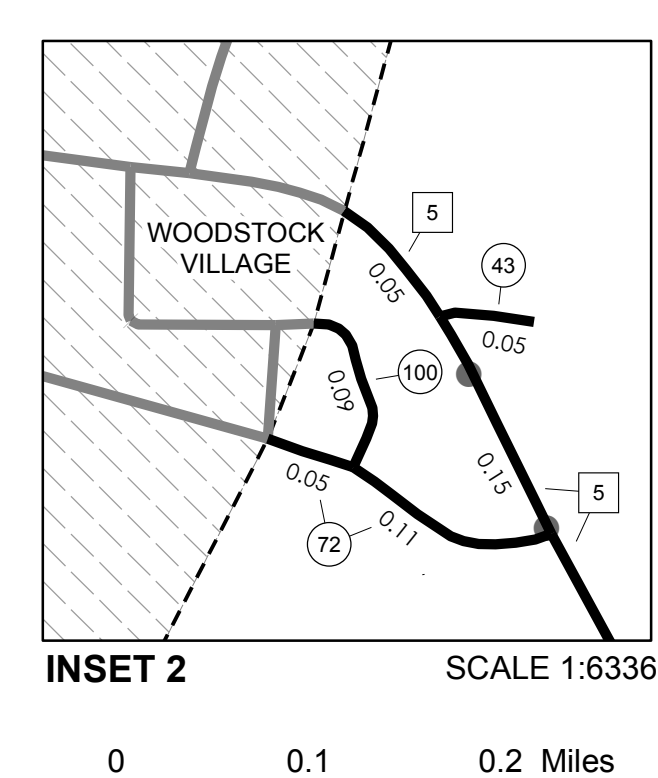
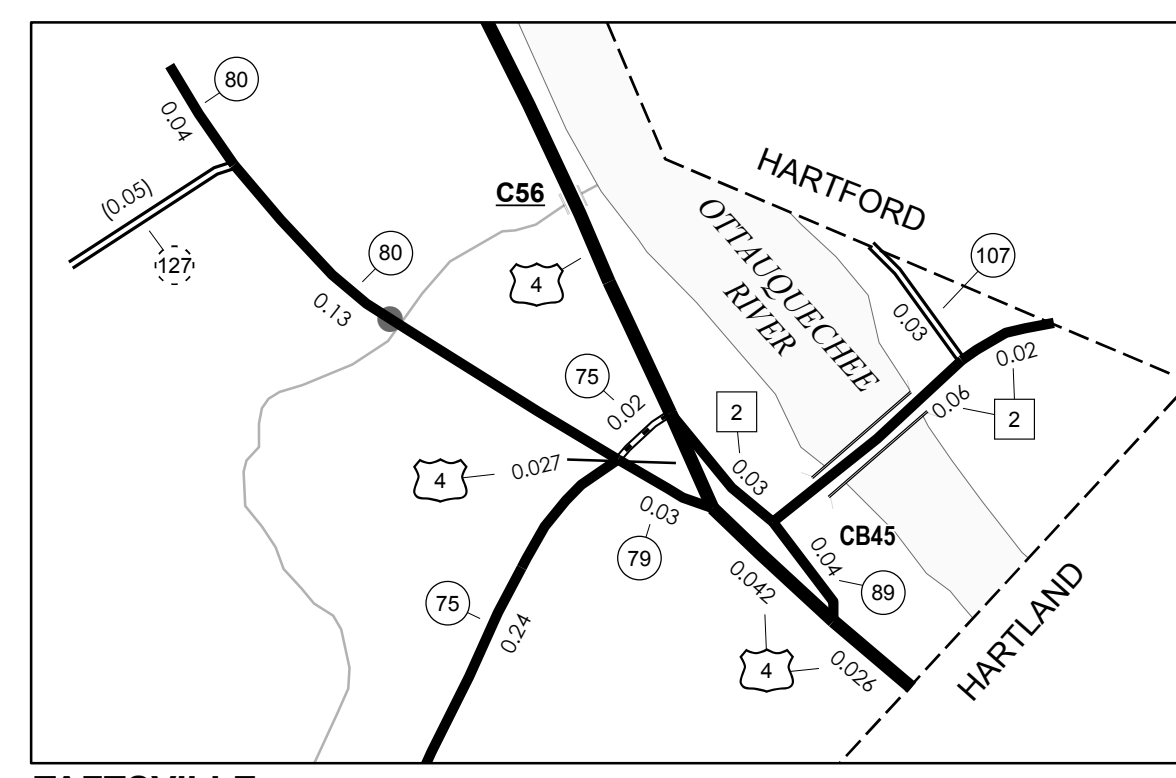
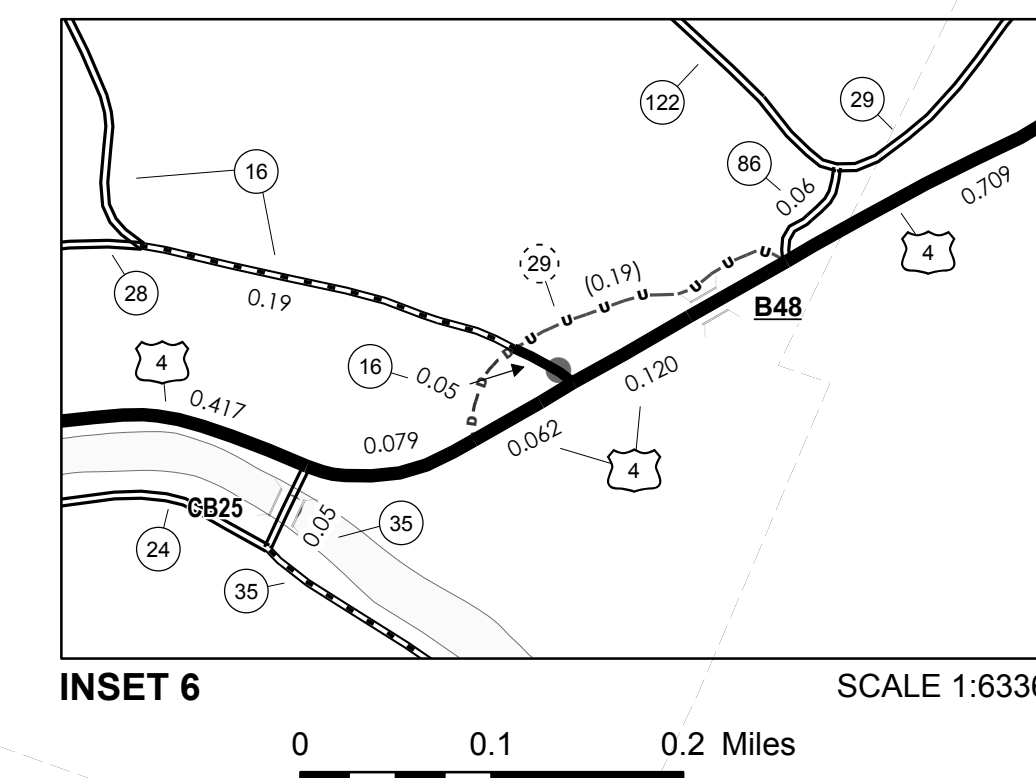


TOWN HWY. NO.	LENGTH IN MILES CLASS 3	LENGTH IN MILES CLASS 4					
7	2.51		50	0.16		92	0.17
8	0.11		51		(0.11)	93	
10	1.09	(0.09)	52	0.89		94	0.13
11	0.60		53	1.49		96	0.50
12	2.36	(1.55)	54	1.87		97	
13	0.24		55	0.20		98	0.27
16	1.56		56	0.78		99	0.28
17	0.80		57	0.20		100	0.09
19	0.21		58	0.15		102	0.24
20	0.91	(1.94)	59	1.14		103	0.12
21	0.84		60		(0.28)	104	0.14
22	0.85		61	0.69		105	0.04
23	2.92		63	0.80		106	0.33
24	1.10		64	0.95		107	0.03
26	0.10		65	0.80		108	0.09
28	0.35		66	1.25	(0.78)	109	0.17
29	0.69	(0.19)	67		(0.06)	110	0.19
30	0.98		68	0.33		111	0.34
31	0.90		69	0.12		114	0.17
32	0.52		70	0.60		115	0.08
33	0.27		71		(0.08)	116	
34	0.56	(0.74)	72	0.16		117	0.23
35	2.91		74	0.98		118	0.27
36	1.70		75	1.88		119	
37	0.92	(0.60)	77	0.61		120	(0.10)
38	0.13	(1.80)	78	0.25		121	0.13
39	0.22	(1.33)	79	0.03		122	1.10
40	0.75		80	0.17		123	(0.19)
41		(0.20)	82		(0.07)	124	0.70
42		(0.41)	83	0.04		125	(0.40)
43	0.05		84	0.23		126	(0.03)
44	0.45		85	0.20		127	(0.05)
45	1.65		86	0.06		128	(0.48)
46		(0.45)	87	0.38		129	
47	1.22		88	0.05		130	(0.18)
48	0.60		89	0.04		131	(0.16)
49	1.81		91	0.25		132	(0.12)
			TOTAL	59.60		14.15	

CLASS	LENGTH IN MILES	LEGAL TRAIL NO.	LENGTH IN MILES
CLASS 2			
TH-1	0.880		
TH-2	0.110		
TH-3	2.430		
TH-4	3.970		
TH-5	1.790		
TH-6	1.200		
TOTAL CLASS 2	10.380		
CLASS 3			
TOTAL CLASS 3	59.600		
TOTAL TOWN	69.980		
STATE HIGHWAY			
VT-12	3.298		
VT-106	6.553		
TOTAL STATE HIGHWAY	9.851		
US HIGHWAY			
US-4	8.074		
TOTAL US HIGHWAY	8.074		
TOTAL STATE	17.925		

TOTAL, TRAVELED HIGHWAYS, FEB. 10, 2010: 87.905
 (Excludes Class 4 and Legal Trail Mileage)



- HIGHWAYS**
 - INTERSTATE
 - U.S. ROUTE
 - STATE ROUTE
 - CLASS 1
 - CLASS 2
 - CLASS 3
 - CLASS 4
 - LEGAL TRAIL
 - INTERSTATE OR DIVIDED HIGHWAY
 - STATE - HARD SURFACE OR PAVED
 - TOWN - HARD SURFACE OR PAVED
 - GRAVEL
 - SOIL OR GRADED AND DRAINED EARTH
 - UNIMPROVED OR PRIMITIVE
 - IMPASSABLE OR UNTRAVELED
 - LEGAL TRAIL
 - DISCONTINUED
 - HIGHWAY CLASS CHANGE
 - RAILROAD
- PUBLIC LAND
 - POLITICAL SUBDIVISIONS
 - STATE BOUNDARY
 - COUNTY BOUNDARY
 - TOWN BOUNDARY
 - VILLAGE BOUNDARY
 - URBAN COMPACT BOUNDARY
 - WATER BODIES
 - STREAM OR BROOK
 - BRIDGE OR CULVERT
 - BRIDGE OR CULVERT GREATER THAN 20'
 - BRIDGE OR CULVERT 6' - 20'
 - TOWN SHORT STRUCTURE
 - B34 / C34 STATE BRIDGE OR CULVERT IDENTIFIER
 - B34 / C34 TOWN BRIDGE OR CULVERT IDENTIFIER
 - FEDERAL CLASSIFICATION IDENTIFIER
 - FAU URBAN ARTERIAL OR COLLECTOR
 - MA MINOR ARTERIAL
 - MJC MAJOR COLLECTOR
 - MNC MINOR COLLECTOR
 - PA PRINCIPAL ARTERIAL

STRUCTURES - SURFACE WATER NOTE:
 STRUCTURES: Town short structures (bridges or culverts from 6-feet to less than 20-feet) are drawn from the Vermont Online Bridge & Culvert Inventory Tool (VOBCIT) database.
 NOTE: Town shorts are not consistently tagged within VOBCIT.
 SURFACE WATERS: The surface waters are from the Vermont Hydrological Dataset (VHD). Only the named streams are shown.

DISCLAIMER:
 The untraveled highways (laid-out town highways), discontinued highways, and legal trails shown hereon are those of which the Agency of Transportation has record; others may exist.
 Highway and bridge data by the Agency of Transportation. All other data from the Vermont Center for Geographic Information.

Vermont State Plane Coordinate System
 North American Datum of 1983
 SPCS Zone Identifier: 4400
 Geodetic Reference System 80
 4,000-meter grid, Easting - Northing

VERMONT
GENERAL HIGHWAY MAP
Town of Woodstock

WINDSOR COUNTY
 Transportation District #4

Prepared by the
 Vermont Agency of Transportation
 Division of Planning, Outreach
 and Community Affairs
 in cooperation with
 U.S. Department of Transportation
 Federal Highway Administration

Mileage as of February 10, 2010
 Map prepared June 23, 2010

SCALE 1:31,680

