

TOWN HWY. No.	LENGTH IN MILES CLASS 3	CLASS 4
3	1.37	
4	2.60	
5	2.24	
6	5.99	
7	0.10	(0.30)
8	1.08	
9	0.28	
10		(0.60)
11	0.40	
12	2.14	
13	0.50	(0.28)
14	0.28	(0.71)
15	0.09	
16	0.66	
17	0.35	
18	2.77	
19	1.54	
21	0.90	
22	0.40	
23	0.61	
24		(0.05)
25	0.45	
26	0.67	(0.31)
27	0.03	
28	1.53	
29	0.35	
30	1.90	
31	1.30	
32	0.47	
33	0.81	
34	0.85	
35	0.25	
36	0.84	
37	1.36	
38	0.88	
39	0.07	
40	0.78	
41	0.89	(0.16)
42	0.05	
43	0.04	
44	0.08	
47	0.04	
48		(0.07)
49	0.43	
50	0.16	
51	0.50	(0.85)
52	0.38	
53	0.90	
54	0.21	
56	0.43	(0.89)
57		
58	0.35	
59	0.65	
TOTAL	41.95	4.22

MILEAGE SUMMARY

CLASS 2	4.700		
TH-1	1.231		
TH-2			
TOTAL CLASS 2	5.931		
CLASS 3			
TOTAL CLASS 3	41.95		
TOTAL TOWN	47.881		
STATE HIGHWAY			
VT-44	5.044		
TOTAL STATE HIGHWAY	5.044		
TOTAL STATE	5.044		

TOTAL, TRAVELED HIGHWAYS, FEB. 10, 2024: 52.925
(Excludes Class 4 and Legal Trail Mileage)

TOWN HWY. No.	LENGTH IN MILES "NOT UP TO STANDARD"
26	(0.01)
39	(0.11)
TOTAL	0.12

*The sections of the town highways listed above are legally Class 3, but have been deemed "Not Up To Standard" and are functionally Class 4 Town Highways

LEGAL TRAIL No.	LENGTH IN MILES LEGAL TRAIL
2	(0.38)
TOTAL	0.38

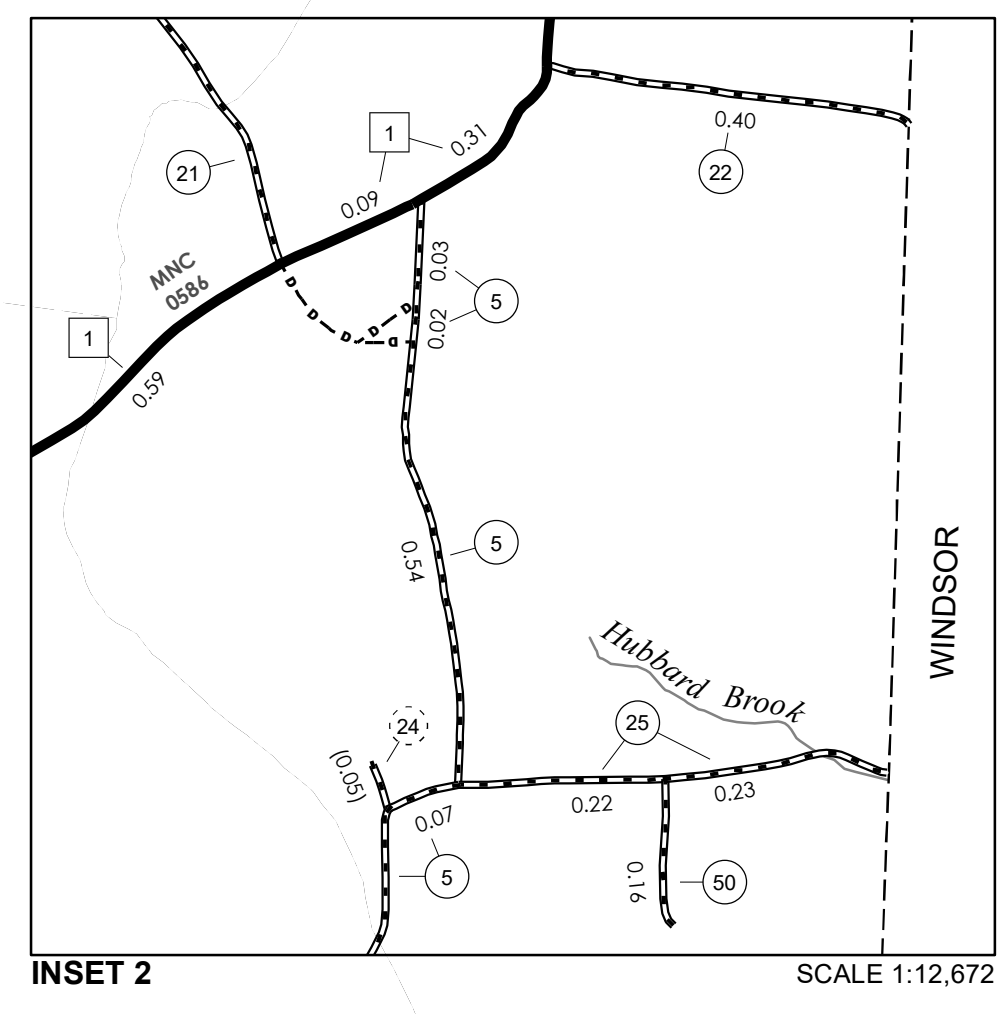
- HIGHWAYS**
- INTERSTATE
 - U.S. ROUTE
 - STATE ROUTE
 - CLASS 1
 - CLASS 2
 - CLASS 3
 - CLASS 4
 - LEGAL TRAIL
 - PARK AND RIDE
- INTERSTATE OR DIVIDED HIGHWAY
STATE - HARD SURFACE OR PAVED
TOWN - HARD SURFACE OR PAVED
GRAVEL
SOIL OR GRADED AND DRAINED EARTH
UNIMPROVED OR PRIMITIVE
IMPASSABLE OR UNTRAVELED
LEGAL TRAIL
DISCONTINUED
HIGHWAY CLASS CHANGE
RAILROAD
INACTIVE RAILROAD
PUBLIC LAND - NATIONAL FOREST
PUBLIC LAND - STATE/MUNICIPAL
NFR NATIONAL FOREST ROAD
ACE ARMY CORPS OF ENGINEERS
USGH UNITED STATES GOV. HWY.

- POLITICAL SUBDIVISIONS**
- STATE BOUNDARY
 - COUNTY BOUNDARY
 - TOWN BOUNDARY
 - VILLAGE BOUNDARY
 - URBAN COMPACT BOUNDARY
 - WATER BODY
 - STREAM OR BROOK
- BRIDGE OR CULVERT**
- BRIDGE OR CULVERT > 20'
 - BRIDGE OR CULVERT 6' - 20'
 - BIKE PATH STRUCTURE
 - VT CULVERTS BRIDGE
 - VT CULVERTS CULVERT > 6'
 - STATE BRIDGE OR CULVERT IDENTIFIER (B34 / C34)
 - TOWN BRIDGE OR CULVERT IDENTIFIER (B34 / C34)
- FEDERAL CLASSIFICATION IDENTIFIER**
- MA MINOR ARTERIAL
 - MJC MAJOR COLLECTOR
 - MNC MINOR COLLECTOR
 - PA PRINCIPAL ARTERIAL

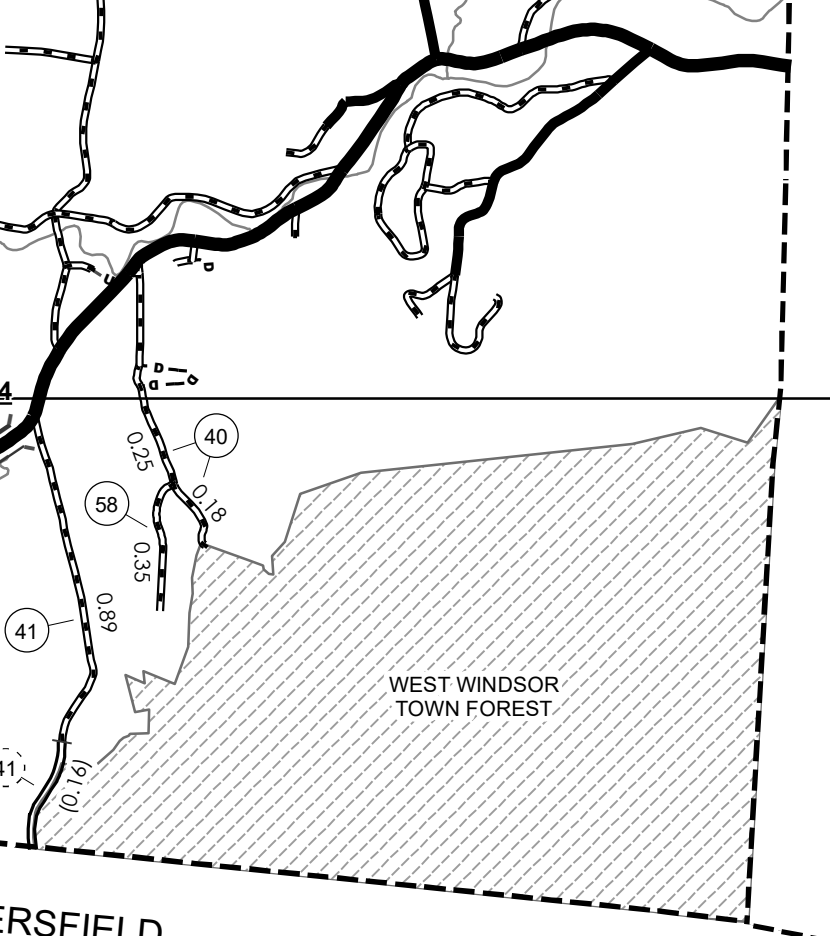
DISCLAIMER:
The untraveled highways (laid-out town highways), discontinued highways, and legal trails hereon are those of which the Agency of Transportation has record; others may exist.

Highway and bridge data by the Agency of Transportation. Town short structures drawn from the VT CULVERTS (formerly VOBICIT) online database. All other data from the Vermont Open Geodata Portal. Only named streams shown.

Vermont State Plane Coordinate System
North American Datum of 1983
SPCS_Zone_Identifier: 4400
Geodetic Reference System 80
4,000-meter grid, Easting - Northing



0 0.15 0.3 Miles



0 0.15 0.3 Miles

VERMONT GENERAL HIGHWAY MAP
Town of West Windsor
WINDSOR COUNTY
Transportation District #4

Prepared by the
Vermont Agency of Transportation
Division of Policy, Planning and Intermodal Development
in cooperation with
U.S. Department of Transportation
Federal Highway Administration

