

TOWN HWY. NO.	LENGTH IN MILES CLASS 3	LENGTH IN MILES CLASS 4	LEGAL TRAIL NO.	LENGTH IN MILES
6	3.750		1	(1.300)
7	4.860	(0.290)	2	(0.850)
8	0.100	(0.400)	3	(0.270)
9	0.040		4	(0.360)
10		(1.100)		
11	1.530			
13	0.270			
14	0.500			
15	0.710	(0.190)		
16	1.600	(0.100)		
18		(0.500)		
20	0.910			
21	0.150			
22	0.100			
23	0.670			
24	2.640	(1.950)		
25	0.700			
26		(0.600)		
27	0.600			
28	0.080	(0.900)		
29		(0.500)		
30	1.320			
31	2.980			
32	0.600			
33	2.040			
34	0.820			
35	0.100	(0.300)		
36	0.680			
37	0.450			
38		(0.600)		
39	0.190			
40	0.040			
41	0.100			
42	0.100			
43	0.070			
44	0.490	(0.340)		
45	2.160			
46	1.580			
47	0.100			
48	0.120			
49	0.100			
50	0.230			
51	0.290			
52	0.500			
53	0.100			
54	0.680			
55	0.200			
56	0.100			
TOTAL	35.410	7.770		

* This portion of town highway is Class 3, but is functionally Class 4

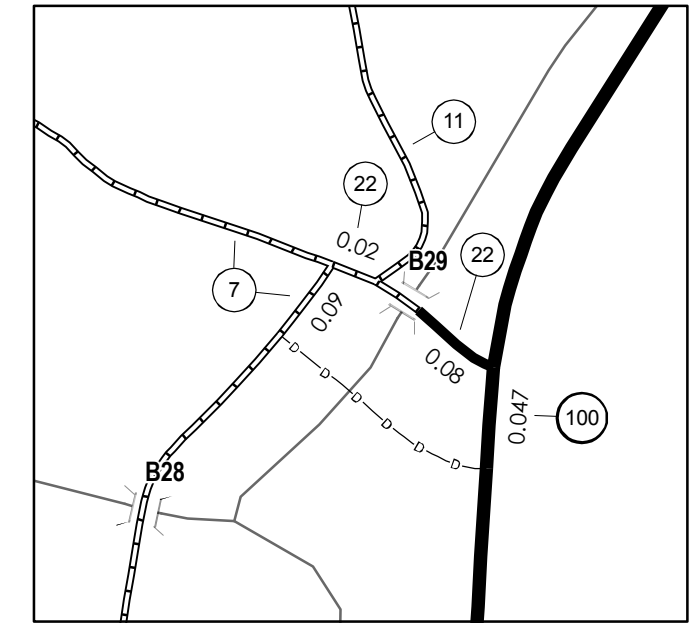
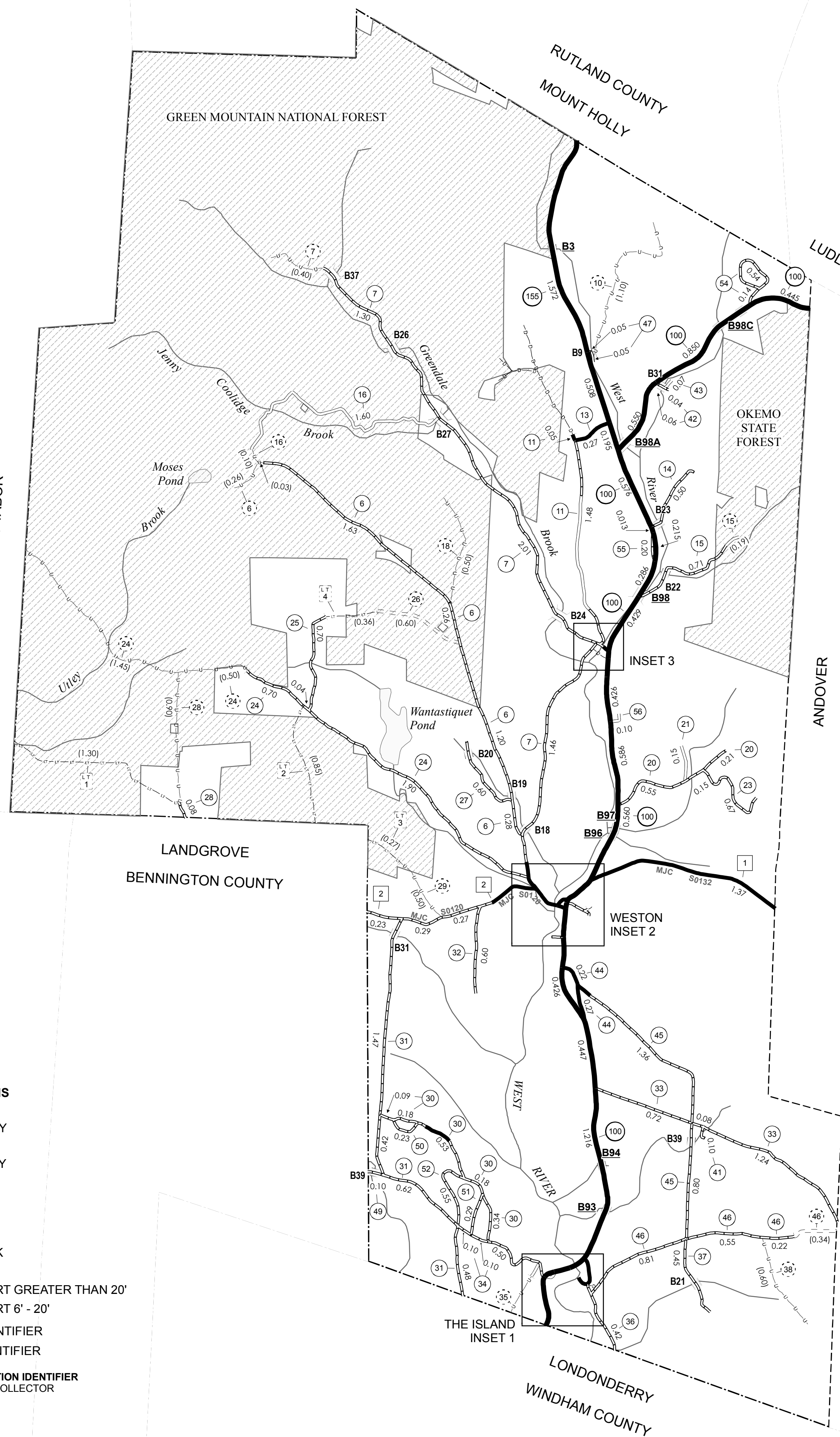
MILEAGE SUMMARY			
CLASS 2			
TH-1	1.370		
TH-2	1.480		
		TOTAL CLASS 2	2.850
CLASS 3			
		TOTAL CLASS 3	35.410
		TOTAL TOWN	38.260
STATE HIGHWAY			
VT-100	8.399		
VT-155	2.275		
		TOTAL STATE HIGHWAY	10.674
		TOTAL STATE	10.674

TOTAL, TRAVELED HIGHWAYS, FEB. 10, 2007: 48.934
(Excludes Class 4 and Legal Trail Mileage)

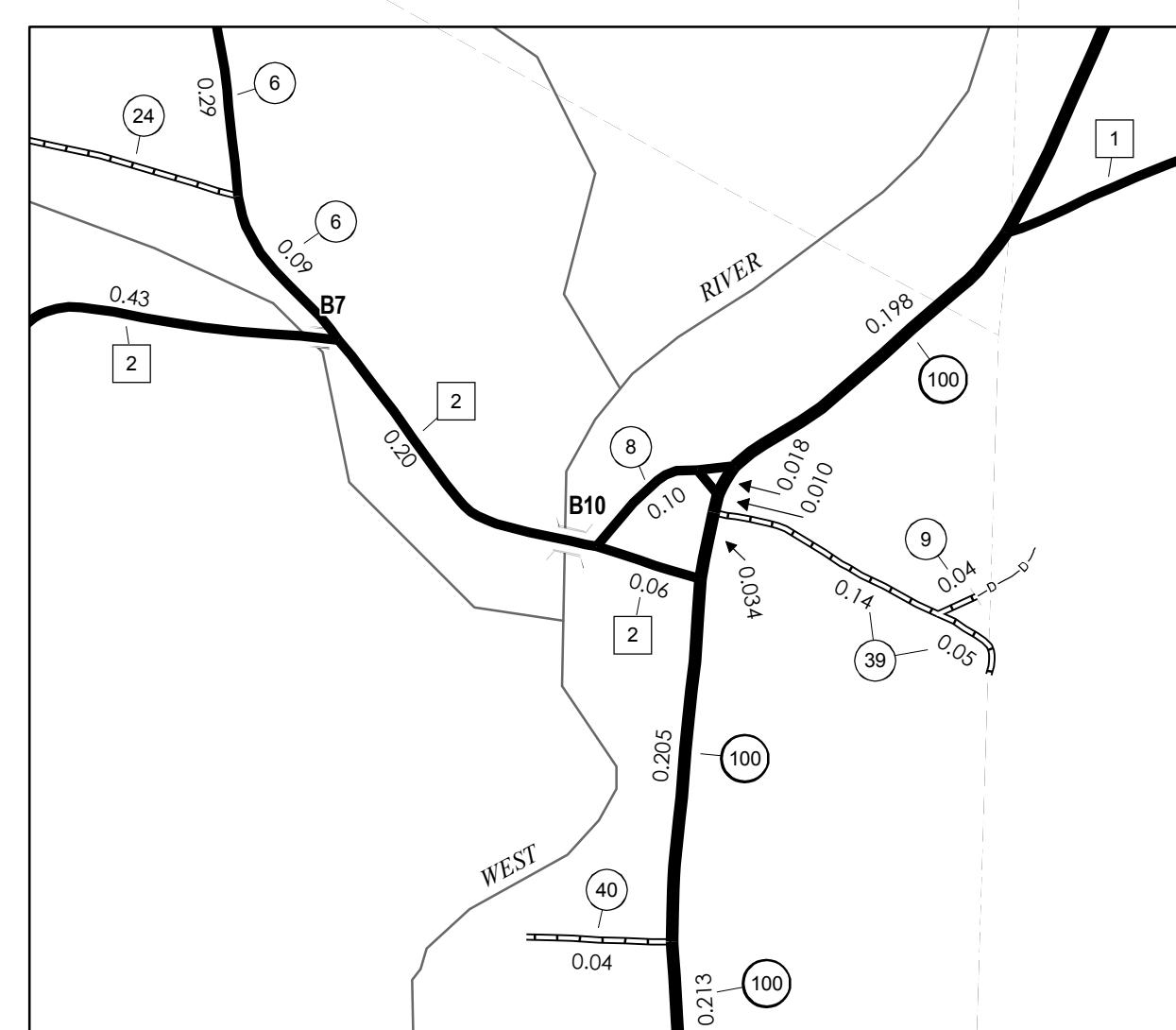
- HIGHWAYS**
- INTERSTATE
- U.S. ROUTE
- STATE ROUTE
- CLASS 1
- CLASS 2
- CLASS 3
- CLASS 4
- LEGAL TRAIL
- INTERSTATE OR DIVIDED HIGHWAY
- STATE - HARD SURFACE OR PAVED
- TOWN - HARD SURFACE OR PAVED
- GRAVEL
- SOIL OR GRADED AND DRAINED EARTH
- UNIMPROVED OR PRIMITIVE
- IMPASSABLE OR UNTRAVELED
- LEGAL TRAIL
- DISCONTINUED
- HIGHWAY CLASS CHANGE
- RAILROAD
- PUBLIC LAND
- POLITICAL SUBDIVISIONS
- STATE BOUNDARY
- COUNTY BOUNDARY
- TOWN BOUNDARY
- VILLAGE BOUNDARY
- URBAN COMPACT
- WATER BODIES
- OPEN WATER
- SWAMP
- STREAM OR BROOK
- BRIDGE OR CULVERT
- BRIDGE OR CULVERT GREATER THAN 20'
- BRIDGE OR CULVERT 6' - 20'
- B34 STATE BRIDGE IDENTIFIER
- B34 TOWN BRIDGE IDENTIFIER
- FEDERAL CLASSIFICATION IDENTIFIER
- FAU URBAN ARTERIAL OR COLLECTOR
- MA MINOR ARTERIAL
- MLJC MAJOR COLLECTOR
- MNC MINOR COLLECTOR
- PA PRINCIPAL ARTERIAL

DISCLAIMER:
The untraveled highways (laid-out town highways), discontinued highways, and legal trails shown hereon are those of which the Agency of Transportation has record; others may exist.
Highway and bridge data by the Agency of Transportation, Policy & Planning Division. All other data from the Vermont Center for Geographic Information.

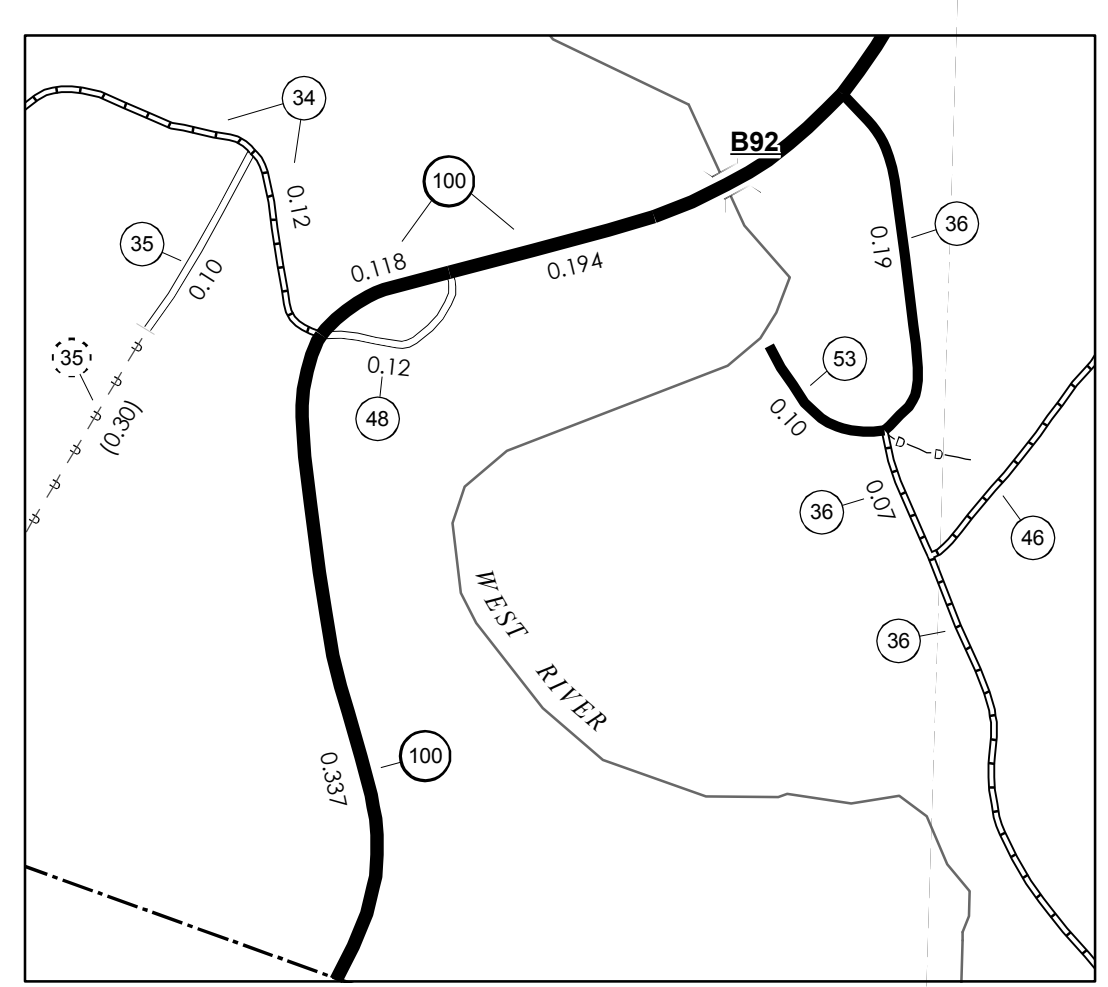
Vermont State Plane Coordinate System
North American Datum of 1983
SPCS Zone Identifier: 4400
Geodetic Reference System 80
4,000-meter grid, Easting - Northing



INSET 3 SCALE 1:6336

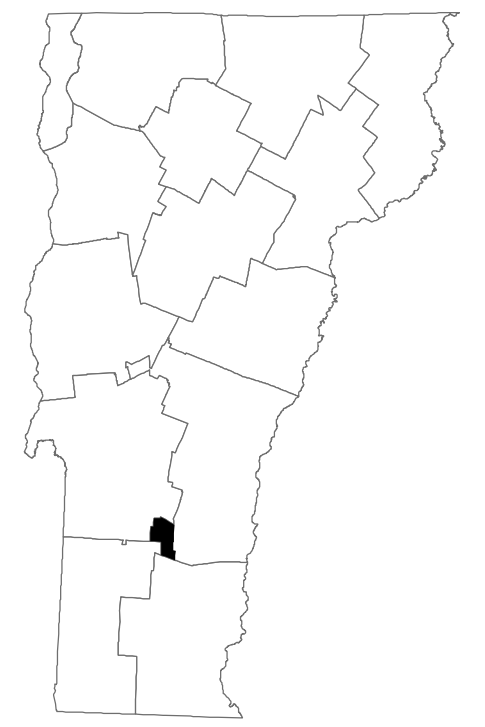
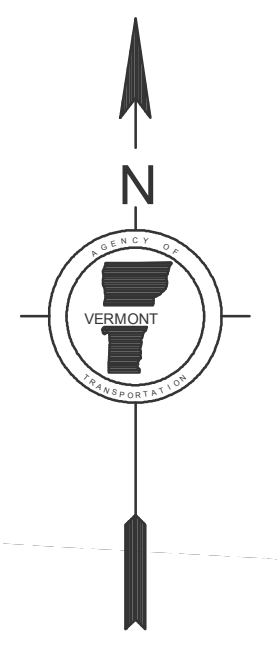
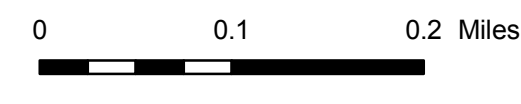


WESTON INSET 2 SCALE 1:6336



THE ISLAND INSET 1 SCALE 1:6336

SCALE FOR INSETS 1:6336 (UNLESS OTHERWISE NOTED)



VERMONT
GENERAL HIGHWAY MAP
Town of Weston
WINDSOR COUNTY

Transportation District #2

Prepared by the
Vermont Agency of Transportation
Policy & Planning Division
in cooperation with
U.S. Department of Transportation
Federal Highway Administration

Mileage as of: Feb. 10, 2007
Map generated: October, 2007

