

TOWN HWY. No.	LENGTH IN MILES "NOT UP TO STANDARD"
7	(0.05)
25	(0.24)
29	(0.30)
38	(0.06)
TOTAL	0.65

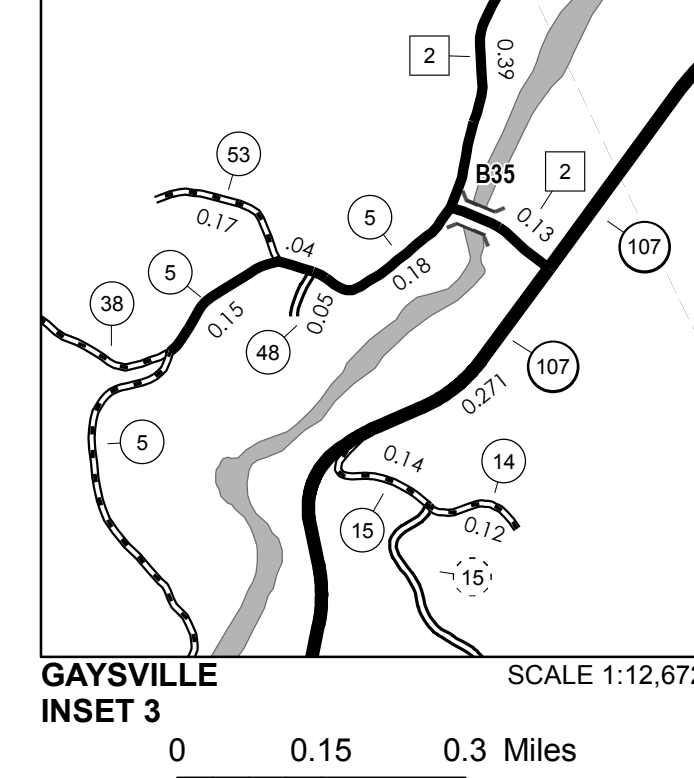
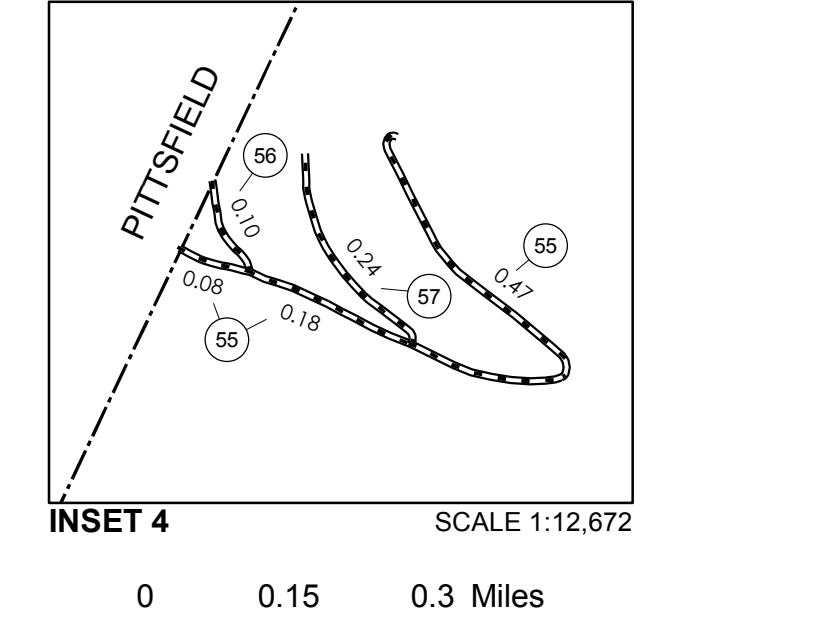
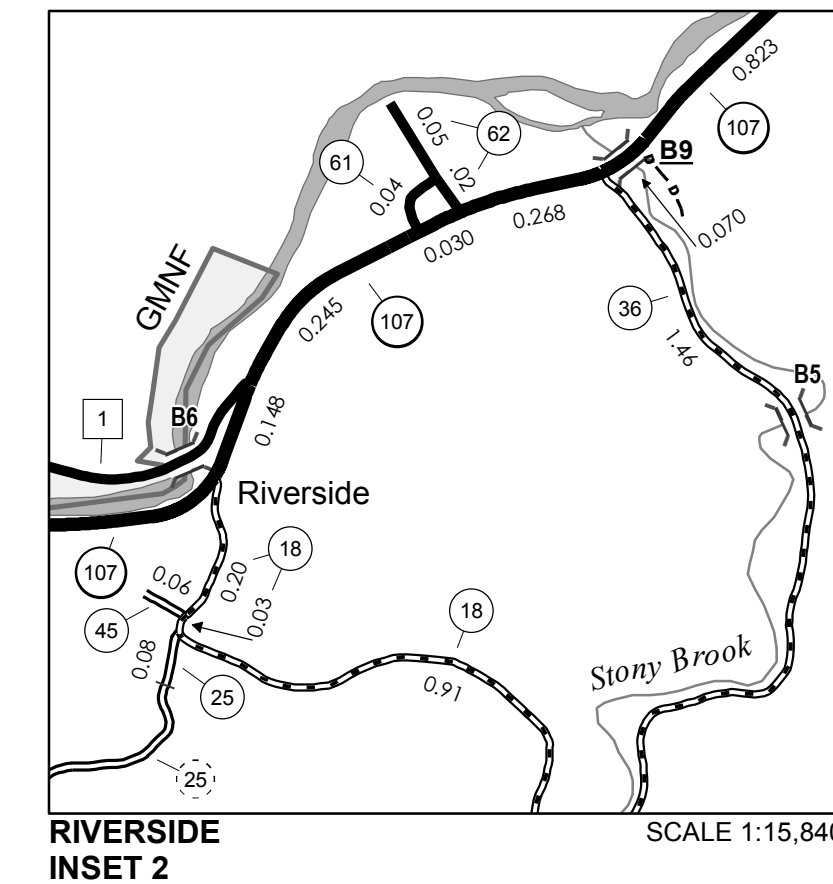
* The sections of the town highways listed above are legally Class 3, but have been deemed "Not Up To Standard" and are functionally Class 4 Town Highways

TOWN HWY. No.	CLASS 3	CLASS 4	TOWN HWY. No.	CLASS 3	CLASS 4
3	0.72		34		(1.97)
4	2.69		35	0.92	(0.59)
5	1.03		36	5.58	(0.80)
7		(0.60)	37		(0.62)
8	0.20		38	1.46	(0.52)
9		(0.59)	39		0.88
10	2.32		40		(0.20)
11	1.59	(1.50)	41	0.04	
12	0.60		42		(0.60)
13	0.70		43		(0.33)
14	0.12		44		(0.07)
15	0.14	(1.95)	45	0.06	
16		(0.30)	48	0.05	
17		(1.70)	49	0.36	
18	1.14		51	0.32	
19	3.09	(0.37)	52	0.50	
20	0.60		53	0.17	
21		(1.28)	54	0.20	
22		(0.90)	55	0.73	
23		(0.40)	56	0.10	
24		(0.10)	57	0.24	
25	2.44	(0.91)	58	0.54	
26		(2.25)	59	0.11	
27	0.24		60	0.07	
28	0.21		61	0.04	
29	1.55		62	0.07	
30		(0.35)	63	0.08	
31	0.18	(0.30)	64		(0.85)
32	0.59	(3.16)	65		(1.23)
33	0.73	(0.51)	TOTAL	33.40	24.95

MILEAGE SUMMARY

CLASS 2		
TH-1	2,620	
TH-2	2,500	
TOTAL CLASS 2		5,120
CLASS 3		
TOTAL CLASS 3		33,40
TOTAL TOWN		38,520
STATE HIGHWAY		
VT-100	5,113	
VT-107	6,679	
TOTAL STATE HIGHWAY		11,792
TOTAL STATE		11,792
TOTAL, TRAVELED HIGHWAYS, FEB. 10, 2016:		50,312

(Excludes Class 4 and Legal Trail Mileage)

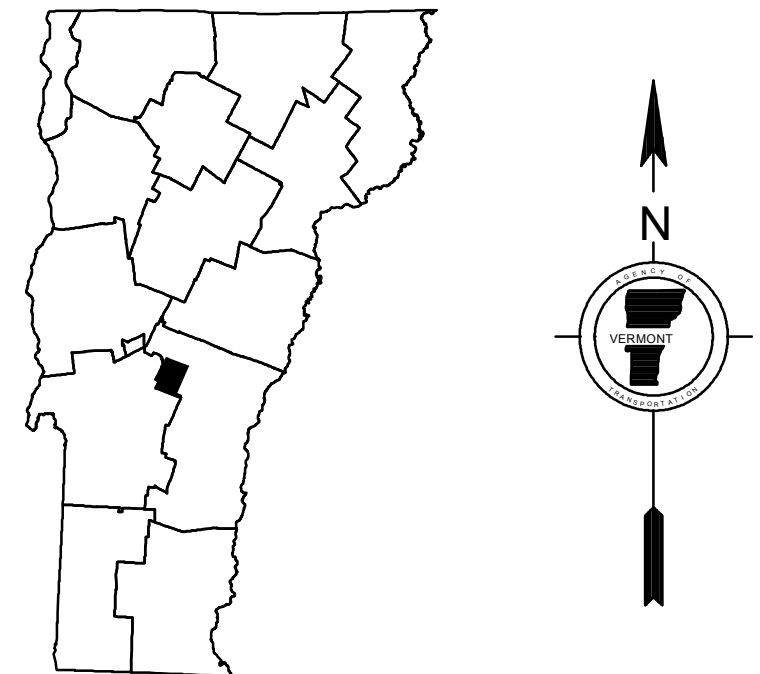


- HIGHWAYS**
- INTERSTATE
 - U.S. ROUTE
 - STATE ROUTE
 - CLASS 1
 - CLASS 2
 - CLASS 3
 - CLASS 4
 - LEGAL TRAIL
- INTERSTATE OR DIVIDED HIGHWAY
STATE - HARD SURFACE OR PAVED
TOWN - HARD SURFACE OR PAVED
GRAVEL
SOIL OR GRADED AND DRAINED EARTH
UNIMPROVED OR PRIMITIVE
IMPASSABLE OR UNTRAVELED
LEGAL TRAIL
DISCONTINUED
HIGHWAY CLASS CHANGE
RAILROAD
INACTIVE RAILROAD
NFR NATIONAL FOREST ROAD
SFH STATE FOREST HIGHWAY
P PARK AND RIDE
- PUBLIC LAND - GREEN MOUNTAIN NATIONAL FOREST**
- PUBLIC LAND - STATE/MUNICIPAL**
- POLITICAL SUBDIVISIONS**
- STATE BOUNDARY
 - COUNTY BOUNDARY
 - TOWN BOUNDARY
 - VILLAGE BOUNDARY
 - URBAN COMPACT BOUNDARY
 - WATER BODY
 - STREAM OR BROOK
- BRIDGE OR CULVERT**
- BRIDGE OR CULVERT > 20'
 - BRIDGE OR CULVERT 6' - 20'
 - VOBCIT BRIDGE
 - VOBCIT CULVERT > 6'
 - STATE BRIDGE OR CULVERT IDENTIFIER
 - TOWN BRIDGE OR CULVERT IDENTIFIER
- FEDERAL CLASSIFICATION IDENTIFIER**
- FAU URBAN ARTERIAL OR COLLECTOR
 - MA MINOR ARTERIAL
 - MJC MAJOR COLLECTOR
 - MNC MINOR COLLECTOR
 - PA PRINCIPAL ARTERIAL

DISCLAIMER:
The untraveled highways (laid-out town highways), discontinued highways, and legal trails herein are those of which the Agency of Transportation has record; others may exist.

Highway and bridge data by the Agency of Transportation. Town short structures are drawn from the Vermont Online Bridge & Culvert Inventory Tool (VOBCIT) database. All other data from the Vermont Center for Geographic Information. Only named streams are shown.

Vermont State Plane Coordinate System
North American Datum of 1983
SPCS_Zone_Identifier: 4400
Geodetic Reference System 80
4,000-meter grid, Easting - Northing



VERMONT
GENERAL HIGHWAY MAP
Town of Stockbridge

WINDSOR COUNTY
Transportation District #4

Prepared by the
Vermont Agency of Transportation
Division of Policy, Planning and Intermodal Development
in cooperation with
U.S. Department of Transportation
Federal Highway Administration

