

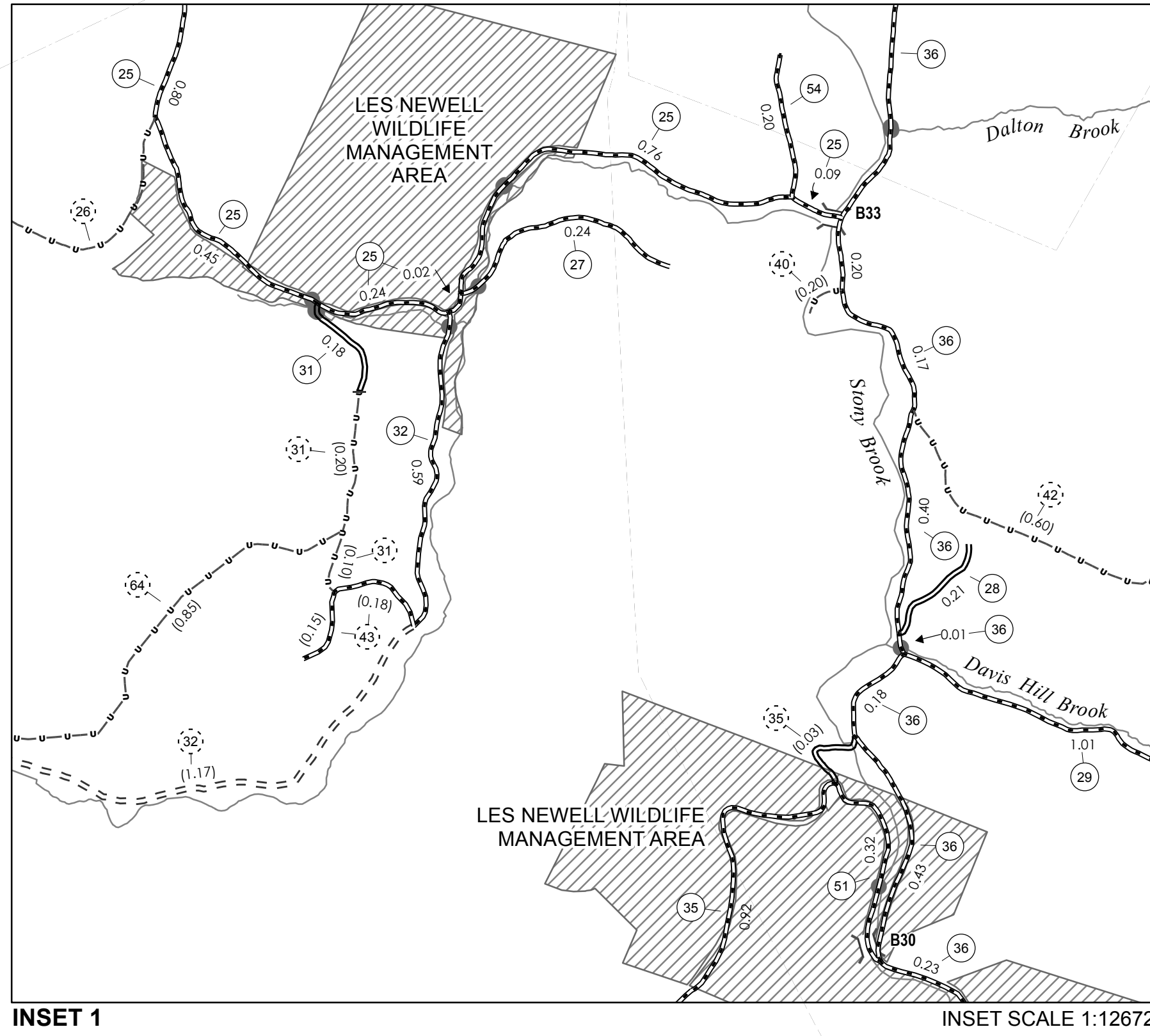
**MILEAGE SUMMARY**

CLASS 2			
TH-1	2.620		
TH-2	2.500		
	TOTAL CLASS 2	5.120	
CLASS 3			
	TOTAL CLASS 3	33.400	
	<b>TOTAL TOWN</b>	<b>38.520</b>	
STATE HIGHWAY			
VT-100	5.093		
VT-107	6.700		
	TOTAL STATE HIGHWAY	11.793	
	<b>TOTAL STATE</b>	<b>11.793</b>	

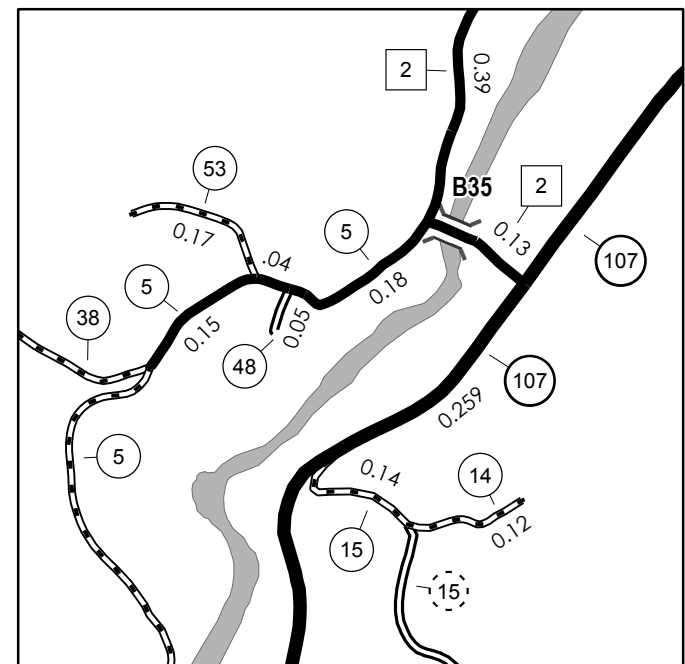
**TOTAL, TRAVELED HIGHWAYS, FEB. 10, 2011: 50.313**  
 (Excludes Class 4, Legal Trail, and Unidentified Corridor Mileage)

TOWN HWY. NO.	CLASS 3	CLASS 4			
3	0.72		33	0.73	(0.51)
4	2.69		34		(1.97)
5	1.03		35	0.92	(0.59)
7		(0.60)	36	5.58	(0.80)
7		(0.05)	37		(0.62)
8	0.20		38	1.46	(0.52)
9		(1.10)	38		(0.06)
10	2.32		39	0.88	
11	1.59	(1.50)	40		(0.20)
12	0.60		41		0.04
13	0.70		42		(0.60)
14	0.12		43		(0.33)
15	0.14	(1.95)	44		(0.07)
16		(0.30)	45		0.06
17		(1.70)	48		0.05
18	1.14		49	0.36	
19	3.09	(0.37)	51	0.32	
20	0.60		52	0.50	
21		(1.28)	53	0.17	
22		(0.90)	54	0.20	
23		(0.40)	55	0.73	
24		(0.10)	56	0.10	
25	2.44	(0.91)	57	0.24	
25		(0.24)	58	0.54	
26		(2.25)	59	0.11	
27	0.24		60	0.07	
28	0.21		61	0.04	
29	1.55		62	0.07	
29		(0.30)	63	0.08	
30		(0.35)	64		(0.85)
31	0.18	(0.30)	65		(1.23)
32	0.59	(3.16)	<b>TOTAL</b>	<b>33.40</b>	<b>26.11</b>

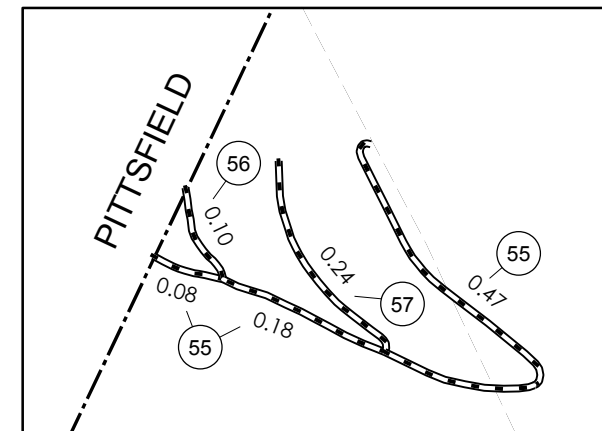
\* This portion of town highway is Class 3, but is functionally Class 4



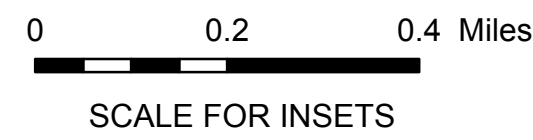
INSET 1 INSET SCALE 1:12672



GAYVILLE INSET 2 INSET SCALE 1:12672



PITTSFIELD INSET 3 INSET SCALE 1:12672



- HIGHWAYS**
- INTERSTATE
  - U.S. ROUTE
  - STATE ROUTE
  - CLASS 1
  - CLASS 2
  - CLASS 3
  - CLASS 4
  - LEGAL TRAIL
  - INTERSTATE OR DIVIDED HIGHWAY
  - STATE - HARD SURFACE OR PAVED
  - TOWN - HARD SURFACE OR PAVED
  - GRAVEL
  - SOIL OR GRADED AND DRAINED EARTH
  - UNIMPROVED OR PRIMITIVE
  - IMPASSABLE OR UNTRAVELED
  - LEGAL TRAIL
  - DISCONTINUED
  - HIGHWAY CLASS CHANGE
  - RAILROAD
  - INACTIVE RAILROAD
- PUBLIC LAND**
- POLITICAL SUBDIVISIONS
  - STATE BOUNDARY
  - COUNTY BOUNDARY
  - TOWN BOUNDARY
  - VILLAGE BOUNDARY
  - URBAN COMPACT BOUNDARY
  - WATER BODY
  - STREAM OR BROOK
- BRIDGE OR CULVERT**
- BRIDGE OR CULVERT GREATER THAN 20'
  - BRIDGE OR CULVERT 6' - 20'
  - TOWN SHORT STRUCTURE
- B34 / C34 STATE BRIDGE OR CULVERT IDENTIFIER**
- B34 / C34 TOWN BRIDGE OR CULVERT IDENTIFIER**
- FEDERAL CLASSIFICATION IDENTIFIER**
- FAU URBAN ARTERIAL OR COLLECTOR
  - MA MINOR ARTERIAL
  - MJC MAJOR COLLECTOR
  - MNC MINOR COLLECTOR
  - PA PRINCIPAL ARTERIAL

**STRUCTURES - SURFACE WATER NOTE:**

STRUCTURES: Town short structures (bridges or culverts from 6-feet to less than 20-feet) are drawn from the Vermont Online Bridge & Culvert Inventory Tool (VOBCIT) database. NOTE: Town shorts are not consistently tagged within VOBCIT.

SURFACE WATERS: The surface waters are from the Vermont Hydrological Dataset (VHD). Only the named streams are shown.

**DISCLAIMER:**

The untraveled highways (laid-out town highways), discontinued highways, and legal trails shown hereon are those of which the Agency of Transportation has record; others may exist.

Highway and bridge data by the Agency of Transportation. All other data from the Vermont Center for Geographic Information.

Vermont State Plane Coordinate System  
 North American Datum of 1983  
 SPCS Zone Identifier: 4400  
 Geodetic Reference System 80  
 4,000-meter grid, Easting - Northing

**VERMONT**  
**GENERAL HIGHWAY MAP**  
**Town of Stockbridge**

WINDSOR COUNTY  
 Transportation District #4  
 Prepared by the  
 Vermont Agency of Transportation  
 Division of Policy, Planning & Intermodal Development  
 in cooperation with  
 U.S. Department of Transportation  
 Federal Highway Administration

