

TOWN HWY. No.	LENGTH IN MILES CLASS 3	LENGTH IN MILES CLASS 4	TOWN HWY. No.	LENGTH IN MILES CLASS 3	LENGTH IN MILES CLASS 4	TOWN HWY. No.	LENGTH IN MILES CLASS 3	LENGTH IN MILES CLASS 4
5	3.81		41	0.71		74	0.07	
7	2.96		42	1.05		75	0.20	
8	0.40		43	0.41	(0.49)	76	0.17	
9	1.32		44	0.18		77		(0.07)
10	0.46		45	0.80		78	0.21	
11	1.29		46	0.65	(1.30)	80	0.11	
12	2.33		47	2.33		81	0.16	
13	3.22		48	1.19		82	0.36	
14	1.28		49	2.40		83	0.12	
15	0.38	(1.31)	50	0.10		84	0.08	
16	0.66	(0.60)	51	0.42		85	0.32	
17	2.38		53	0.20	(0.59)	86	0.21	
18	0.80		54	0.31		87	0.23	
20	0.50		55	0.28		88	0.11	
21		(0.70)	56	0.60		89	0.25	
22	1.94		57	0.04		92	0.04	
23	1.45		58	0.03		93	0.07	
24	0.14		59	0.11		94	0.05	
25	0.83		60	0.06		95	0.26	
26	0.10		61	0.07		96	0.10	
27	0.15		62	0.41		97	0.11	
28	0.15		63	0.09		98	0.20	
29	0.51		64	0.05		99	0.13	
30	0.30		65	0.10		100	0.18	
32	0.44		66	0.12		101	0.16	
33	0.15		67	0.51	(0.44)	102		(0.06)
34	0.24		68	0.21	(0.59)	103		(1.21)
35	3.03		69	0.08	(0.14)	104		
36	2.36		70	0.05		105		
37	0.68	(1.31)	71	0.04		106		
38	3.57		72	0.06		TOTAL	55.59	9.51
39		(0.70)	73	0.10				

MILEAGE SUMMARY

CLASS 2		
TH-1	2,590	
TH-2	2,540	
TH-3	1,840	
TH-4	2,220	
TH-5	2,050	
TH-6	4,130	
TH-7	0,040	
TOTAL CLASS 2	15,410	
CLASS 3		
TOTAL CLASS 3	55.59	
TOTAL TOWN	71.000	
STATE HIGHWAY		
VT-14	9,121	
VT-107	2,530	
VT-110	2,320	
TOTAL STATE HIGHWAY	13,971	
INTERSTATE		
I-89	7,720	
TOTAL INTERSTATE	7,720	
INTERSTATE - Ramps		
I-89	1,266	
TOTAL INTERSTATE - Ramps	1,266	
TOTAL INTERSTATE	8,986	

TOTAL, TRAVELED HIGHWAYS, FEB. 10, 2013: 93,957
(Excludes Class 4, Legal Trail, and Unidentified Corridor Mileage)

TOWN HWY. No.	LENGTH IN MILES "NOT UP TO STANDARD"
37	(0.07)
46	(0.18)
TOTAL	0.25

* The sections of the town highways listed above are legally Class 3, but have been deemed "Not Up To Standard" and are functionally Class 4 Town Highways

- HIGHWAYS**
- INTERSTATE OR DIVIDED HIGHWAY
 - STATE - HARD SURFACE OR PAVED
 - TOWN - HARD SURFACE OR PAVED
 - GRAVEL
 - SOIL OR GRADED AND DRAINED EARTH
 - UNIMPROVED OR PRIMITIVE
 - IMPASSABLE OR UNTRAVELED
 - LEGAL TRAIL
 - DISCONTINUED
 - HIGHWAY CLASS CHANGE
 - RAILROAD
 - INACTIVE RAILROAD
 - NFR NATIONAL FOREST ROAD
 - SFH STATE FOREST HIGHWAY
 - P PARK AND RIDE

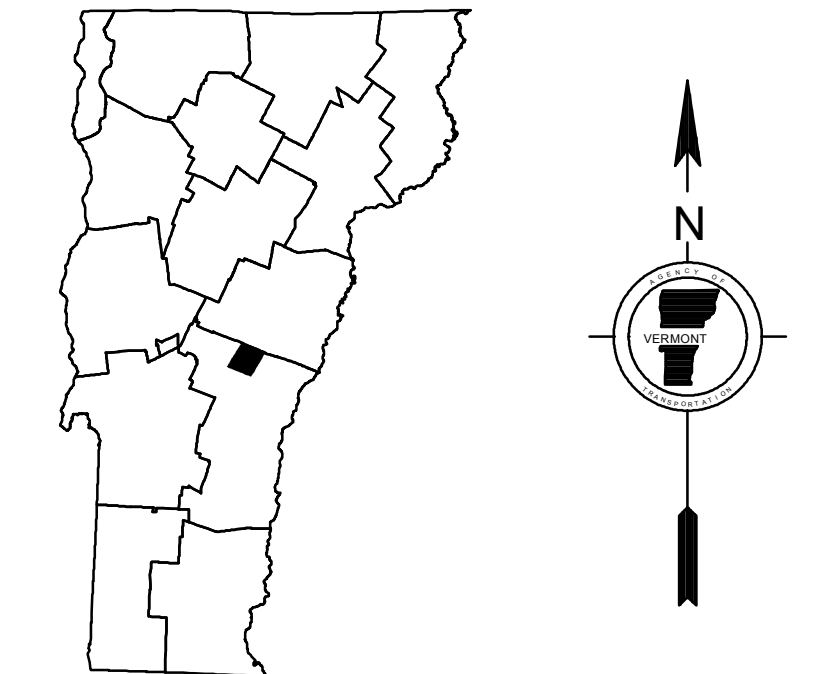
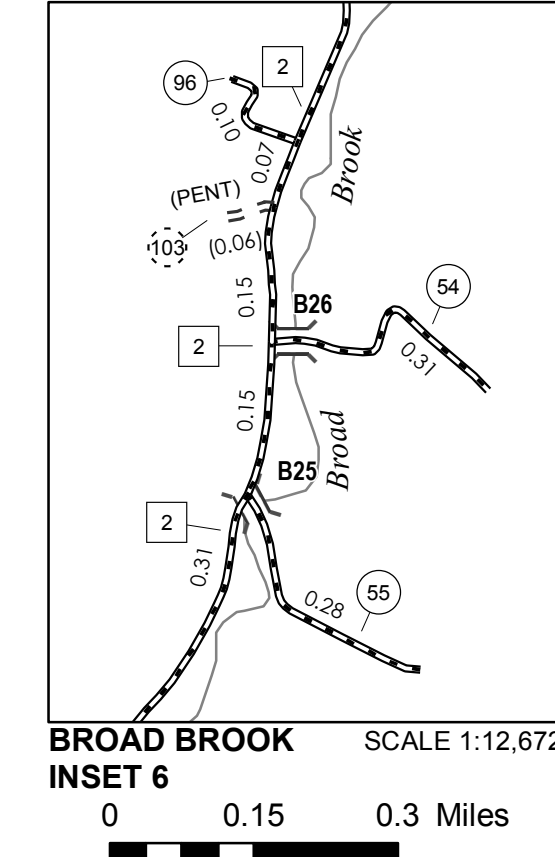
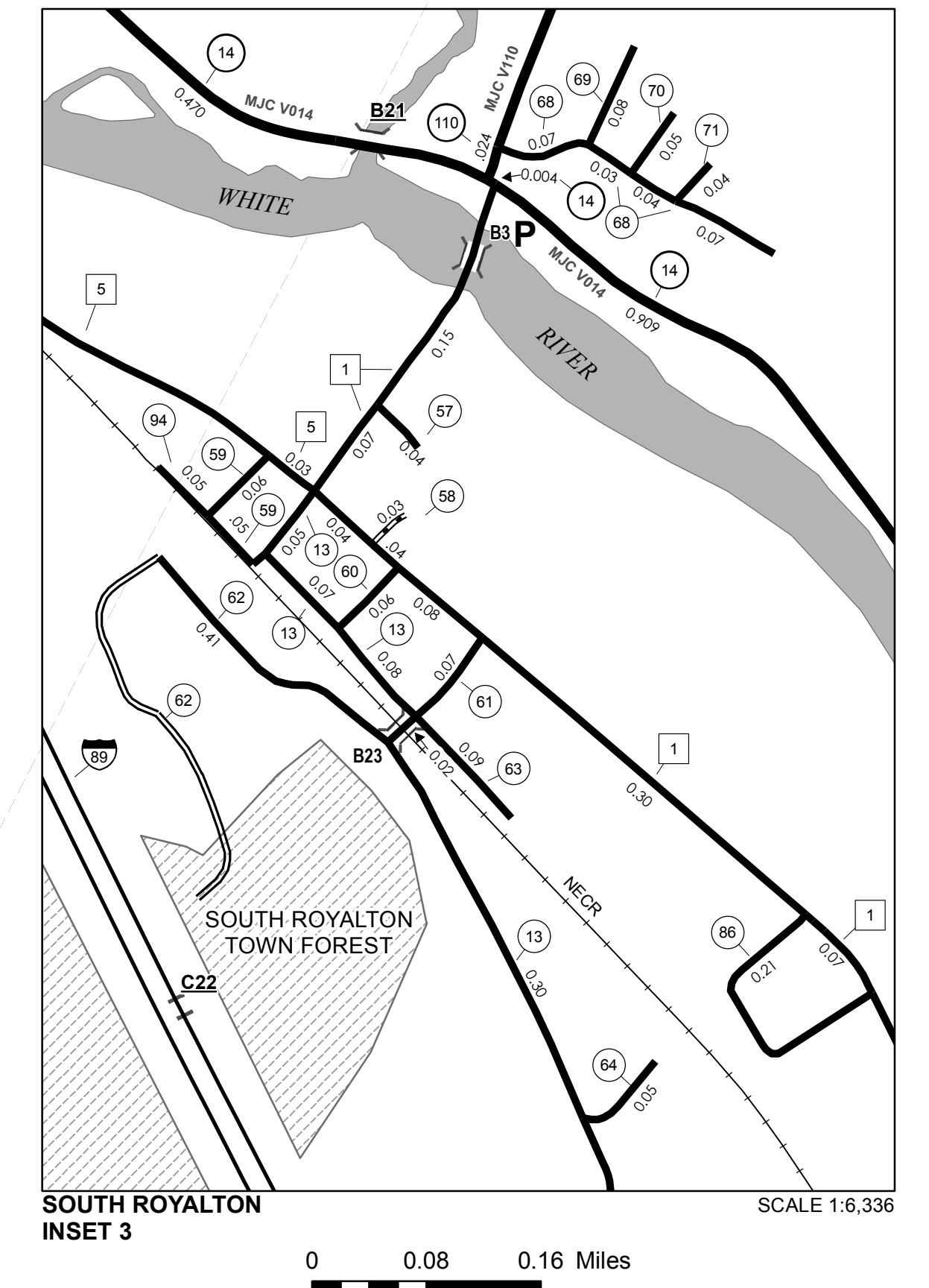
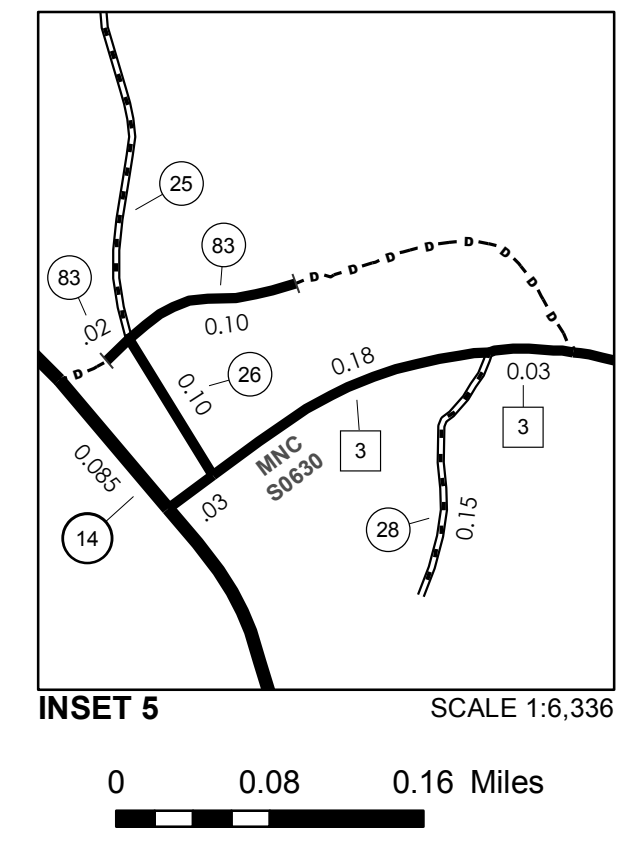
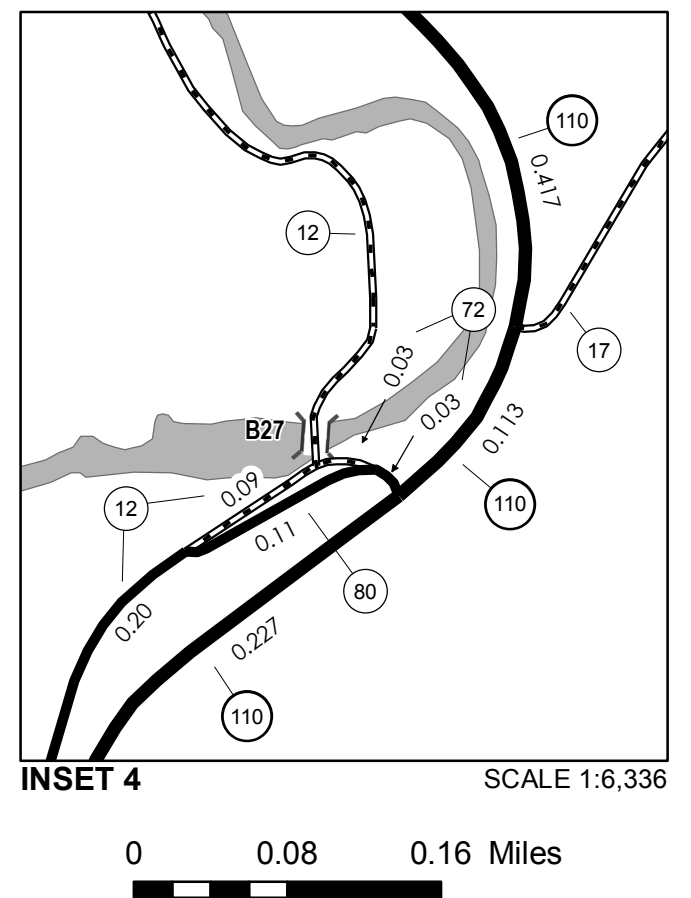
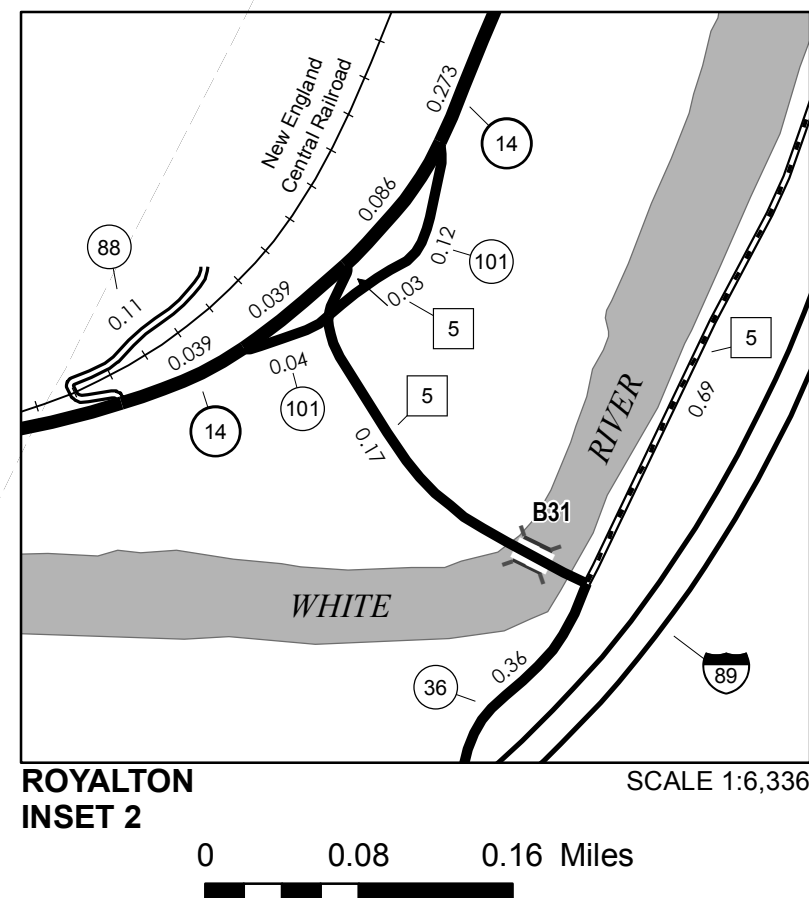
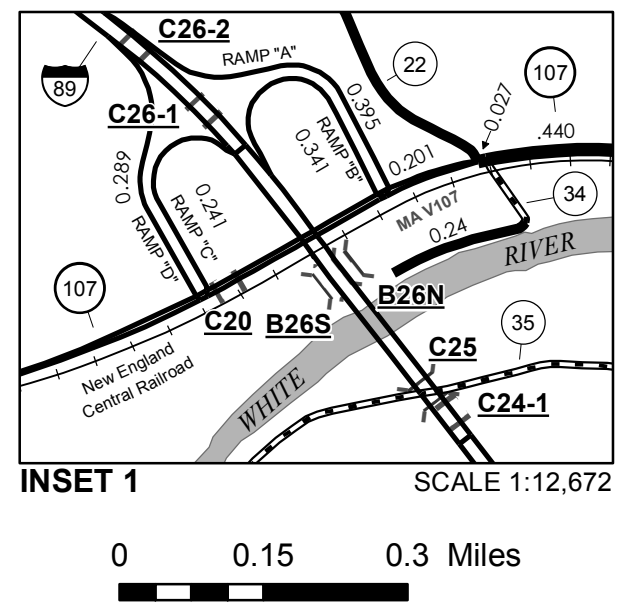
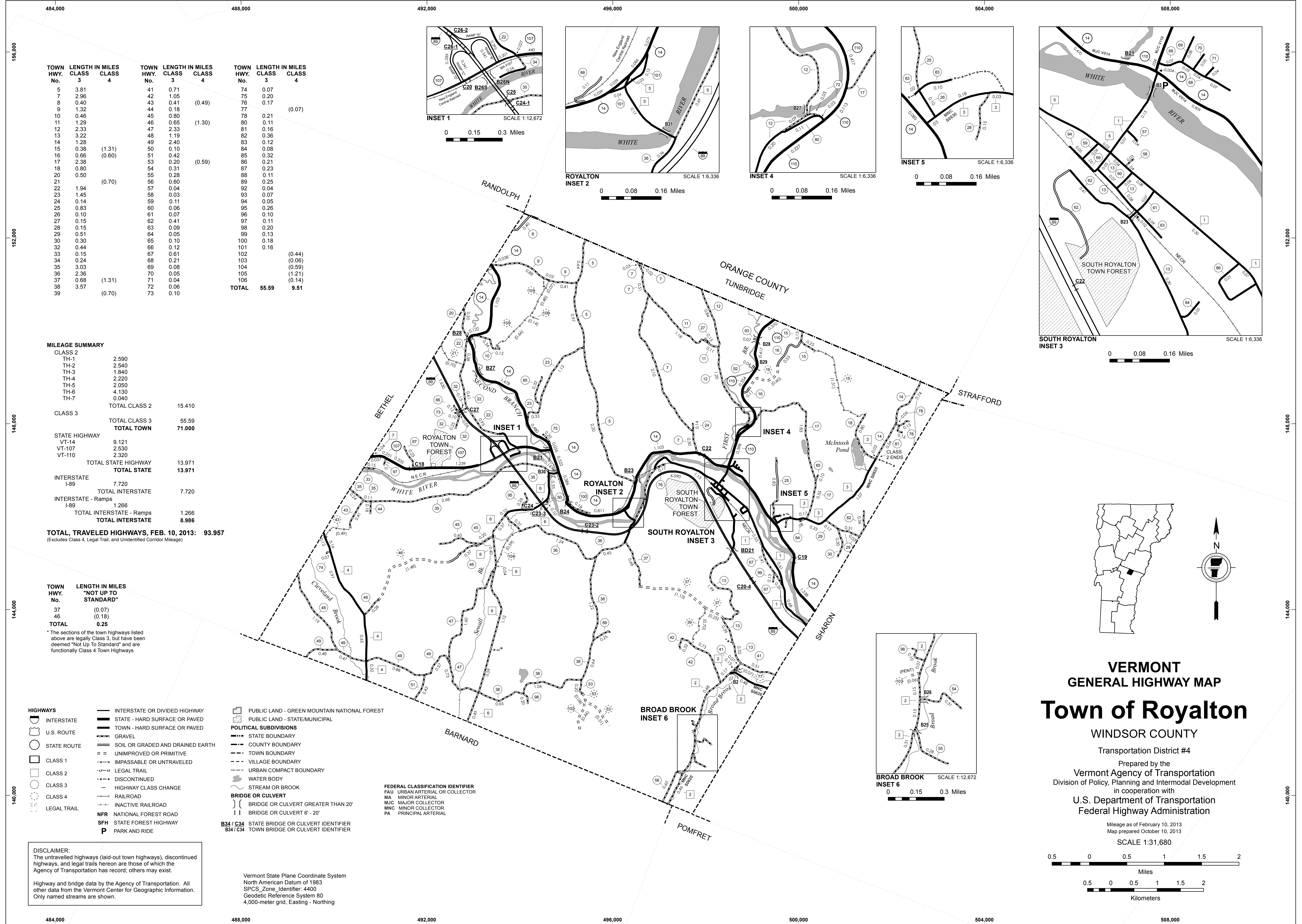
- POLITICAL SUBDIVISIONS**
- STATE BOUNDARY
 - COUNTY BOUNDARY
 - TOWN BOUNDARY
 - VILLAGE BOUNDARY
 - URBAN COMPACT BOUNDARY
 - WATER BODY
 - STREAM OR BROOK
- BRIDGE OR CULVERT**
- BRIDGE OR CULVERT GREATER THAN 20'
 - BRIDGE OR CULVERT 6' - 20'
- B34 / C34** STATE BRIDGE OR CULVERT IDENTIFIER
B34 / C34 TOWN BRIDGE OR CULVERT IDENTIFIER

- FEDERAL CLASSIFICATION IDENTIFIER**
- FAU URBAN ARTERIAL OR COLLECTOR
 - MA MINOR ARTERIAL
 - MJC MAJOR COLLECTOR
 - MNC MINOR COLLECTOR
 - PA PRINCIPAL ARTERIAL

Vermont State Plane Coordinate System
North American Datum of 1983
SPCS_Zone_Identifier: 4400
Geodetic Reference System 80
4,000-meter grid, Easting - Northing

DISCLAIMER:
The untraveled highways (laid-out town highways), discontinued highways, and legal trails herein are those of which the Agency of Transportation has record; others may exist.

Highway and bridge data by the Agency of Transportation. All other data from the Vermont Center for Geographic Information. Only named streams are shown.



VERMONT
GENERAL HIGHWAY MAP
Town of Royalton

WINDSOR COUNTY

Transportation District #4

Prepared by the
Vermont Agency of Transportation
Division of Policy, Planning and Intermodal Development
in cooperation with

U.S. Department of Transportation
Federal Highway Administration

Mileage as of February 10, 2013
Map prepared October 10, 2013

SCALE 1:31,680

