

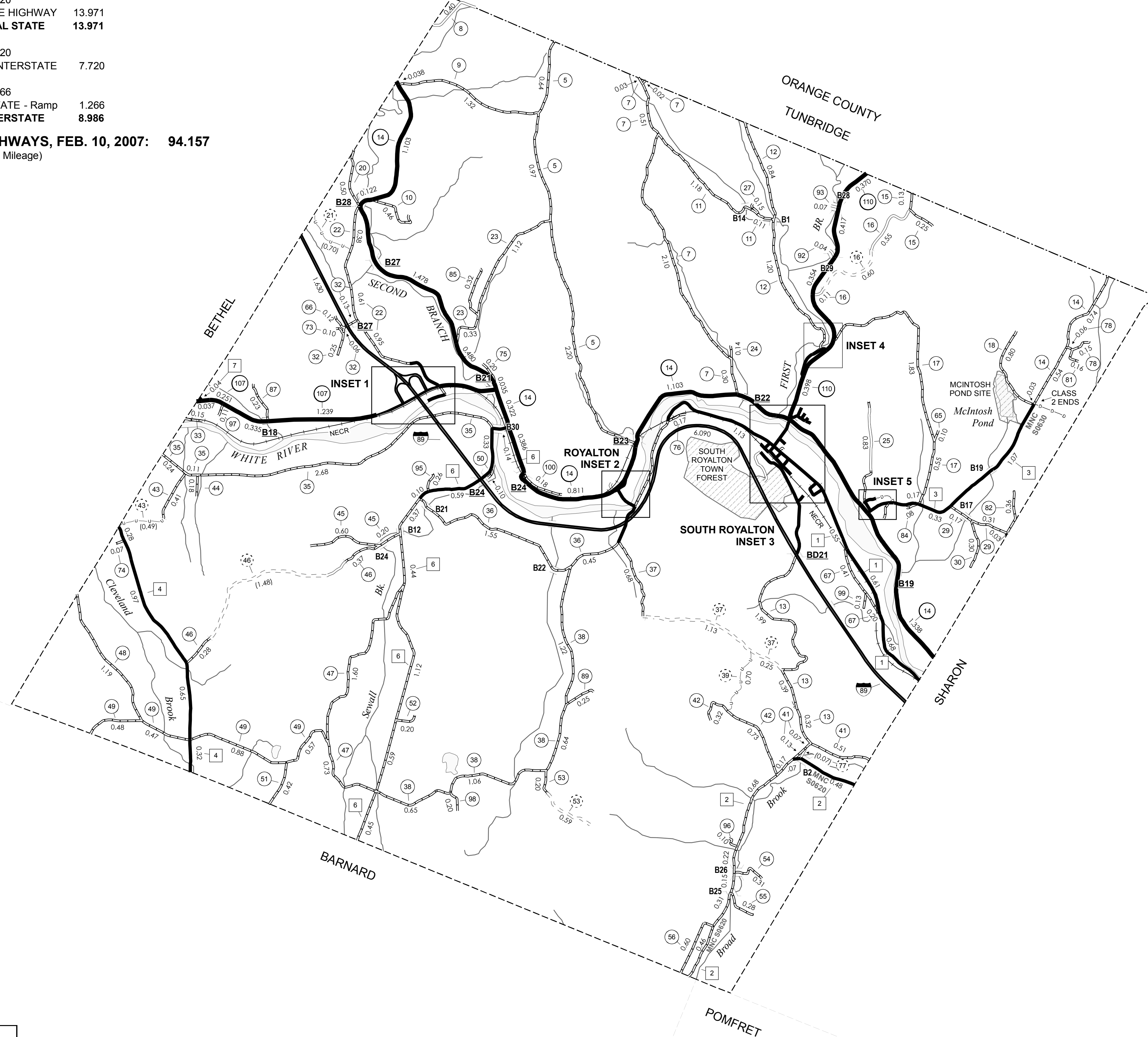
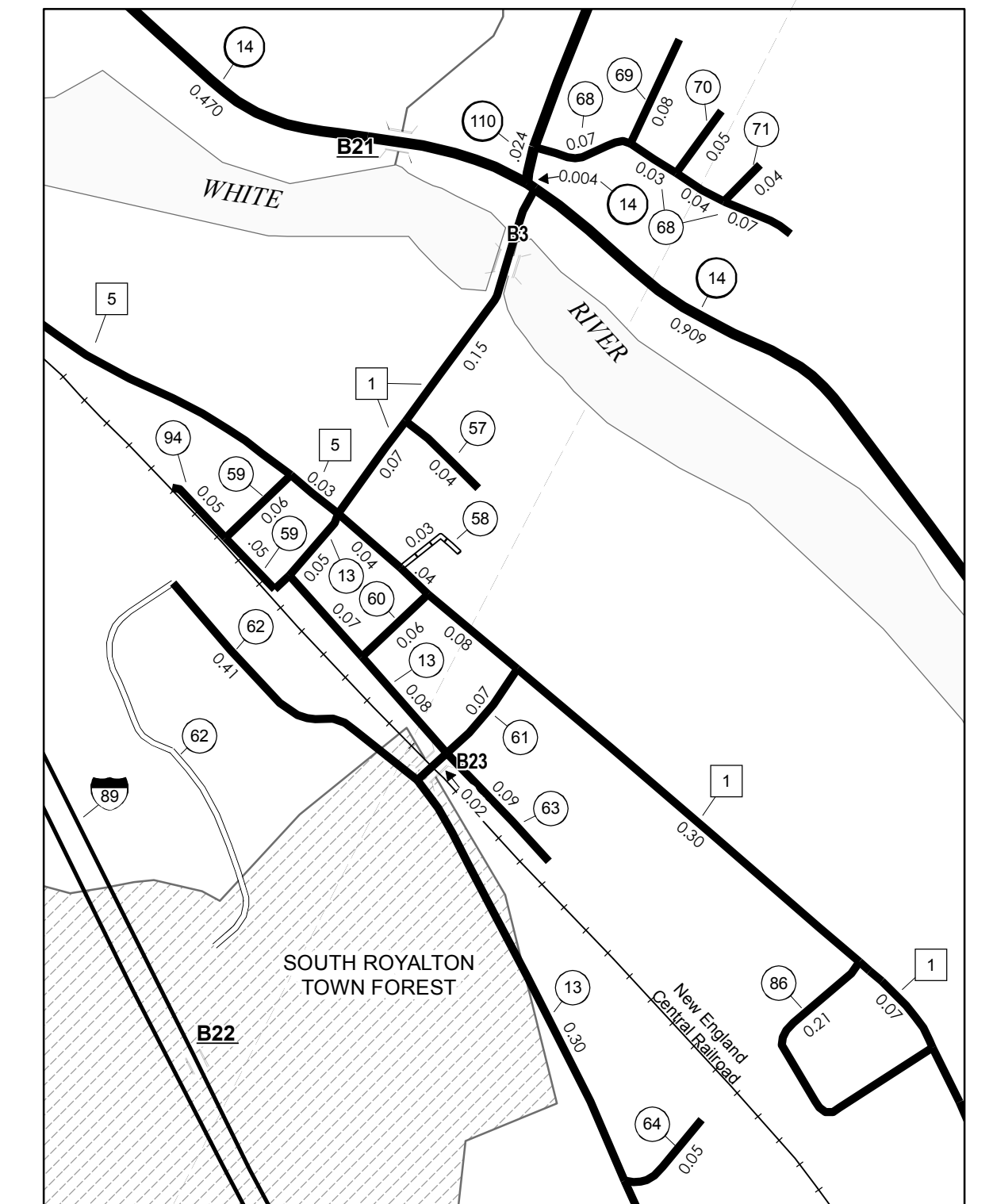
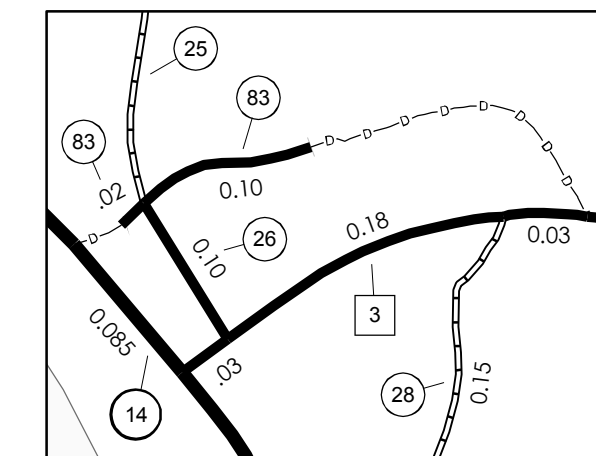
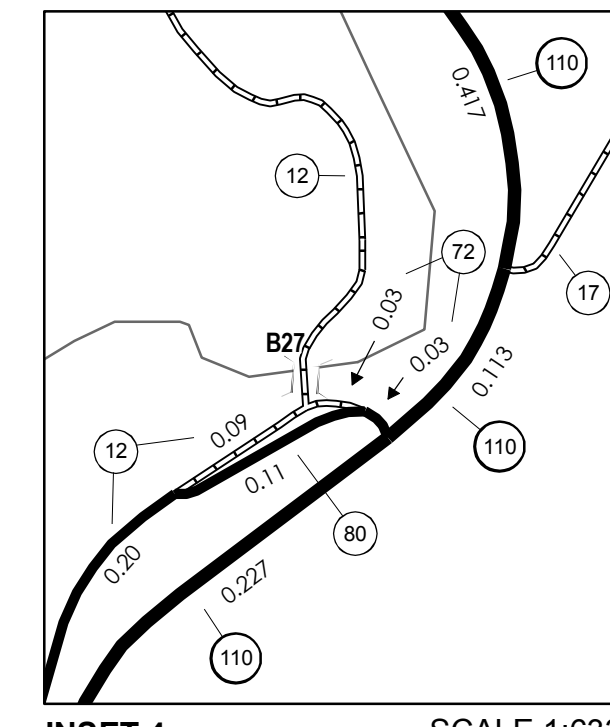
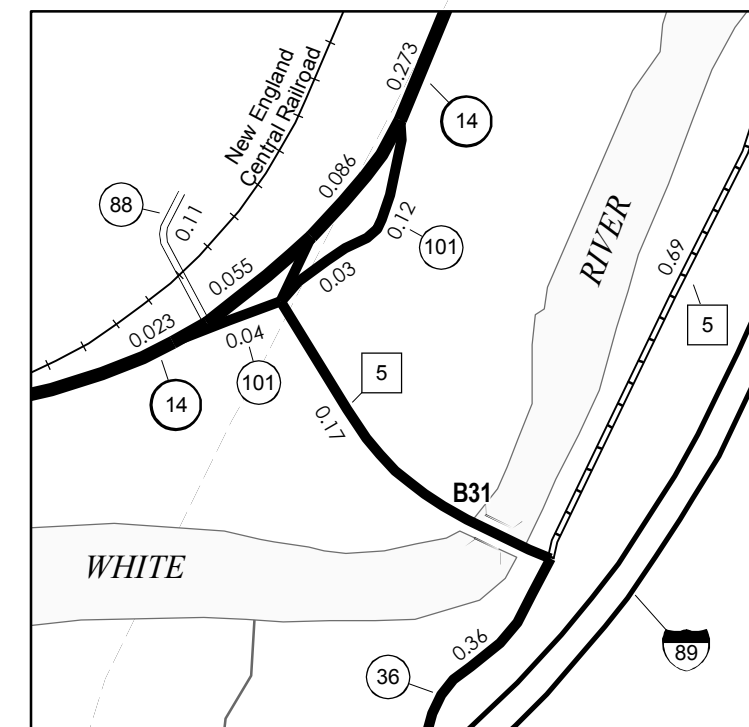
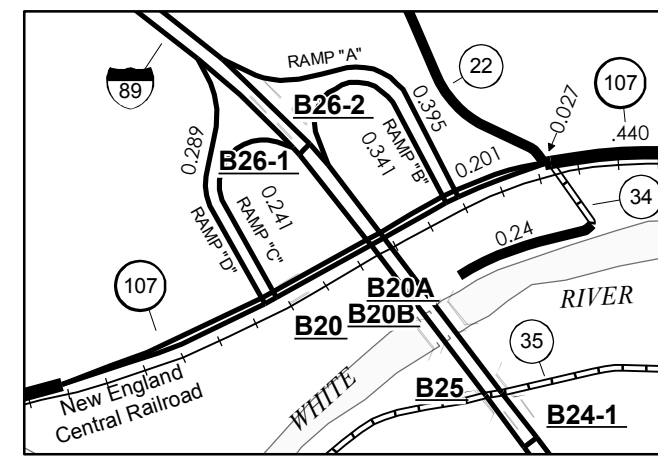
TOWN LENGTH IN MILES	HWY. CLASS	CLASS	
NO.	3	4	
5	3.810		54 0.310
7	2.960		55 0.280
8	0.400		56 0.600
9	1.320		57 0.040
10	0.460		58 0.030
11	1.290		59 0.110
12	2.330		60 0.060
13	3.220		61 0.070
14	1.280		62 0.410
15	0.380		63 0.090
16	0.660	(0.600)	64 0.050
17	2.380		65 0.100
18	0.800		66 0.120
20	0.500		67 0.610
21		(0.700)	68 0.210
22	1.940		69 0.080
23	1.450		70 0.050
24	0.140		71 0.040
25	0.830		72 0.060
26	0.100		73 0.100
27	0.150		74 0.070
28	0.150		75 0.200
29	0.510		76 0.170
30	0.300		77 0.170
32	0.440		78 0.210
33	0.150		80 0.110
34	0.240		81 0.160
35	0.030		82 0.360
36	2.360		83 0.120
37	0.680	(1.310)	84 0.080
38	3.570	(0.070)	85 0.320
39		(0.700)	86 0.210
41	0.710		87 0.230
42	1.050		88 0.110
43	0.410	(0.490)	89 0.250
44	0.180		92 0.040
45	0.800		93 0.070
46	0.650	(1.300)	94 0.050
46		(0.180)	95 0.260
47	2.330		96 0.100
48	1.190		97 0.110
49	2.400		98 0.200
50	0.100		99 0.130
51	0.420		100 0.180
52	0.200		101 0.160
53		(0.590)	<b>TOTAL 55.790 6.010</b>

**MILEAGE SUMMARY**

CLASS 2			
TH-1	2,590		
TH-2	2,540		
TH-3	1,840		
TH-4	2,220		
TH-5	2,050		
TH-6	4,130		
TH-7	0,040		
<b>TOTAL CLASS 2</b>	<b>15,410</b>		
CLASS 3			
<b>TOTAL CLASS 3</b>	<b>55,790</b>		
<b>TOTAL TOWN</b>	<b>71,200</b>		
STATE HIGHWAY			
VT-14	9,121		
VT-107	2,530		
VT-110	2,320		
<b>TOTAL STATE HIGHWAY</b>	<b>13,971</b>		
<b>TOTAL STATE</b>	<b>13,971</b>		
INTERSTATE			
I-89	7,720		
<b>TOTAL INTERSTATE</b>	<b>7,720</b>		
INTERSTATE - Ramp			
I-89	1,266		
<b>TOTAL INTERSTATE - Ramp</b>	<b>1,266</b>		
<b>TOTAL INTERSTATE</b>	<b>8,986</b>		

**TOTAL, TRAVELED HIGHWAYS, FEB. 10, 2007: 94.157**  
(Excludes Class 4 and Legal Trail Mileage)

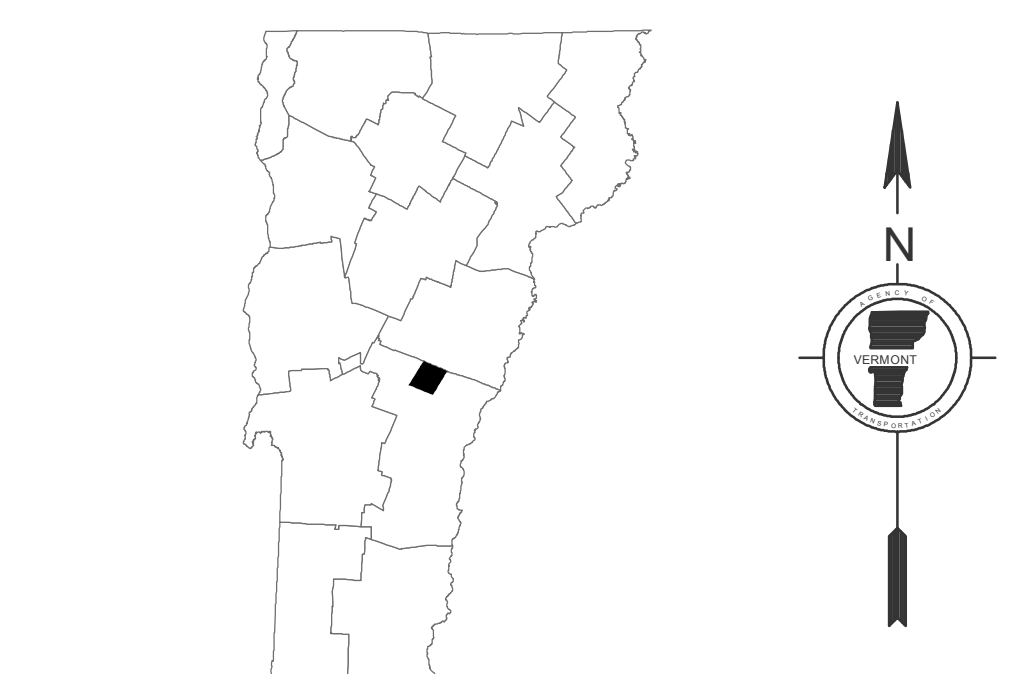
\* This portion of town highway is Class 3, but is functionally Class 4



- HIGHWAYS**
  - INTERSTATE
  - U.S. ROUTE
  - STATE ROUTE
  - CLASS 1
  - CLASS 2
  - CLASS 3
  - CLASS 4
  - LEGAL TRAIL
  - INTERSTATE OR DIVIDED HIGHWAY
  - STATE - HARD SURFACE OR PAVED
  - TOWN - HARD SURFACE OR PAVED
  - GRAVEL
  - SOIL OR GRADED AND DRAINED EARTH
  - UNIMPROVED OR PRIMITIVE
  - IMPASSABLE OR UNTRAVELED
  - LEGAL TRAIL
  - DISCONTINUED
  - HIGHWAY CLASS CHANGE
  - RAILROAD
- FEDERAL CLASSIFICATION IDENTIFIER**
  - FAU URBAN ARTERIAL OR COLLECTOR
  - MA MAJOR ARTERIAL
  - MJC MAJOR COLLECTOR
  - MNC MINOR COLLECTOR
  - PA PRINCIPAL ARTERIAL
- PUBLIC LAND**
- POLITICAL SUBDIVISIONS**
  - STATE BOUNDARY
  - COUNTY BOUNDARY
  - TOWN BOUNDARY
  - VILLAGE BOUNDARY
  - URBAN COMPACT BOUNDARY
- WATER BODIES**
  - OPEN WATER
  - SWAMP
  - STREAM OR BROOK
- BRIDGE OR CULVERT**
  - BRIDGE OR CULVERT GREATER THAN 20'
  - BRIDGE OR CULVERT 6' - 20'
- B34 STATE BRIDGE IDENTIFIER**
- B34 TOWN BRIDGE IDENTIFIER**

**DISCLAIMER:**  
The untraveled highways (laid-out town highways), discontinued highways, and legal trails shown hereon are those of which the Agency of Transportation has record; others may exist.  
Highway and bridge data by the Agency of Transportation, Policy & Planning Division. All other data from the Vermont Center for Geographic Information.

Vermont State Plane Coordinate System  
North American Datum of 1983  
SPCS\_Zone\_Identifier: 4400  
Geodetic Reference System 80  
4,000-meter grid, Easting - Northing



**VERMONT**  
**GENERAL HIGHWAY MAP**  
**Town of Royalton**  
WINDSOR COUNTY

Transportation District #4

Prepared by the  
Vermont Agency of Transportation  
Policy & Planning Division  
in cooperation with  
U.S. Department of Transportation  
Federal Highway Administration

Mileage as of: Feb. 10, 2007  
Map generated: October, 2007

