

TOWN HWY. No.	LENGTH IN MILES CLASS 3	LENGTH IN MILES CLASS 4	TOWN HWY. No.	LENGTH IN MILES CLASS 3	LENGTH IN MILES CLASS 4	TOWN HWY. No.	LENGTH IN MILES CLASS 3	LENGTH IN MILES CLASS 4
5	4.62		49	0.56		91	0.08	
6	3.32		50	0.55		92	0.09	
7	4.32		51	0.98		93	0.05	
8	0.65	(1.35)	52	0.20		94	0.25	
9	0.20	(0.90)	53	0.63		95		(0.94)
11		(0.51)	54	0.07		96		(2.35)
12	2.07	(0.33)	55		(0.57)	97		(1.29)
13		(0.20)	56	0.33	(0.07)	98		(1.51)
14	0.51		57	2.66		99		(0.53)
15		(1.33)	58	0.05		100		(1.16)
16	0.08	(0.34)	59		(0.34)	101		(0.51)
17	0.49	(0.40)	60	0.83		102		(0.43)
18	0.50		61	0.11		103		(0.63)
19	0.62		62	0.08		104		(1.00)
20	2.64		63	0.09		105		(1.14)
21		(0.19)	64	0.09		106		(0.40)
22	1.00		65	0.04		107		(1.18)
23	0.09		66	0.10		108		(0.21)
24	0.19		67	0.07		109		(0.21)
25	3.85		68	0.07		110		(0.10)
26	0.92		69	0.04		111		(0.03)
27	0.40	(0.19)	70	0.08		112		(0.16)
28		(1.13)	71	0.26		113		(0.12)
29	0.23		72		(0.03)	114		(0.22)
30	0.12		73	0.15		115		(0.14)
31	4.94		74	0.09		116		(0.48)
32	1.72		75		(0.25)	118		(0.05)
33		(0.34)	76		(0.08)	119		(0.20)
34	0.76		77	0.09		120		(0.46)
35	0.13		78	0.05		121		(0.77)
36	0.08		79	0.78	(0.07)	122		(0.79)
37		(0.80)	80		(0.46)	123		(0.58)
38	0.57		81	0.15		124		(0.60)
39		(0.79)	82	0.59	(0.26)	125		(0.90)
40	0.14		83	0.93		126		(0.33)
41	2.66		84	0.14		127		(0.13)
42		(0.83)	85	0.04	(0.06)	128		(0.15)
43	2.12		86	0.02		129		(0.30)
44	0.20		87	0.13		130		(0.57)
45	2.58	(0.80)	88	0.12		131		(0.05)
46	1.15		89	0.16		132		(0.49)
48	0.15		90	0.30		133		
<b>TOTAL</b>			<b>56.12</b>		<b>34.06</b>			

TOWN HWY. No.	LENGTH IN MILES "NOT UP TO STANDARD"
7	(0.46)
<b>TOTAL</b>	<b>0.46</b>

\* The sections of the town highways listed above are legally Class 3, but have been deemed "Not Up To Standard" and are functionally Class 4 Town Highways

- HIGHWAYS**
- INTERSTATE
  - U.S. ROUTE
  - STATE ROUTE
  - CLASS 1
  - CLASS 2
  - CLASS 3
  - CLASS 4
  - LEGAL TRAIL
  - GRAVEL
  - SOIL OR GRADED AND DRAINED EARTH
  - UNIMPROVED OR PRIMITIVE
  - IMPASSABLE OR UNTRAVELED
  - LEGAL TRAIL
  - DISCONTINUED
  - HIGHWAY CLASS CHANGE
  - RAILROAD
  - INACTIVE RAILROAD
  - PUBLIC LAND - NATIONAL FOREST
  - PUBLIC LAND - STATE/MUNICIPAL
- POLITICAL SUBDIVISIONS**
- STATE BOUNDARY
  - COUNTY BOUNDARY
  - TOWN BOUNDARY
  - VILLAGE BOUNDARY
  - URBAN COMPACT BOUNDARY
  - WATER BODY
  - STREAM OR BROOK
- BRIDGE OR CULVERT**
- BRIDGE OR CULVERT > 20'
  - BRIDGE OR CULVERT 6' - 20'
  - BIKE PATH STRUCTURE
  - VT CULVERTS BRIDGE
  - VT CULVERTS CULVERT > 6'
- B34 / C34 STATE BRIDGE OR CULVERT IDENTIFIER**
- B34 / C34 TOWN BRIDGE OR CULVERT IDENTIFIER
  - NFR NATIONAL FOREST ROAD
  - ACE ARMY CORPS OF ENGINEERS
  - USGH UNITED STATES GOV. HWY.
  - P PARK AND RIDE
- FEDERAL CLASSIFICATION IDENTIFIER**
- MA MINOR ARTERIAL
  - MJC MAJOR COLLECTOR
  - MNC MINOR COLLECTOR
  - PA PRINCIPAL ARTERIAL

**MILEAGE SUMMARY**

CLASS 1	0.892	TOTAL CLASS 1	0.892
TH-1			
CLASS 2	6.110	TOTAL CLASS 2	11.890
TH-2	0.050		
TH-3	0.560		
TH-4	0.890		
TH-5	3.540		
TH-6	0.790		
CLASS 2 - Ramps	0.050	TOTAL CLASS 2 - Ramps	0.050
TH-2			
CLASS 3	56.12	TOTAL CLASS 3	56.12
STATE HIGHWAY	6.121		
VT-12	0.890		
VT-14	0.890		
VT-107	4.273		
TOTAL STATE HIGHWAY	11.284		
STATE HIGHWAY - Ramps	0.033	TOTAL STATE HIGHWAY - Ramps	0.033
VT-107			
TOTAL STATE	11.317		
INTERSTATE	2.925	TOTAL INTERSTATE	2.925
I-89			
TOTAL, TRAVELED HIGHWAYS, FEB. 10, 2026:	<b>83.194</b>		

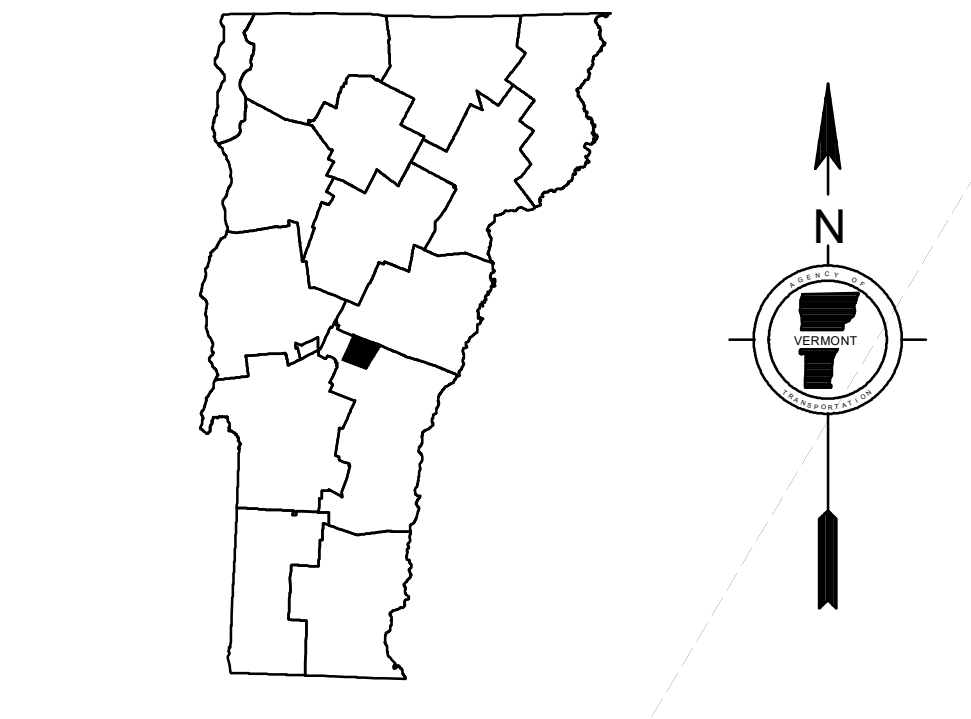
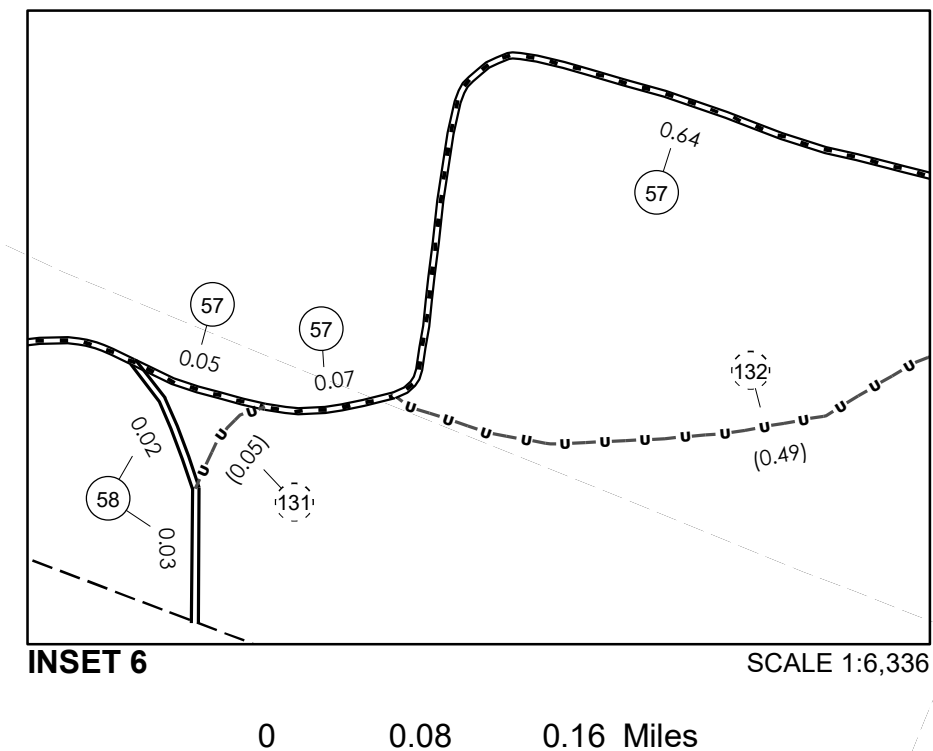
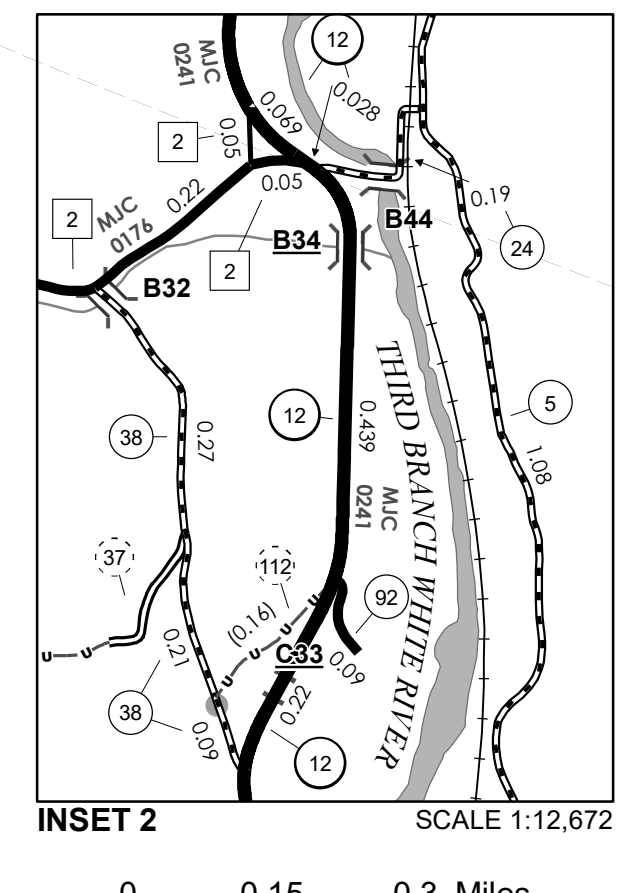
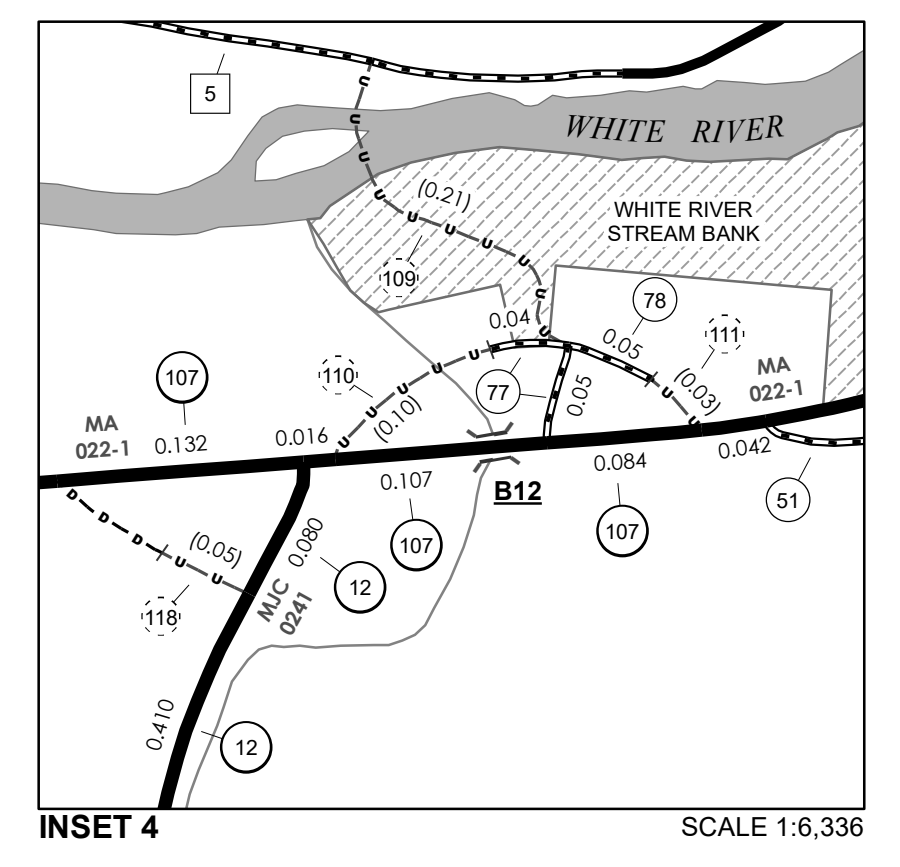
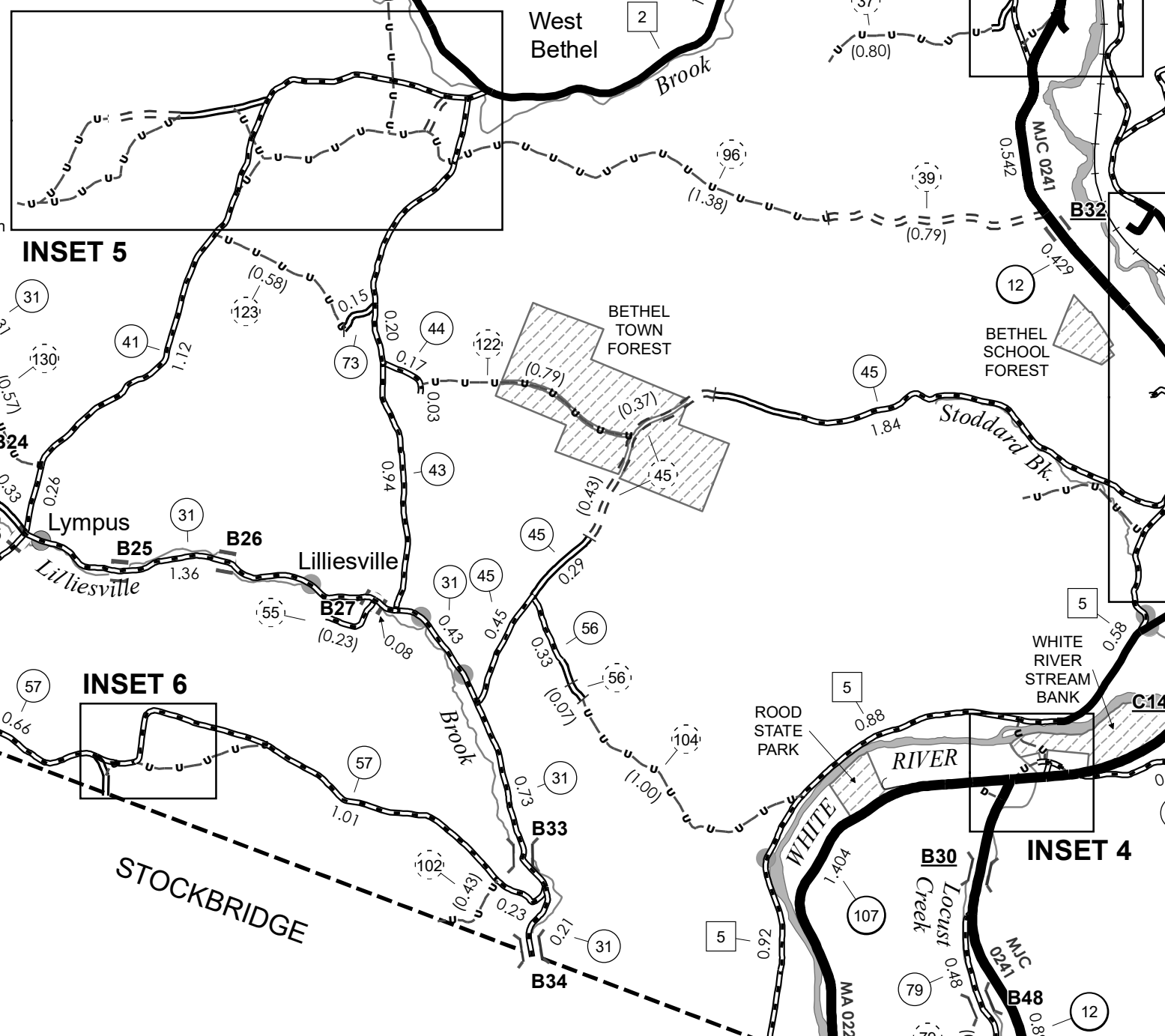
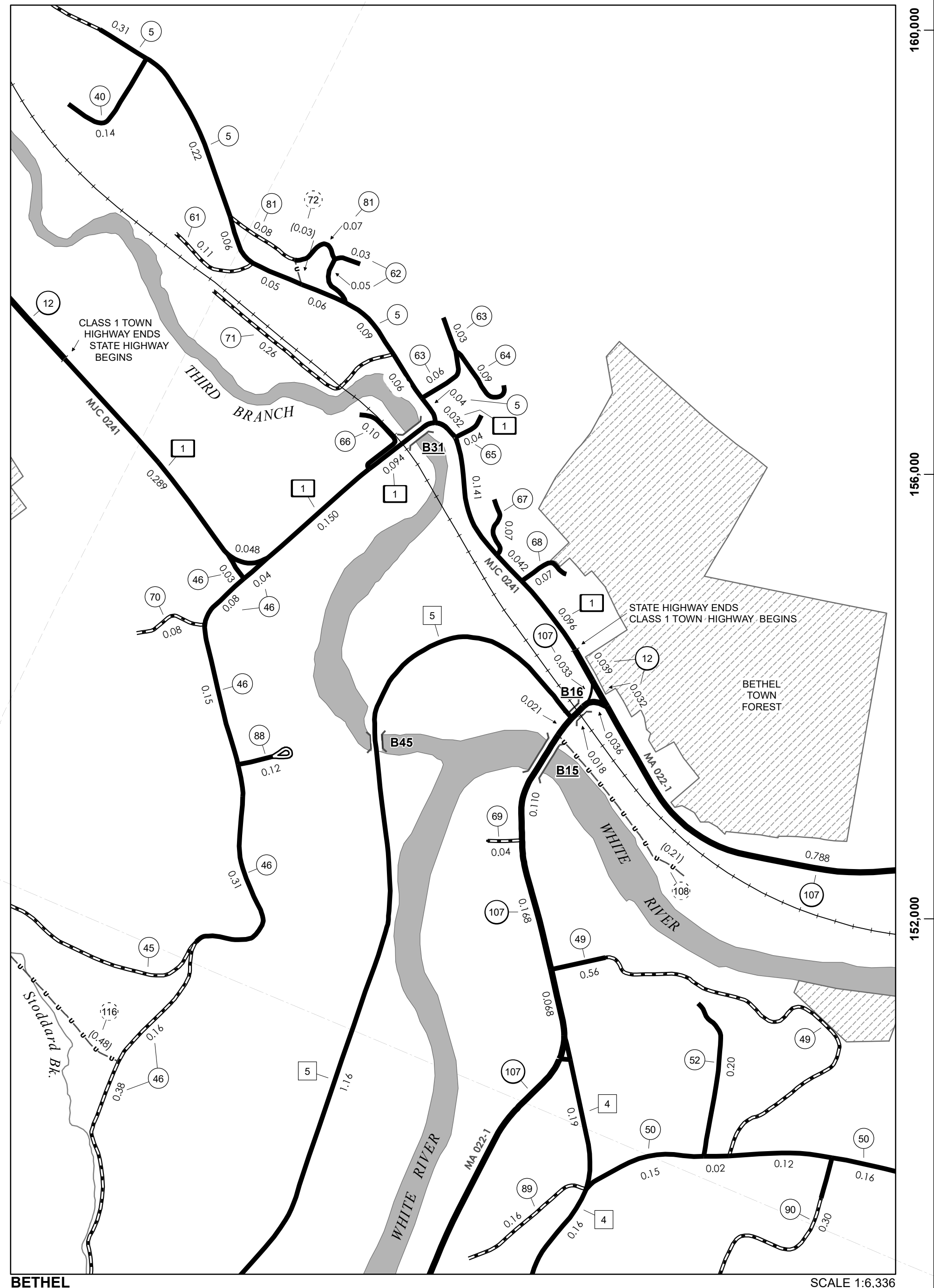
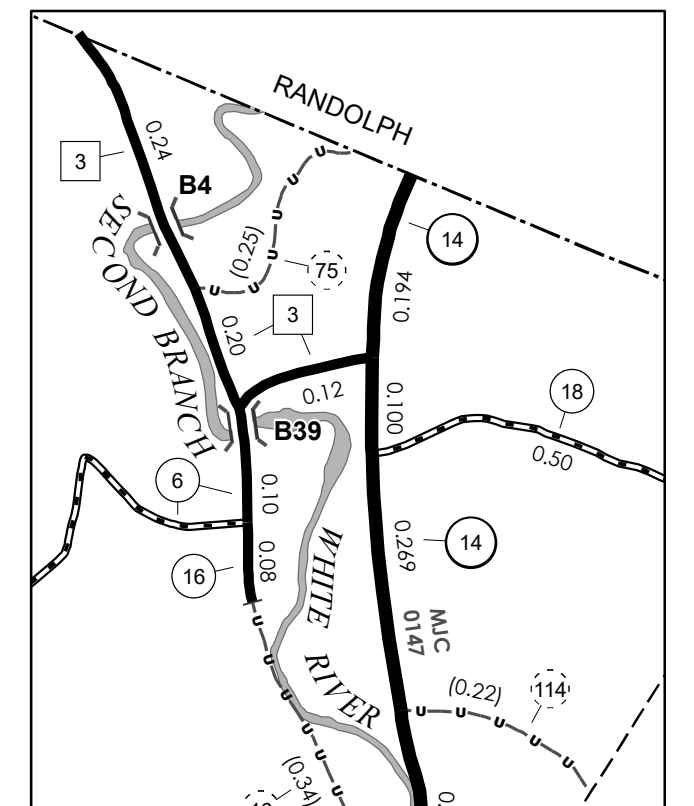
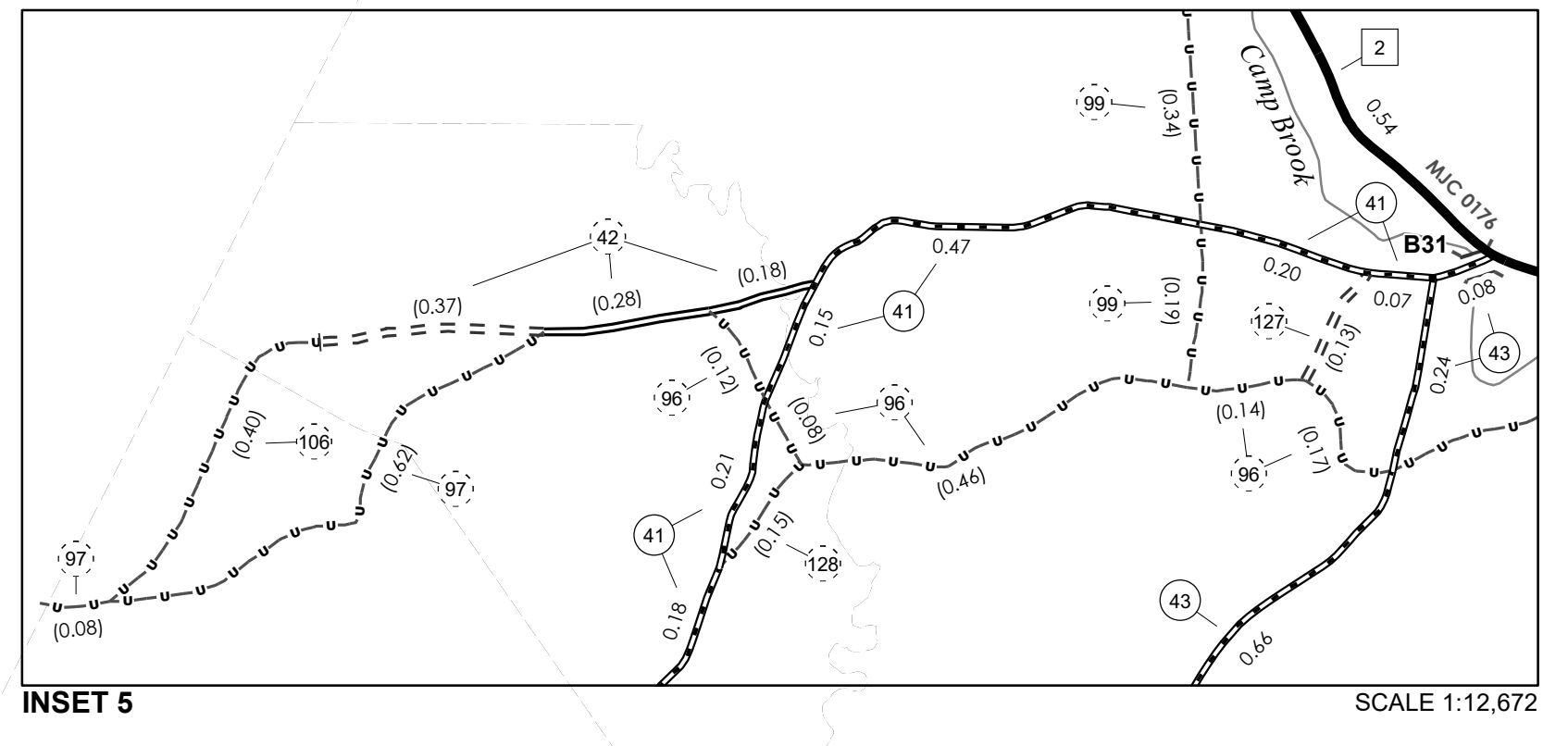
(Excludes Class 4 and Legal Trail Mileage)

**DISCLAIMER:**  
The untraveled highways (laid-out town highways), discontinued highways, and legal trails herein are those of which the Agency of Transportation has record; others may exist.

Highway and bridge data by the Agency of Transportation. Town short structures drawn from the VTCULVERTS (formerly VOBCIT) online database. All other data from the Vermont Open Geodata Portal. Only named streams shown.

**Accessibility Statement:** The Agency of Transportation is committed to ensuring accessibility and digital accessibility for all. If you need language assistance, reasonable accommodation, or alternative format, please email johnathan.croft@vermont.gov.

Vermont State Plane Coordinate System  
North American Datum of 1983  
SPCS\_Zone\_Identifier: 4400  
Geodetic Reference System: 80  
4,000-meter grid, Easting - Northing



**VERMONT**  
**GENERAL HIGHWAY MAP**  
**Town of Bethel**  
WINDSOR COUNTY  
Transportation District #4  
Prepared by the  
Vermont Agency of Transportation  
Highway Division  
in cooperation with  
U.S. Department of Transportation  
Federal Highway Administration  
Map prepared June 10, 2026  
SCALE 1:31,680