

476,000 480,000 484,000 488,000 492,000 496,000 500,000

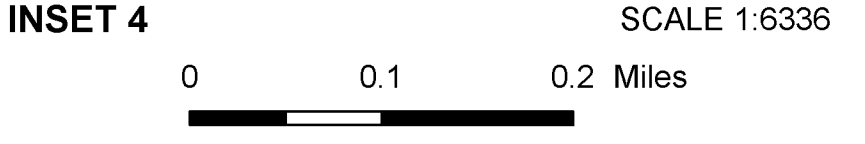
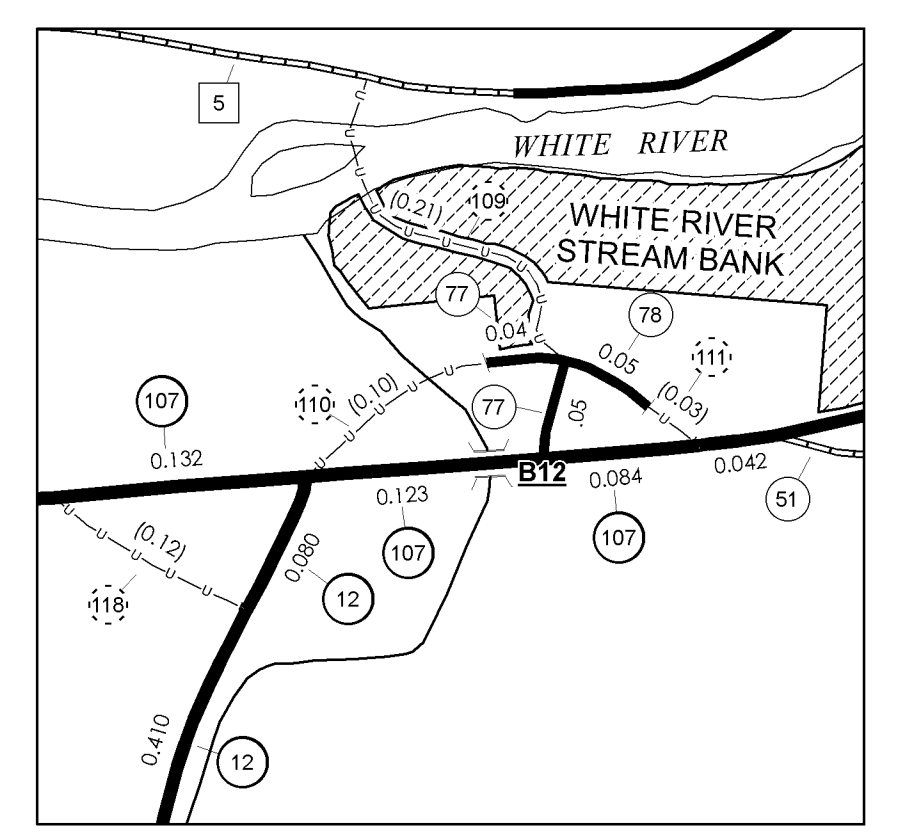
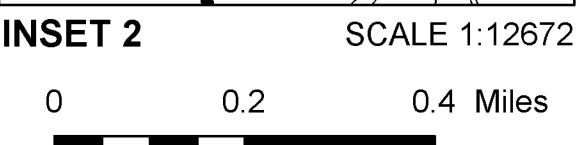
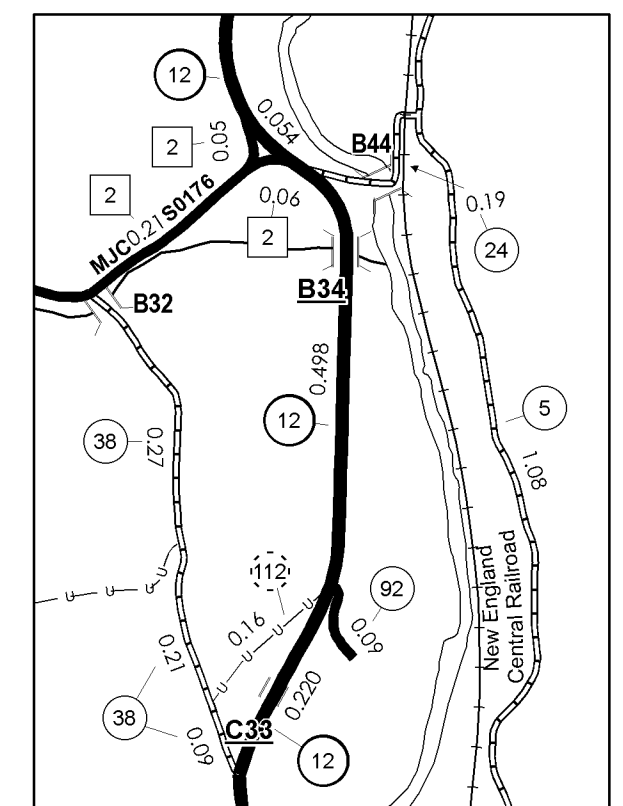
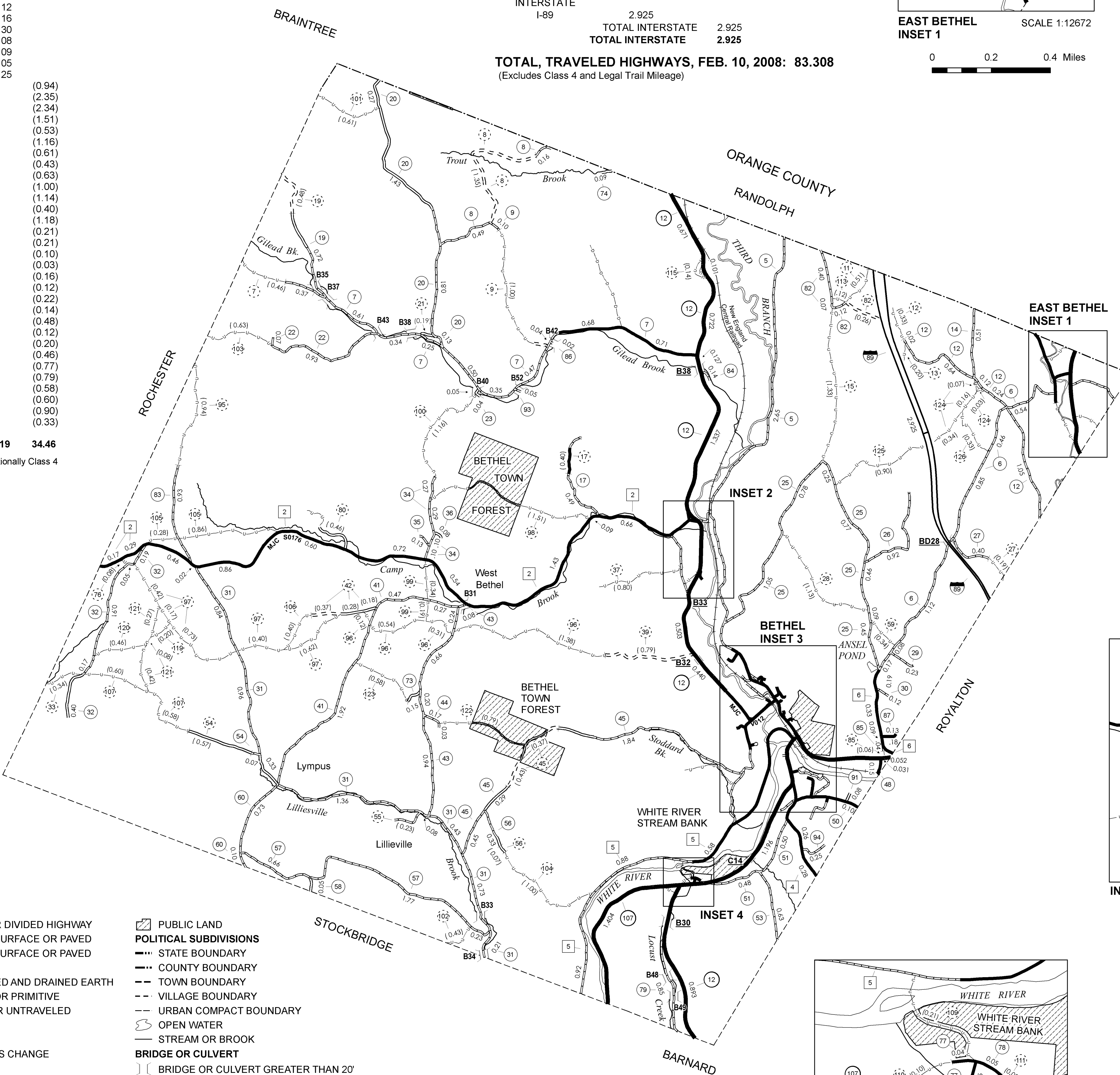
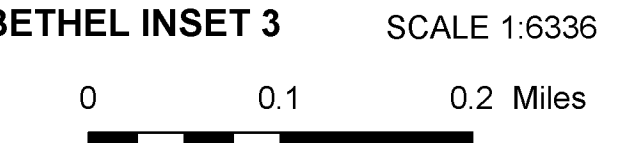
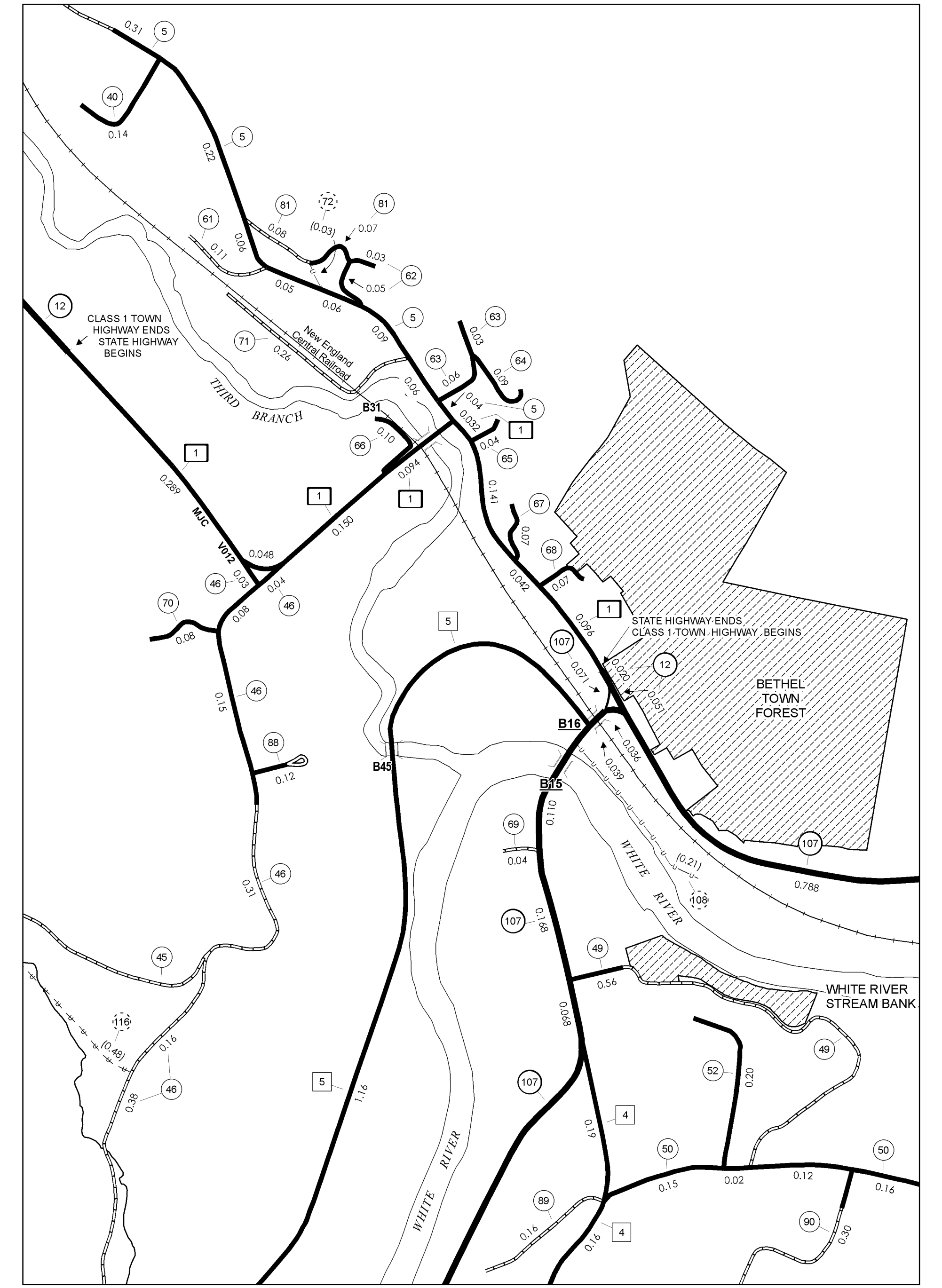
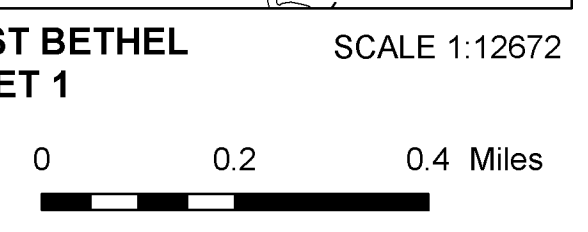
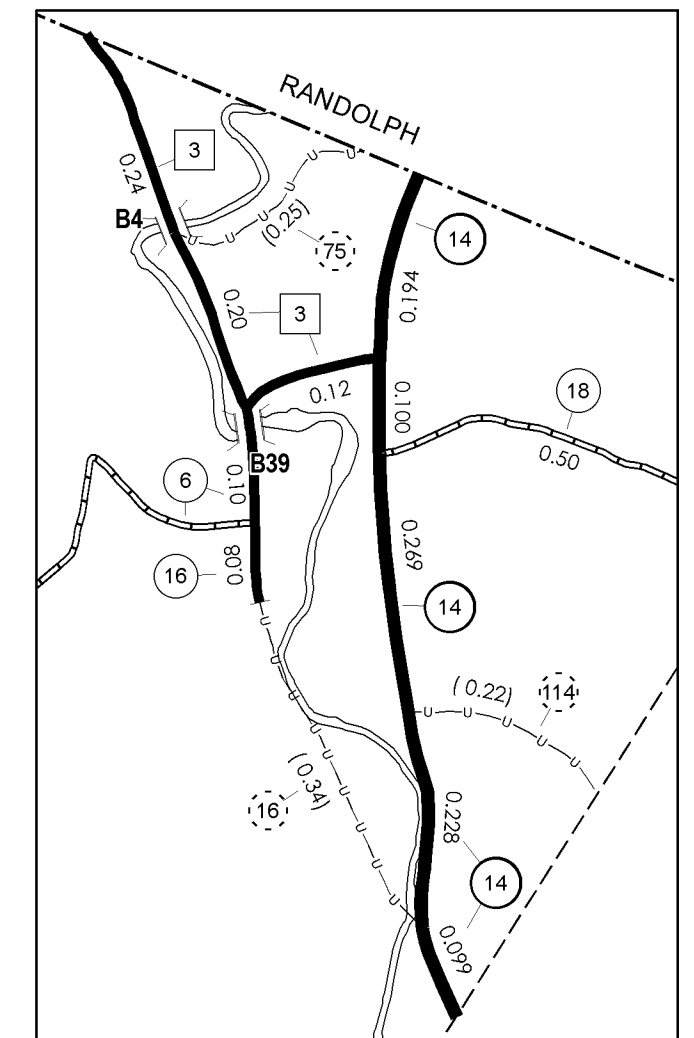
TOWN HWY. NO.	LENGTH IN MILES CLASS 3	LENGTH IN MILES CLASS 4	TOTAL
5	4.62	0.10	4.72
6	3.32	0.07	3.39
7	4.32	0.07	4.39
8	0.65	0.08	0.73
9	0.10	0.26	0.36
11		0.15	0.15
12	2.07	0.09	2.16
13		0.25	0.25
14	0.51	0.08	0.59
15		0.09	0.09
16	0.08	0.05	0.13
17	0.49	0.85	1.34
18	0.50	0.46	0.96
19	0.72	0.15	0.87
20	2.64	0.26	2.90
21		0.93	0.93
22	1.00	0.14	1.14
23	0.09	0.04	0.13
24	0.19	0.02	0.21
25	3.85	0.13	3.98
26	0.92	0.12	1.04
27	0.40	0.16	0.56
28		0.30	0.30
29	0.23	0.08	0.31
30	0.12	0.09	0.21
31	4.94	0.25	5.19
32	1.72		1.72
33		0.94	0.94
34	0.76	2.35	3.11
35	0.13	2.34	2.47
36	0.08	1.51	1.59
37		0.53	0.53
38	0.57	1.16	1.73
39		0.61	0.61
40	0.14	0.43	0.57
41	2.66	0.63	3.29
42		1.00	1.00
43	0.83	1.14	1.97
44	2.12	0.40	2.52
45	0.20	1.18	1.38
46	2.58	0.21	2.79
47	1.15	0.21	1.36
48	0.15	0.10	0.25
49	0.56	0.03	0.59
50	0.55	0.16	0.71
51	0.98	0.12	1.10
52	0.20	0.22	0.42
53	0.63	0.14	0.77
54	0.07	0.48	0.55
55		0.12	0.12
56	0.33	0.20	0.53
57	2.66	0.46	3.12
58	0.05	0.77	0.82
59		0.79	0.79
60	0.83	0.58	1.41
61	0.11	0.60	0.71
62	0.08	0.90	0.98
63	0.09	0.33	0.42
64	0.09		0.09
65	0.04		0.04
TOTAL	56.19	34.46	90.65

* This portion of town highway is Class 3, but is functionally Class 4

MILEAGE SUMMARY

CLASS 1	0.892	TOTAL CLASS 1	0.892
TH-1			
CLASS 2	6.160	TOTAL CLASS 2	11.940
TH-2	0.560		
TH-3	0.890		
TH-4	3.540		
TH-5	0.790		
TH-6			
CLASS 3	56.190	TOTAL CLASS 3	56.190
STATE HIGHWAY		TOTAL TOWN	69.022
VT-12	6.127		
VT-14	0.890		
VT-107	4.273		
STATE HIGHWAY - Ramp		TOTAL STATE HIGHWAY	11.290
VT-107	0.071		
TOTAL STATE HIGHWAY - Ramp	0.071	TOTAL STATE	11.361
INTERSTATE			
I-89	2.925	TOTAL INTERSTATE	2.925
		TOTAL INTERSTATE	2.925

TOTAL, TRAVELED HIGHWAYS, FEB. 10, 2008: 83.308
(Excludes Class 4 and Legal Trail Mileage)



- HIGHWAYS**
- INTERSTATE OR DIVIDED HIGHWAY
 - INTERSTATE
 - U.S. ROUTE
 - STATE ROUTE
 - CLASS 1
 - CLASS 2
 - CLASS 3
 - CLASS 4
 - LEGAL TRAIL
- FEDERAL CLASSIFICATION IDENTIFIER**
- FAU URBAN ARTERIAL OR COLLECTOR
 - MA MINOR ARTERIAL
 - MJC MAJOR COLLECTOR
 - MNC MINOR COLLECTOR
 - PA PRINCIPAL ARTERIAL
- POLITICAL SUBDIVISIONS**
- STATE BOUNDARY
 - COUNTY BOUNDARY
 - TOWN BOUNDARY
 - VILLAGE BOUNDARY
 - URBAN COMPACT BOUNDARY
 - OPEN WATER
 - STREAM OR BROOK
- BRIDGE OR CULVERT**
- BRIDGE OR CULVERT GREATER THAN 20'
 - BRIDGE OR CULVERT 6' - 20'
- B34 / C34 STATE BRIDGE OR CULVERT IDENTIFIER**
- B34 / C34 TOWN BRIDGE OR CULVERT IDENTIFIER**

DISCLAIMER:
The untraveled highways (laid-out town highways), discontinued highways, and legal trails shown hereon are those of which the Agency of Transportation has record; others may exist.
Highway and bridge data by the Agency of Transportation, Policy & Planning Division. All other data from the Vermont Center for Geographic Information.

STRUCTURES - SURFACE WATER NOTE:
Town short structures (bridges or culverts from 6-feet to less than 20-feet) were not represented due to inconsistencies in the data.
The surface waters are from the Vermont Hydrological Dataset (VHD). Only the named streams are shown.

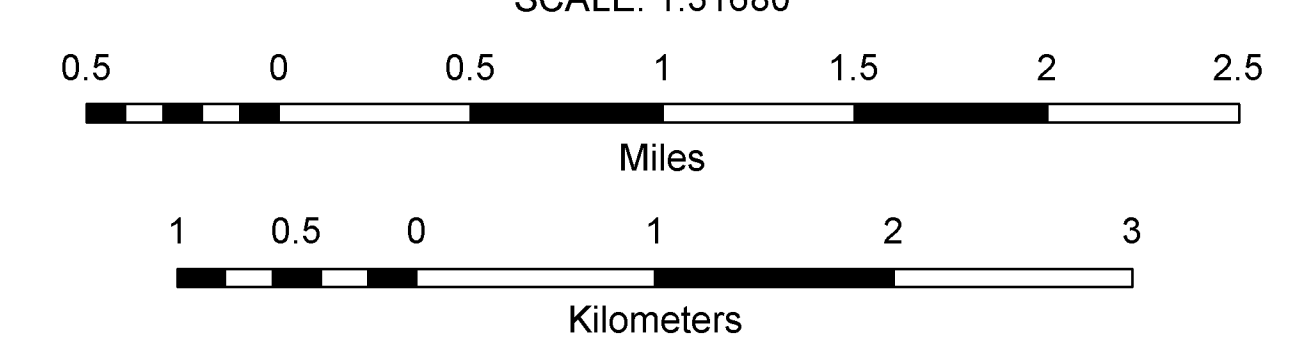
VERMONT GENERAL HIGHWAY MAP
Town of Bethel
WINDSOR COUNTY

Transportation District #4

Prepared by the
Vermont Agency of Transportation
Policy & Planning Division
in cooperation with
U.S. Department of Transportation
Federal Highway Administration

Mileage as of: February 10, 2008
Map generated: September, 2008

SCALE: 1:31680



Vermont State Plane Coordinate System
North American Datum of 1983
SPCS Zone Identifier: 4400
Geodetic Reference System 80
4,000-meter grid, Easting - Northing