

TOWN HWY. No.	LENGTH IN MILES CLASS 3	LENGTH IN MILES CLASS 4
5	5.70	
6	0.19	
7	0.58	
8	1.14	(0.70)
11	0.54	(0.48)
12	0.59	
13	0.15	(0.59)
14	1.84	(0.06)
15		(0.15)
17		(1.11)
18	0.50	(0.47)
19		(0.14)
20	0.30	
21	0.10	
22	0.07	
23	1.09	
24	0.95	(0.25)
25	0.27	
26	0.62	(2.79)
27	0.02	
28	1.45	
29	1.35	
30	0.42	
31	0.26	
32	0.23	(1.93)
33	1.43	
36	0.33	
37	2.23	
38	0.75	
39	1.98	
40	0.05	
43		(1.65)
44	0.20	(0.83)
45		(0.70)
46		(0.60)
47	3.09	(1.60)
48	0.08	(3.32)
49	0.09	
50	0.33	(0.96)
51	0.40	
52		(1.70)
54		(0.16)
55		(0.10)
56	2.56	(1.17)
57	1.10	(0.53)
58		(0.38)
60		(1.21)
61	2.65	
62	1.65	
63	1.25	
64	1.00	
66		(0.08)
68	0.31	(0.02)
70	0.19	
72	0.37	
73		(1.05)
74	0.24	
75	0.34	(0.22)
79	0.24	
80		(0.03)
81	0.07	
85		(0.74)
86		(1.24)
87		(1.16)
88		(0.84)
89		(1.22)
90		(1.17)
93		(2.68)
94		(0.97)
95		(1.34)
96		(0.51)
97		(0.26)
98		(0.66)
99		(0.57)
101		(1.25)
102		(0.55)
103		(0.38)
104		(1.25)
105		(0.88)
106		(0.24)
107		(0.61)
108		(0.37)
<b>TOTAL</b>	<b>41.09</b>	<b>43.87</b>

**MILEAGE SUMMARY**

CLASS 2		
TH-1	3.940	
TH-2	6.140	
TH-3	3.950	
TH-4	1.610	
<b>TOTAL CLASS 2</b>	<b>15.640</b>	
<b>TOTAL CLASS 3</b>	<b>41.09</b>	
<b>TOTAL TOWN</b>	<b>56.730</b>	

STATE HIGHWAY		
VT-12	9.615	
<b>TOTAL STATE HIGHWAY</b>	<b>9.615</b>	
<b>TOTAL STATE</b>	<b>9.615</b>	

**TOTAL, TRAVELED HIGHWAYS, FEB. 10, 2024: 66.345**  
(Excludes Class 4 and Legal Trail Mileage)

TOWN HWY. No.	LENGTH IN MILES "NOT UP TO STANDARD"
8	(0.16)
9	(0.06)
30	(0.15)
49	(0.22)
<b>TOTAL</b>	<b>0.59</b>

\* The sections of the town highways listed above are legally Class 3, but have been deemed "Not Up To Standard" and are functionally Class 4 Town Highways

LEGAL TRAIL No.	LENGTH IN MILES LEGAL TRAIL
1	(0.01)
2	(0.16)
3	(0.43)
4	(1.85)
<b>TOTAL</b>	<b>2.45</b>

**HIGHWAYS**

- INTERSTATE
- U.S. ROUTE
- STATE ROUTE
- CLASS 1
- CLASS 2
- CLASS 3
- CLASS 4
- LEGAL TRAIL
- PARK AND RIDE

**INTERSTATE OR DIVIDED HIGHWAY**

**STATE - HARD SURFACE OR PAVED**

**TOWN - HARD SURFACE OR PAVED**

**GRAVEL**

**SOIL OR GRADED AND DRAINED EARTH**

**UNIMPROVED OR PRIMITIVE**

**IMPASSABLE OR UNTRAVELED**

**LEGAL TRAIL**

**DISCONTINUED**

**HIGHWAY CLASS CHANGE**

**RAILROAD**

**INACTIVE RAILROAD**

**PUBLIC LAND - NATIONAL FOREST**

**PUBLIC LAND - STATE/MUNICIPAL**

**NFR NATIONAL FOREST ROAD**

**ACE ARMY CORPS OF ENGINEERS**

**USGH UNITED STATES GOV. HWY.**

**POLITICAL SUBDIVISIONS**

- STATE BOUNDARY
- COUNTY BOUNDARY
- TOWN BOUNDARY
- VILLAGE BOUNDARY
- URBAN COMPACT BOUNDARY
- WATER BODY
- STREAM OR BROOK

**BRIDGE OR CULVERT**

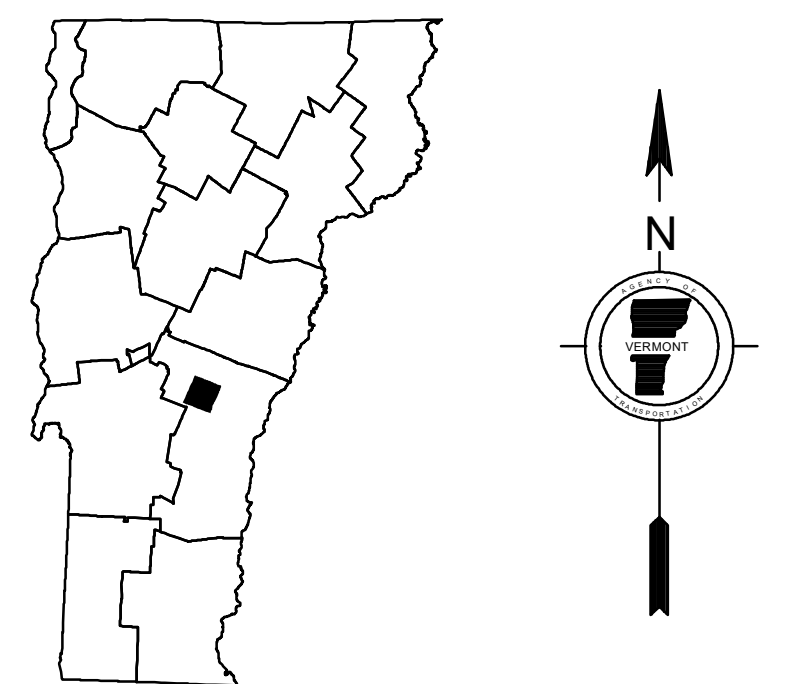
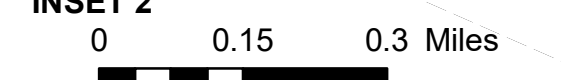
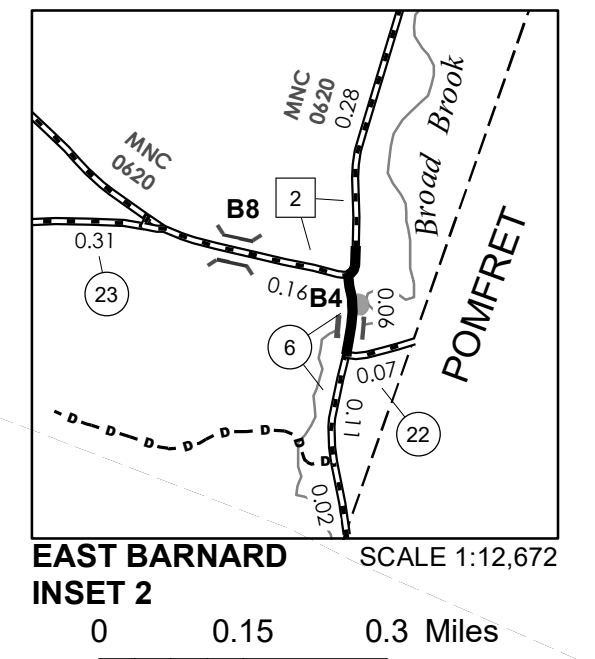
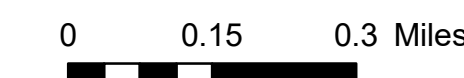
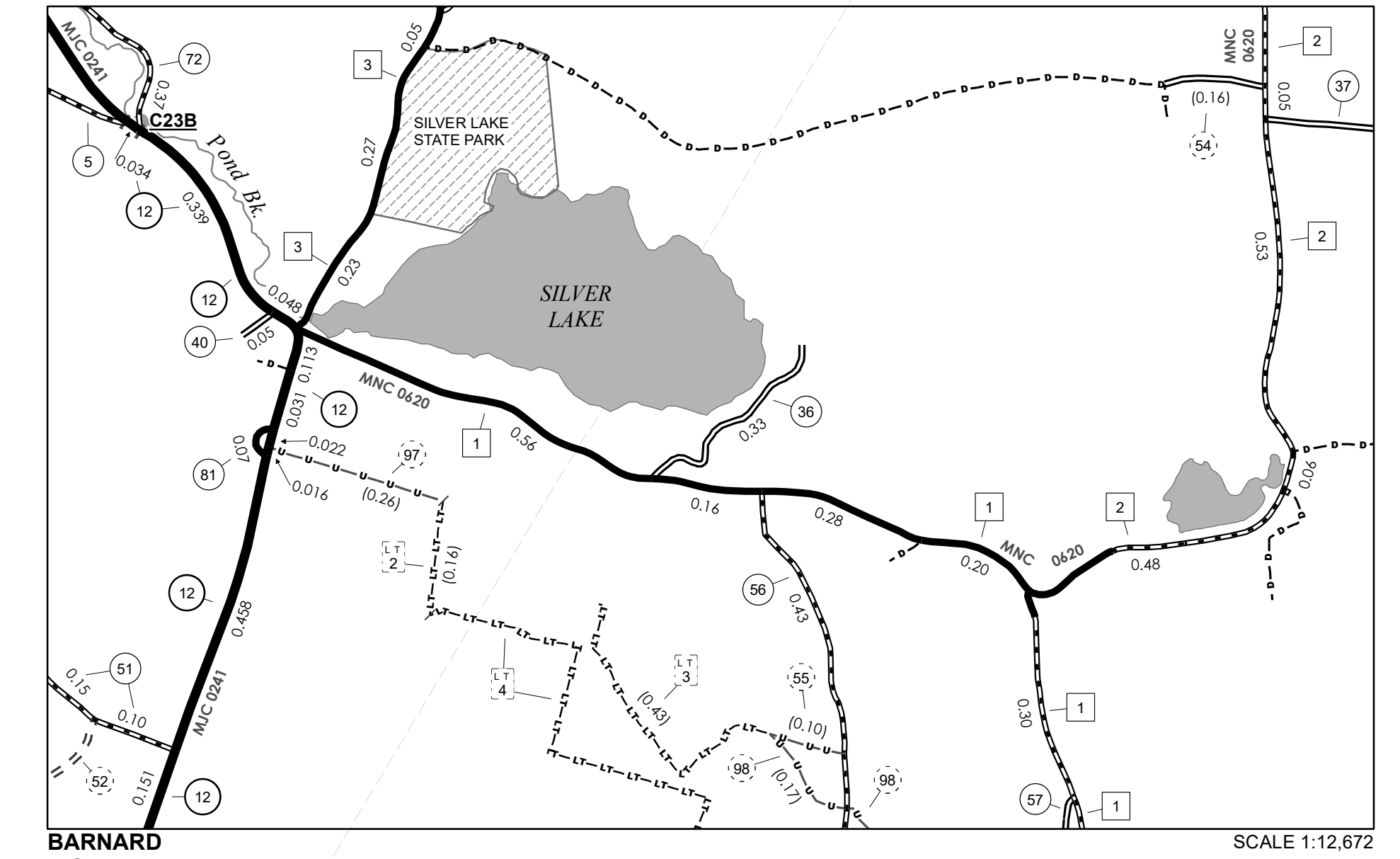
- BRIDGE OR CULVERT > 20'
- BRIDGE OR CULVERT 6' - 20'
- BIKE PATH STRUCTURE
- VT CULVERTS BRIDGE
- VT CULVERTS CULVERT > 6'

**B34 / C34 STATE BRIDGE OR CULVERT IDENTIFIER**

**B34 / C34 TOWN BRIDGE OR CULVERT IDENTIFIER**

**FEDERAL CLASSIFICATION IDENTIFIER**

- MA MINOR ARTERIAL
- MJC MAJOR COLLECTOR
- MNC MINOR COLLECTOR
- PA PRINCIPAL ARTERIAL



**VERMONT GENERAL HIGHWAY MAP**

**Town of Barnard**

WINDSOR COUNTY

Transportation District #4

Prepared by the  
**Vermont Agency of Transportation**  
 Division of Policy, Planning and Intermodal Development  
 in cooperation with  
**U.S. Department of Transportation**  
 Federal Highway Administration

Mileage as of February 10, 2024  
 Map prepared July 25, 2024  
**SCALE 1:31,680**



**DISCLAIMER:**  
 The untraveled highways (laid-out town highways), discontinued highways, and legal trails herein are those of which the Agency of Transportation has record; others may exist.

Highway and bridge data by the Agency of Transportation. Town short structures drawn from the VT CULVERTS (formerly VOBCT) online database. All other data from the Vermont Open Geodata Portal. Only named streams shown.