

TOWN HWY. No.	LENGTH IN MILES CLASS 3	LENGTH IN MILES CLASS 4
5	5.70	
6	0.19	
7	0.58	
8	1.14	(0.70)
11	0.54	(0.48)
12	0.59	
13	0.15	(0.59)
14	1.84	(0.06)
15		(0.15)
17		(1.11)
18	0.50	(0.47)
19		(0.14)
20	0.30	
21	0.10	
22	0.07	
23	1.09	
24	0.95	(0.25)
25	0.27	
26	0.62	(2.79)
27	0.02	
28	1.45	
29	1.35	
30	0.42	
31	0.26	
32	0.23	(1.93)
33	1.43	
36	0.33	
37	2.23	
38	0.75	
39	1.98	
40	0.05	
43		(1.65)
44	0.20	(0.83)
45		(0.70)
46		(0.60)
47	3.09	(1.60)
48	0.08	(3.32)
49	0.09	
50	0.33	(0.96)
51	0.40	
52		(1.70)
54		(0.16)
55		(0.10)
56	2.56	(1.17)
57	1.10	(0.53)
58		(0.38)
60		(1.21)
61	2.65	
62	1.65	
63	1.25	
64	1.00	
66		(0.08)
68	0.32	(0.03)
70	0.19	
72	0.37	
73		(1.05)
74	0.24	
75	0.34	(0.22)
79	0.24	
80		(0.03)
81	0.07	
85		(0.74)
86		(1.24)
87		(1.16)
88		(0.84)
89		(1.22)
90		(1.17)
93		(2.68)
94		(0.97)
95		(1.34)
96		(0.51)
97		(0.26)
98		(0.66)
99		(0.57)
101		(1.25)
102		(0.55)
103		(0.38)
104		(1.25)
105		(0.88)
106		(0.24)
107		(0.61)
108		(0.37)
TOTAL	41.10	43.88

MILEAGE SUMMARY

CLASS 2	LENGTH IN MILES
TH-1	3.940
TH-2	6.140
TH-3	3.950
TH-4	1.610
TOTAL CLASS 2	15.640
TOTAL CLASS 3	41.10
TOTAL TOWN	56.740

STATE HIGHWAY	LENGTH IN MILES
VT-12	9.615
TOTAL STATE HIGHWAY	9.615
TOTAL STATE	9.615

TOTAL, TRAVELED HIGHWAYS, FEB. 10, 2022: 66.355
(Excludes Class 4 and Legal Trail Mileage)

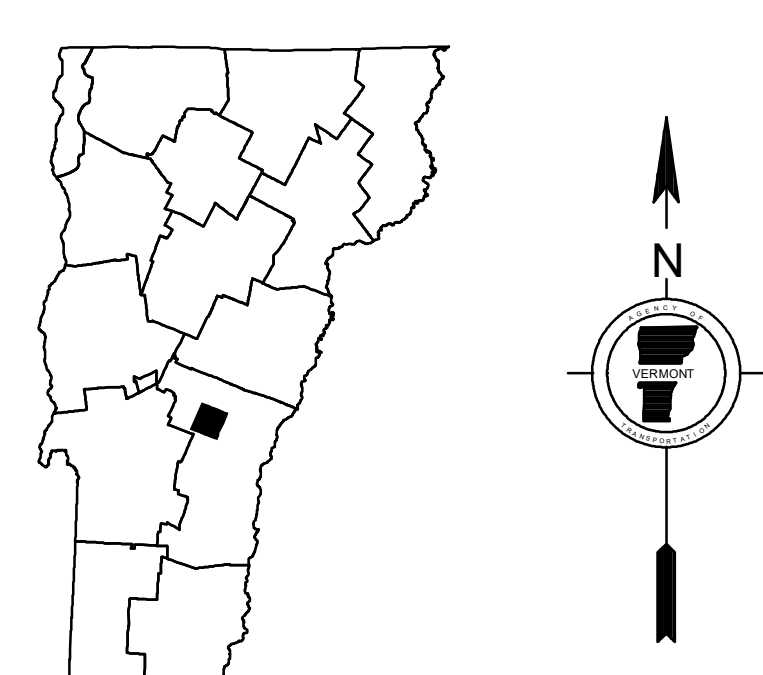
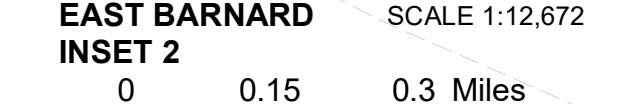
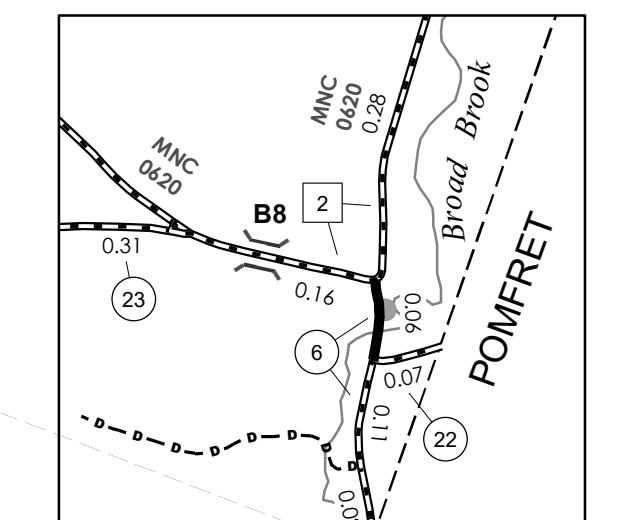
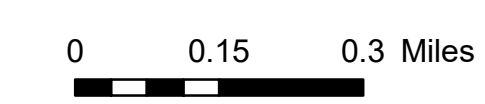
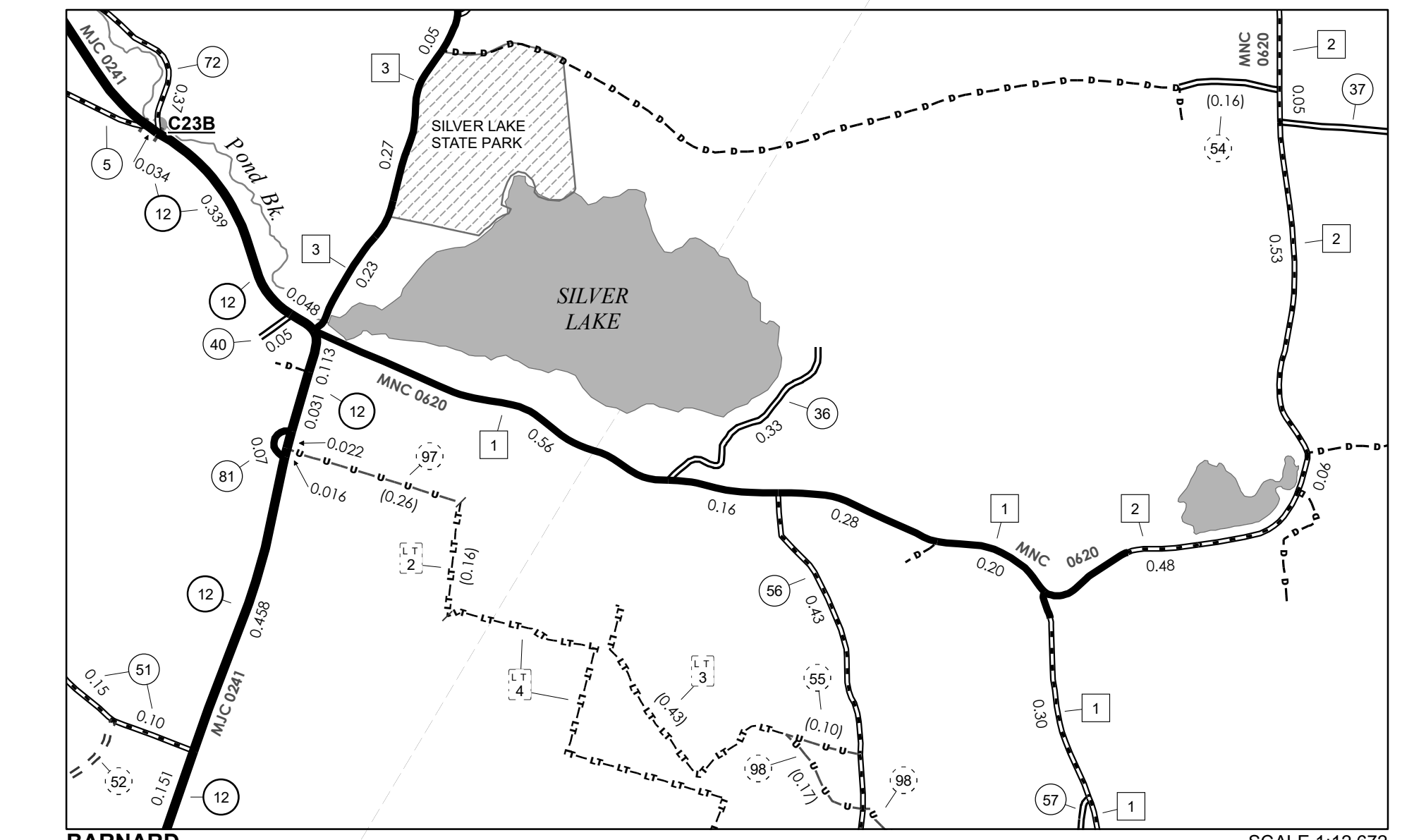
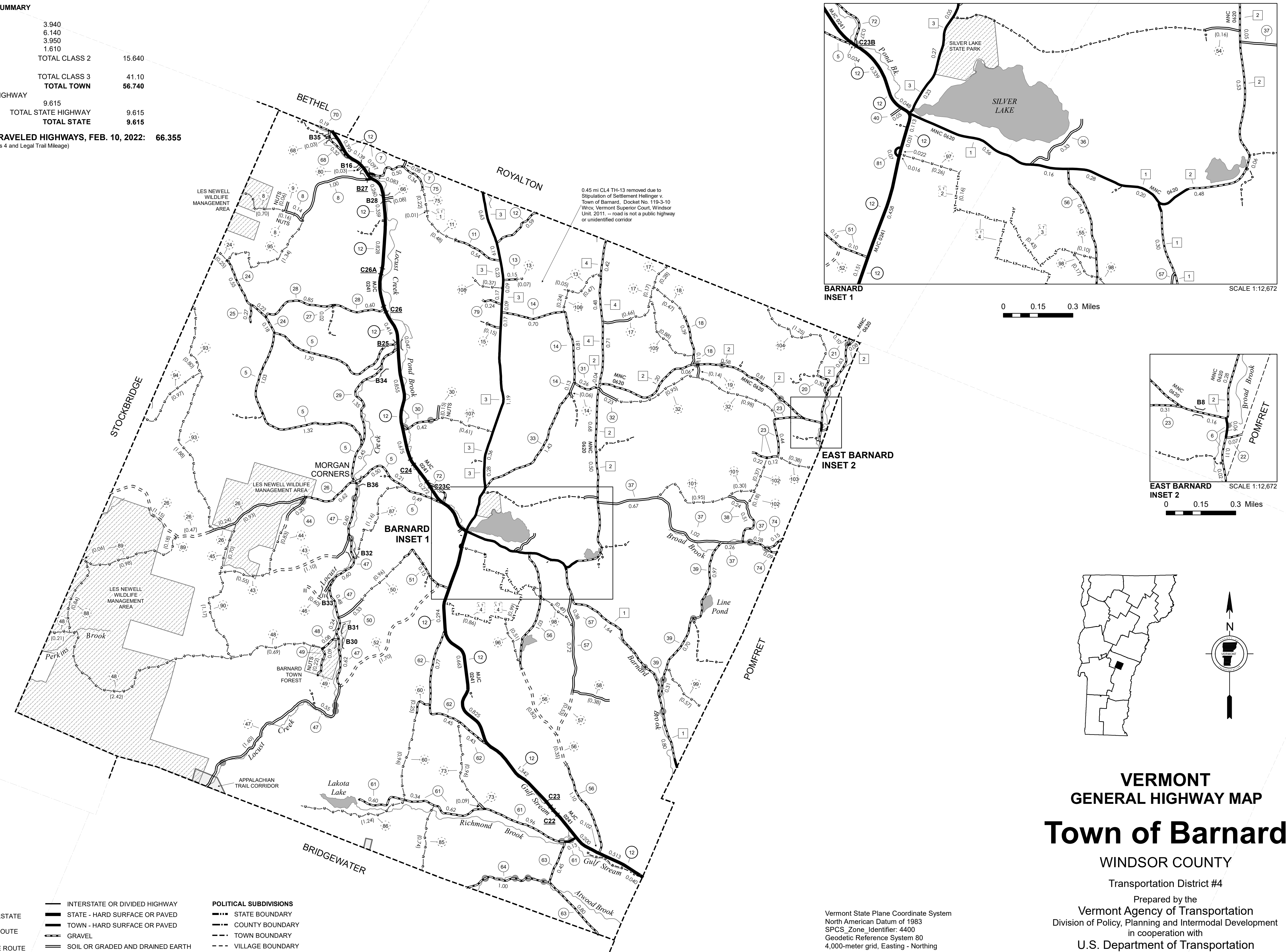
TOWN HWY. No.	LENGTH IN MILES "NOT UP TO STANDARD"
8	(0.16)
9	(0.06)
30	(0.15)
49	(0.22)
TOTAL	0.59

* The sections of the town highways listed above are legally Class 3, but have been deemed "Not Up To Standard" and are functionally Class 4 Town Highways

LEGAL TRAIL No.	LENGTH IN MILES LEGAL TRAIL
1	(0.01)
2	(0.16)
3	(0.43)
4	(1.85)
TOTAL	2.45

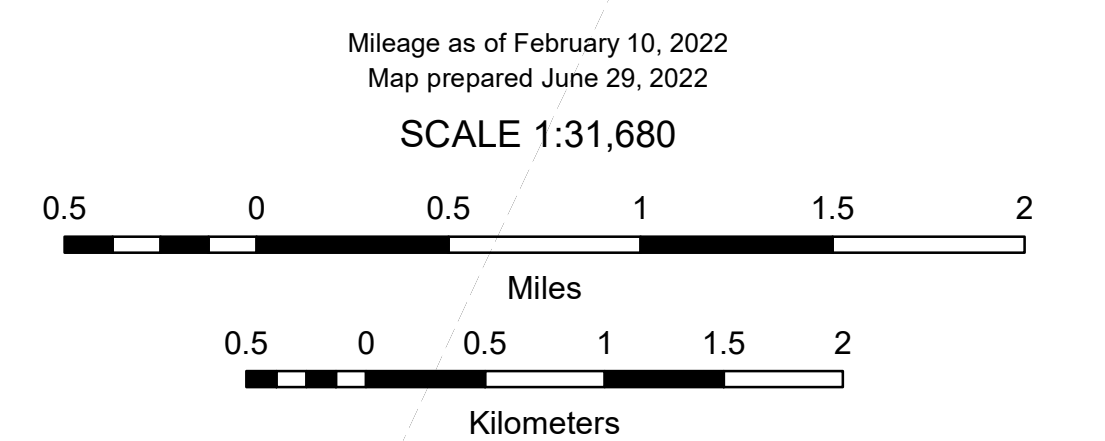
- HIGHWAYS**
- INTERSTATE
 - U.S. ROUTE
 - STATE ROUTE
 - CLASS 1
 - CLASS 2
 - CLASS 3
 - CLASS 4
 - LEGAL TRAIL
 - PARK AND RIDE
- INTERSTATE OR DIVIDED HIGHWAY
STATE - HARD SURFACE OR PAVED
TOWN - HARD SURFACE OR PAVED
GRAVEL
SOIL OR GRADED AND DRAINED EARTH
UNIMPROVED OR PRIMITIVE
IMPASSABLE OR UNTRAVELED
LEGAL TRAIL
DISCONTINUED
HIGHWAY CLASS CHANGE
RAILROAD
INACTIVE RAILROAD
PUBLIC LAND - NATIONAL FOREST
PUBLIC LAND - STATE/MUNICIPAL
NATIONAL FOREST ROAD
UNITED STATES GOV. HWY.

- POLITICAL SUBDIVISIONS**
- STATE BOUNDARY
 - COUNTY BOUNDARY
 - TOWN BOUNDARY
 - VILLAGE BOUNDARY
 - URBAN COMPACT BOUNDARY
 - WATER BODY
 - STREAM OR BROOK
- BRIDGE OR CULVERT**
- BRIDGE OR CULVERT > 20'
 - BRIDGE OR CULVERT 6' - 20'
 - BIKE PATH STRUCTURE
 - VT CULVERTS BRIDGE
 - VT CULVERTS CULVERT > 6'
 - STATE BRIDGE OR CULVERT IDENTIFIER
 - TOWN BRIDGE OR CULVERT IDENTIFIER
- FEDERAL CLASSIFICATION IDENTIFIER**
- MA MINOR ARTERIAL
 - MJC MAJOR COLLECTOR
 - MNC MINOR COLLECTOR
 - PA PRINCIPAL ARTERIAL



VERMONT GENERAL HIGHWAY MAP
Town of Barnard
WINDSOR COUNTY
Transportation District #4

Prepared by the
Vermont Agency of Transportation
Division of Policy, Planning and Intermodal Development
in cooperation with
U.S. Department of Transportation
Federal Highway Administration



DISCLAIMER:
The untraveled highways (laid-out town highways), discontinued highways, and legal trails hereon are those of which the Agency of Transportation has record; others may exist.

Highway and bridge data by the Agency of Transportation. Town short structures drawn from the VT CULVERTS (formerly VOBCIT) online database. All other data from the Vermont Open Geodata Portal. Only named streams shown.