

TOWN HWY. No.	CLASS 3	CLASS 4
5	5.70	
6	0.19	
7	0.58	
8	1.14	(0.70)
11	0.54	(0.48)
12	0.59	
13	0.15	(0.59)
14	1.64	(0.06)
15		(0.15)
17		(1.11)
18	0.50	(0.47)
19		(0.14)
20	0.30	
21	0.10	
22	0.07	
23	1.09	
24	0.95	(0.25)
25	0.27	
26	1.83	(1.58)
27	0.30	
28	1.45	
29	1.35	
30	0.42	
31	0.26	
32	0.23	(1.93)
33	1.43	
36	0.33	
37	2.23	
38	0.75	
39	1.98	
40	0.05	
43		(1.65)
44	0.20	(0.83)
45		(0.70)
46		(0.60)
47	3.09	(1.60)
48	0.08	(3.32)
49	0.09	
50	0.33	(0.96)
51	0.40	
52		(1.70)
54		(0.16)
55		(0.10)
56	2.56	(1.17)
57	1.10	(0.53)
58		(0.38)
60		(1.21)
61	2.65	
62	1.65	
63	1.25	
64	1.00	
66		(0.08)
68	0.32	(0.43)
70	0.19	
72	0.37	
73		(1.05)
74	0.24	
75	0.34	(0.22)
79	0.24	
80		(0.03)
81	0.07	
85		(0.74)
86		(1.24)
87		(1.16)
88		(0.84)
89		(1.22)
90		(1.12)
91		(0.67)
93		(2.68)
94		(0.97)
95		(1.34)
96		(0.51)
97		(0.26)
98		(0.66)
99		(0.57)
101		(1.25)
102		(0.55)
103		(0.38)
104		(1.25)
105		(0.88)
106		(0.24)
107		(0.61)
108		(0.37)
TOTAL	42.59	43.69

MILEAGE SUMMARY

CLASS 2	CLASS 3	TOTAL CLASS 2	TOTAL CLASS 3	TOTAL TOWN
TH-1		3.940		
TH-2		6.140		
TH-3		3.950		
TH-4		1.610		
		TOTAL CLASS 2	15.640	
			TOTAL CLASS 3	42.59
			TOTAL TOWN	58.230
STATE HIGHWAY				
VT-12		9.615		
		TOTAL STATE HIGHWAY	9.615	
			TOTAL STATE	9.615

TOTAL, TRAVELED HIGHWAYS, FEB. 10, 2013: 67.845
(Excludes Class 4, Legal Trail, and Unidentified Corridor Mileage)

TOWN HWY. No.	LENGTH IN MILES "NOT UP TO STANDARD"
8	(0.16)
9	(0.06)
30	(0.15)
49	(0.22)
TOTAL	0.59

* The sections of the town highways listed above are legally Class 3, but have been deemed "Not Up To Standard" and are functionally Class 4 Town Highways

LEGAL TRAIL No.	LENGTH IN MILES LEGAL TRAIL
1	(0.01)
2	(0.16)
3	(0.43)
4	(1.85)
TOTAL	2.45

DISCLAIMER:
The untraveled highways (laid-out town highways), discontinued highways, and legal trails hereon are those of which the Agency of Transportation has record; others may exist.
Highway and bridge data by the Agency of Transportation. All other data from the Vermont Center for Geographic Information. Only named streams are shown.

HIGHWAYS

- INTERSTATE
- U.S. ROUTE
- STATE ROUTE
- CLASS 1
- CLASS 2
- CLASS 3
- CLASS 4
- LEGAL TRAIL

INTERSTATE OR DIVIDED HIGHWAY

- STATE - HARD SURFACE OR PAVED
- TOWN - HARD SURFACE OR PAVED
- GRAVEL
- SOIL OR GRADED AND DRAINED EARTH
- UNIMPROVED OR PRIMITIVE
- IMPASSABLE OR UNTRAVELED
- LEGAL TRAIL
- DISCONTINUED
- HIGHWAY CLASS CHANGE
- RAILROAD
- INACTIVE RAILROAD
- NFR NATIONAL FOREST ROAD
- SFH STATE FOREST HIGHWAY
- P PARK AND RIDE

PUBLIC LAND - GREEN MOUNTAIN NATIONAL FOREST

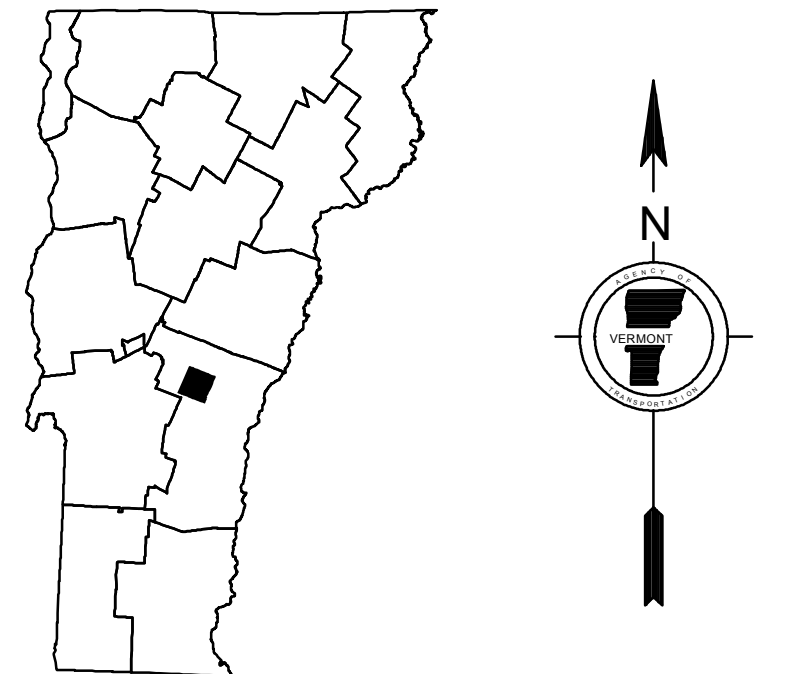
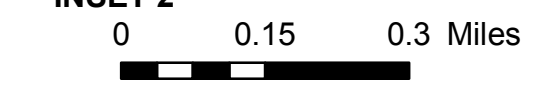
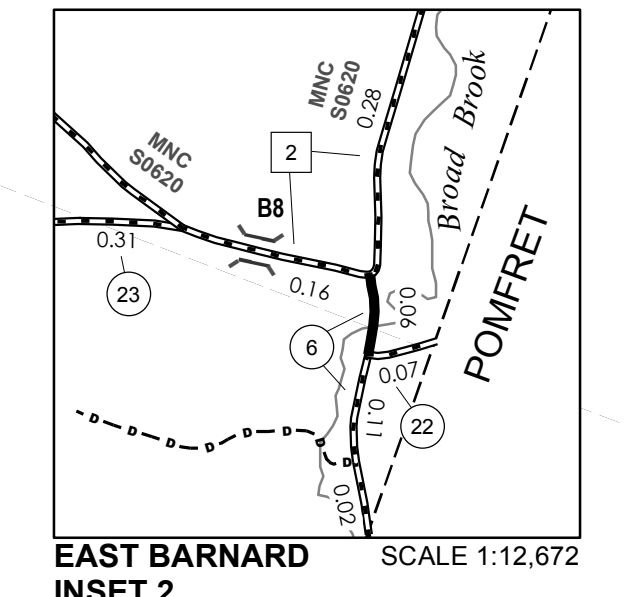
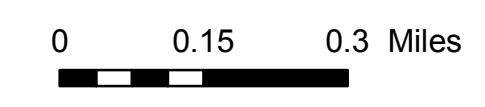
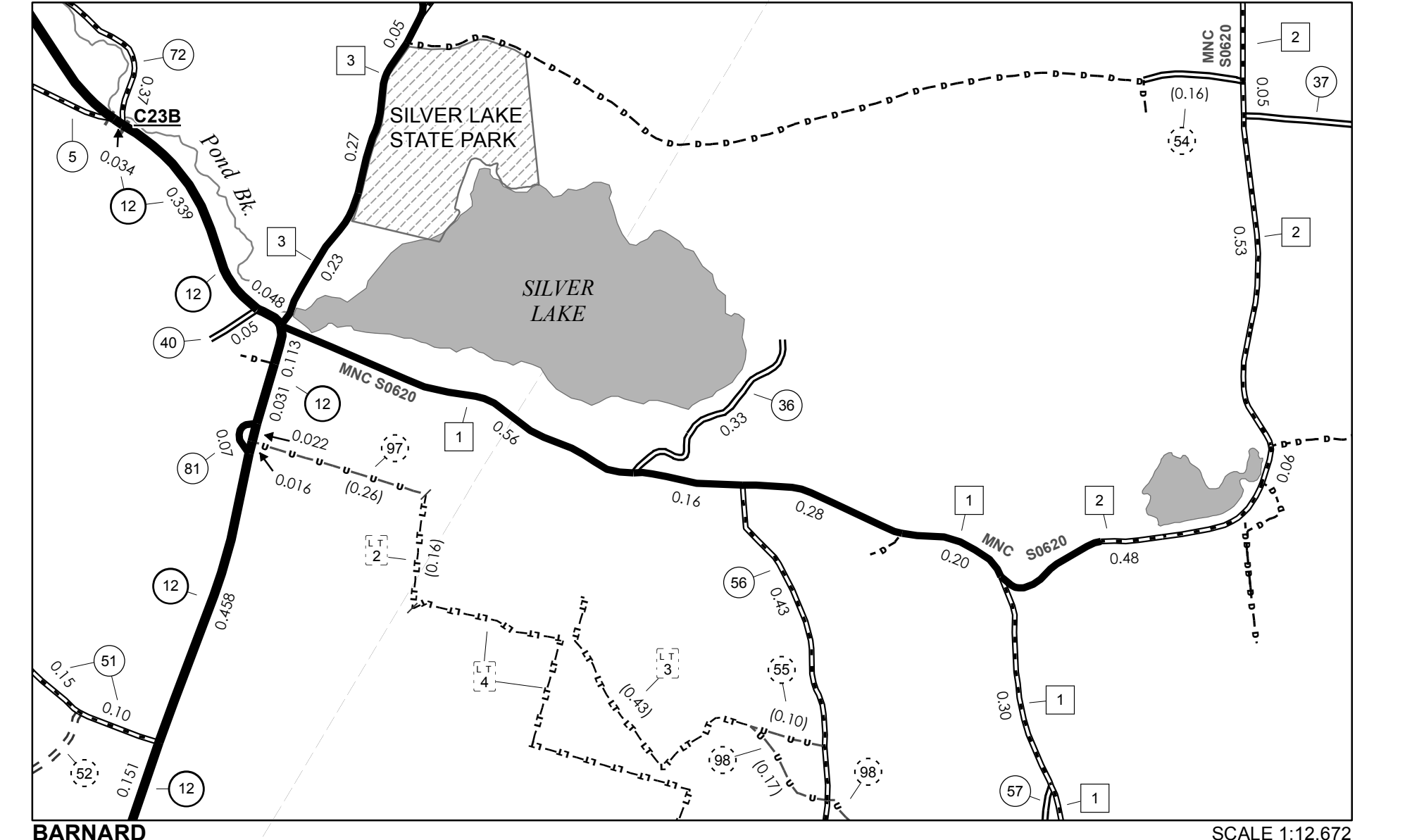
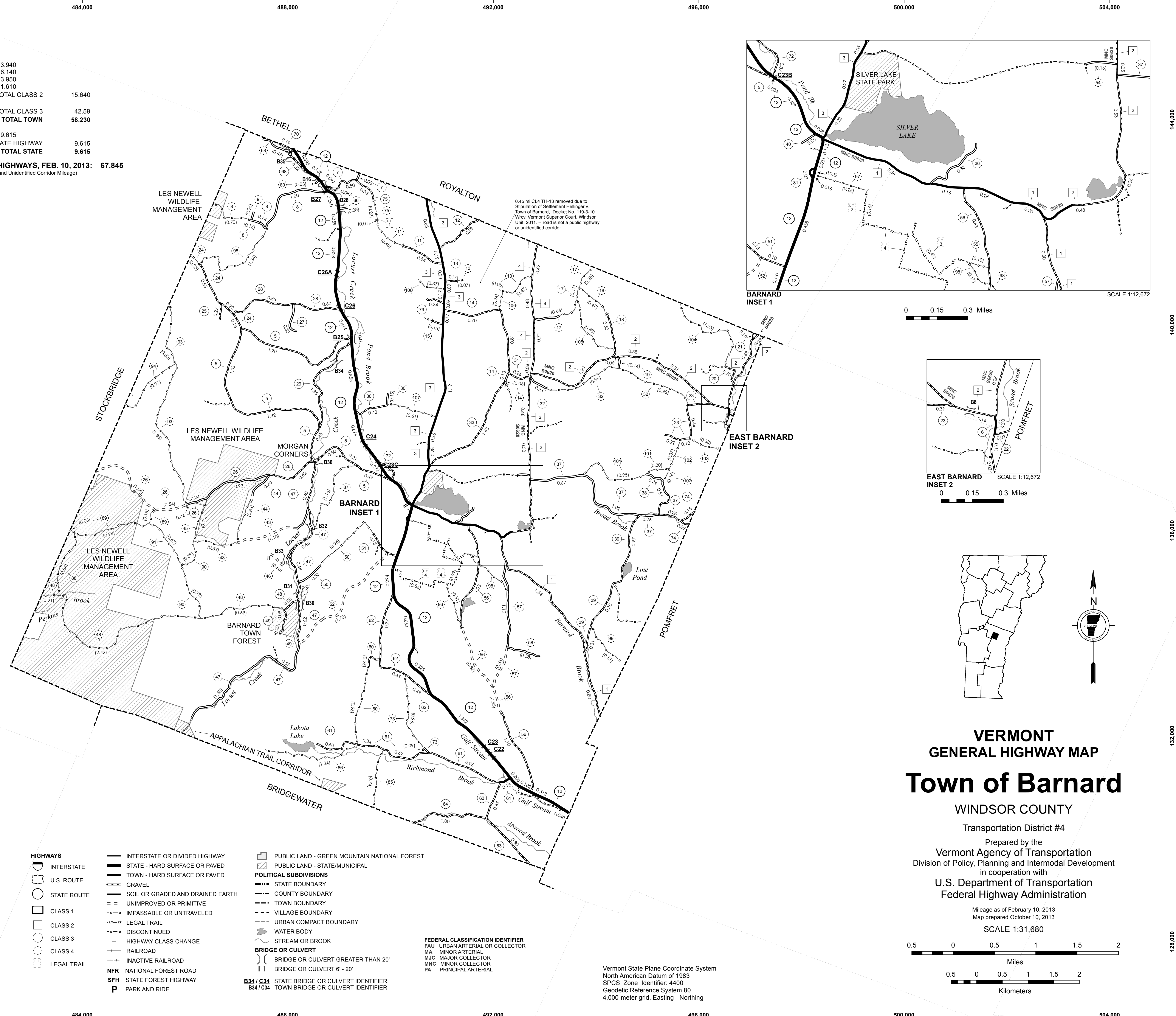
PUBLIC LAND - STATE/MUNICIPAL

POLITICAL SUBDIVISIONS

- STATE BOUNDARY
- COUNTY BOUNDARY
- TOWN BOUNDARY
- VILLAGE BOUNDARY
- URBAN COMPACT BOUNDARY
- WATER BODY
- STREAM OR BROOK
- BRIDGE OR CULVERT
- BRIDGE OR CULVERT GREATER THAN 20'
- BRIDGE OR CULVERT 6' - 20'
- STATE BRIDGE OR CULVERT IDENTIFIER
- TOWN BRIDGE OR CULVERT IDENTIFIER

FEDERAL CLASSIFICATION IDENTIFIER

- FAU URBAN ARTERIAL OR COLLECTOR
- MA MINOR ARTERIAL
- MJC MAJOR COLLECTOR
- MNC MINOR COLLECTOR
- PA PRINCIPAL ARTERIAL



VERMONT GENERAL HIGHWAY MAP

Town of Barnard

WINDSOR COUNTY

Transportation District #4

Prepared by the
Vermont Agency of Transportation
Division of Policy, Planning and Intermodal Development
in cooperation with
U.S. Department of Transportation
Federal Highway Administration

Mileage as of February 10, 2013
Map prepared October 10, 2013

SCALE 1:31,680

Vermont State Plane Coordinate System
North American Datum of 1983
SPCS_Zone_Identifier: 4400
Geodetic Reference System 80
4,000-meter grid, Easting - Northing