

- HIGHWAYS**
- INTERSTATE
  - U.S. ROUTE
  - STATE ROUTE
  - CLASS 1
  - CLASS 2
  - CLASS 3
  - CLASS 4
  - LEGAL TRAIL
  - INTERSTATE OR DIVIDED HIGHWAY
  - STATE - HARD SURFACE OR PAVED
  - TOWN - HARD SURFACE OR PAVED
  - GRAVEL
  - SOIL OR GRADED AND DRAINED EARTH
  - UNIMPROVED OR PRIMITIVE
  - IMPASSABLE OR UNTRAVELED
  - LEGAL TRAIL
  - DISCONTINUED
  - HIGHWAY CLASS CHANGE
  - RAILROAD
  - INACTIVE RAILROAD
  - PUBLIC LAND
- POLITICAL SUBDIVISIONS**
- STATE BOUNDARY
  - COUNTY BOUNDARY
  - TOWN BOUNDARY
  - VILLAGE BOUNDARY
  - URBAN COMPACT BOUNDARY
  - WATER BODY
  - STREAM OR BROOK
- BRIDGE OR CULVERT**
- BRIDGE OR CULVERT GREATER THAN 20'
  - BRIDGE OR CULVERT 6' - 20'
  - TOWN SHORT STRUCTURE

B34 / C34 STATE BRIDGE OR CULVERT IDENTIFIER  
 B34 / C34 TOWN BRIDGE OR CULVERT IDENTIFIER

**FEDERAL CLASSIFICATION IDENTIFIER**

- FAU URBAN ARTERIAL OR COLLECTOR
- MA MINOR ARTERIAL
- MJC MAJOR COLLECTOR
- MNC MINOR COLLECTOR
- PA PRINCIPAL ARTERIAL

**MILEAGE SUMMARY**

CLASS 2	4.830		
TH-1	5.100		
TH-2			
<b>TOTAL CLASS 2</b>	<b>9.930</b>		
CLASS 3			
<b>TOTAL CLASS 3</b>	<b>30.640</b>		
<b>TOTAL TOWN</b>	<b>40.570</b>		
STATE HIGHWAY			
VT-11	3.678		
VT-100	0.208		
<b>TOTAL STATE HIGHWAY</b>	<b>3.886</b>		
<b>TOTAL STATE</b>	<b>3.886</b>		

**TOTAL, TRAVELED HIGHWAYS, FEB. 10, 2011: 44.456**  
 (Excludes Class 4, Legal Trail, and Unidentified Corridor Mileage)

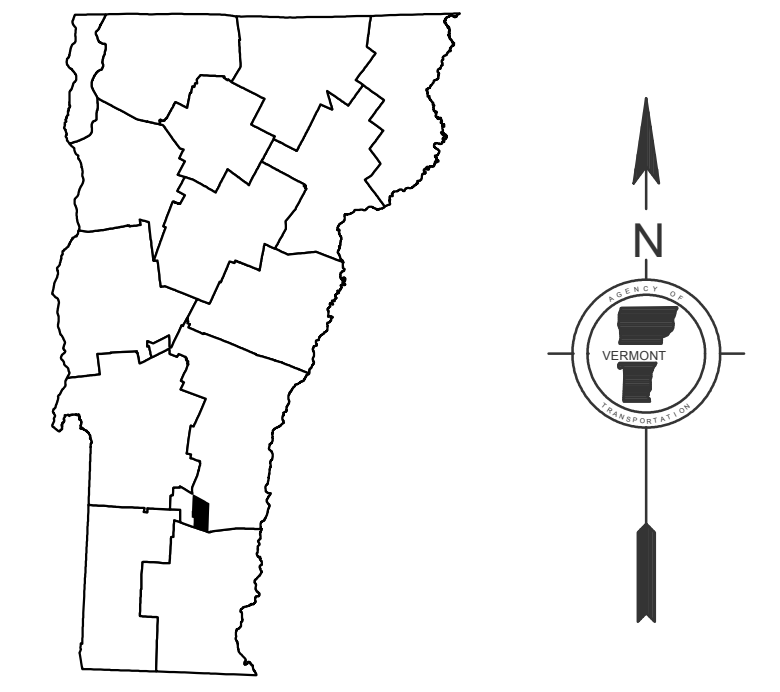
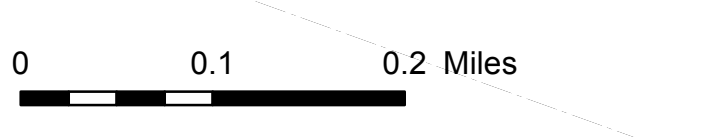
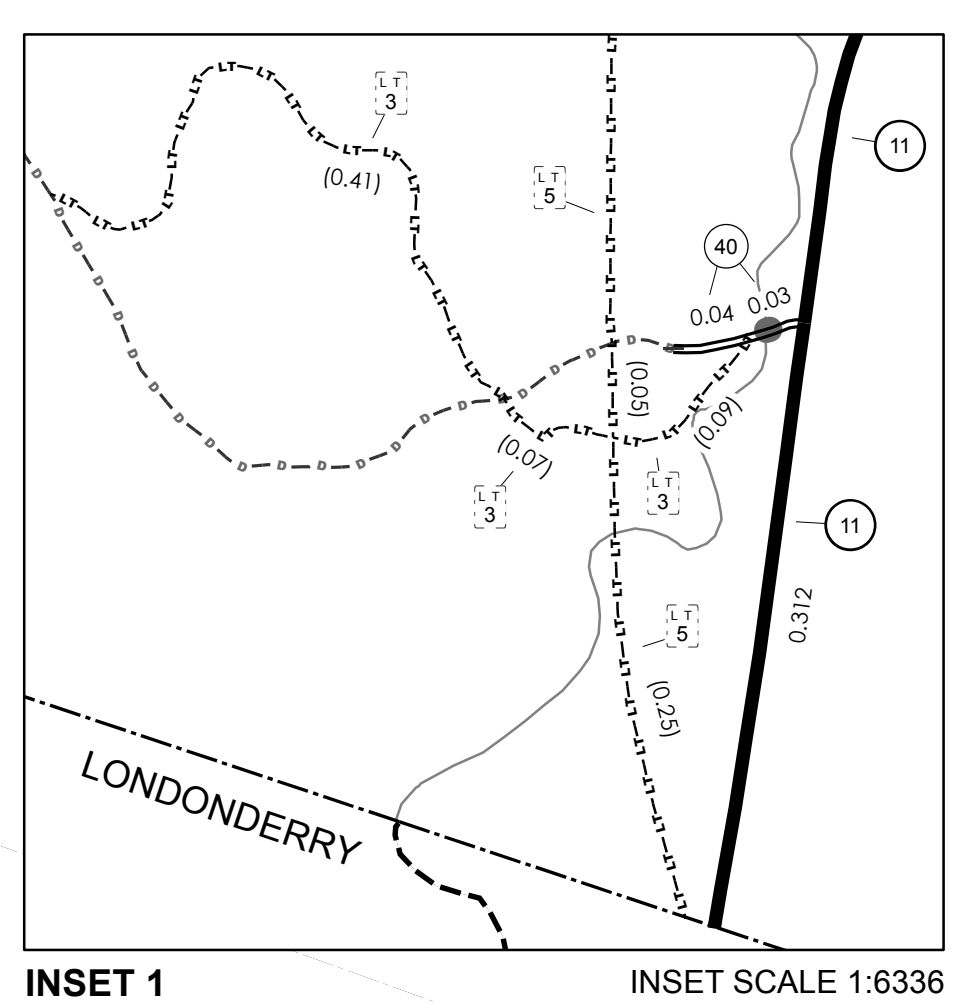
TOWN HWY. NO.	LENGTH IN MILES CLASS 3	LENGTH IN MILES CLASS 4		
4	1.00		44	(0.35)
5	0.45		45	0.12 (0.32)
6	0.24		46	
7	0.65		47	0.50
8	0.40		48	0.26
9	1.07	(0.15)	49	2.02
10	0.43	(0.04)	50	0.26
11		(0.40)	51	0.23
12	3.30		52	0.07
13	0.86		54	0.42
14	0.48	(0.69)	55	0.09
15	0.50	(0.21)	56	0.22
16	0.15		57	0.17
17	0.57		58	0.10
18		(1.26)	59	0.17
19	0.35		60	0.09
20		(0.05)	61	(0.14)
21		(0.09)	62	(0.29)
22	0.25		63	(0.25)
23	0.60		64	(1.80)
24	2.27		65	(0.13)
25	0.14		66	(0.80)
26	0.47	(0.08)	67	(0.43)
27	1.40		68	(0.89)
28	0.14		69	(0.76)
29	0.10		70	(0.14)
30	2.12	(0.05)	71	(0.50)
31	0.08	(0.07)	72	(0.60)
32	0.35		73	(0.27)
33	1.90		74	(1.05)
34	0.60		75	(0.20)
35	2.28		76	(0.71)
36	1.18	(0.80)	77	(0.69)
37	0.07		78	(0.55)
38	0.68		79	(0.19)
39	0.07		80	(0.48)
40	0.08		81	(0.90)
41	0.69	(0.08)	82	(1.27)
43			85	
<b>TOTAL</b>	<b>30.64</b>	<b>18.02</b>		

\* This portion of town highway is Class 3, but is functionally Class 4

LEGAL TRAIL NO.	LENGTH IN MILES LEGAL TRAIL
1	(0.95)
2	(0.57)
3	(0.57)
4	(2.38)
5	(0.99)
<b>TOTAL</b>	<b>5.46</b>

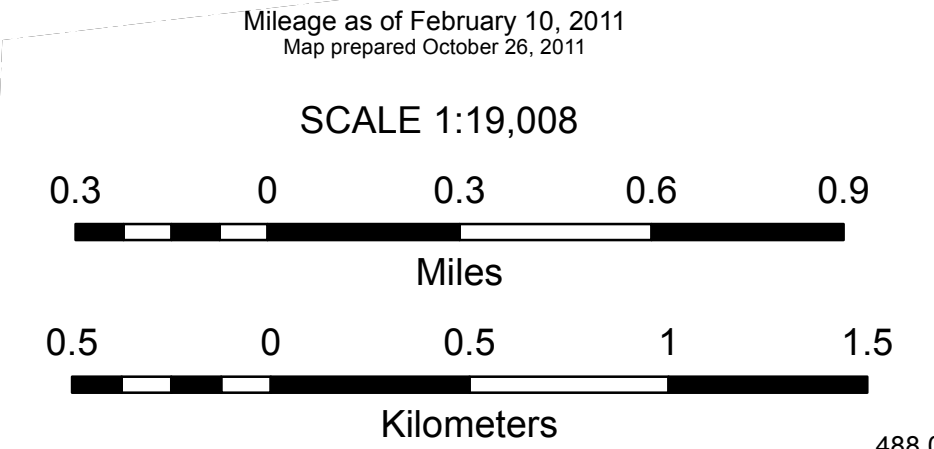
Selectboard Note:  
 In March and May 2011, the Town of Andover Selectboard reclassified the following Class 4 town highways to Legal Trails and prohibited the use of motorized vehicles on them:

TH-14	TH-66	TH-72	TH-77
TH-61	TH-67	TH-73	TH-79
TH-62	TH-68	TH-74	TH-81
TH-63	TH-69	TH-75	TH-84
TH-64	TH-70	TH-76	TH-85
TH-65	TH-71		



**VERMONT**  
**GENERAL HIGHWAY MAP**  
**Town of Andover**  
 WINDSOR COUNTY

Transportation District #2  
 Prepared by the  
 Vermont Agency of Transportation  
 Division of Policy, Planning & Intermodal Development  
 in cooperation with  
 U.S. Department of Transportation  
 Federal Highway Administration



**STRUCTURES - SURFACE WATER NOTE:**

**STRUCTURES:**  
 Town short structures (bridges or culverts from 6-feet to less than 20-feet) are drawn from the Vermont Online Bridge & Culvert Inventory Tool (VOBCIT) database.  
 NOTE: Town shorts are not consistently tagged within VOBCIT.

**SURFACE WATERS:**  
 The surface waters are from the Vermont Hydrological Dataset (VHD). Only the named streams are shown.

**DISCLAIMER:**

The untraveled highways (laid-out town highways), discontinued highways, and legal trails shown herein are those of which the Agency of Transportation has record; others may exist.

Highway and bridge data by the Agency of Transportation. All other data from the Vermont Center for Geographic Information.

Vermont State Plane Coordinate System  
 North American Datum of 1983  
 SPCS\_Zone\_Identifier: 4400  
 Geodetic Reference System 80  
 4,000-meter grid, Easting - Northing