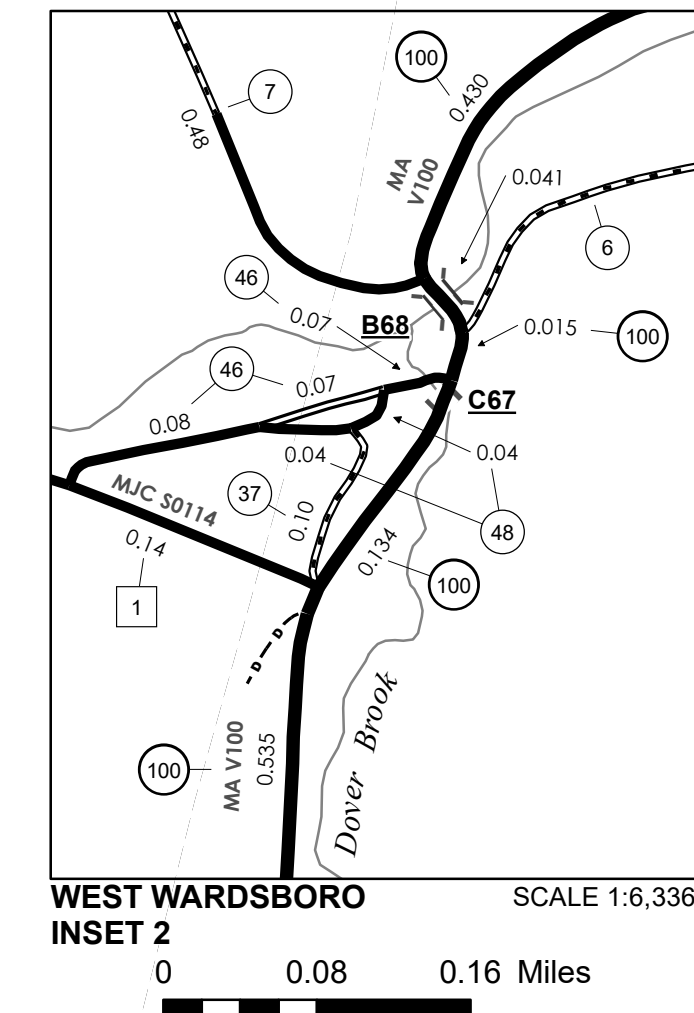
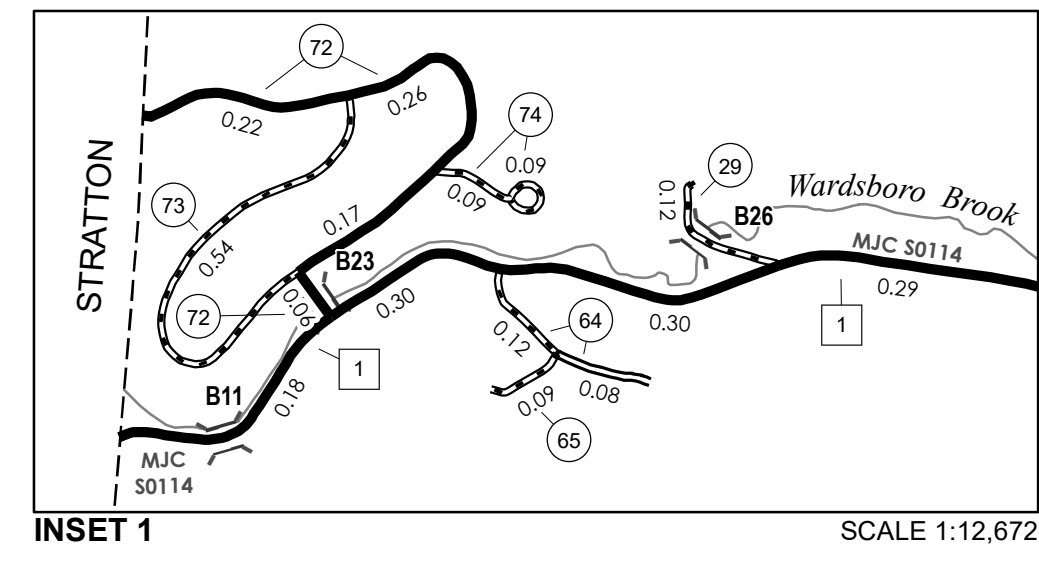
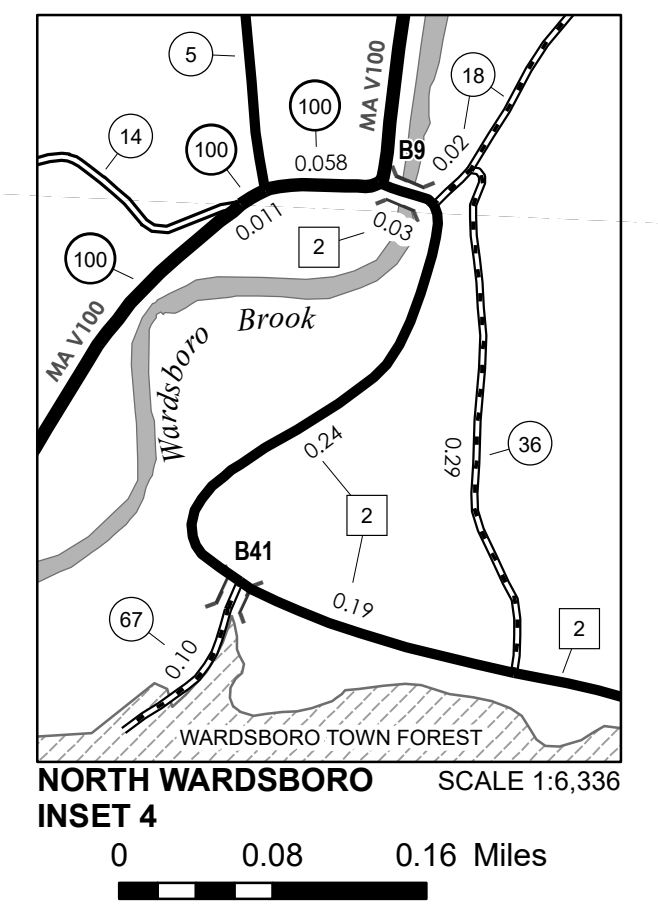
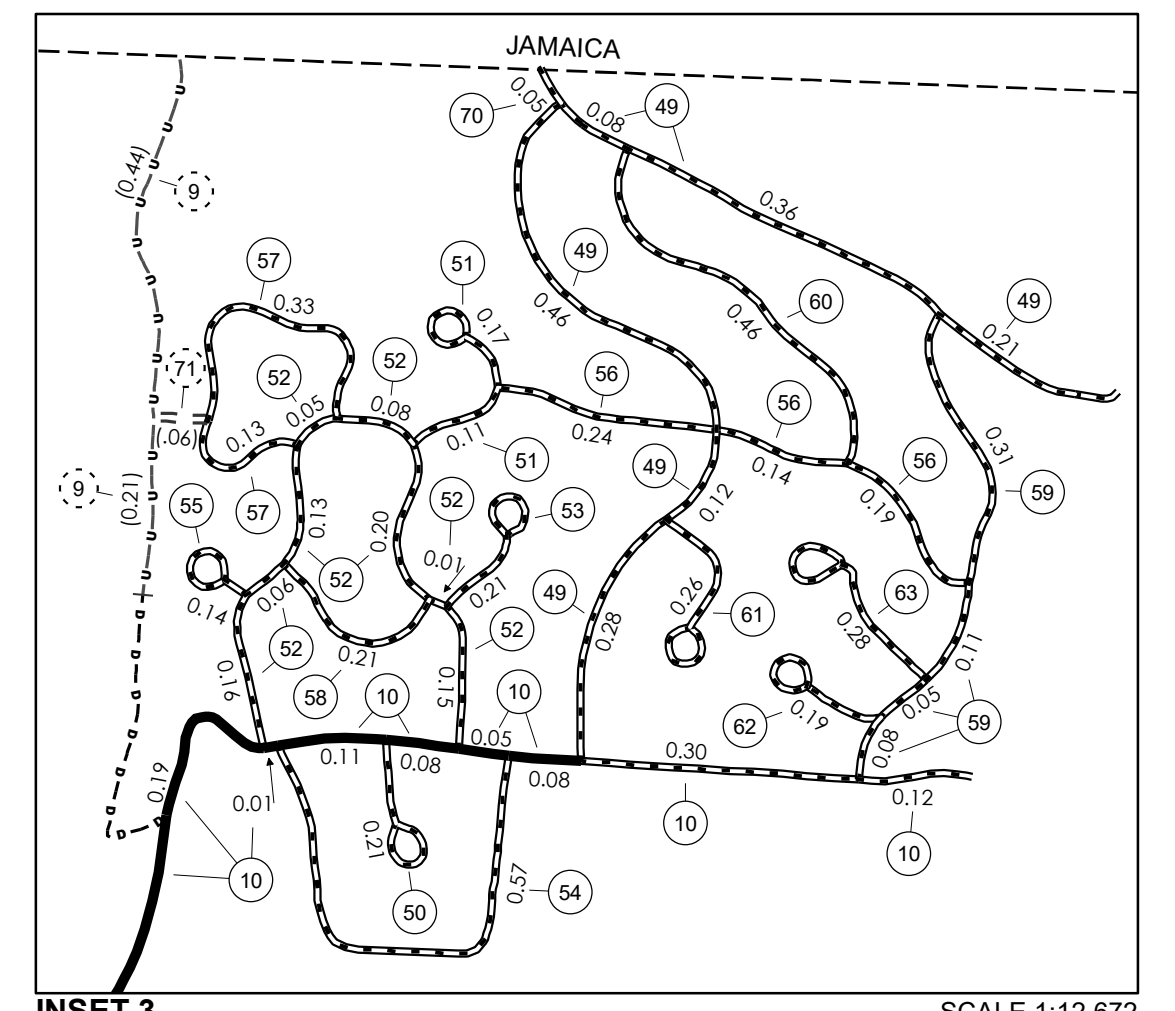
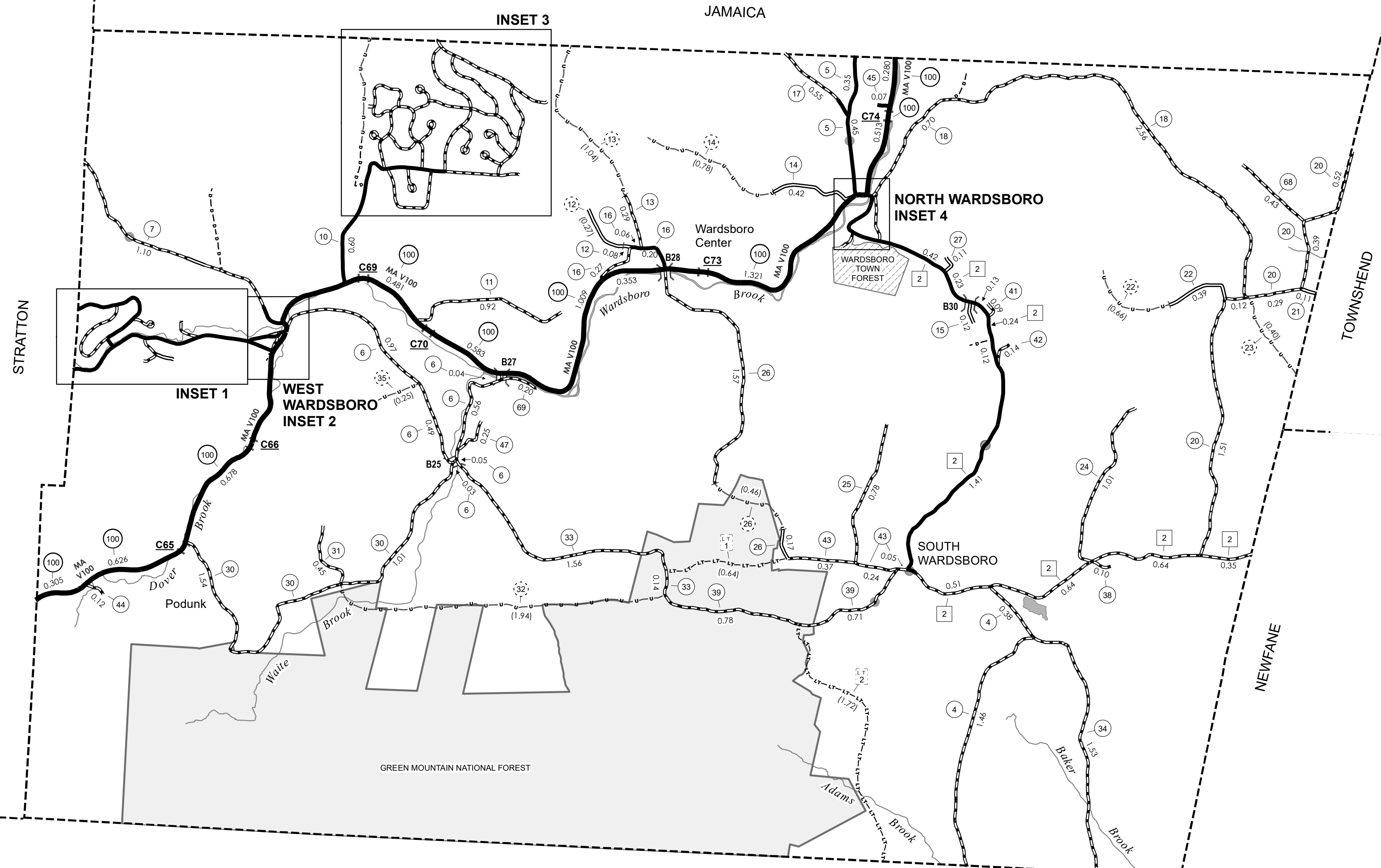


TOWN HWY. No.	LENGTH IN MILES CLASS 3	LENGTH IN MILES CLASS 4	TOWN HWY. No.	LENGTH IN MILES CLASS 3	LENGTH IN MILES CLASS 4
4	1.84		41	0.09	
5	0.80		42	0.14	
6	2.14		43	0.66	
7	1.58		44	0.12	
9		(0.65)	45	0.07	
10	1.54		46	0.22	
11	0.92		47	0.25	
12	0.08	(0.27)	48	0.08	
13	0.29	(1.04)	49	1.51	
14	0.42	(0.78)	50	0.21	
15	0.12		51	0.28	
16	0.53		52	0.84	
17	0.55		53	0.21	
18	3.28		54	0.57	
20	2.83		55	0.14	
21	0.11		56	0.57	
22	0.39	(0.66)	57	0.46	
23		(0.40)	58	0.21	
24	1.01		59	0.55	
25	0.78		60	0.46	
26	1.74	(0.46)	61	0.26	
27	0.11		62	0.19	
29	0.12		63	0.28	
30	2.55		64	0.20	
31	0.45		65	0.09	
32		(1.94)	67	0.10	
33	1.70		68	0.43	
34	1.53		69	0.20	
35		(0.25)	70	0.05	
36	0.29		71		(0.06)
37	0.10		72	0.71	
38	0.10		73	0.54	
39	1.49		74	0.18	
<b>TOTAL</b>			<b>40.26</b>	<b>6.51</b>	

LEGAL TRAIL No.	LENGTH IN MILES LEGAL TRAIL
1	(0.64)
2	(1.72)
<b>TOTAL</b>	<b>2.36</b>

MILEAGE SUMMARY		
CLASS 2		
TH-1	1.210	
TH-2	5.150	
<b>TOTAL CLASS 2</b>	<b>6.360</b>	
CLASS 3		
<b>TOTAL CLASS 3</b>	<b>40.26</b>	
<b>TOTAL TOWN</b>	<b>46.620</b>	
STATE HIGHWAY		
VT-100	7.373	
<b>TOTAL STATE HIGHWAY</b>	<b>7.373</b>	
<b>TOTAL STATE</b>	<b>7.373</b>	

**TOTAL, TRAVELED HIGHWAYS, FEB. 10, 2019: 53.993**  
(Excludes Class 4 and Legal Trail Mileage)



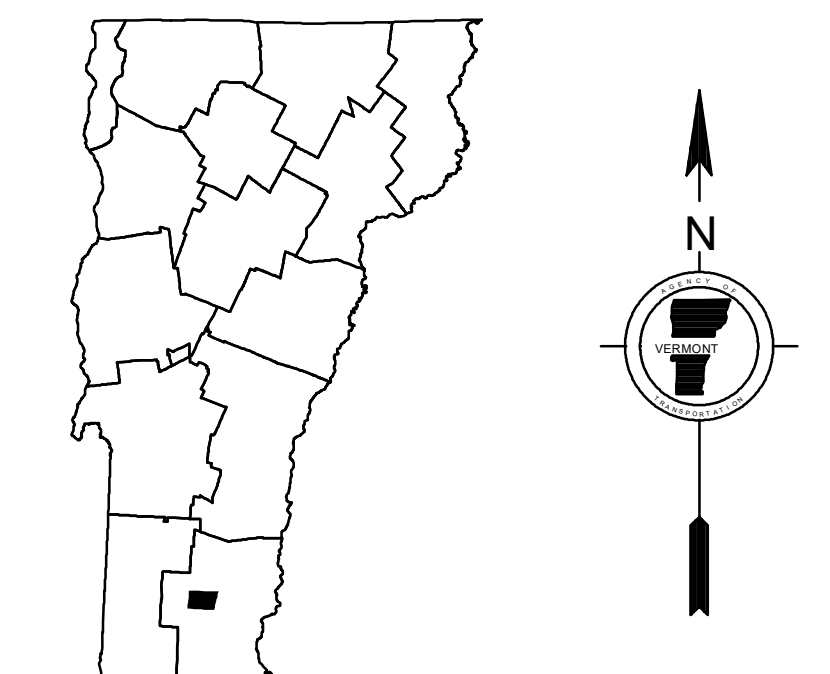
- HIGHWAYS**
  - INTERSTATE
  - U.S. ROUTE
  - STATE ROUTE
  - CLASS 1
  - CLASS 2
  - CLASS 3
  - CLASS 4
  - LEGAL TRAIL
  - PARK AND RIDE
- INTERSTATE OR DIVIDED HIGHWAY
- STATE - HARD SURFACE OR PAVED
- TOWN - HARD SURFACE OR PAVED
- GRAVEL
- SOIL OR GRADED AND DRAINED EARTH
- UNIMPROVED OR PRIMITIVE
- IMPASSABLE OR UNTRAVELED
- LEGAL TRAIL
- DISCONTINUED
- HIGHWAY CLASS CHANGE
- RAILROAD
- INACTIVE RAILROAD
- PUBLIC LAND - NATIONAL FOREST
- PUBLIC LAND - STATE/MUNICIPAL
- NATIONAL FOREST ROAD
- SFH STATE FOREST HIGHWAY

- POLITICAL SUBDIVISIONS**
  - STATE BOUNDARY
  - COUNTY BOUNDARY
  - TOWN BOUNDARY
  - VILLAGE BOUNDARY
  - URBAN COMPACT BOUNDARY
  - WATER BODY
  - STREAM OR BROOK
- BRIDGE OR CULVERT**
  - BRIDGE OR CULVERT > 20'
  - BRIDGE OR CULVERT 6' - 20'
  - BIKE PATH STRUCTURE
  - VT CULVERTS BRIDGE
  - VT CULVERTS CULVERT > 6'
  - STATE BRIDGE OR CULVERT IDENTIFIER
  - TOWN BRIDGE OR CULVERT IDENTIFIER
- FEDERAL CLASSIFICATION IDENTIFIER**
  - MA MINOR ARTERIAL
  - MJC MAJOR COLLECTOR
  - MNC MINOR COLLECTOR
  - PA PRINCIPAL ARTERIAL

**DISCLAIMER:**  
 The untraveled highways (laid-out town highways), discontinued highways, and legal trails hereon are those of which the Agency of Transportation has record; others may exist.

Highway and bridge data by the Agency of Transportation.  
 Town short structures drawn from the VTCULVERTS (formerly VOBCT) online database. All other data from the Vermont Open Geodata Portal. Only named streams shown.

Vermont State Plane Coordinate System  
 North American Datum of 1983  
 SPCS\_Zone\_Identifier: 4400  
 Geodetic Reference System 80  
 4,000-meter grid, Easting - Northing



**VERMONT GENERAL HIGHWAY MAP**  
**Town of Wardsboro**  
 WINDHAM COUNTY  
 Transportation District #2

Prepared by the  
 Vermont Agency of Transportation  
 Division of Policy, Planning and Intermodal Development  
 in cooperation with  
 U.S. Department of Transportation  
 Federal Highway Administration

