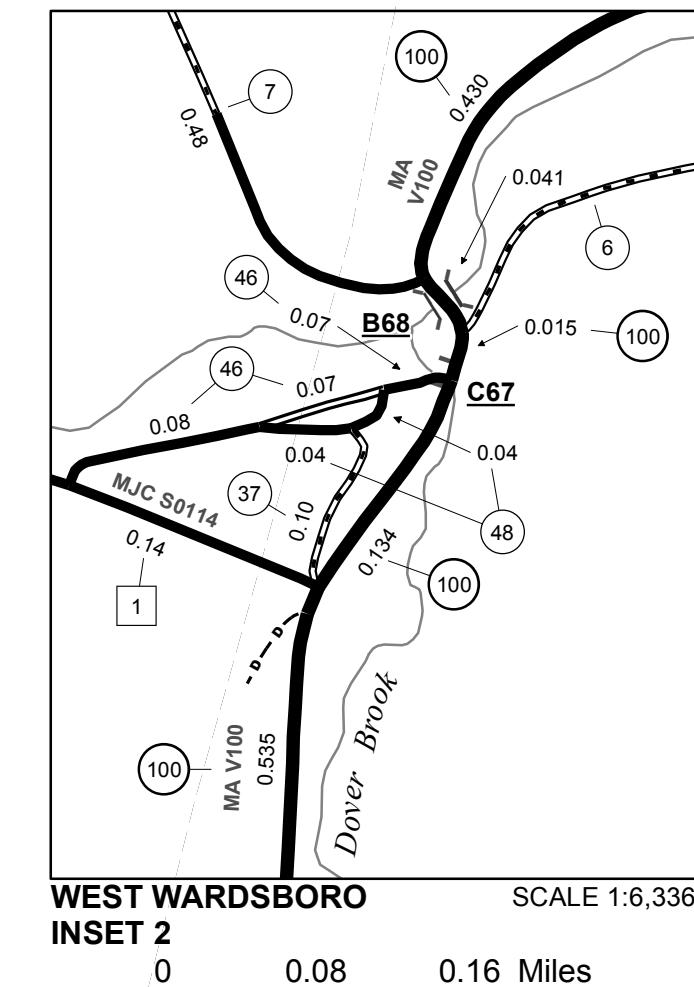
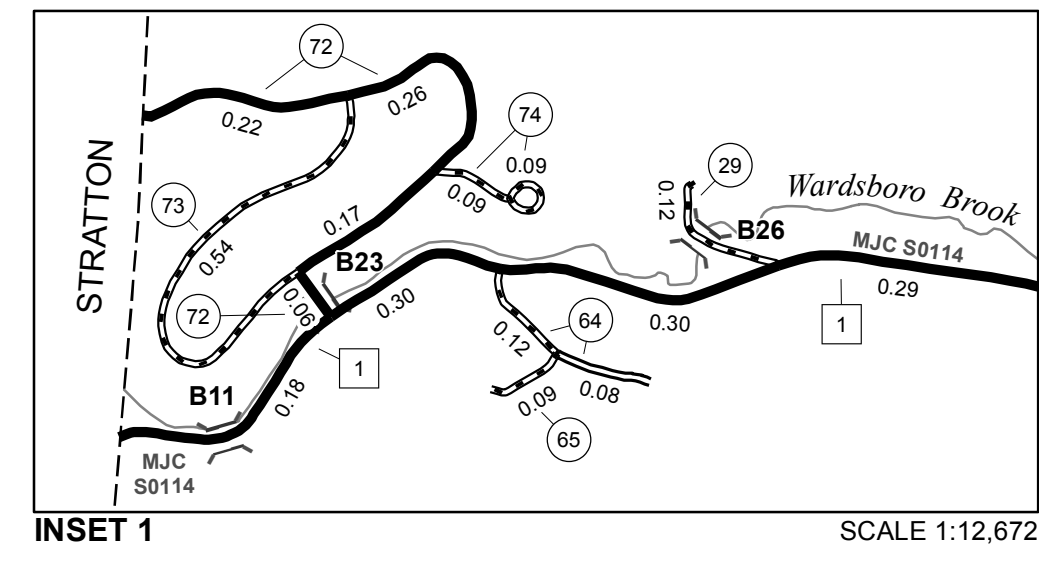
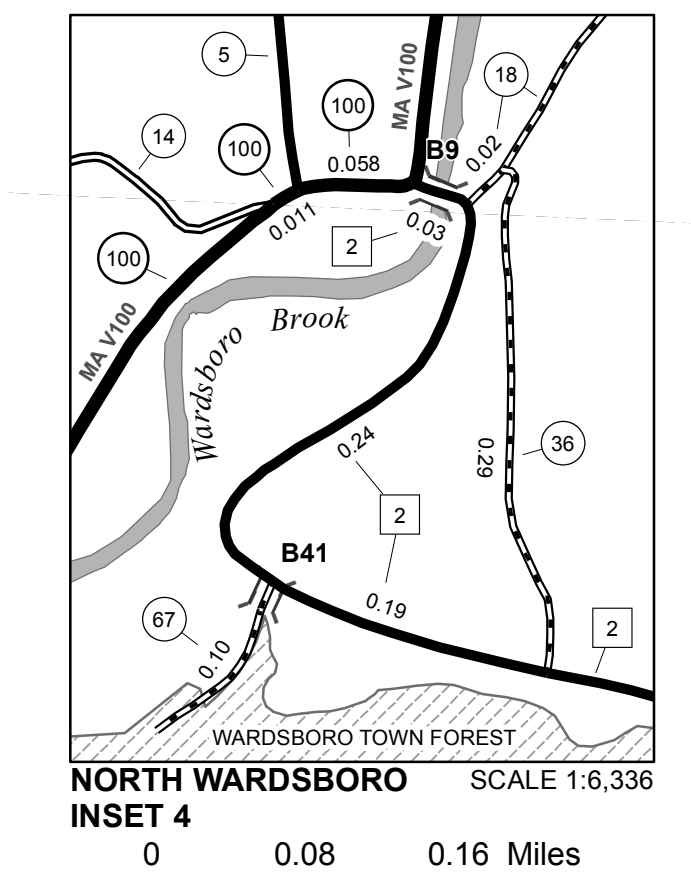
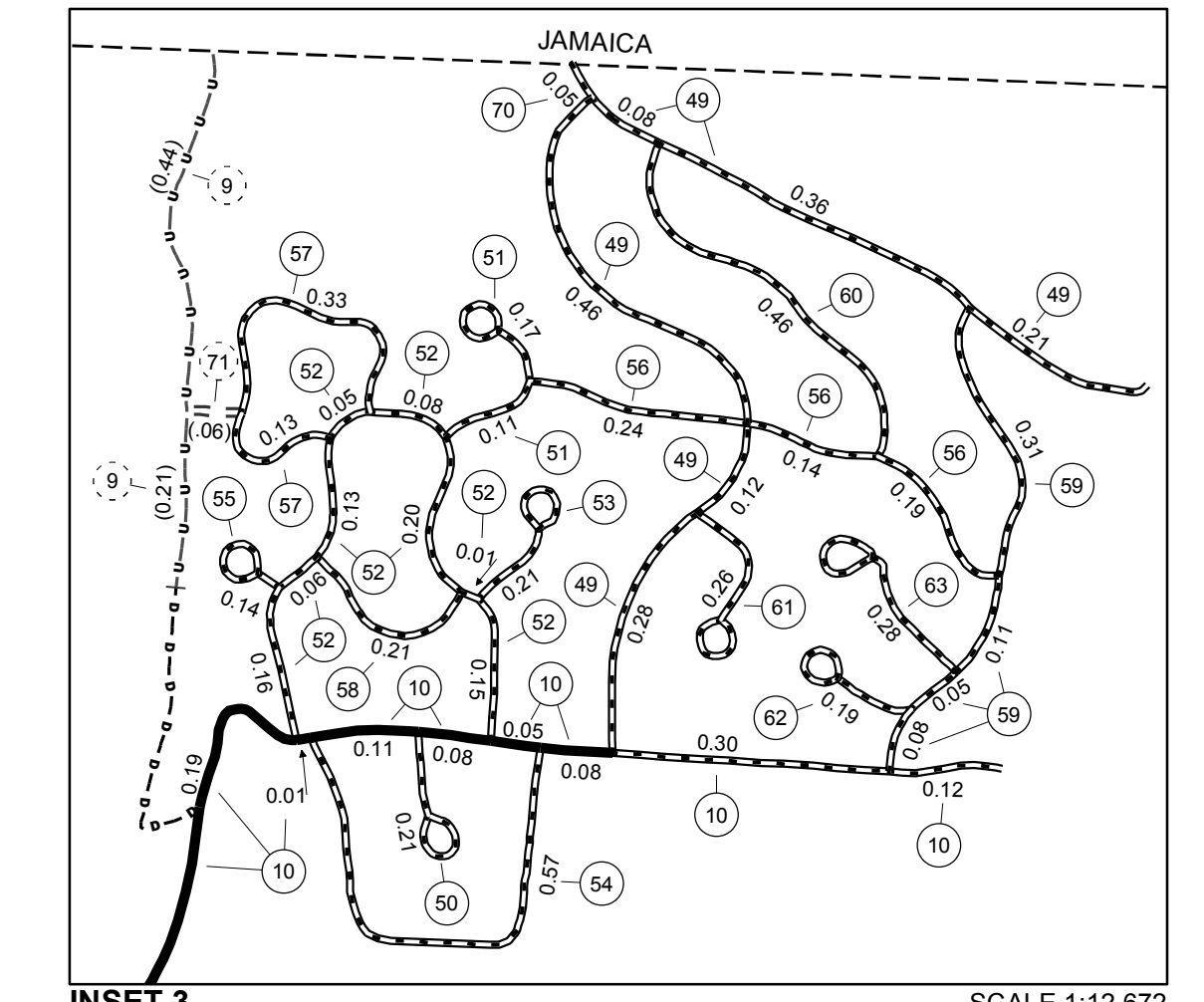
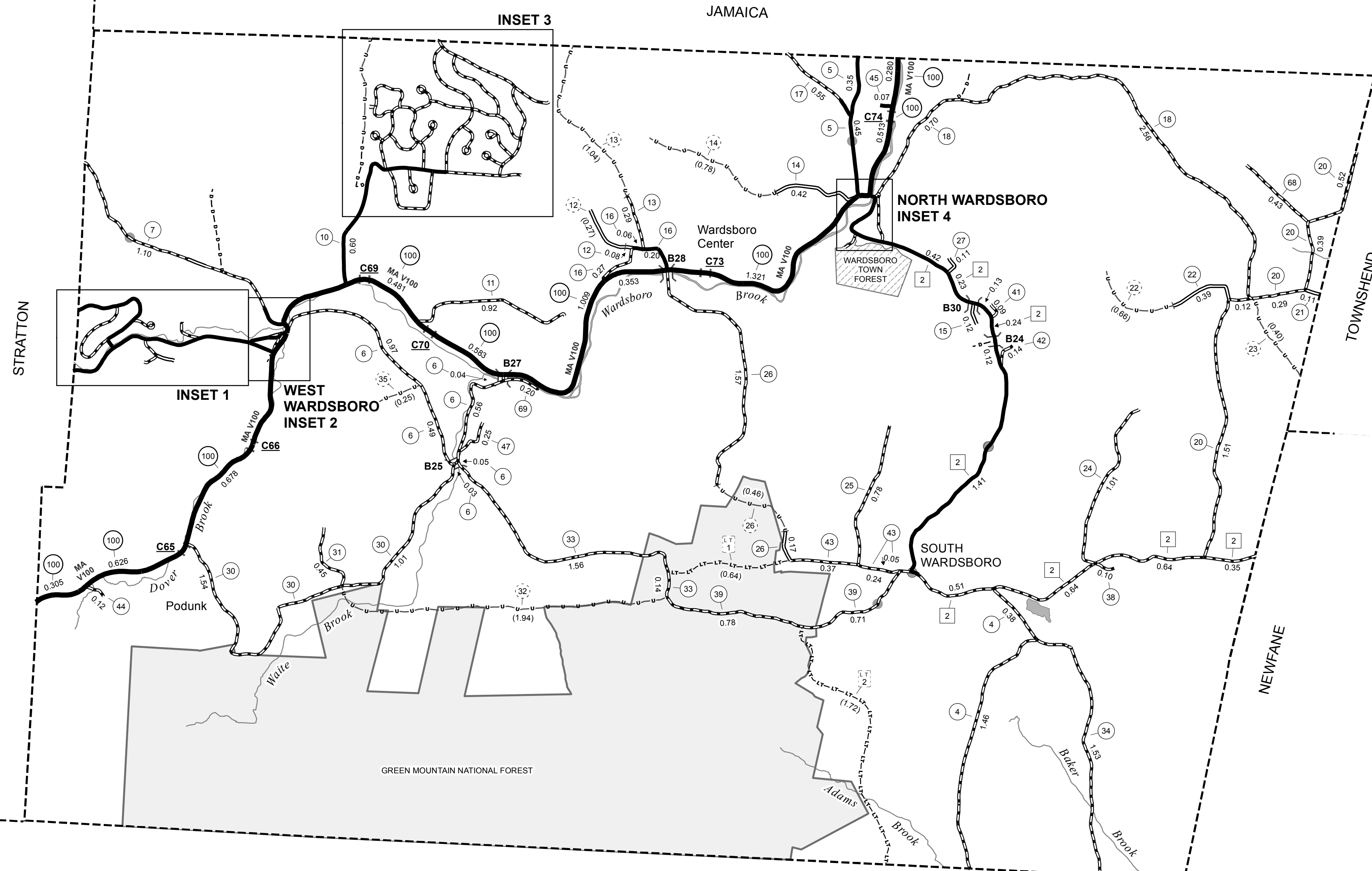


TOWN HWY. No.	CLASS 3	CLASS 4	TOWN HWY. No.	CLASS 3	CLASS 4
4	1.84		41	0.09	
5	0.80		42	0.14	
6	2.14		43	0.66	
7	1.58		44	0.12	
9		(0.65)	45	0.07	
10	1.54		46	0.22	
11	0.92		47	0.25	
12	0.08	(0.27)	48	0.08	
13	0.29	(1.04)	49	1.51	
14	0.42	(0.78)	50	0.21	
15	0.12		51	0.28	
16	0.53		52	0.84	
17	0.55		53	0.21	
18	3.28		54	0.57	
20	2.83		55	0.14	
21	0.11		56	0.57	
22	0.39	(0.66)	57	0.46	
23		(0.40)	58	0.21	
24	1.01		59	0.55	
25	0.78		60	0.46	
26	1.74	(0.46)	61	0.26	
27	0.11		62	0.19	
29	0.12		63	0.28	
30	2.55		64	0.20	
31	0.45		65	0.09	
32		(1.94)	67	0.10	
33	1.70		68	0.43	
34	1.53		69	0.20	
35		(0.25)	70	0.05	
37	0.29		71		(0.06)
38	0.10		72	0.71	
39	1.49		73	0.54	
			74	0.18	
TOTAL			40.26		6.51

LEGAL TRAIL No.	LENGTH IN MILES
1	(0.64)
2	(1.72)
TOTAL	2.36

MILEAGE SUMMARY		
CLASS 2		
TH-1	1.210	
TH-2	5.150	
TOTAL CLASS 2	6.360	
CLASS 3		
TOTAL CLASS 3	40.26	
TOTAL TOWN	46.620	
STATE HIGHWAY		
VT-100	7.373	
TOTAL STATE HIGHWAY	7.373	
TOTAL STATE	7.373	

TOTAL, TRAVELED HIGHWAYS, FEB. 10, 2018: 53.993
(Excludes Class 4 and Legal Trail Mileage)



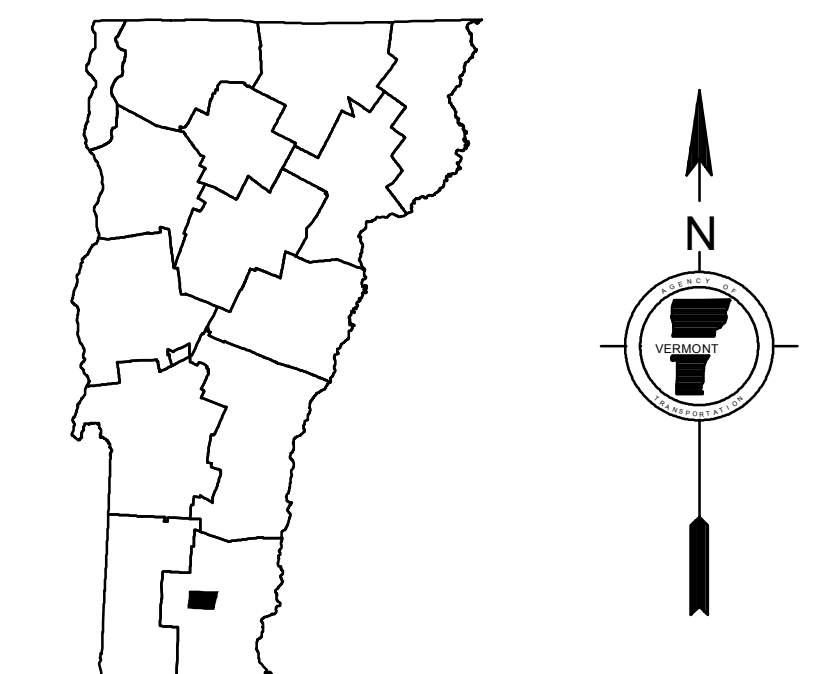
- HIGHWAYS**
 - INTERSTATE
 - U.S. ROUTE
 - STATE ROUTE
 - CLASS 1
 - CLASS 2
 - CLASS 3
 - CLASS 4
 - LEGAL TRAIL
 - PARK AND RIDE
- INTERSTATE OR DIVIDED HIGHWAY
- STATE - HARD SURFACE OR PAVED
- TOWN - HARD SURFACE OR PAVED
- GRAVEL
- SOIL OR GRADED AND DRAINED EARTH
- UNIMPROVED OR PRIMITIVE
- IMPASSABLE OR UNTRAVELED
- LEGAL TRAIL
- DISCONTINUED
- HIGHWAY CLASS CHANGE
- RAILROAD
- INACTIVE RAILROAD
- PUBLIC LAND - NATIONAL FOREST
- PUBLIC LAND - STATE/MUNICIPAL
- NATIONAL FOREST ROAD
- SFH STATE FOREST HIGHWAY

- POLITICAL SUBDIVISIONS**
 - STATE BOUNDARY
 - COUNTY BOUNDARY
 - TOWN BOUNDARY
 - VILLAGE BOUNDARY
 - URBAN COMPACT BOUNDARY
 - WATER BODY
 - STREAM OR BROOK
- BRIDGE OR CULVERT**
 - BRIDGE OR CULVERT > 20'
 - BRIDGE OR CULVERT 6' - 20'
 - BIKE PATH STRUCTURE
 - VT CULVERTS BRIDGE
 - VT CULVERTS CULVERT > 6'
- FEDERAL CLASSIFICATION IDENTIFIER**
 - MA MINOR ARTERIAL
 - MJC MAJOR COLLECTOR
 - MNC MINOR COLLECTOR
 - PA PRINCIPAL ARTERIAL
- B34 / C34 STATE BRIDGE OR CULVERT IDENTIFIER**
- B34 / C34 TOWN BRIDGE OR CULVERT IDENTIFIER**

DISCLAIMER:
 The untraveled highways (laid-out town highways), discontinued highways, and legal trails hereon are those of which the Agency of Transportation has record; others may exist.

Highway and bridge data by the Agency of Transportation. Town short structures drawn from the VT CULVERTS (formerly VOBCT) online database. All other data from the Vermont Center for Geographic Information. Only named streams shown.

Vermont State Plane Coordinate System
 North American Datum of 1983
 SPCS_Zone_Identifier: 4400
 Geodetic Reference System 80
 4,000-meter grid, Easting - Northing



VERMONT
GENERAL HIGHWAY MAP
Town of Wardsboro
 WINDHAM COUNTY
 Transportation District #2

Prepared by the
 Vermont Agency of Transportation
 Division of Policy, Planning and Intermodal Development
 in cooperation with
 U.S. Department of Transportation
 Federal Highway Administration

