

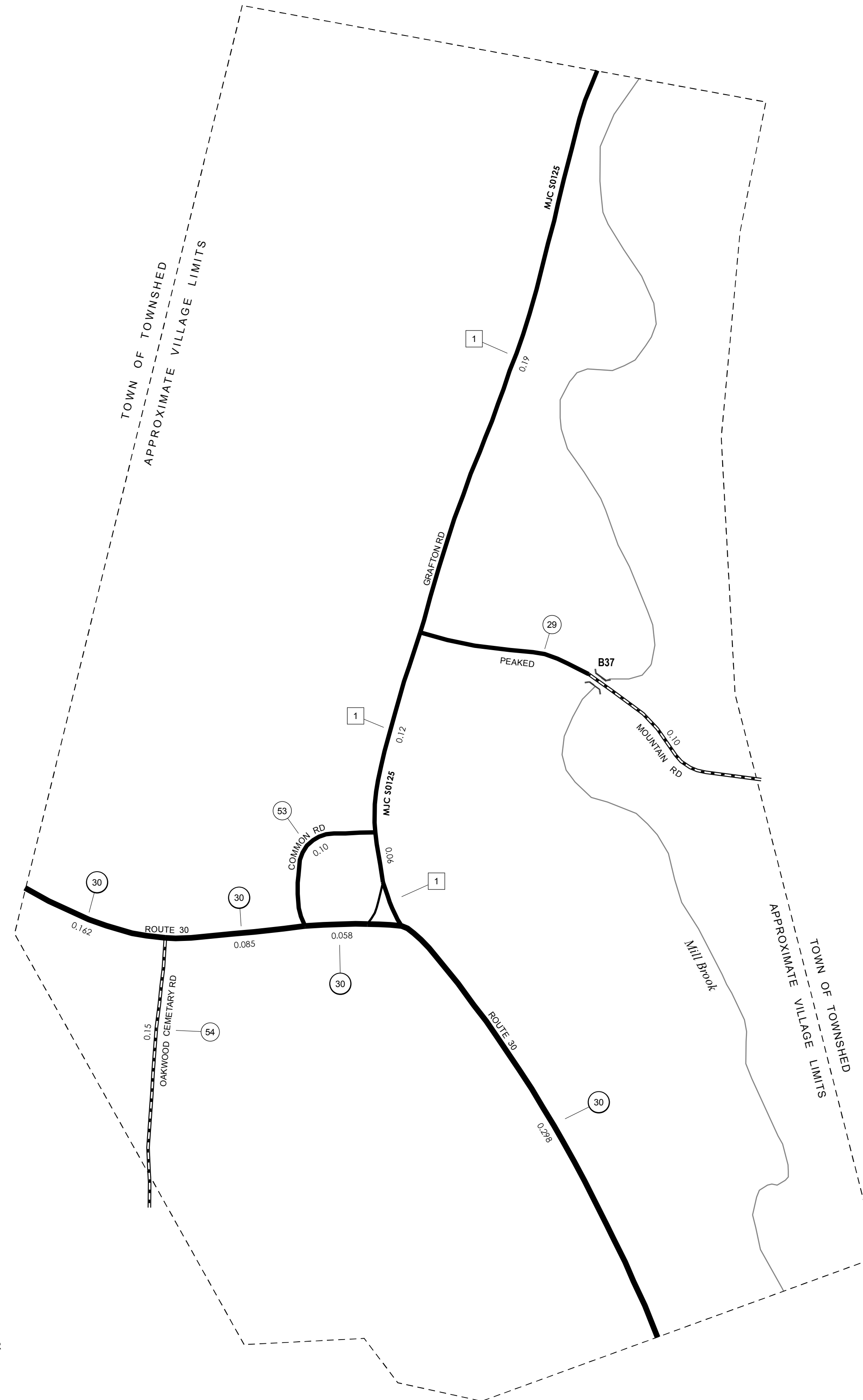
486,000

TOWN HWY. No.	LENGTH IN MILES		TOWN ROAD NAME
	CLASS 3	CLASS 4	
29	0.10		PEAKED MOUNTAIN RD
53	0.10		COMMON RD
54	0.15		OAKWOOD CEMETARY RD
TOTAL	0.35	0.00	

MILEAGE SUMMARY

CLASS 2			
TH-1	0.370		0.370
		TOTAL CLASS 2	0.370
CLASS 3			
		TOTAL CLASS 3	0.35
		TOTAL TOWN	0.720
STATE HIGHWAY			
VT-30	0.603		0.603
		TOTAL STATE HIGHWAY	0.603
		TOTAL STATE	0.603

TOTAL, TRAVELED HIGHWAYS, FEB. 10, 2014: 1.323
 (Excludes Class 4, Legal Trail, and Unidentified Corridor Mileage)

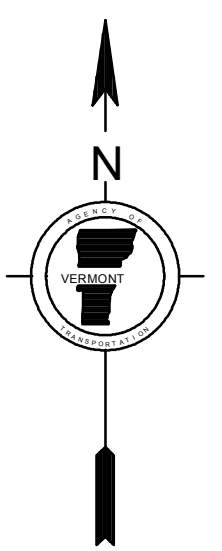
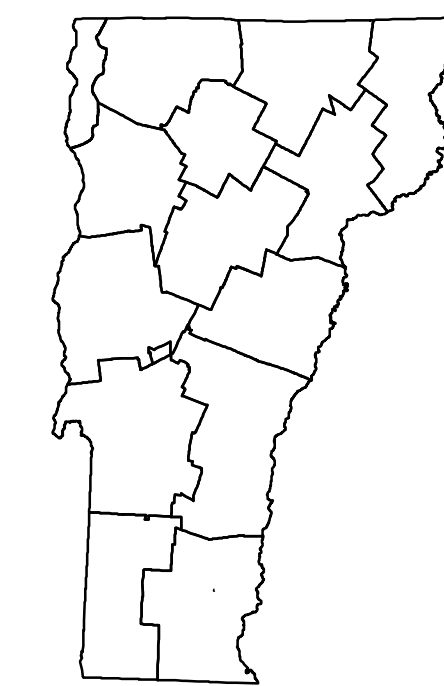


- HIGHWAYS**
- INTERSTATE
- U.S. ROUTE
- STATE ROUTE
- CLASS 1
- CLASS 2
- CLASS 3
- CLASS 4
- LEGAL TRAIL
- INTERSTATE OR DIVIDED HIGHWAY
- STATE - HARD SURFACE OR PAVED
- TOWN - HARD SURFACE OR PAVED
- GRAVEL
- SOIL OR GRADED AND DRAINED EARTH
- UNIMPROVED OR PRIMITIVE
- IMPASSABLE OR UNTRAVELED
- LEGAL TRAIL
- DISCONTINUED
- HIGHWAY CLASS CHANGE
- RAILROAD
- INACTIVE RAILROAD
- NATIONAL FOREST ROAD
- STATE FOREST HIGHWAY
- PARK AND RIDE
- PUBLIC LAND - GREEN MOUNTAIN NATIONAL FOREST
- PUBLIC LAND - STATE/MUNICIPAL
- POLITICAL SUBDIVISIONS**
- STATE BOUNDARY
- COUNTY BOUNDARY
- TOWN BOUNDARY
- VILLAGE BOUNDARY
- URBAN COMPACT BOUNDARY
- WATER BODY
- STREAM OR BROOK
- BRIDGE OR CULVERT**
- BRIDGE OR CULVERT > 20'
- BRIDGE OR CULVERT 6' - 20'
- VOBCIT BRIDGE
- VOBCIT CULVERT > 6'
- STATE BRIDGE OR CULVERT IDENTIFIER
- TOWN BRIDGE OR CULVERT IDENTIFIER
- FEDERAL CLASSIFICATION IDENTIFIER**
- FAU URBAN ARTERIAL OR COLLECTOR
- MA MINOR ARTERIAL
- MJC MAJOR COLLECTOR
- MNC MINOR COLLECTOR
- PA PRINCIPAL ARTERIAL

DISCLAIMER:
 The untraveled highways (laid-out town highways), discontinued highways, and legal trails hereon are those of which the Agency of Transportation has record; others may exist.

Highway and bridge data by the Agency of Transportation. Town short structures are drawn from the Vermont Online Bridge & Culvert Inventory Tool (VOBCIT) database. All other data from the Vermont Center for Geographic Information. Only named streams are shown.

Vermont State Plane Coordinate System
 North American Datum of 1983
 SPCS_Zone_Identifier: 4400
 Geodetic Reference System 80
 2,000-meter grid, Easting - Northing



VERMONT
GENERAL HIGHWAY MAP
Village of Townshend

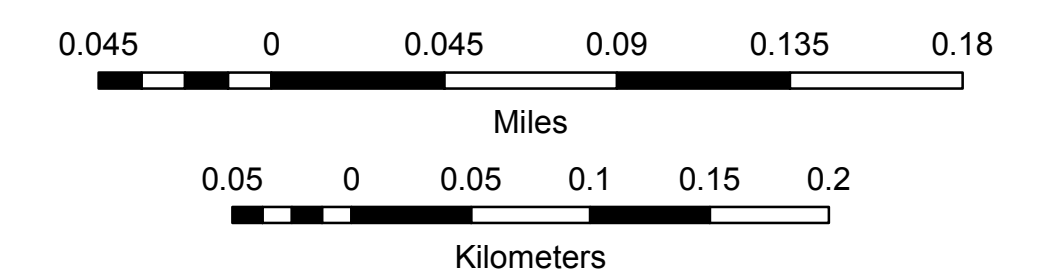
WINDHAM COUNTY

Transportation District #2

Prepared by the
 Vermont Agency of Transportation
 Division of Policy, Planning and Intermodal Development
 in cooperation with
 U.S. Department of Transportation
 Federal Highway Administration

Mileage as of February 10, 2014
 Map prepared October 03, 2014

SCALE 1:3,168



60,000

60,000

486,000