

TOWN HWY. No.	LENGTH IN MILES CLASS 3	LENGTH IN MILES CLASS 4	TOWN HWY. No.	LENGTH IN MILES CLASS 3	LENGTH IN MILES CLASS 4
6	0.10		40		(0.09)
8	1.73		41	2.72	
9	2.06		42	0.40	
11	0.32		43	1.56	
12		(0.30)	44	0.28	
13	1.17		45	0.54	(0.35)
14	0.18		46	1.44	
15	0.34		47	0.24	
16	0.21		48	0.90	
17	2.78		49	0.36	
18	1.48		50	0.19	
19	1.27	(0.35)	51	1.12	
20	0.39		52	0.35	(0.62)
21	0.04		55	0.11	
22	0.15		56	0.19	
23	0.08		57	0.10	
24	0.42		58	0.16	
25	0.25		59	0.74	
26	0.85	(1.15)	60	0.20	
27	1.00		63	0.15	
28	0.91	(0.09)	64	0.28	
29	0.56		65	0.40	
30	0.24		66	1.19	
31	0.14	(0.24)	67	0.30	
32	0.31		68	0.22	
33	0.96	(0.64)	69	0.30	
35	0.47		70	0.11	
36	3.51		71	0.41	
37	0.82		72	0.43	
38	0.35		73	0.12	
39	1.41				
<b>TOTAL</b>			<b>40.01</b>		<b>3.83</b>

TOWN HWY. No.	LENGTH IN MILES "NOT UP TO STANDARD"
22	(0.16)
48	(1.18)
<b>TOTAL</b>	<b>1.34</b>

\*The sections of the town highways listed above are legally Class 3, but have been deemed "Not Up To Standard" and are functionally Class 4 Town Highways

LEGAL TRAIL No.	LENGTH IN MILES LEGAL TRAIL
1	(0.50)
2	(1.11)
3	(1.37)
4	(0.25)
<b>TOTAL</b>	<b>3.23</b>

**MILEAGE SUMMARY**

CLASS 2		
TH-1	2.550	
TH-2	3.200	
TH-3	0.340	
TH-4	0.490	
TH-5	2.590	
TH-6	3.020	
<b>TOTAL CLASS 2</b>		<b>12.190</b>
<b>TOTAL CLASS 3</b>		<b>40.01</b>
<b>TOTAL TOWN</b>		<b>52.200</b>
STATE HIGHWAY		
VT-11	7.556	
VT-100	7.646	
<b>TOTAL STATE HIGHWAY</b>		<b>15.202</b>
<b>TOTAL STATE</b>		<b>15.202</b>

**TOTAL, TRAVELED HIGHWAYS, FEB. 10, 2014: 67.402**  
(Excludes Class 4, Legal Trail, and Unidentified Corridor Mileage)

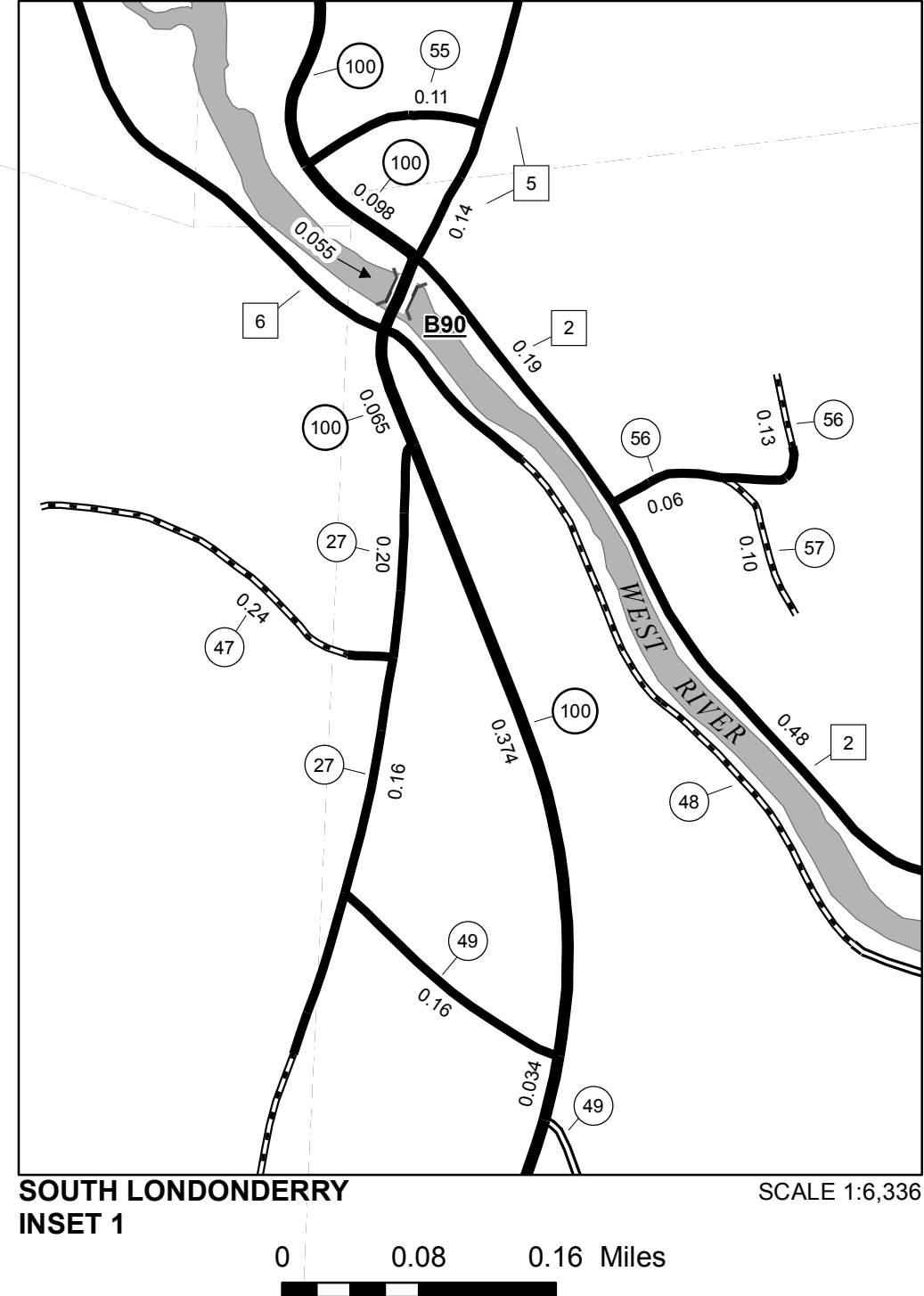
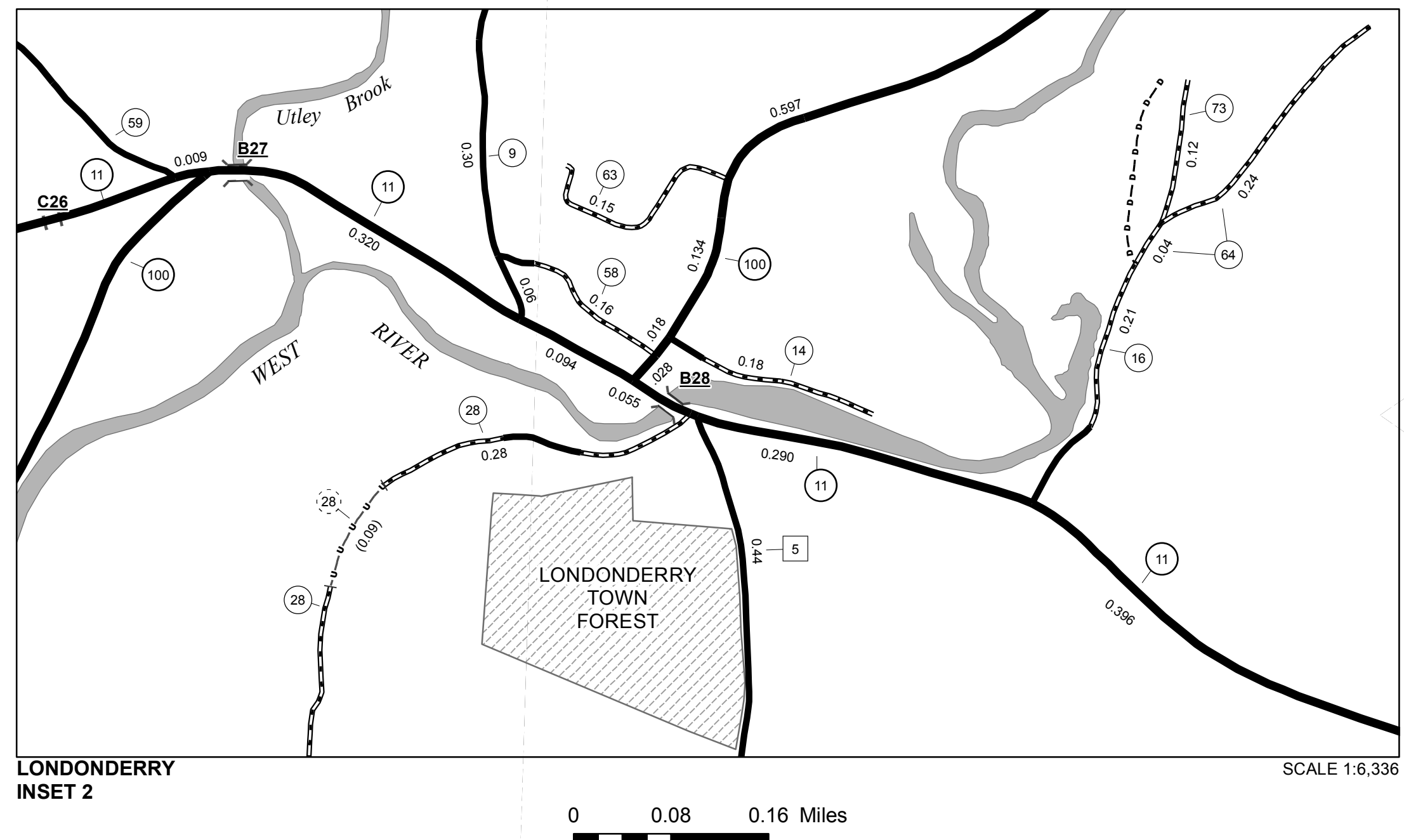
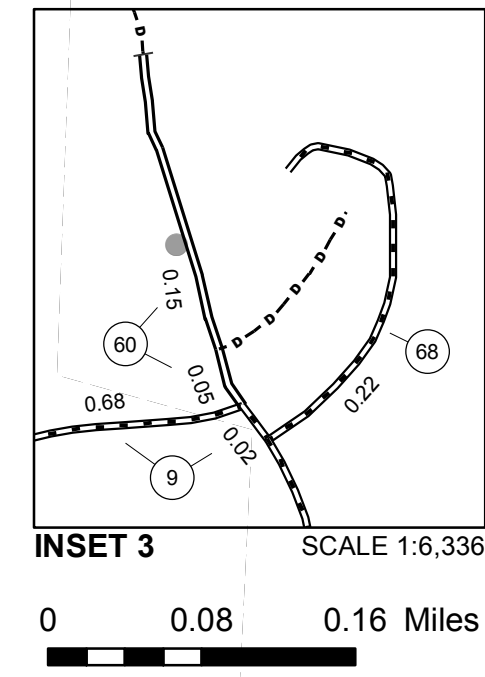
- HIGHWAYS**
- INTERSTATE
  - U.S. ROUTE
  - STATE ROUTE
  - CLASS 1
  - CLASS 2
  - CLASS 3
  - CLASS 4
  - LEGAL TRAIL
  - INTERSTATE OR DIVIDED HIGHWAY
  - STATE - HARD SURFACE OR PAVED
  - TOWN - HARD SURFACE OR PAVED
  - GRAVEL
  - SOIL OR GRADED AND DRAINED EARTH
  - UNIMPROVED OR PRIMITIVE
  - IMPASSABLE OR UNTRAVELED
  - LEGAL TRAIL
  - DISCONTINUED
  - HIGHWAY CLASS CHANGE
  - RAILROAD
  - INACTIVE RAILROAD
  - NFR NATIONAL FOREST ROAD
  - SFH STATE FOREST HIGHWAY
  - P PARK AND RIDE

- PUBLIC LAND - GREEN MOUNTAIN NATIONAL FOREST
- PUBLIC LAND - STATE/MUNICIPAL
- POLITICAL SUBDIVISIONS**
- STATE BOUNDARY
- COUNTY BOUNDARY
- TOWN BOUNDARY
- VILLAGE BOUNDARY
- URBAN COMPACT BOUNDARY
- WATER BODY
- STREAM OR BROOK
- BRIDGE OR CULVERT**
- BRIDGE OR CULVERT > 20'
- BRIDGE OR CULVERT 6' - 20'
- VOCBIT BRIDGE
- VOCBIT CULVERT > 6'
- B34 / C34 STATE BRIDGE OR CULVERT IDENTIFIER
- B34 / C34 TOWN BRIDGE OR CULVERT IDENTIFIER

- FEDERAL CLASSIFICATION IDENTIFIER**
- FAU URBAN ARTERIAL OR COLLECTOR
  - MA MINOR ARTERIAL
  - MJC MAJOR COLLECTOR
  - MNC MINOR COLLECTOR
  - PA PRINCIPAL ARTERIAL

**DISCLAIMER:**  
The untraveled highways (laid-out town highways), discontinued highways, and legal trails hereon are those of which the Agency of Transportation has record; others may exist.  
Highway and bridge data by the Agency of Transportation. Town short structures are drawn from the Vermont Online Bridge & Culvert Inventory Tool (VOCBIT) database. All other data from the Vermont Center for Geographic Information. Only named streams are shown.

Vermont State Plane Coordinate System  
North American Datum of 1983  
SPCS\_Zone\_Identifier: 4400  
Geodetic Reference System 80  
4,000-meter grid, Easting - Northing



**VERMONT GENERAL HIGHWAY MAP**  
**Town of Londonderry**  
WINDHAM COUNTY  
Transportation District #2  
Prepared by the Vermont Agency of Transportation  
Division of Policy, Planning and Intermodal Development  
in cooperation with  
U.S. Department of Transportation  
Federal Highway Administration  
Mileage as of February 10, 2014  
Map prepared October 09, 2014  
SCALE 1:31,680