

TOWN HWY. NO.	LENGTH IN MILES CLASS 3	LENGTH IN MILES CLASS 4	LEGAL TRAIL NO.	LENGTH IN MILES
4	1.070		1	(0.650)
5	0.960		2	(0.750)
6	1.370		3	(0.080)
7	0.150		4	(0.800)
8	0.020		5	(0.150)
9	0.590		6	(1.000)
10	0.900		7	(0.400)
11	0.300		8	(1.100)
12	0.570		9	(0.200)
13	0.780		10	(0.850)
14	0.680		11	(2.100)
15	2.830		12	(0.300)
16	0.150		13	(0.740)
17	0.920		14	(0.450)
18	0.340		15	(0.740)
19	0.650		16	(0.950)
20	3.940		17	(1.100)
21	0.280		18	(0.300)
22	0.580		19	(0.420)
23	0.300		20	(1.000)
24	0.940		21	(1.000)
25	0.120		22	(2.040)
26	0.200		23	(1.350)
27	0.700		24	(0.400)
28	0.410		25	(0.700)
29			<b>TOTAL</b>	<b>19.570</b>
30	5.120			
31	0.060			
32				
33	0.040			
34	0.100			
35	3.890			
36	1.030			
37	0.250			
38	0.080			
39	0.560			
41	1.400			
<b>TOTAL</b>	<b>43.060</b>	<b>2.880</b>		

\* This portion of town highway is Class 3, but is functionally Class 4

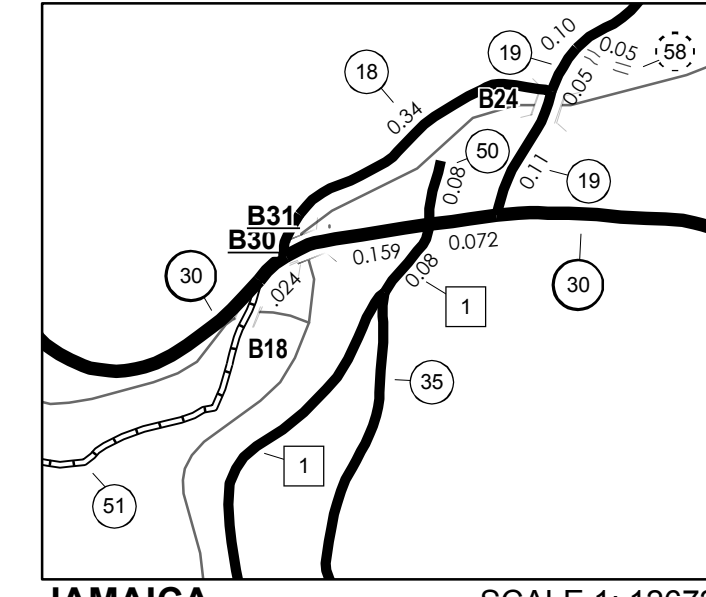
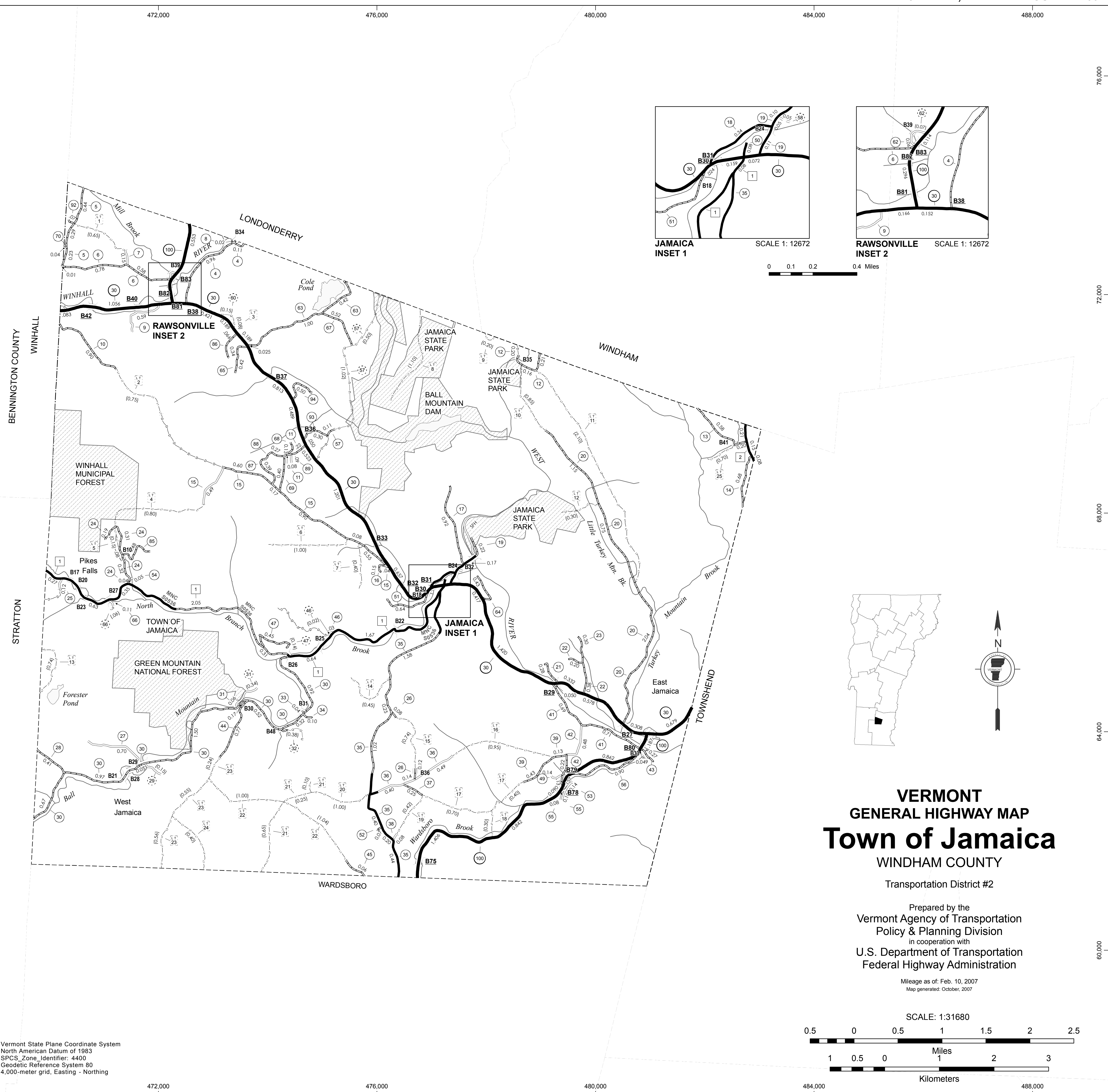
MILEAGE SUMMARY			
CLASS 2			
TH-1	6.000		
TH-2	0.440		
<b>TOTAL CLASS 2</b>	<b>6.440</b>		
CLASS 3			
<b>TOTAL CLASS 3</b>	<b>43.060</b>		
<b>TOTAL TOWN</b>	<b>49.500</b>		
STATE HIGHWAY			
VT-30	10.119		
VT-100	4.556		
<b>TOTAL STATE HIGHWAY</b>	<b>14.675</b>		
<b>TOTAL STATE</b>	<b>14.675</b>		

**TOTAL, TRAVELED HIGHWAYS, FEB. 10, 2007: 64.175**  
(Excludes Class 4 and Legal Trail Mileage)

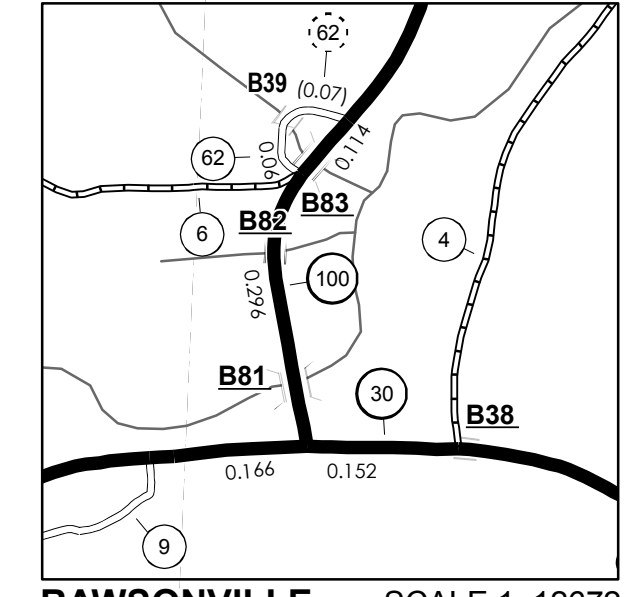
- HIGHWAYS**
- INTERSTATE
- U.S. ROUTE
- STATE ROUTE
- CLASS 1
- CLASS 2
- CLASS 3
- CLASS 4
- LEGAL TRAIL
- INTERSTATE OR DIVIDED HIGHWAY
- STATE - HARD SURFACE OR PAVED
- TOWN - HARD SURFACE OR PAVED
- GRAVEL
- SOIL OR GRADED AND DRAINED EARTH
- UNIMPROVED OR PRIMITIVE
- IMPASSABLE OR UNTRAVELED
- LEGAL TRAIL
- DISCONTINUED
- HIGHWAY CLASS CHANGE
- RAILROAD
- PUBLIC LAND
- POLITICAL SUBDIVISIONS
- STATE BOUNDARY
- COUNTY BOUNDARY
- TOWN BOUNDARY
- VILLAGE BOUNDARY
- URBAN COMPACT BOUNDARY
- WATER BODIES
- OPEN WATER
- SWAMP
- STREAM OR BROOK
- BRIDGE OR CULVERT
- BRIDGE OR CULVERT GREATER THAN 20'
- BRIDGE OR CULVERT 6' - 20'
- B34 STATE BRIDGE IDENTIFIER
- B34 TOWN BRIDGE IDENTIFIER
- FEDERAL CLASSIFICATION IDENTIFIER
- FAU URBAN ARTERIAL OR COLLECTOR
- MA MINOR ARTERIAL
- MJC MAJOR COLLECTOR
- MNC MINOR COLLECTOR
- PA PRINCIPAL ARTERIAL

**DISCLAIMER:**  
The untraveled highways (laid-out town highways), discontinued highways, and legal trails shown hereon are those of which the Agency of Transportation has record; others may exist.  
Highway and bridge data by the Agency of Transportation, Policy & Planning Division. All other data from the Vermont Center for Geographic Information.

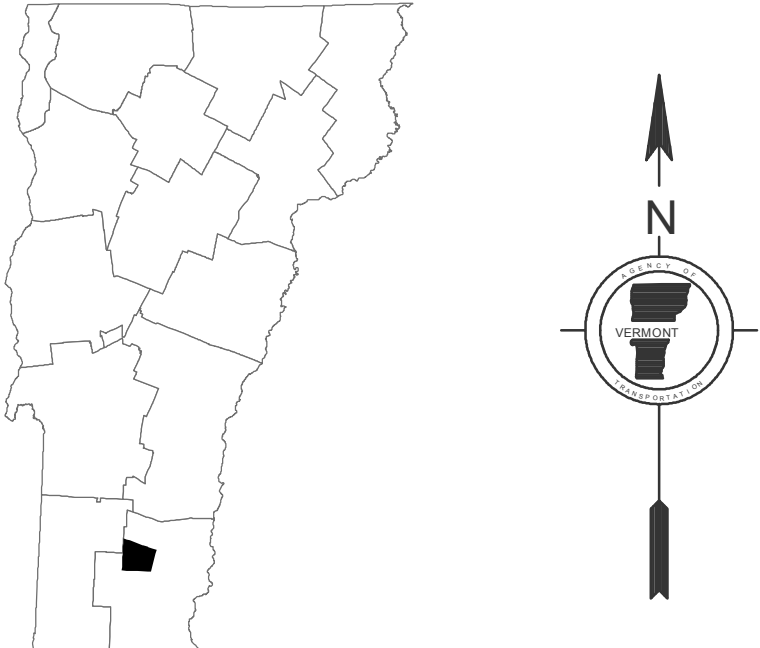
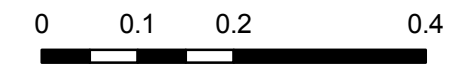
Vermont State Plane Coordinate System  
North American Datum of 1983  
SPCS\_Zone\_Identifier: 4400  
Geodetic Reference System 80  
4,000-meter grid, Easting - Northing



JAMAICA INSET 1 SCALE 1: 12672



RAWSONVILLE INSET 2 SCALE 1: 12672



# VERMONT GENERAL HIGHWAY MAP Town of Jamaica WINDHAM COUNTY

Transportation District #2

Prepared by the  
Vermont Agency of Transportation  
Policy & Planning Division  
in cooperation with  
U.S. Department of Transportation  
Federal Highway Administration

Mileage as of: Feb. 10, 2007  
Map generated: October, 2007

SCALE: 1:31680

