

TOWN HWY. No.	LENGTH IN MILES CLASS 3	CLASS 4
3	2.49	
4	2.70	
5	1.75	
6	0.22	(0.07)
7	0.48	
8	0.60	
9	0.87	
10	0.45	(0.75)
11	0.44	
12	2.50	
13	0.90	
14	0.36	
15	0.19	
16	1.02	
17	0.47	(0.31)
18	2.71	
19	0.32	
20	0.28	
21	1.20	(0.40)
22	2.10	(0.31)
23	0.11	(0.07)
24	4.68	
25	0.63	
26	0.30	(0.10)
27	1.10	
28	0.89	
29	0.90	
30	2.30	
32	2.19	
33	1.04	
34	1.16	
35	0.52	
36	1.10	
37	1.76	
38		
39	1.17	(1.10)
40	0.28	
41	0.29	
42	0.45	
43	1.18	
44	0.91	
45	0.02	(0.08)
46	0.40	
47	0.34	(0.02)
48		(0.05)
50	0.65	(0.89)
51	0.25	
52	0.13	(1.54)
53	0.10	
54	0.20	
55	0.31	
58	0.37	
60	0.14	
61	0.07	
62	0.04	
63		(0.06)
TOTAL	48.03	5.75

TOWN HWY. No.	LENGTH IN MILES "NOT UP TO STANDARD"
31	(0.15)
TOTAL	0.15

*The sections of the town highways listed above are legally Class 3, but have been deemed "Not Up To Standard" and are functionally Class 4 Town Highways

LEGAL TRAIL No.	LENGTH IN MILES LEGAL TRAIL
1	(0.15)
2	(0.90)
3	(0.10)
4	(0.54)
5	(1.10)
7	(0.89)
8	(1.25)
11	(1.00)
12	(1.40)
13	(0.38)
14	(1.00)
15	(0.50)
TOTAL	9.21

MILEAGE SUMMARY		
CLASS 2		
TH-1	9.860	
TH-2	6.940	
TOTAL CLASS 2	16.800	
CLASS 3		
TOTAL CLASS 3	48.03	
TOTAL TOWN	64.830	
STATE HIGHWAY		
VT-112	5.846	
TOTAL STATE HIGHWAY	5.846	
TOTAL STATE	5.846	

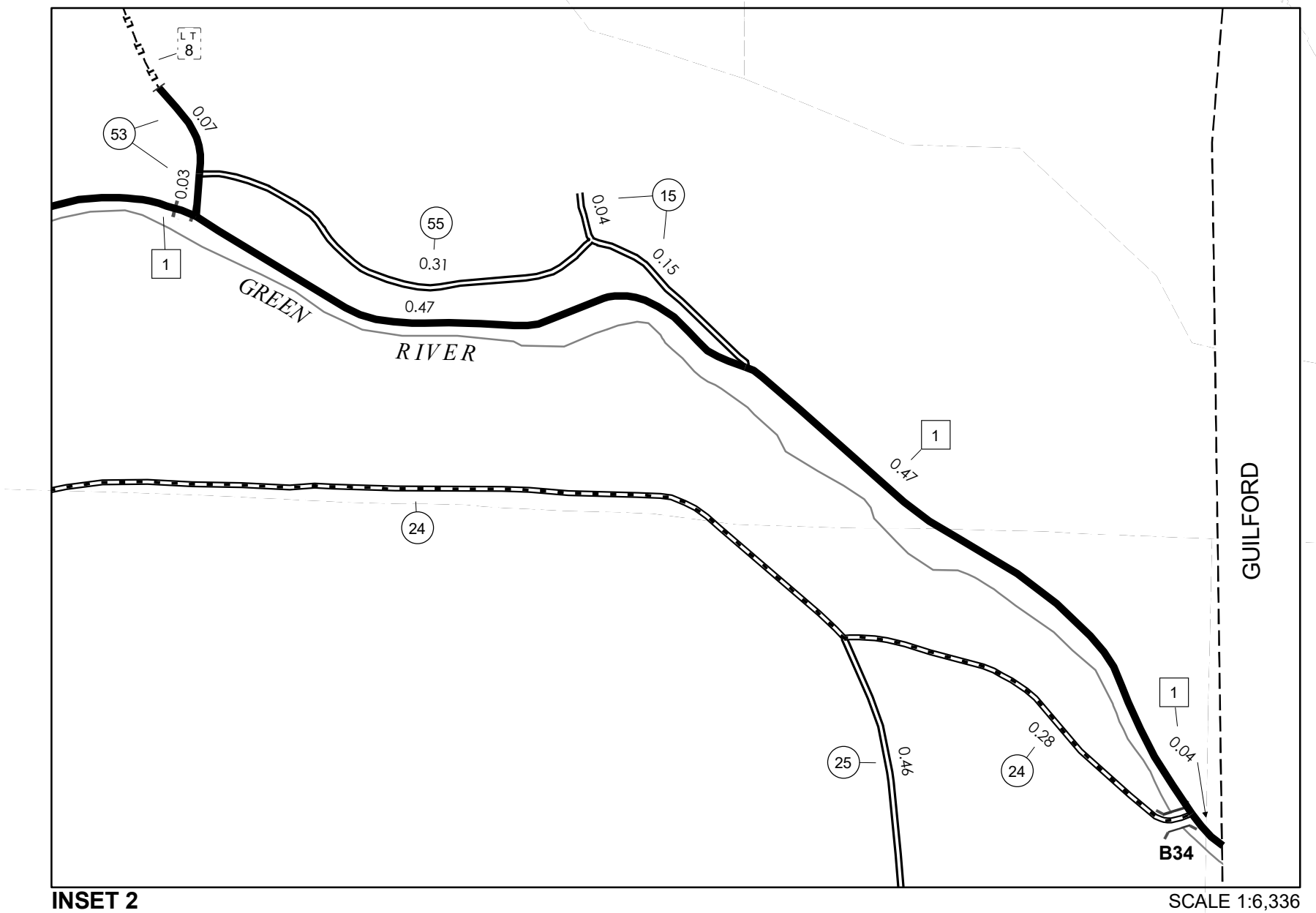
TOTAL, TRAVELED HIGHWAYS, FEB. 10, 2026: 70.676
(Excludes Class 4 and Legal Trail Mileage)

DISCLAIMER:
The untraveled highways (laid-out town highways), discontinued highways, and legal trails herein are those of which the Agency of Transportation has record; others may exist.

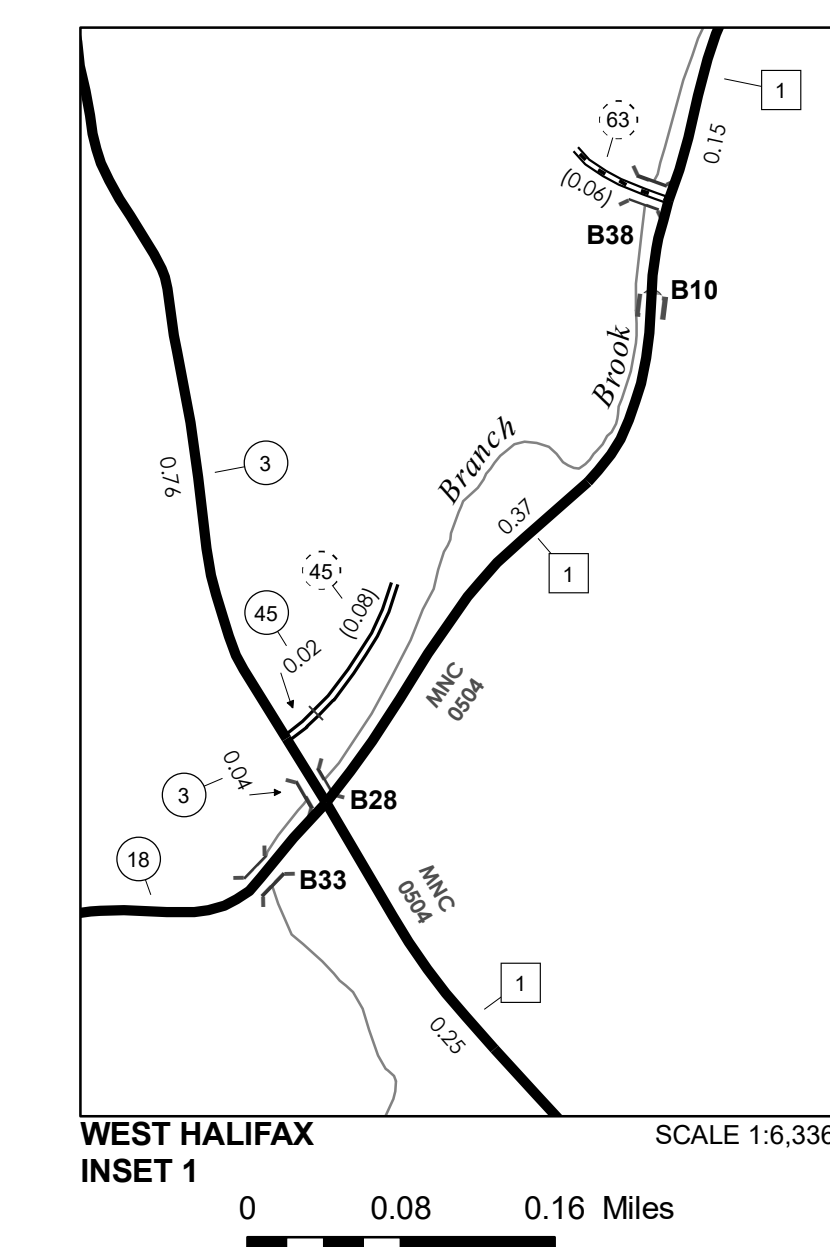
Highway and bridge data by the Agency of Transportation. Town short structures drawn from the VT CULVERTS (formerly VOBCT) online database. All other data from the Vermont Open Geodata Portal. Only named streams shown.

Accessibility Statement: The Agency of Transportation is committed to ensuring accessibility and digital accessibility for all. If you need language assistance, reasonable accommodation, or alternative format, please email johnathan.croft@vermont.gov.

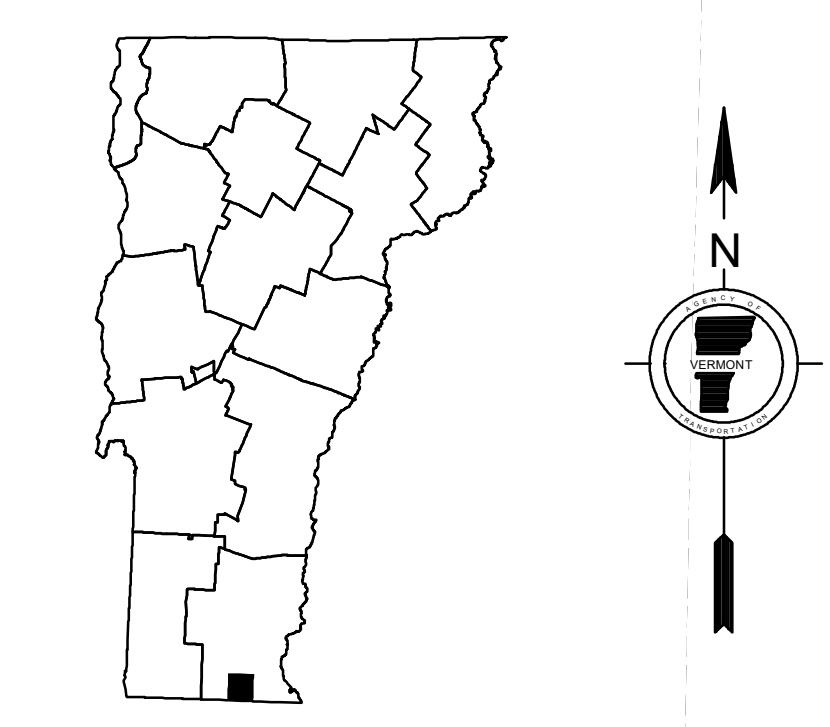
- | | | |
|---|---|--|
| <p>HIGHWAYS</p> <ul style="list-style-type: none"> INTERSTATE U.S. ROUTE STATE ROUTE CLASS 1 CLASS 2 CLASS 3 CLASS 4 LEGAL TRAIL PARK AND RIDE | <ul style="list-style-type: none"> INTERSTATE OR DIVIDED HIGHWAY STATE - HARD SURFACE OR PAVED TOWN - HARD SURFACE OR PAVED GRAVEL SOIL OR GRADED AND DRAINED EARTH UNIMPROVED OR PRIMITIVE IMPASSABLE OR UNTRAVELED LEGAL TRAIL DISCONTINUED HIGHWAY CLASS CHANGE RAILROAD INACTIVE RAILROAD PUBLIC LAND - NATIONAL FOREST PUBLIC LAND - STATE/MUNICIPAL NFR NATIONAL FOREST ROAD ACE ARMY CORPS OF ENGINEERS USGH UNITED STATES GOV. HWY. | <p>POLITICAL SUBDIVISIONS</p> <ul style="list-style-type: none"> STATE BOUNDARY COUNTY BOUNDARY TOWN BOUNDARY VILLAGE BOUNDARY URBAN COMPACT BOUNDARY WATER BODY STREAM OR BROOK <p>BRIDGE OR CULVERT</p> <ul style="list-style-type: none"> BRIDGE OR CULVERT > 20' BRIDGE OR CULVERT 6' - 20' BIKE PATH STRUCTURE VT CULVERTS BRIDGE VT CULVERTS CULVERT > 6' <p>FEDERAL CLASSIFICATION IDENTIFIER</p> <ul style="list-style-type: none"> MA MINOR ARTERIAL MJC MAJOR COLLECTOR MNC MINOR COLLECTOR PA PRINCIPAL ARTERIAL <p>B34 / C34 STATE BRIDGE OR CULVERT IDENTIFIER
B34 / C34 TOWN BRIDGE OR CULVERT IDENTIFIER</p> |
|---|---|--|



0 0.08 0.16 Miles



0 0.08 0.16 Miles



VERMONT GENERAL HIGHWAY MAP

Town of Halifax

WINDHAM COUNTY

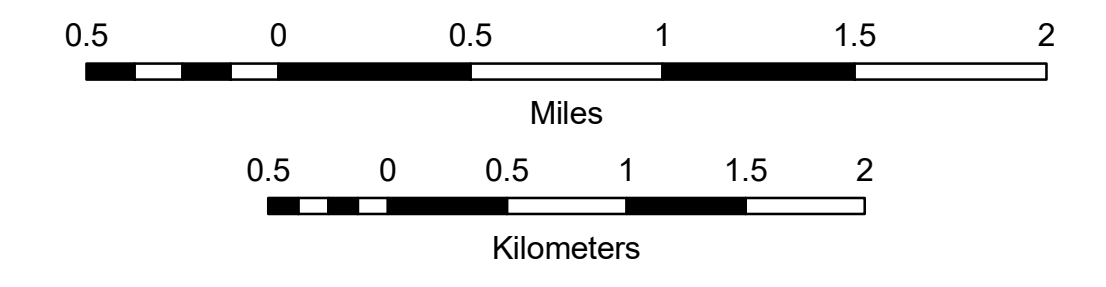
Transportation District #1

Prepared by the Vermont Agency of Transportation Highway Division in cooperation with

U.S. Department of Transportation Federal Highway Administration

Mileage as of February 10, 2026
Map prepared May 27, 2026

SCALE 1:31,680



Vermont State Plane Coordinate System
North American Datum of 1983
SPCS_Zone_Identifier: 4400
Geodetic Reference System 80
4,000-meter grid, Easting - Northing