

TOWN HWY. No.	LENGTH IN MILES CLASS 3	LENGTH IN MILES CLASS 4
3	2.49	
4	2.70	
5	1.75	
6	0.22	(0.07)
7	0.48	
8	0.60	
9	0.87	
10	0.45	
11	0.44	
12	2.50	
13	0.90	
14	0.36	
15	0.19	
16	1.02	
17	0.28	(0.50)
18	2.71	
19	0.32	
20	0.28	(0.40)
21	1.20	
22	2.10	(0.07)
23	0.11	
24	4.68	(0.07)
25	0.63	
26	0.30	(0.10)
27	1.10	
28	0.80	
29	0.90	
30	2.30	
32	2.19	
33	1.04	
34	1.16	
35	0.52	
36	1.10	
37	1.76	
38		(1.10)
39	1.17	
40	0.28	
41	0.29	
42	0.45	
43	1.18	
44	0.59	(0.37)
45	0.02	(0.08)
46	0.40	
47	0.34	(0.02)
48		(0.05)
50	0.65	(0.89)
51	0.25	
52	0.13	(1.54)
53	0.10	
54	0.20	
55	0.31	
58	0.37	
60	0.14	
61	0.07	
62	0.04	
63		(0.06)
TOTAL	47.52	5.25

TOWN HWY. No.	LENGTH IN MILES "NOT UP TO STANDARD"
31	(0.15)
TOTAL	0.15

*The sections of the town highways listed above are legally Class 3, but have been deemed "Not Up To Standard" and are functionally Class 4 Town Highways

LEGAL TRAIL No.	LENGTH IN MILES LEGAL TRAIL
1	(0.15)
2	(0.90)
3	(0.10)
4	(0.85)
5	(1.10)
6	(0.75)
7	(0.89)
8	(1.25)
11	(1.00)
12	(1.40)
13	(0.38)
14	(1.00)
15	(0.50)
TOTAL	10.27

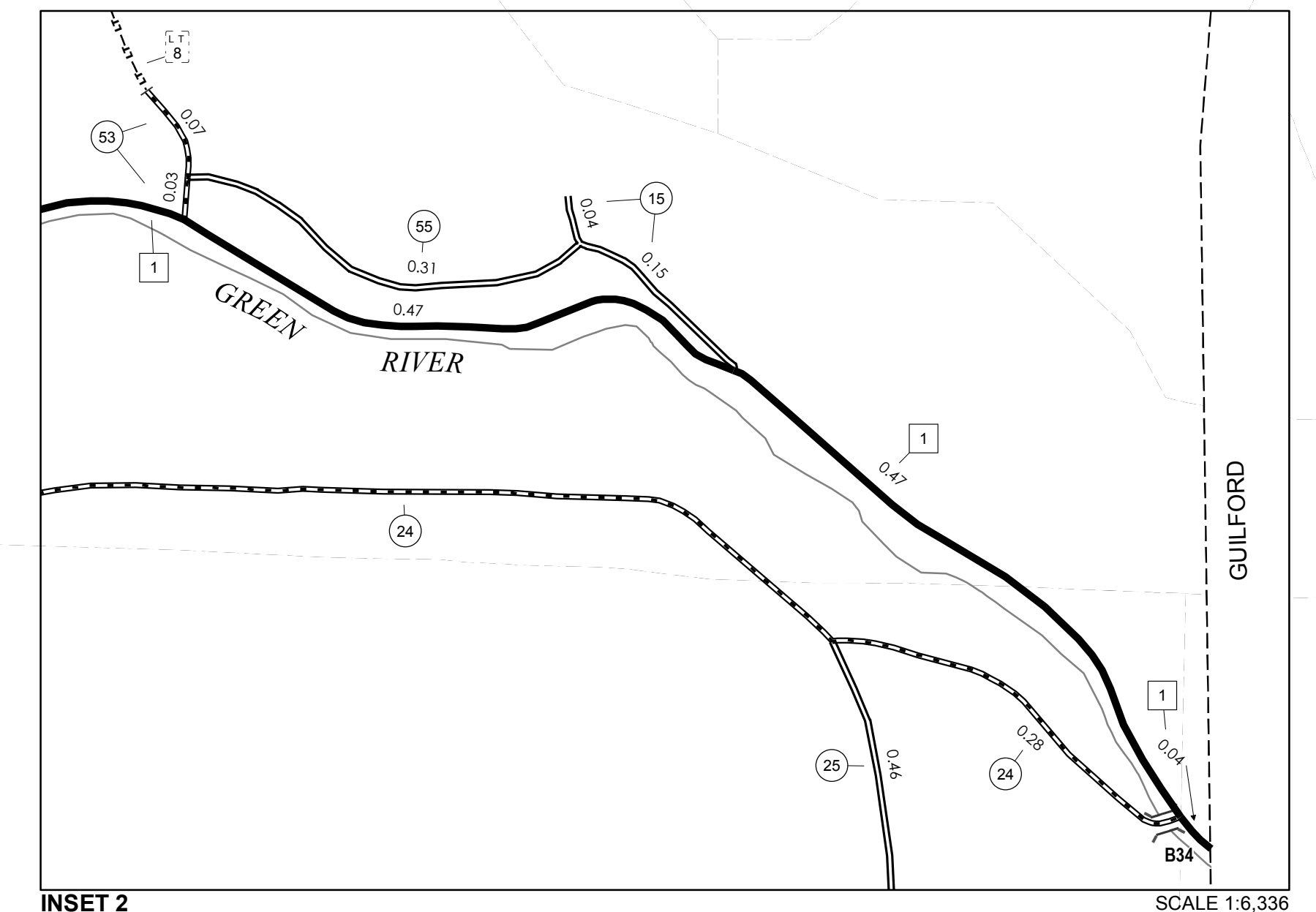
MILEAGE SUMMARY		
CLASS 2		
TH-1	9,860	
TH-2	6,940	
TOTAL CLASS 2	16,800	
CLASS 3		
TOTAL CLASS 3	47.52	
TOTAL TOWN	64.320	
STATE HIGHWAY		
VT-112	5,846	
TOTAL STATE HIGHWAY	5,846	
TOTAL STATE	5,846	

TOTAL, TRAVELED HIGHWAYS, FEB. 10, 2017: 70.166
(Excludes Class 4 and Legal Trail Mileage)

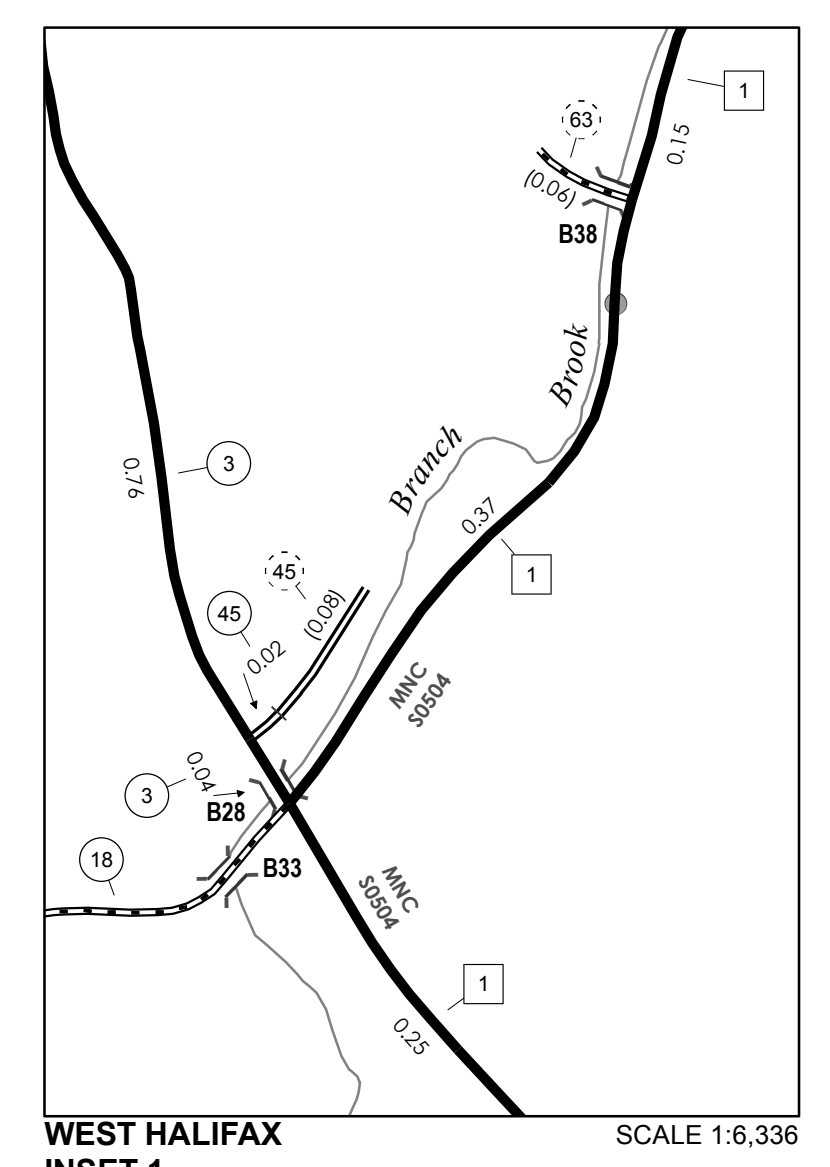
DISCLAIMER:
The untraveled highways (laid-out town highways), discontinued highways, and legal trails hereon are those of which the Agency of Transportation has record; others may exist.

Highway and bridge data by the Agency of Transportation. Town short structures drawn from the Vermont Online Bridge & Culvert Inventory Tool (VOBCIT) database. All other data from the Vermont Center for Geographic Information. Only named streams shown.

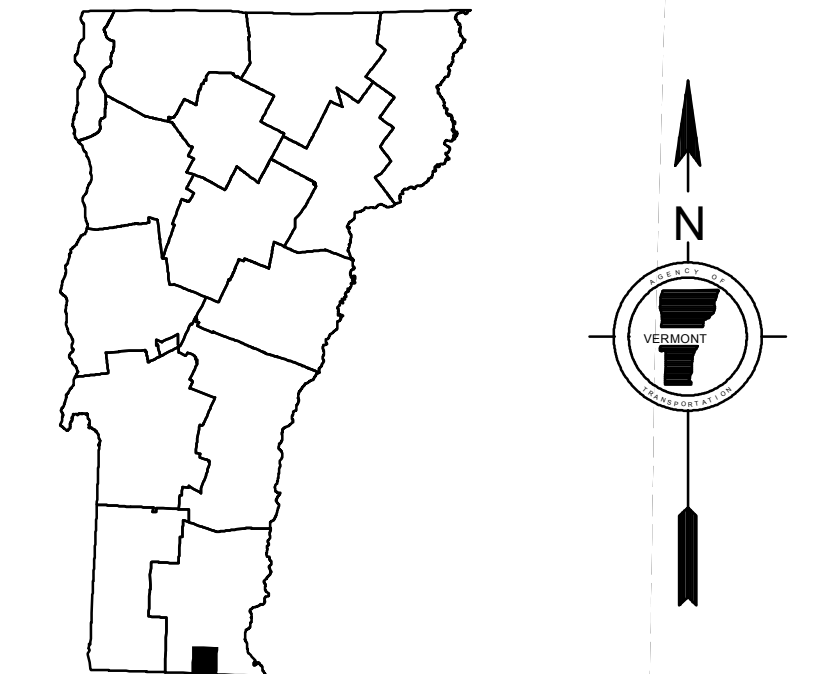
- HIGHWAYS**
- INTERSTATE
- U.S. ROUTE
- STATE ROUTE
- CLASS 1
- CLASS 2
- CLASS 3
- CLASS 4
- LEGAL TRAIL
- PARK AND RIDE
- INTERSTATE OR DIVIDED HIGHWAY
- STATE - HARD SURFACE OR PAVED
- TOWN - HARD SURFACE OR PAVED
- GRAVEL
- SOIL OR GRADED AND DRAINED EARTH
- UNIMPROVED OR PRIMITIVE
- IMPASSABLE OR UNTRAVELED
- LEGAL TRAIL
- DISCONTINUED
- HIGHWAY CLASS CHANGE
- RAILROAD
- INACTIVE RAILROAD
- PUBLIC LAND - NATIONAL FOREST
- PUBLIC LAND - STATE/MUNICIPAL
- NFR NATIONAL FOREST ROAD
- SFH STATE FOREST HIGHWAY
- POLITICAL SUBDIVISIONS**
- STATE BOUNDARY
- COUNTY BOUNDARY
- TOWN BOUNDARY
- VILLAGE BOUNDARY
- URBAN COMPACT BOUNDARY
- WATER BODY
- STREAM OR BROOK
- BRIDGE OR CULVERT**
- BRIDGE OR CULVERT > 20'
- BRIDGE OR CULVERT 6' - 20'
- BIKE PATH STRUCTURE
- VOBCIT BRIDGE
- VOBCIT CULVERT > 6'
- FEDERAL CLASSIFICATION IDENTIFIER**
- MA MINOR ARTERIAL
- MJC MAJOR COLLECTOR
- MNC MINOR COLLECTOR
- PA PRINCIPAL ARTERIAL
- B34 / C34 STATE BRIDGE OR CULVERT IDENTIFIER
- B34 / C34 TOWN BRIDGE OR CULVERT IDENTIFIER



0 0.08 0.16 Miles



0 0.08 0.16 Miles



VERMONT GENERAL HIGHWAY MAP

Town of Halifax

WINDHAM COUNTY

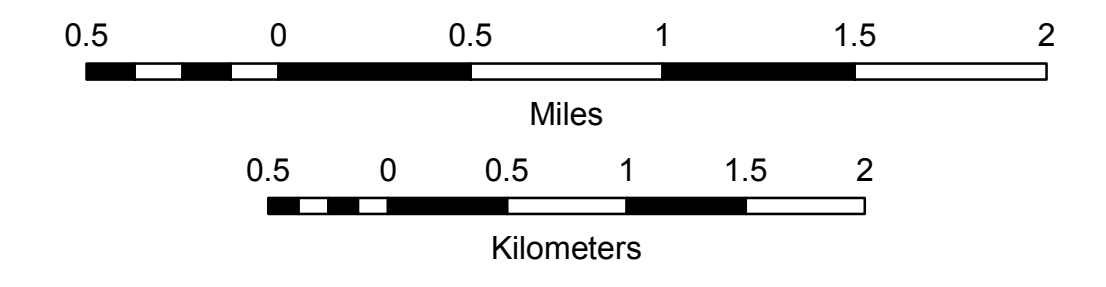
Transportation District #2

Prepared by the Vermont Agency of Transportation
Division of Policy, Planning and Intermodal Development
in cooperation with

U.S. Department of Transportation
Federal Highway Administration

Mileage as of February 10, 2017
Map prepared June 23, 2017

SCALE 1:31,680



Vermont State Plane Coordinate System
North American Datum of 1983
SPCS_Zone_Identifier: 4400
Geodetic Reference System 80
4,000-meter grid, Easting - Northing