

TOWN HWY. No.	LENGTH IN MILES CLASS 3	LENGTH IN MILES CLASS 4
3	2.49	
4	2.70	
5	1.75	
6	0.22	(0.07)
7	0.48	
8	0.60	
9	0.87	
10	0.45	
11	0.44	
12	2.50	
13	0.90	
14	0.36	
15	0.19	
16	1.02	
17	0.28	(0.50)
18	2.71	
19	0.32	
20	0.28	
21	1.20	(0.40)
22	2.10	(0.07)
23	0.11	
24	4.68	(0.07)
25	0.63	
26	0.30	(0.10)
27	1.10	
28	0.80	
29	0.90	
30	2.30	
32	2.19	
33	1.04	
34	1.16	
35	0.52	
36	1.10	
37	1.76	
38		(1.10)
39	1.17	
40	0.28	
41	0.29	
42	0.45	
43	1.18	
44	0.59	(0.37)
45	0.02	(0.08)
46	0.40	
47	0.34	(0.02)
48	0.05	(0.05)
50	0.65	(0.89)
51	0.25	
52	0.13	(1.54)
53	0.10	
54	0.20	
55	0.31	
58	0.37	
60	0.14	
61	0.07	
62	0.04	
63		(0.06)
<b>TOTAL</b>	<b>47.52</b>	<b>5.25</b>

TOWN HWY. No.	LENGTH IN MILES "NOT UP TO STANDARD"
31	(0.15)
<b>TOTAL</b>	<b>0.15</b>

\*The sections of the town highways listed above are legally Class 3, but have been deemed "Not Up To Standard" and are functionally Class 4 Town Highways

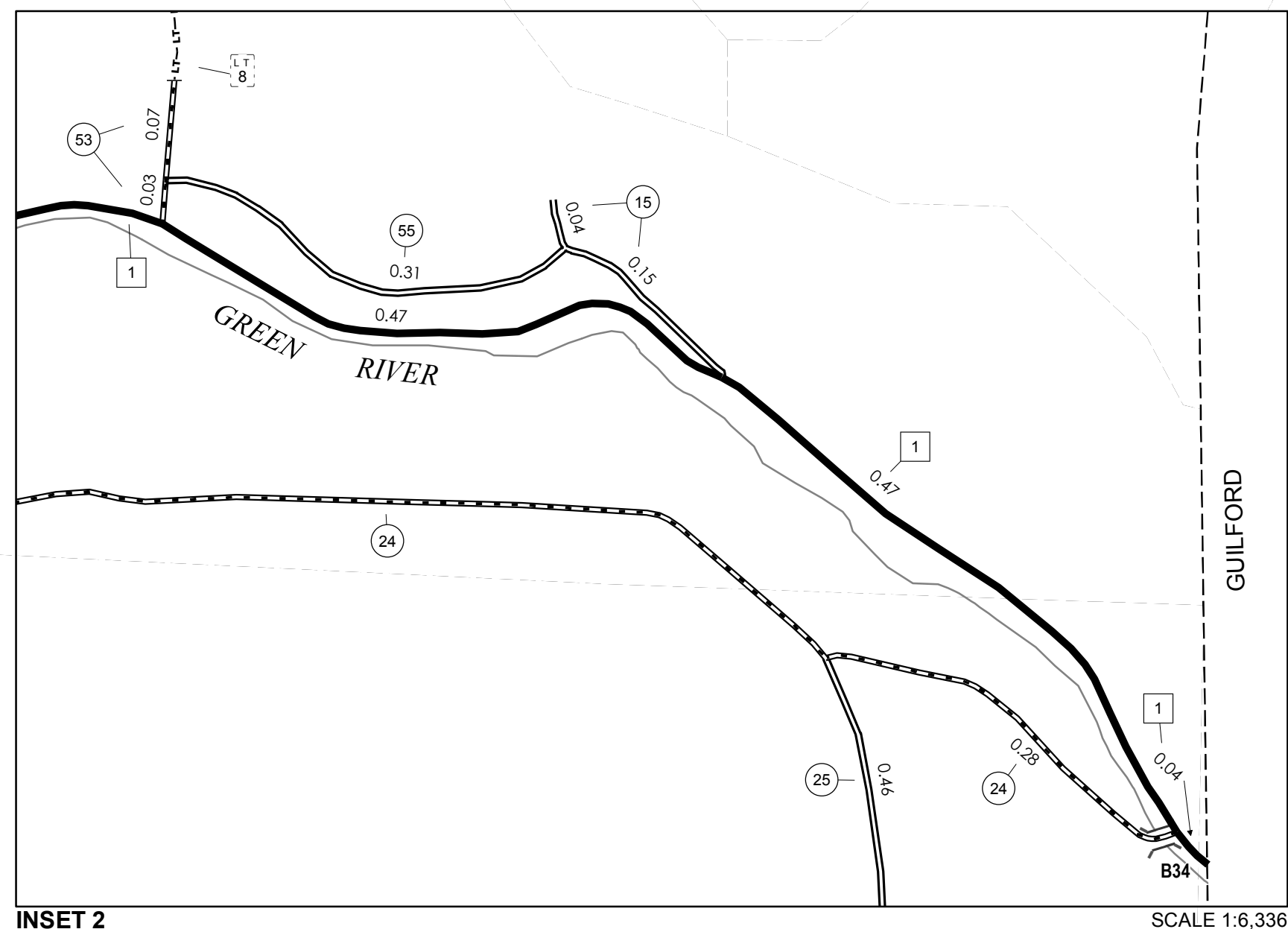
LEGAL TRAIL No.	LENGTH IN MILES LEGAL TRAIL
1	(0.15)
2	(0.90)
3	(0.10)
4	(0.85)
5	(1.10)
6	(0.75)
7	(0.89)
8	(1.25)
11	(1.00)
12	(1.40)
13	(0.38)
14	(1.00)
15	(0.50)
<b>TOTAL</b>	<b>10.27</b>

MILEAGE SUMMARY		
CLASS 2		
TH-1	9.860	
TH-2	6.940	
<b>TOTAL CLASS 2</b>	<b>16.800</b>	
CLASS 3		
<b>TOTAL CLASS 3</b>	<b>47.52</b>	
<b>TOTAL TOWN</b>	<b>64.320</b>	
STATE HIGHWAY		
VT-112	5.846	
<b>TOTAL STATE HIGHWAY</b>	<b>5.846</b>	
<b>TOTAL STATE</b>	<b>5.846</b>	

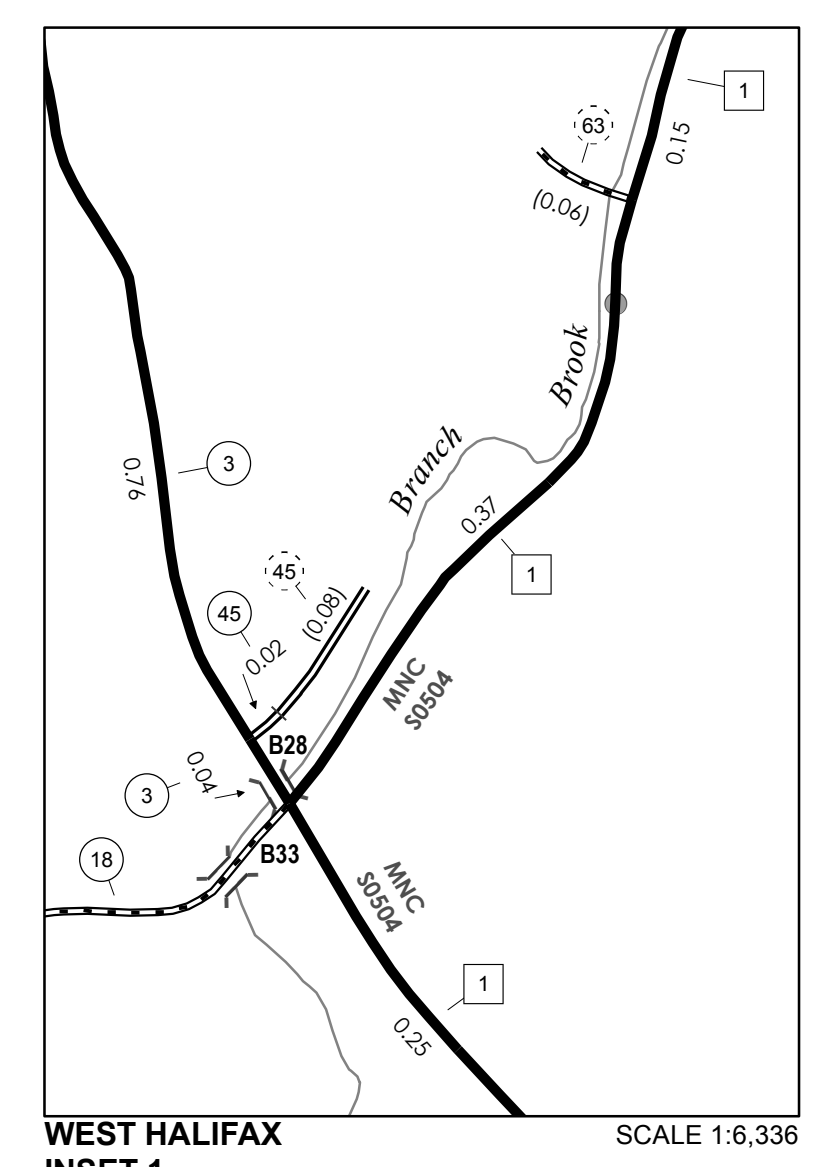
**TOTAL, TRAVELED HIGHWAYS, FEB. 10, 2016: 70.166**  
(Excludes Class 4 and Legal Trail Mileage)

**DISCLAIMER:**  
The untraveled highways (laid-out town highways), discontinued highways, and legal trails herein are those of which the Agency of Transportation has record; others may exist.  
  
Highway and bridge data by the Agency of Transportation. Town short structures are drawn from the Vermont Online Bridge & Culvert Inventory Tool (VOBCIT) database. All other data from the Vermont Center for Geographic Information. Only named streams are shown.

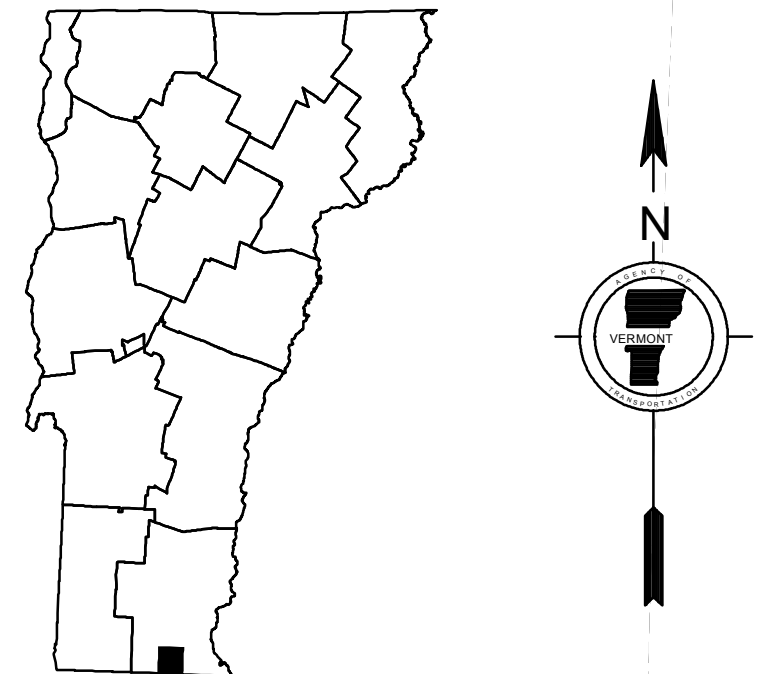
WILMINGTON MARLBORO BRATTLEBORO  
WHITINGHAM WEST HALIFAX INSET 1 HALIFAX INSET 2 GUILFORD  
MASSACHUSETTS



0 0.08 0.16 Miles



0 0.08 0.16 Miles



**VERMONT GENERAL HIGHWAY MAP**

**Town of Halifax**

WINDHAM COUNTY

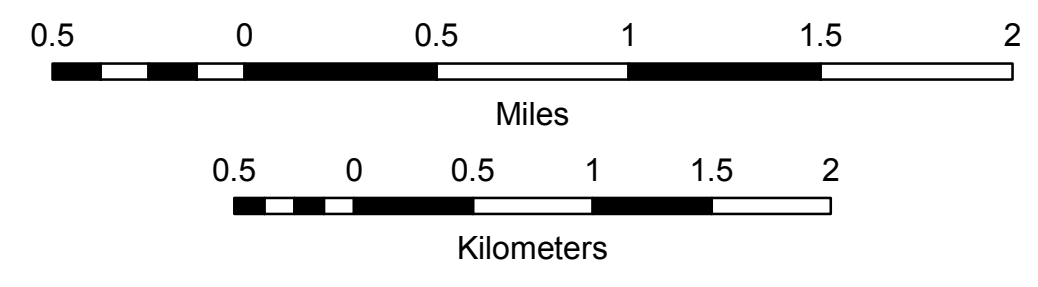
Transportation District #2

Prepared by the Vermont Agency of Transportation  
Division of Policy, Planning and Intermodal Development  
in cooperation with

U.S. Department of Transportation  
Federal Highway Administration

Mileage as of February 10, 2016  
Map prepared July 20, 2016

SCALE 1:31,680



Vermont State Plane Coordinate System  
North American Datum of 1983  
SPCS\_Zone\_Identifier: 4400  
Geodetic Reference System 80  
4,000-meter grid, Easting - Northing