

TOWN HWY. No.	LENGTH IN MILES CLASS 3	LENGTH IN MILES CLASS 4
3	2.49	
4	2.70	
5	1.75	
6	0.22	(0.07)
7	0.48	
8	0.60	
9	0.87	
10	0.45	
11	0.44	
12	2.50	
13	0.90	
14	0.36	
15	0.19	
16	1.02	
17	0.28	(0.50)
18	2.71	
19	0.32	
20	0.28	
21	1.20	
22	2.10	
23	0.11	(0.07)
24	4.68	
25	0.63	(1.00)
26	0.30	(0.10)
27	1.10	
28	0.88	
29	0.90	
30	2.30	
32	2.19	
33	1.04	
34	1.16	
35	0.52	
36	1.10	
37	1.76	
38		(1.10)
39	1.17	
40	0.28	
41	0.29	
42	0.45	
43	1.18	
44	0.59	(0.37)
45	0.02	(0.08)
46	0.40	
47	0.34	(0.02)
48		(0.05)
50	0.65	(0.89)
51	0.25	
52	0.13	(1.54)
53	0.10	
54	0.20	
55	0.31	
58	0.37	
60	0.14	
61	0.07	
62		(0.04)
63		(0.06)
TOTAL	47.48	5.89

TOWN HWY. No.	LENGTH IN MILES "NOT UP TO STANDARD"
21	(0.40)
29	(0.50)
31	(0.15)
TOTAL	1.05

* The sections of the town highways listed above are legally Class 3, but have been deemed "Not Up To Standard" and are functionally Class 4 Town Highways

LEGAL TRAIL No.	LENGTH IN MILES LEGAL TRAIL
1	(0.15)
2	(0.90)
3	(0.10)
4	(0.85)
5	(1.10)
6	(0.75)
7	(0.89)
8	(1.25)
11	(1.00)
12	(1.40)
13	(0.38)
TOTAL	8.77

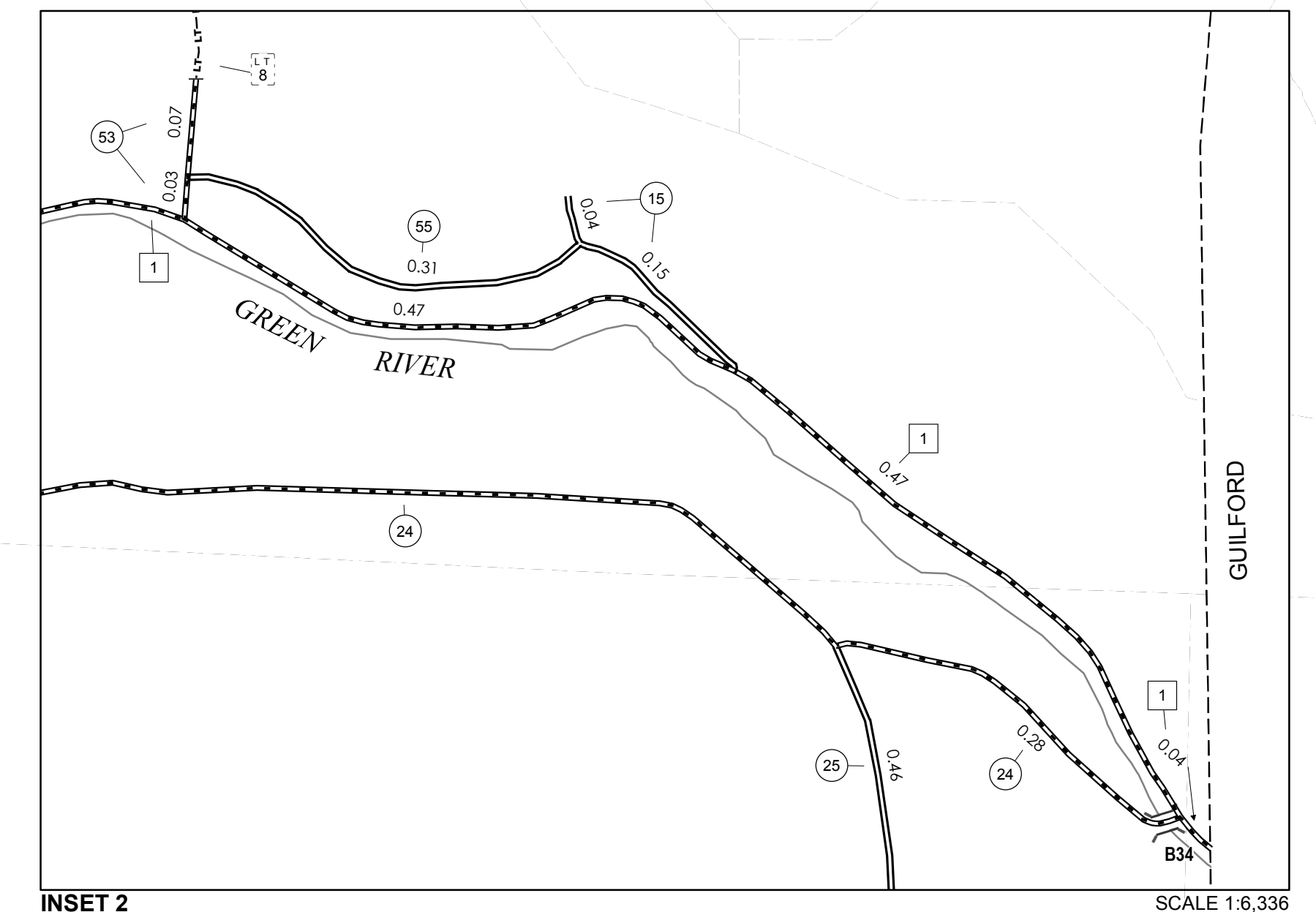
MILEAGE SUMMARY		
CLASS 2		
TH-1	9.860	
TH-2	6.940	
TOTAL CLASS 2		16.800
CLASS 3		
TOTAL CLASS 3		47.48
TOTAL TOWN		64.280
STATE HIGHWAY		
VT-112	5.846	
TOTAL STATE HIGHWAY	5.846	
TOTAL STATE		5.846

TOTAL, TRAVELED HIGHWAYS, FEB. 10, 2015: 70.126
(Excludes Class 4, Legal Trail, and Unidentified Corridor Mileage)

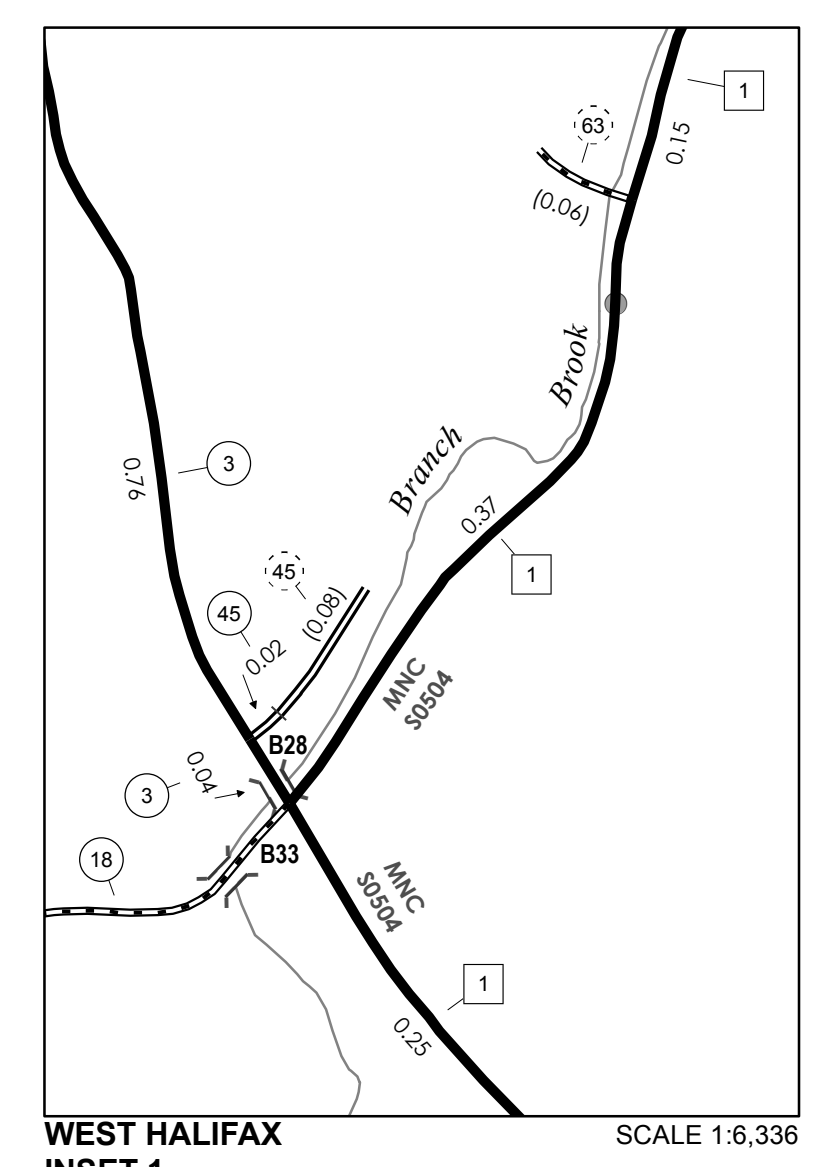
DISCLAIMER:
The untraveled highways (laid-out town highways), discontinued highways, and legal trails herein are those of which the Agency of Transportation has record; others may exist.

Highway and bridge data by the Agency of Transportation. Town short structures are drawn from the Vermont Online Bridge & Culvert Inventory Tool (VOBCIT) database. All other data from the Vermont Center for Geographic Information. Only named streams are shown.

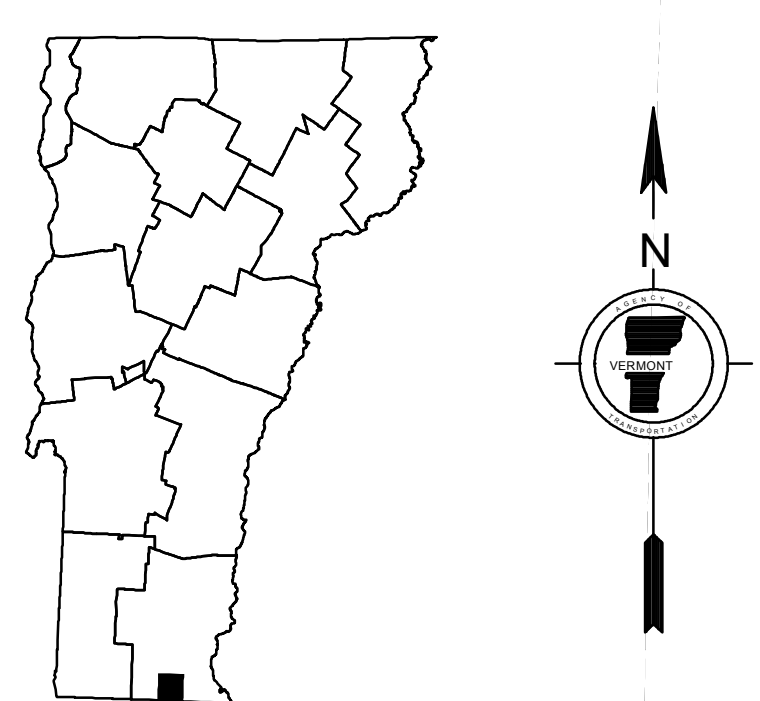
- HIGHWAYS**
- INTERSTATE
 - U.S. ROUTE
 - STATE ROUTE
 - CLASS 1
 - CLASS 2
 - CLASS 3
 - CLASS 4
 - LEGAL TRAIL
- INTERSTATE OR DIVIDED HIGHWAY**
- STATE - HARD SURFACE OR PAVED
 - TOWN - HARD SURFACE OR PAVED
 - SOIL OR GRADED AND DRAINED EARTH
 - UNIMPROVED OR PRIMITIVE
 - IMPASSABLE OR UNTRAVELED
 - LEGAL TRAIL
 - DISCONTINUED
 - HIGHWAY CLASS CHANGE
 - RAILROAD
 - INACTIVE RAILROAD
 - NFR NATIONAL FOREST ROAD
 - SFH STATE FOREST HIGHWAY
 - P PARK AND RIDE
- PUBLIC LAND - GREEN MOUNTAIN NATIONAL FOREST**
- PUBLIC LAND - STATE/MUNICIPAL
- POLITICAL SUBDIVISIONS**
- STATE BOUNDARY
 - COUNTY BOUNDARY
 - TOWN BOUNDARY
 - VILLAGE BOUNDARY
 - URBAN COMPACT BOUNDARY
- BRIDGE OR CULVERT**
- BRIDGE OR CULVERT > 20'
 - BRIDGE OR CULVERT 6' - 20'
 - VOBCIT BRIDGE
 - VOBCIT CULVERT > 6'
 - B34 / C34 STATE BRIDGE OR CULVERT IDENTIFIER
 - B34 / C34 TOWN BRIDGE OR CULVERT IDENTIFIER
- FEDERAL CLASSIFICATION IDENTIFIER**
- FAU URBAN ARTERIAL OR COLLECTOR
 - MA MINOR ARTERIAL
 - MJC MAJOR COLLECTOR
 - MNC MINOR COLLECTOR
 - PA PRINCIPAL ARTERIAL



0 0.08 0.16 Miles



0 0.08 0.16 Miles



VERMONT GENERAL HIGHWAY MAP

Town of Halifax

WINDHAM COUNTY

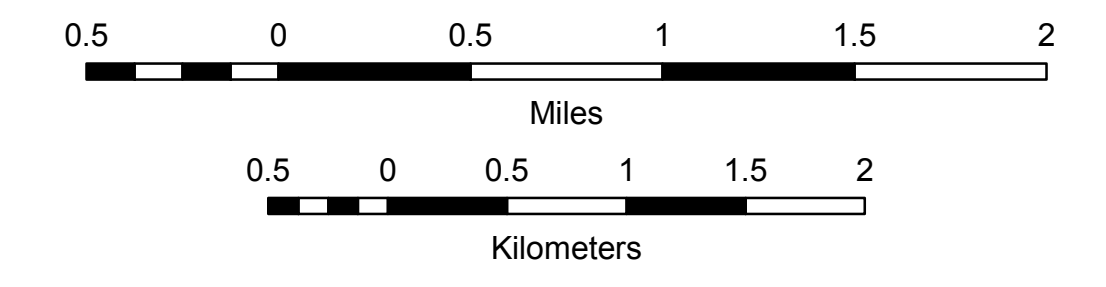
Transportation District #2

Prepared by the
Vermont Agency of Transportation
Division of Policy, Planning and Intermodal Development
in cooperation with

U.S. Department of Transportation
Federal Highway Administration

Mileage as of February 10, 2015
Map prepared June 10, 2015

SCALE 1:31,680



Vermont State Plane Coordinate System
North American Datum of 1983
SPCS_Zone_Identifier: 4400
Geodetic Reference System 80
4,000-meter grid, Easting - Northing