

TOWN HWY. No.	LENGTH IN MILES CLASS 3	CLASS 4
3	2.49	
4	2.70	
5	1.75	
6	0.22	(0.07)
7	0.48	
8	0.60	
9	0.87	
10	0.45	
11	0.44	
12	2.50	
13	0.90	
14	0.36	
15	0.19	
16	1.02	
17	0.28	(0.50)
18	2.71	
19	0.32	
20	0.28	
21	1.20	
22	2.10	
23	0.11	(0.07)
24	4.68	
25	0.63	(1.00)
26	0.30	(0.10)
27	1.10	
28	0.89	
29	0.90	
30	2.30	
32	2.19	
33	1.04	
34	1.16	
35	0.52	
36	1.10	
37	1.76	
38		
39	1.17	(1.10)
40	0.28	
41	0.29	
42	0.45	
43	1.18	
44	0.59	(0.37)
45	0.02	(0.08)
46	0.40	
47	0.34	(0.02)
48		(0.05)
50	0.65	(0.89)
51	0.25	
52	0.13	(1.54)
53	0.10	
54	0.20	
55	0.31	
58	0.37	
60	0.14	
61	0.07	
62		(0.04)
63		(0.06)
TOTAL	47.48	5.89

TOWN HWY. No.	LENGTH IN MILES "NOT UP TO STANDARD"
21	(0.40)
29	(0.50)
31	(0.15)
TOTAL	1.05

* The sections of the town highways listed above are legally Class 3, but have been deemed "Not Up To Standard" and are functionally Class 4 Town Highways

LEGAL TRAIL No.	LENGTH IN MILES LEGAL TRAIL
1	(0.15)
2	(0.90)
3	(0.10)
4	(0.85)
5	(1.10)
6	(0.75)
7	(0.89)
8	(1.25)
11	(1.00)
12	(1.40)
13	(0.38)
TOTAL	8.77

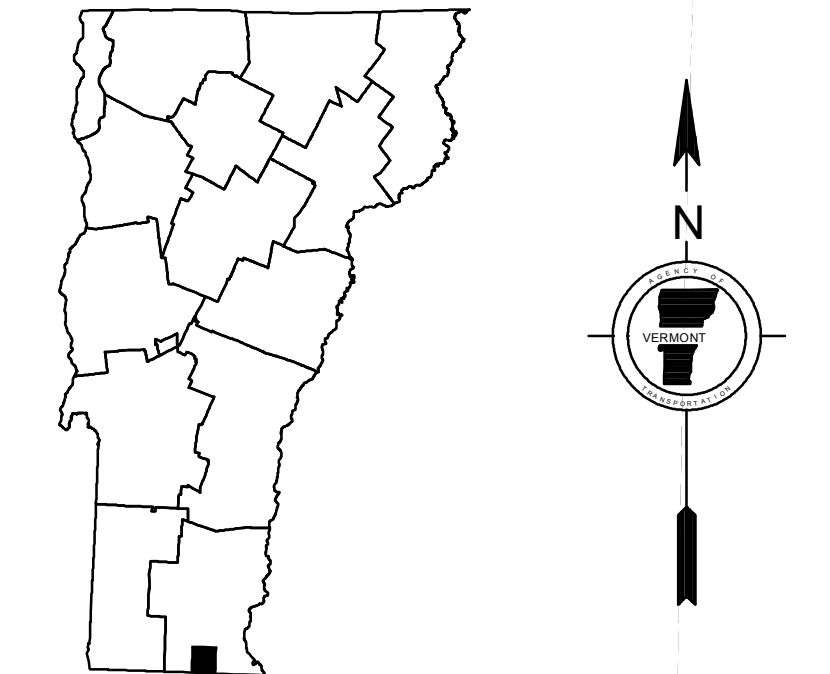
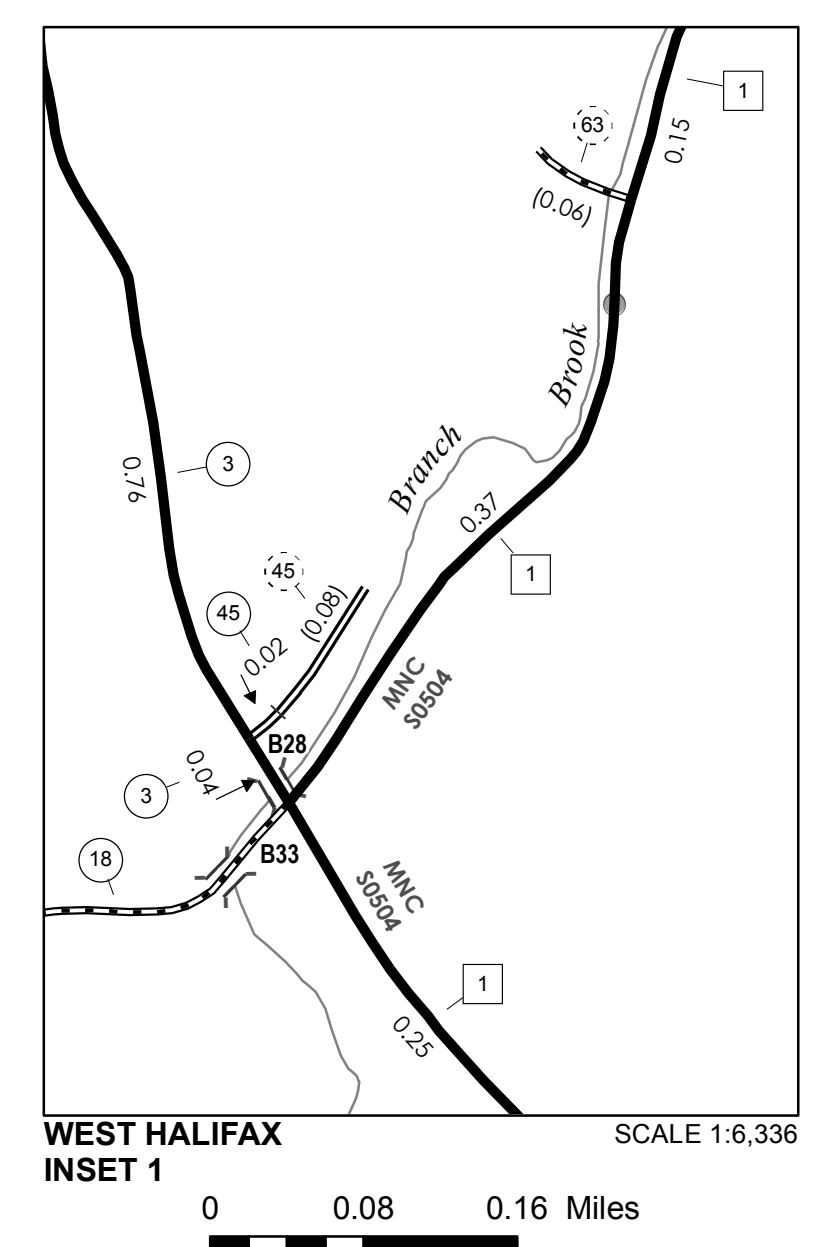
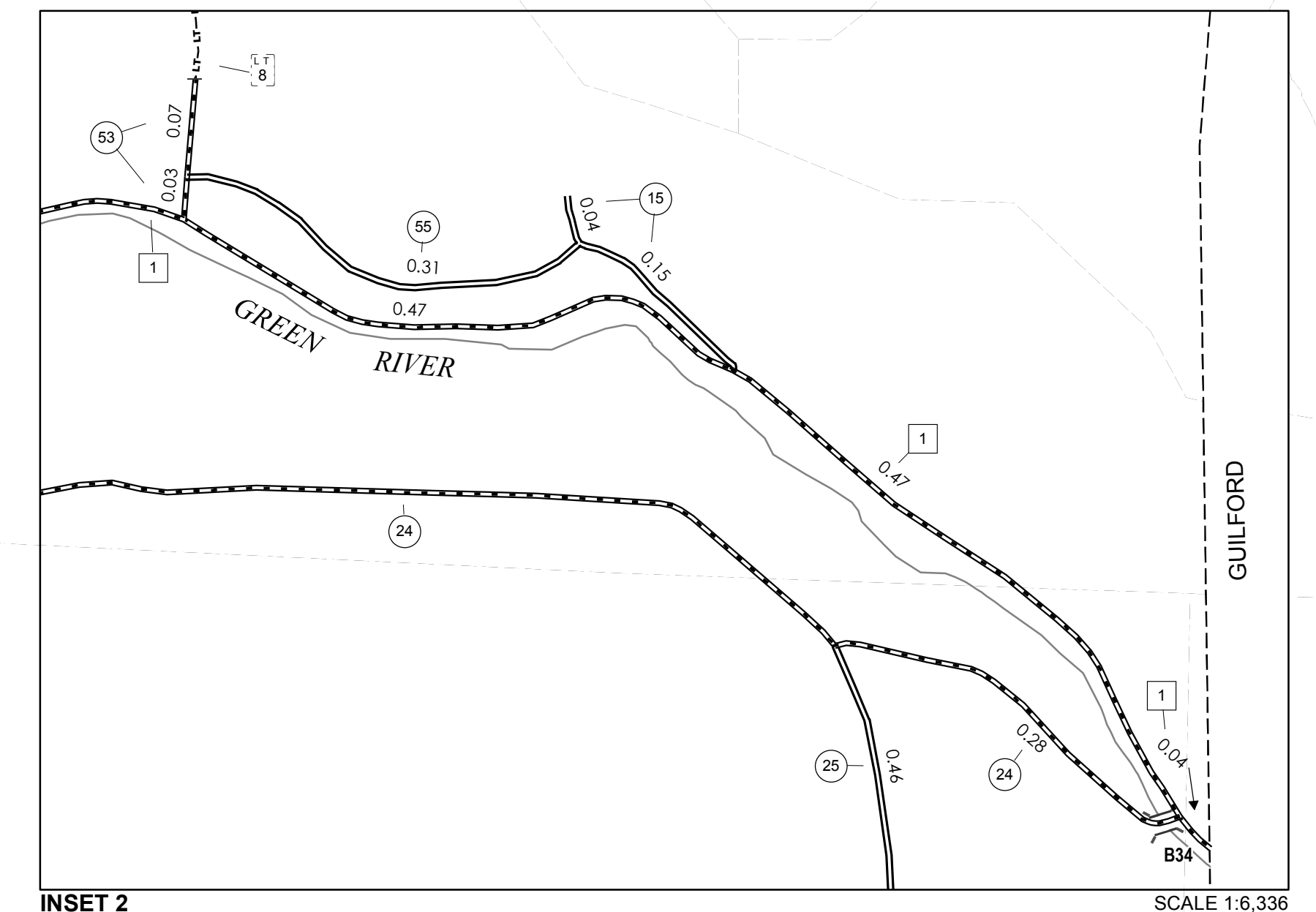
MILEAGE SUMMARY			
CLASS 2			
TH-1	9.860		
TH-2	6.940		
	TOTAL CLASS 2		16.800
CLASS 3			
	TOTAL CLASS 3		47.48
	TOTAL TOWN		64.280
STATE HIGHWAY			
VT-112	5.846		
	TOTAL STATE HIGHWAY		5.846
	TOTAL STATE		5.846

TOTAL, TRAVELED HIGHWAYS, FEB. 10, 2014: 70.126
(Excludes Class 4, Legal Trail, and Unidentified Corridor Mileage)

DISCLAIMER:
The untraveled highways (laid-out town highways), discontinued highways, and legal trails herein are those of which the Agency of Transportation has record; others may exist.

Highway and bridge data by the Agency of Transportation. Town short structures are drawn from the Vermont Online Bridge & Culvert Inventory Tool (VOBCIT) database. All other data from the Vermont Center for Geographic Information. Only named streams are shown.

- HIGHWAYS**
- INTERSTATE OR DIVIDED HIGHWAY
 - STATE - HARD SURFACE OR PAVED
 - TOWN - HARD SURFACE OR PAVED
 - GRAVEL
 - SOIL OR GRADED AND DRAINED EARTH
 - UNIMPROVED OR PRIMITIVE
 - IMPASSABLE OR UNTRAVELED
 - LEGAL TRAIL
 - DISCONTINUED
 - HIGHWAY CLASS CHANGE
 - RAILROAD
 - INACTIVE RAILROAD
 - NATIONAL FOREST ROAD
 - STATE FOREST HIGHWAY
 - PARK AND RIDE
- POLITICAL SUBDIVISIONS**
- STATE BOUNDARY
 - COUNTY BOUNDARY
 - TOWN BOUNDARY
 - VILLAGE BOUNDARY
 - URBAN COMPACT BOUNDARY
- BRIDGE OR CULVERT**
- BRIDGE OR CULVERT > 20'
 - BRIDGE OR CULVERT 6' - 20'
 - VOB/CIT BRIDGE
 - VOB/CIT CULVERT > 6'
- FEDERAL CLASSIFICATION IDENTIFIER**
- FAU - URBAN ARTERIAL OR COLLECTOR
 - MA - MINOR ARTERIAL
 - MJC - MAJOR COLLECTOR
 - MNC - MINOR COLLECTOR
 - PA - PRINCIPAL ARTERIAL
- LEGAL TRAIL**
- LEGAL TRAIL
- OTHER FEATURES**
- INTERSTATE OR DIVIDED HIGHWAY
 - STATE - HARD SURFACE OR PAVED
 - TOWN - HARD SURFACE OR PAVED
 - GRAVEL
 - SOIL OR GRADED AND DRAINED EARTH
 - UNIMPROVED OR PRIMITIVE
 - IMPASSABLE OR UNTRAVELED
 - LEGAL TRAIL
 - DISCONTINUED
 - HIGHWAY CLASS CHANGE
 - RAILROAD
 - INACTIVE RAILROAD
 - NATIONAL FOREST ROAD
 - STATE FOREST HIGHWAY
 - PARK AND RIDE
 - PUBLIC LAND - GREEN MOUNTAIN NATIONAL FOREST
 - PUBLIC LAND - STATE/MUNICIPAL
- BRIDGE OR CULVERT IDENTIFIERS**
- B34 / C34 STATE BRIDGE OR CULVERT IDENTIFIER
 - B34 / C34 TOWN BRIDGE OR CULVERT IDENTIFIER



VERMONT
GENERAL HIGHWAY MAP

Town of Halifax
WINDHAM COUNTY
Transportation District #2

Prepared by the
Vermont Agency of Transportation
Division of Policy, Planning and Intermodal Development
in cooperation with
U.S. Department of Transportation
Federal Highway Administration

Mileage as of February 10, 2014
Map prepared October 03, 2014
SCALE 1:31,680

0.5 0 0.5 1 1.5 2
Miles
0.5 0 0.5 1 1.5 2
Kilometers

Vermont State Plane Coordinate System
North American Datum of 1983
SPCS_Zone_Identifier: 4400
Geodetic Reference System 80
4,000-meter grid, Easting - Northing