

TOWN HWY. NO.	LENGTH IN MILES CLASS 3	LENGTH IN MILES CLASS 4	CLASS 3	CLASS 4	
6	2.57		41	0.61	
8	1.14		43	0.58	(0.22)
9	1.29		44	1.40	
10	0.50		45	1.50	(0.47)
11	1.12	(0.25)	46	0.80	
12	0.08	(0.27)	47	3.25	
13	2.51		48	1.16	
14		(0.10)	49	1.95	
15		(0.05)	50	2.01	
16	0.14		51	0.14	
17	0.42		52	0.12	
18	2.21		53	0.05	
19	0.56	(0.43)	54	0.54	(0.46)
20	1.48		55	0.44	(0.16)
23	1.05		56	0.13	
24	0.56		57	0.18	
25	0.40		58	1.09	
26	0.31		59	0.26	
27	1.60		61	0.14	
28	0.96		62	2.49	
29	0.25		64	0.01	
29		(0.01)	65	0.05	
30	1.78		66	0.37	
31	0.50		67	0.91	
33	0.65		69		(0.10)
34	0.15		71	0.04	
35	0.50	(0.26)	71		(0.13)
36	1.15		72		(0.28)
37	2.88		75	0.90	
38	0.25		76	0.18	
39		(0.20)	77	0.26	
40	1.41		78	0.33	
			TOTAL	50.31	3.39

* This portion of town highway is Class 3, but is functionally Class 4

LEGAL TRAIL NO.	LENGTH IN MILES
1	(0.29)
2	(0.25)
TOTAL	0.54

MILEAGE SUMMARY

CLASS 2		
TH-1	4.490	
TH-2	5.480	
TH-3	0.880	
TH-4	0.800	
TH-5	0.060	
TH-6	0.660	
TOTAL CLASS 2	12.370	
CLASS 3		
TOTAL CLASS 3	50.310	
TOTAL TOWN	62.680	
STATE HIGHWAY		
VT-30	5.097	
TOTAL STATE HIGHWAY	5.097	
US HIGHWAY		
US-5	5.287	
TOTAL US HIGHWAY	5.287	
TOTAL STATE	10.384	
INTERSTATE		
I-91	5.392	
TOTAL INTERSTATE	5.392	
INTERSTATE - Ramp		
I-91	0.539	
TOTAL INTERSTATE - Ramp	0.539	
TOTAL INTERSTATE	5.931	

TOTAL, TRAVELED HIGHWAYS, FEB. 10, 2008: 78.995
(Excludes Class 4 and Legal Trail Mileage)

HIGHWAYS	SYMBOL	DESCRIPTION
INTERSTATE	Thick solid line	INTERSTATE OR DIVIDED HIGHWAY
U.S. ROUTE	Double solid line	STATE - HARD SURFACE OR PAVED
STATE ROUTE	Single solid line	TOWN - HARD SURFACE OR PAVED
CLASS 1	Thin solid line	GRAVEL
CLASS 2	Dashed line	SOIL OR GRADED AND DRAINED EARTH
CLASS 3	Dotted line	UNIMPROVED OR PRIMITIVE
CLASS 4	Thin dashed line	IMPASSABLE OR UNTRAVELED
LEGAL TRAIL	Thin solid line with cross-ticks	LEGAL TRAIL
FEDERAL CLASSIFICATION IDENTIFIER		
FAU	Circle with 'A'	URBAN ARTERIAL OR COLLECTOR
MA	Circle with 'M'	MINOR ARTERIAL
MJC	Circle with 'C'	MAJOR COLLECTOR
MNC	Circle with 'N'	MINOR COLLECTOR
PA	Circle with 'P'	PRINCIPAL ARTERIAL

POLITICAL SUBDIVISIONS	SYMBOL	DESCRIPTION
PUBLIC LAND	Stippled area	PUBLIC LAND
STATE BOUNDARY	Thick dashed line	STATE BOUNDARY
COUNTY BOUNDARY	Thin dashed line	COUNTY BOUNDARY
TOWN BOUNDARY	Thin solid line	TOWN BOUNDARY
VILLAGE BOUNDARY	Thin dashed line	VILLAGE BOUNDARY
URBAN COMPACT	Thin solid line	URBAN COMPACT
OPEN WATER	Blue wavy line	OPEN WATER
STREAM OR BROOK	Blue line with cross-ticks	STREAM OR BROOK
BRIDGE OR CULVERT	Double line with cross-ticks	BRIDGE OR CULVERT
BRIDGE OR CULVERT GREATER THAN 20'	Thick double line with cross-ticks	BRIDGE OR CULVERT GREATER THAN 20'
BRIDGE OR CULVERT 6' - 20'	Thin double line with cross-ticks	BRIDGE OR CULVERT 6' - 20'
B34 / C34	Circle with '34'	STATE BRIDGE OR CULVERT IDENTIFIER
B34 / C34	Circle with '34'	TOWN BRIDGE OR CULVERT IDENTIFIER

DISCLAIMER:

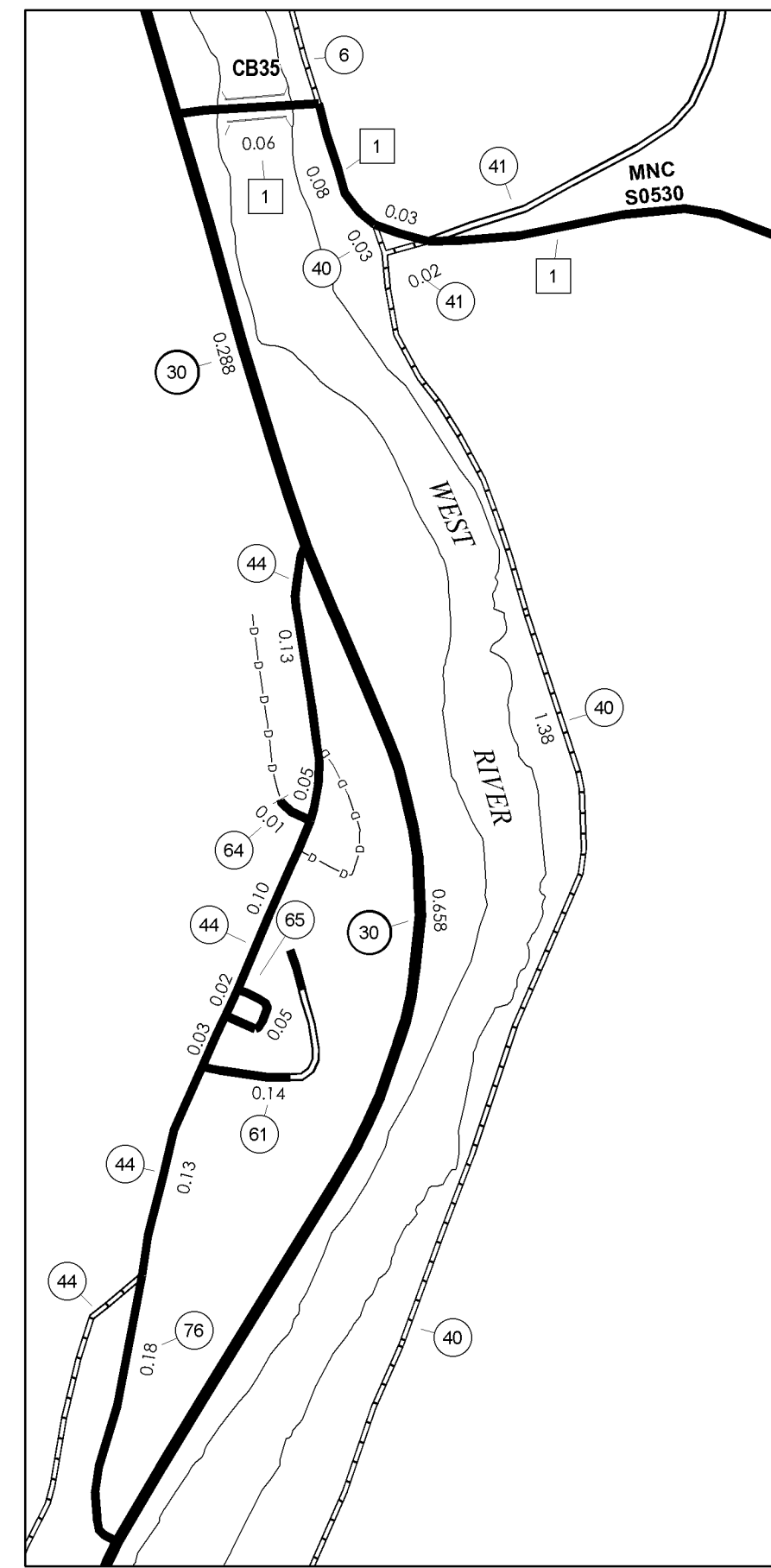
The untraveled highways (laid-out town highways), discontinued highways, and legal trails shown hereon are those of which the Agency of Transportation has record; others may exist.

Highway and bridge data by the Agency of Transportation, Policy & Planning Division. All other data from the Vermont Center for Geographic Information.

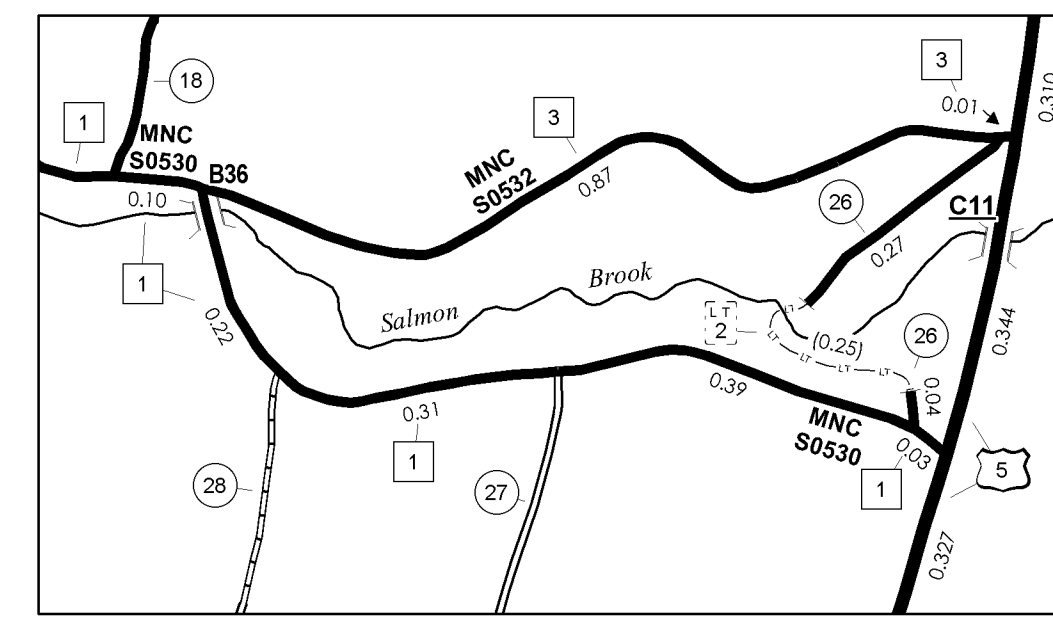
STRUCTURES - SURFACE WATER NOTE:

Town short structures (bridges or culverts from 6-feet to less than 20-feet) were not represented due to inconsistencies in the data.

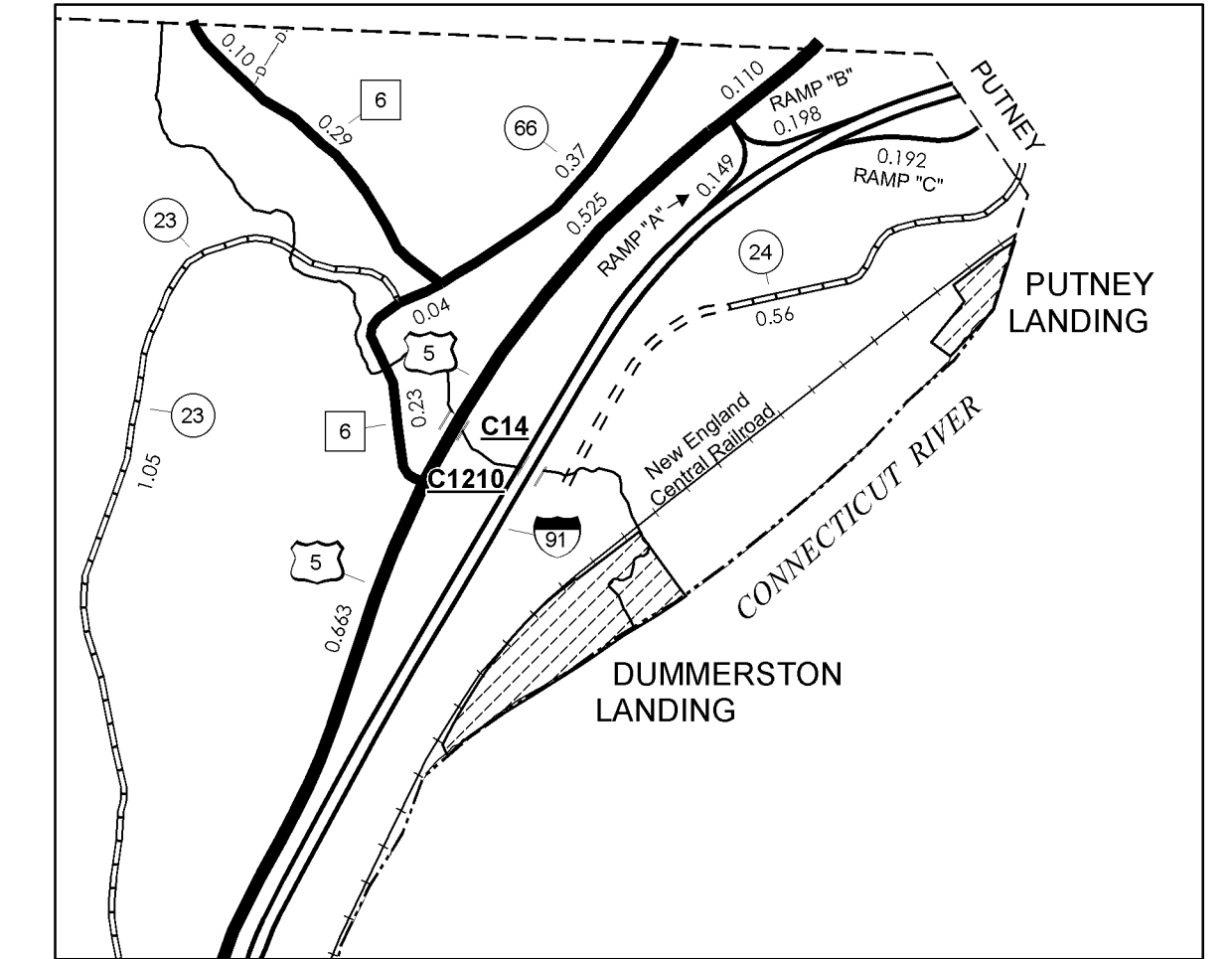
The surface waters are from the Vermont Hydrological Dataset (VHD). Only the named streams are shown.



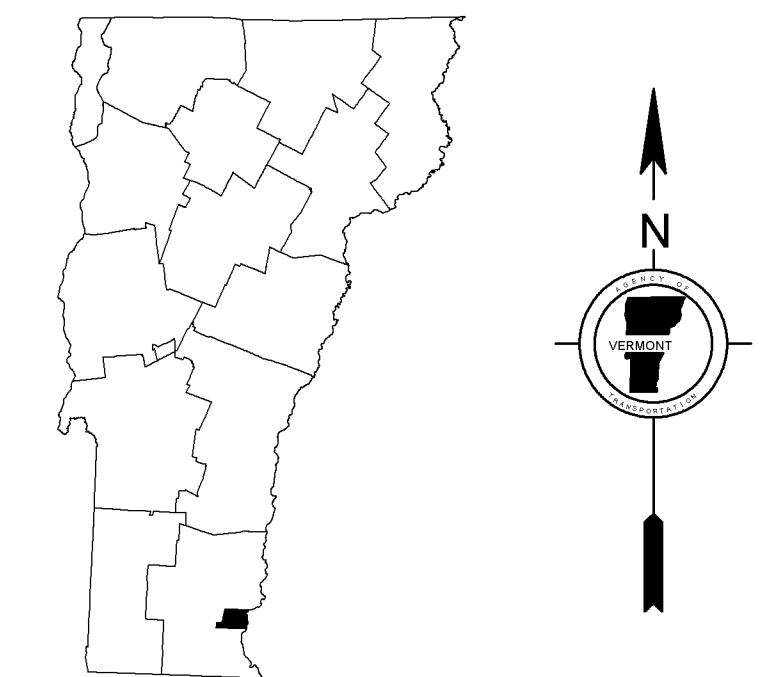
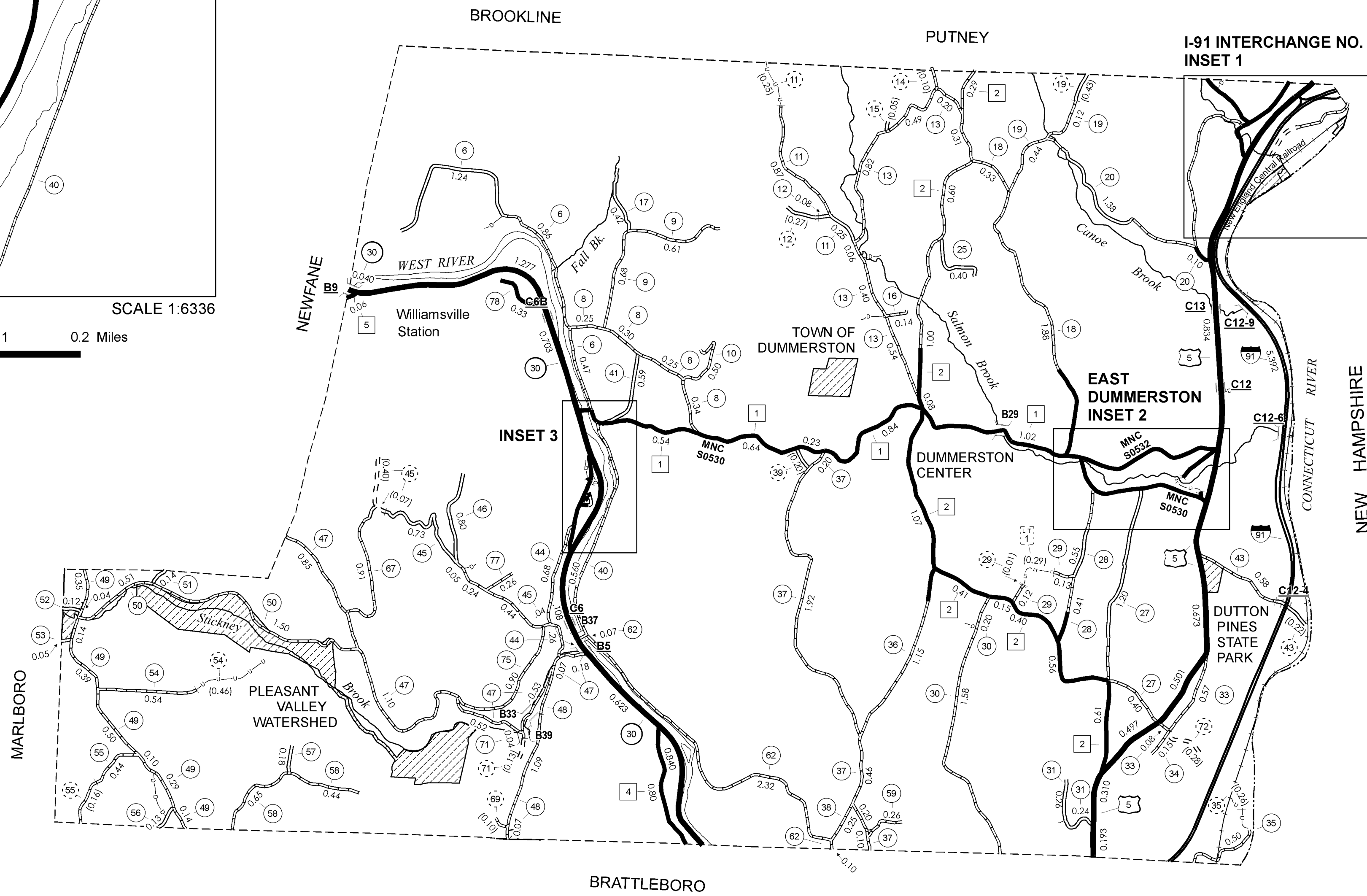
INSET 3 SCALE 1:6336



EAST DUMMERSTON INSET 2 SCALE 1:12672



I-91 INTERCHANGE NO. 4 INSET 1 SCALE 1:12672



VERMONT GENERAL HIGHWAY MAP
Town of Dummerston
WINDHAM COUNTY

Transportation District #2

Prepared by the
Vermont Agency of Transportation
Policy & Planning Division
in cooperation with
U.S. Department of Transportation
Federal Highway Administration

Mileage as of: February 10, 2008
Map generated: September, 2008

SCALE: 1:31680

