

TOWN HWY. No.	LENGTH IN MILES CLASS 3	CLASS 4	TOWN HWY. No.	LENGTH IN MILES CLASS 3	CLASS 4
6	0.05		49	0.16	
7	0.34		50	0.58	
8	3.37		51	0.06	
9	1.80		52	0.25	
10	0.15		53	0.25	
11	0.29		54	0.05	
12	0.33		55	0.22	
13	0.29		56	0.24	
14	0.72	(0.66)	57	0.74	
15	3.83		58	0.31	
16	0.75		59	0.08	
17	0.95		60	0.36	
18	0.54		65	0.97	
19	3.34		66	0.73	
20	0.32		67	0.85	
21	0.95		68	0.75	
22	1.07		69	0.35	
23	1.56		70	0.51	
24	0.60		71	0.71	
25	1.02		72	0.05	
26	1.37		73	0.20	
27	1.02		75	0.12	
28	1.77		76	0.18	
29		(0.85)	77	0.71	
30	0.45		78	0.41	
31	1.56		79	0.77	
33	0.15		81	0.20	
34	0.22		82	0.17	
35	0.06		83	0.22	
38	0.06		84	0.04	
39	0.40	(0.10)	85	0.08	
41	0.40		86	0.03	
42	2.91		87	0.24	
43	0.65		88	0.53	
44	0.28		89	0.20	
45	0.64		90	0.66	
46	0.17		91	0.23	
47	0.37		92		(0.51)
48	0.17		TOTAL	48.13	2.12

TOWN HWY. No.	LENGTH IN MILES "NOT UP TO STANDARD"	LEGAL TRAIL No.	LENGTH IN MILES LEGAL TRAIL
15	(0.53)	2	(0.29)
TOTAL	0.53	3	(0.50)
		4	(2.00)
		5	(2.22)
		6	(1.00)
		7	(0.33)
		8	(0.72)
		9	(0.72)
		10	(0.59)
		11	(0.32)
		12	(1.42)
		13	(0.08)
		14	(0.03)
		15	(0.59)
		16	(0.50)
TOTAL		TOTAL	11.71

MILEAGE SUMMARY

CLASS 2	LENGTH IN MILES	CLASS 3	LENGTH IN MILES
TH-1	4.370		
TH-2	2.000		
TH-3	1.540		
TH-4	1.380		
TH-5	1.090		
TOTAL CLASS 2	10.380		
TOTAL CLASS 3	48.13		
TOTAL TOWN	58.510		
STATE HIGHWAY VT-100	5.547		
TOTAL STATE HIGHWAY	5.547		
TOTAL STATE	5.547		

TOTAL, TRAVELED HIGHWAYS, FEB. 10, 2016: 64.057
(Excludes Class 4 and Legal Trail Mileage)

- HIGHWAYS**
- INTERSTATE
 - U.S. ROUTE
 - STATE ROUTE
 - CLASS 1
 - CLASS 2
 - CLASS 3
 - CLASS 4
 - LEGAL TRAIL
 - INTERSTATE OR DIVIDED HIGHWAY
 - STATE - HARD SURFACE OR PAVED
 - TOWN - HARD SURFACE OR PAVED
 - GRAVEL
 - SOIL OR GRADED AND DRAINED EARTH
 - UNIMPROVED OR PRIMITIVE
 - IMPASSABLE OR UNTRAVELED
 - LEGAL TRAIL
 - DISCONTINUED
 - HIGHWAY CLASS CHANGE
 - RAILROAD
 - INACTIVE RAILROAD
 - NFR NATIONAL FOREST ROAD
 - SFH STATE FOREST HIGHWAY
 - P PARK AND RIDE

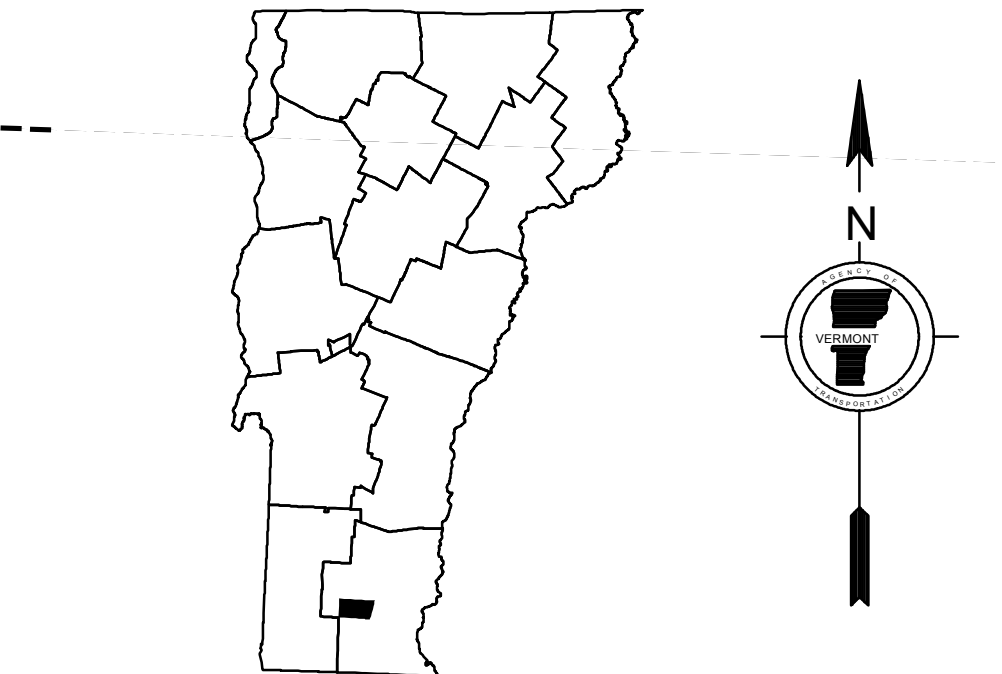
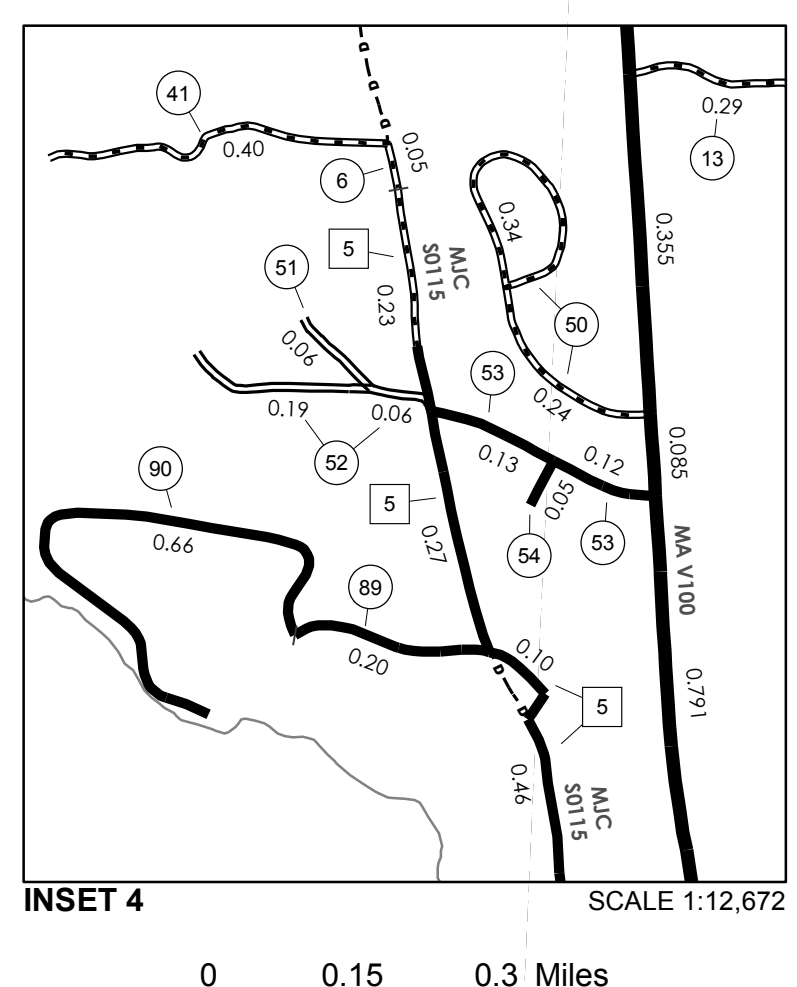
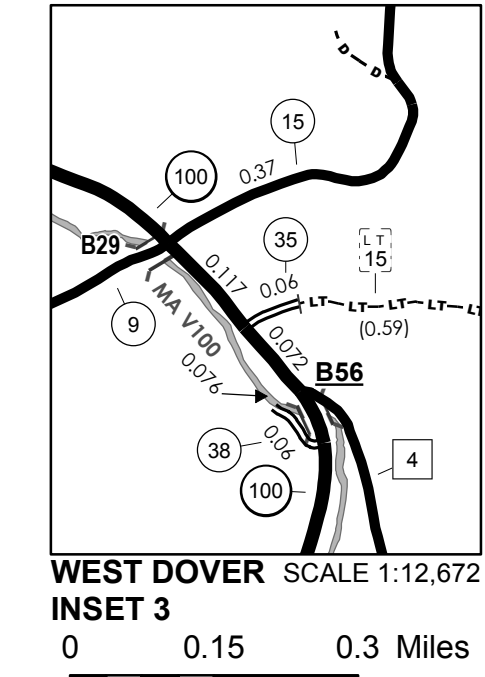
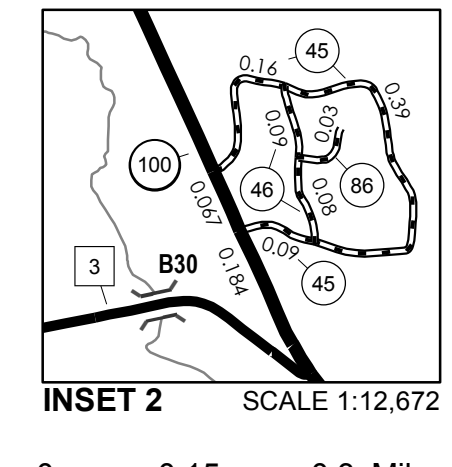
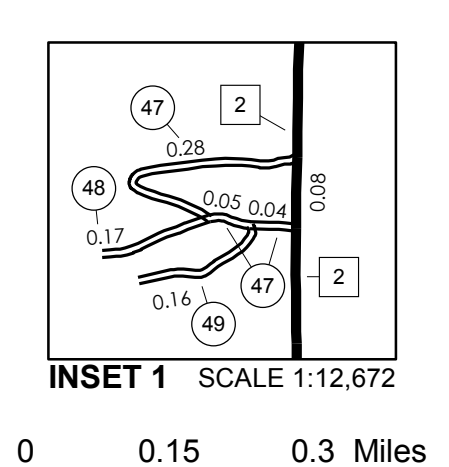
- POLITICAL SUBDIVISIONS**
- STATE BOUNDARY
 - COUNTY BOUNDARY
 - TOWN BOUNDARY
 - VILLAGE BOUNDARY
 - URBAN COMPACT BOUNDARY
 - WATER BODY
 - STREAM OR BROOK
 - PUBLIC LAND - GREEN MOUNTAIN NATIONAL FOREST
 - PUBLIC LAND - STATE/MUNICIPAL
- BRIDGE OR CULVERT**
- BRIDGE OR CULVERT > 20'
 - BRIDGE OR CULVERT 6' - 20'
 - VOBCIT BRIDGE
 - VOBCIT CULVERT > 6'
- B34 / C34 STATE BRIDGE OR CULVERT IDENTIFIER**
B34 / C34 TOWN BRIDGE OR CULVERT IDENTIFIER

- FEDERAL CLASSIFICATION IDENTIFIER**
- FAU URBAN ARTERIAL OR COLLECTOR
 - MA MAJOR ARTERIAL
 - MJC MAJOR COLLECTOR
 - MNC MINOR COLLECTOR
 - PA PRINCIPAL ARTERIAL

DISCLAIMER:
 The untraveled highways (laid-out town highways), discontinued highways, and legal trails hereon are those of which the Agency of Transportation has record; others may exist.

Highway and bridge data by the Agency of Transportation. Town short structures are drawn from the Vermont Online Bridge & Culvert Inventory Tool (VOBCIT) database. All other data from the Vermont Center for Geographic Information. Only named streams are shown.

Vermont State Plane Coordinate System
 North American Datum of 1983
 SPCS_Zone_Identifier: 4400
 Geodetic Reference System 80
 4,000-meter grid, Easting - Northing



VERMONT GENERAL HIGHWAY MAP
Town of Dover
 WINDHAM COUNTY
 Transportation District #1

Prepared by the
 Vermont Agency of Transportation
 Division of Policy, Planning and Intermodal Development
 in cooperation with
 U.S. Department of Transportation
 Federal Highway Administration

Mileage as of February 10, 2016
 Map prepared July 20, 2016
 SCALE 1:25,344

0 0.35 0.7 1.05 1.4 Miles
 0.4 0 0.4 0.8 1.2 1.6 Kilometers