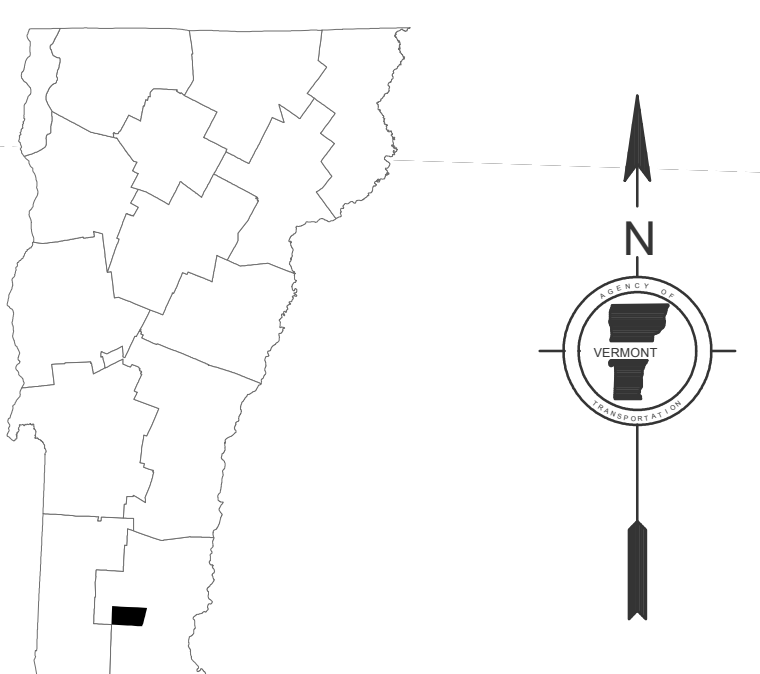
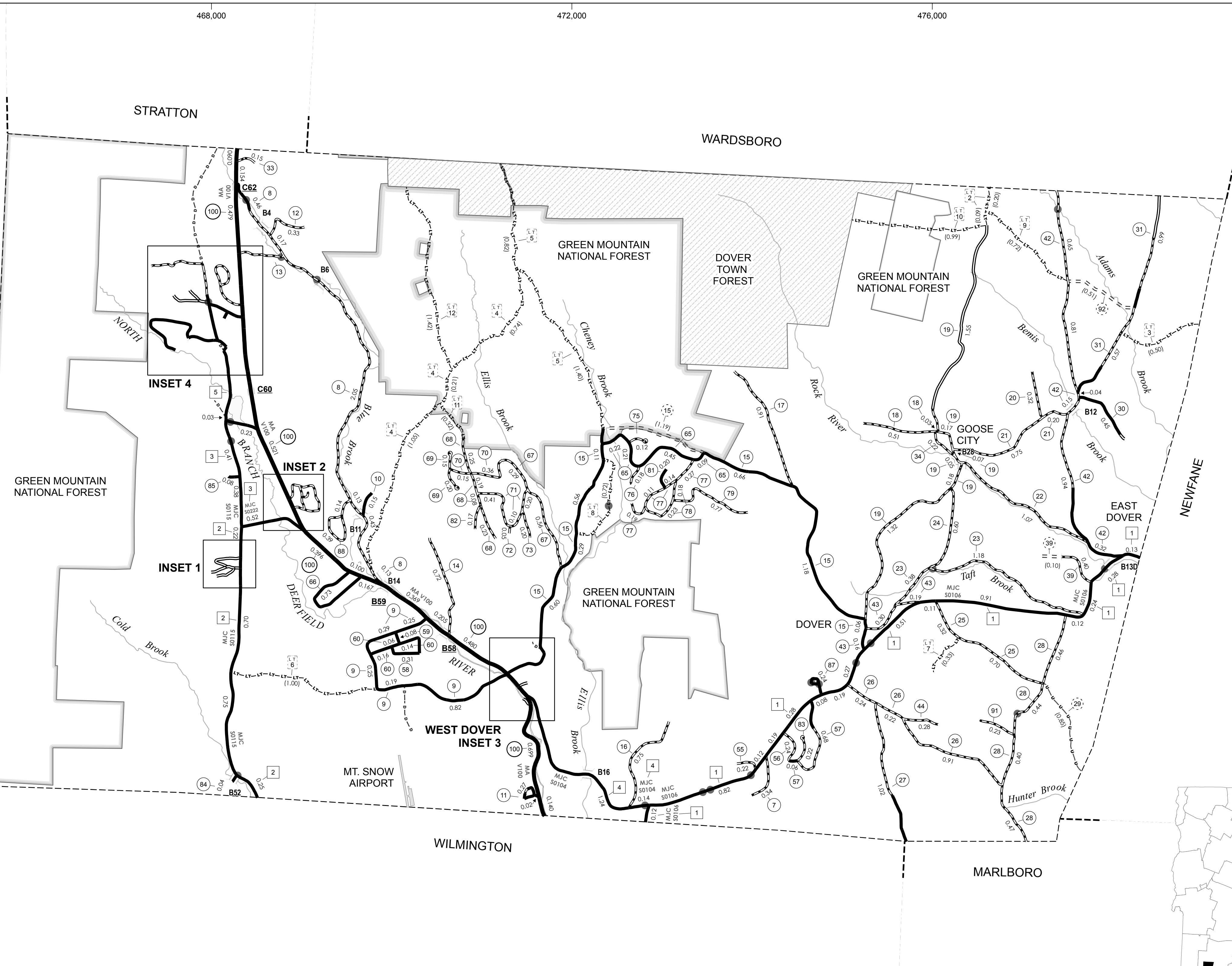


TOWN HWY. NO.	LENGTH IN MILES CLASS 3	LENGTH IN MILES CLASS 4	LEGAL TRAIL NO.	LENGTH IN MILES
6	0.05		2	(0.29)
7	0.34		4	(0.50)
8	3.37		5	(2.00)
9	1.80		6	(2.22)
10	0.15		7	(1.00)
11	0.29		8	(0.33)
12	0.33		9	(0.72)
13	0.29		10	(0.99)
14	0.72		11	(0.32)
15	3.83	(0.66)	12	(1.42)
16	0.75	(0.53)		
17	0.91			
18	0.54			
19	3.34			
20	0.32			
21	0.95			
22	1.07			
23	1.56			
24	0.60			
25	1.02			
26	1.37			
27	1.02			
28	1.77			
29		(0.85)		
30	0.45			
31	1.56			
33	0.15			
34	0.22			
35	0.06			
38	0.06			
39	0.40			
41	0.40	(0.10)		
42	2.91			
43	0.65			
44	0.28			
45	0.64			
46	0.17			
47	0.37			
				(0.51)
<b>TOTAL</b>	<b>48.09</b>	<b>2.65</b>		

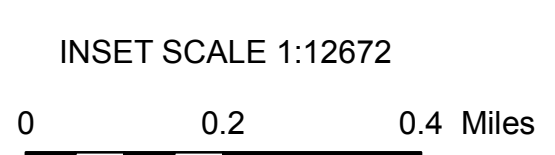
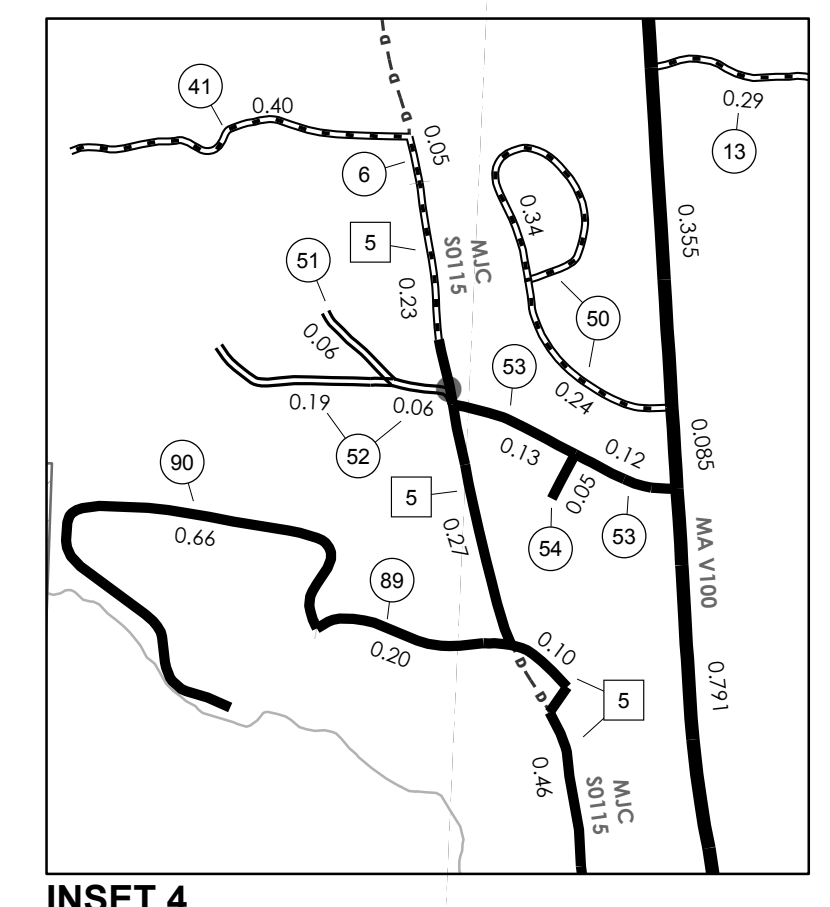
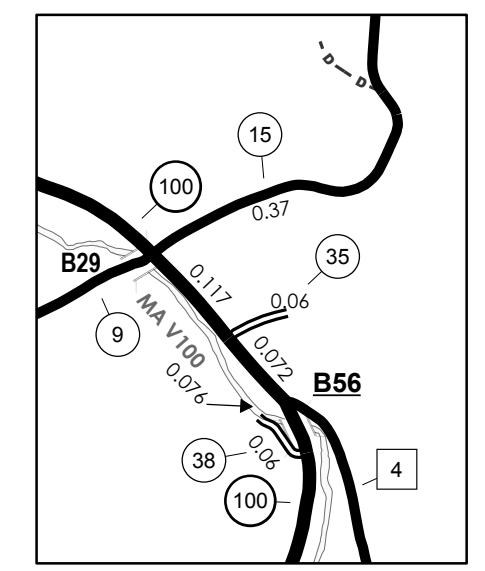
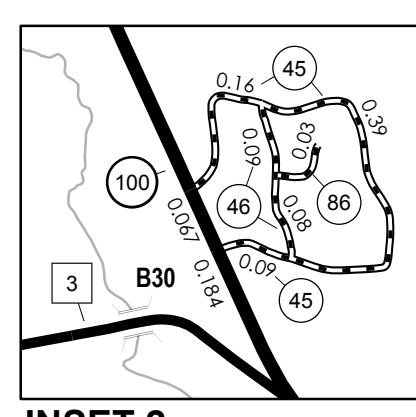
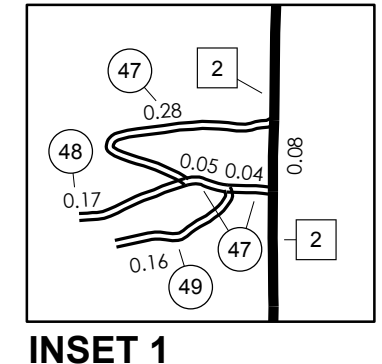
\* This portion of town highway is Class 3, but is functionally Class 4

MILEAGE SUMMARY			
CLASS 2			
TH-1	4.370		
TH-2	2.000		
TH-3	1.540		
TH-4	1.380		
TH-5	1.090		
	<b>TOTAL CLASS 2</b>	<b>10.380</b>	
CLASS 3			
	<b>TOTAL CLASS 3</b>	<b>48.090</b>	
	<b>TOTAL TOWN</b>	<b>58.470</b>	
STATE HIGHWAY			
VT-100	5.547		
	<b>TOTAL STATE HIGHWAY</b>	<b>5.547</b>	
	<b>TOTAL STATE</b>	<b>5.547</b>	

**TOTAL, TRAVELED HIGHWAYS, FEB. 10, 2010: 64.017**  
(Excludes Class 4 and Legal Trail Mileage)



- HIGHWAYS**
  - INTERSTATE OR DIVIDED HIGHWAY
  - STATE - HARD SURFACE OR PAVED
  - TOWN - HARD SURFACE OR PAVED
  - GRAVEL
  - SOIL OR GRADED AND DRAINED EARTH
  - UNIMPROVED OR PRIMITIVE
  - IMPASSABLE OR UNTRAVELED
  - LEGAL TRAIL
  - DISCONTINUED
  - HIGHWAY CLASS CHANGE
  - RAILROAD
- FEDERAL CLASSIFICATION IDENTIFIER**
  - FAU URBAN ARTERIAL OR COLLECTOR
  - MA MINOR ARTERIAL
  - MJC MAJOR COLLECTOR
  - MNC MINOR COLLECTOR
  - PA PRINCIPAL ARTERIAL
- POLITICAL SUBDIVISIONS**
  - STATE BOUNDARY
  - COUNTY BOUNDARY
  - TOWN BOUNDARY
  - VILLAGE BOUNDARY
  - URBAN COMPACT BOUNDARY
  - WATER BODIES
  - STREAM OR BROOK
  - BRIDGE OR CULVERT
    - BRIDGE OR CULVERT GREATER THAN 20'
    - BRIDGE OR CULVERT 6' - 20'
    - TOWN SHORT STRUCTURE
- B34 / C34 STATE BRIDGE OR CULVERT IDENTIFIER**
- B34 / C34 TOWN BRIDGE OR CULVERT IDENTIFIER**



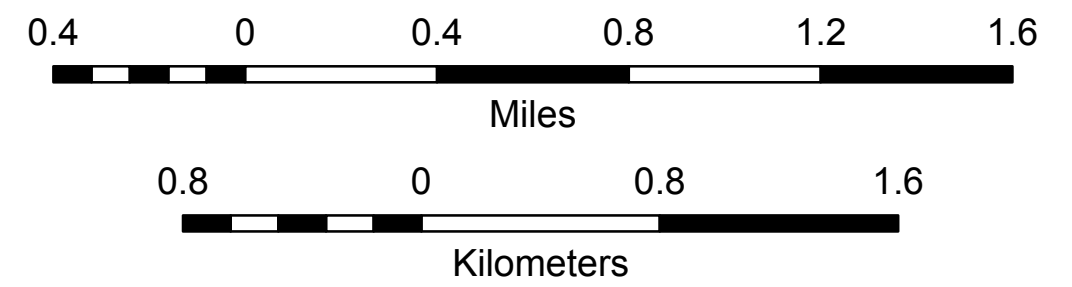
## VERMONT GENERAL HIGHWAY MAP

# Town of Dover

WINDHAM COUNTY  
Transportation District #1  
Prepared by the  
Vermont Agency of Transportation  
Division of Planning, Outreach  
and Community Affairs  
in cooperation with  
U.S. Department of Transportation  
Federal Highway Administration

Mileage as of February 10, 2010  
Map prepared June 10, 2010

SCALE 1:25,344



**STRUCTURES - SURFACE WATER NOTE:**  
STRUCTURES: Town short structures (bridges or culverts from 4-feet to less than 20-feet) are drawn from the Vermont Online Bridge & Culvert Inventory Tool (VOBCIT) database.  
NOTE: Town shorts are not consistently tagged within VOBCIT.  
The surface waters are from the Vermont Hydrological Dataset (VHD). Only the named streams are shown.

**DISCLAIMER:**  
The untraveled highways (laid-out town highways), discontinued highways, and legal trails shown hereon are those of which the Agency of Transportation has record; others may exist.  
Highway and bridge data by the Agency of Transportation. All other data from the Vermont Center for Geographic Information.

Vermont State Plane Coordinate System  
North American Datum of 1983  
SPCS Zone Identifier: 4400  
Geodetic Reference System 80  
4,000-meter grid, Easting - Northing