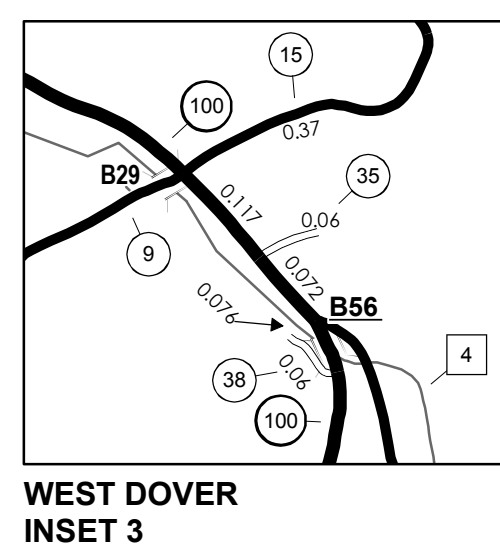
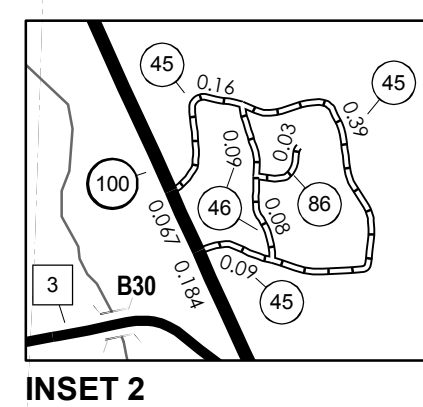
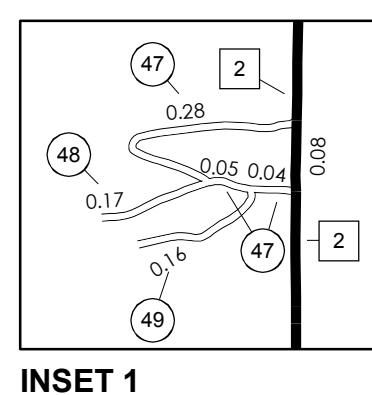
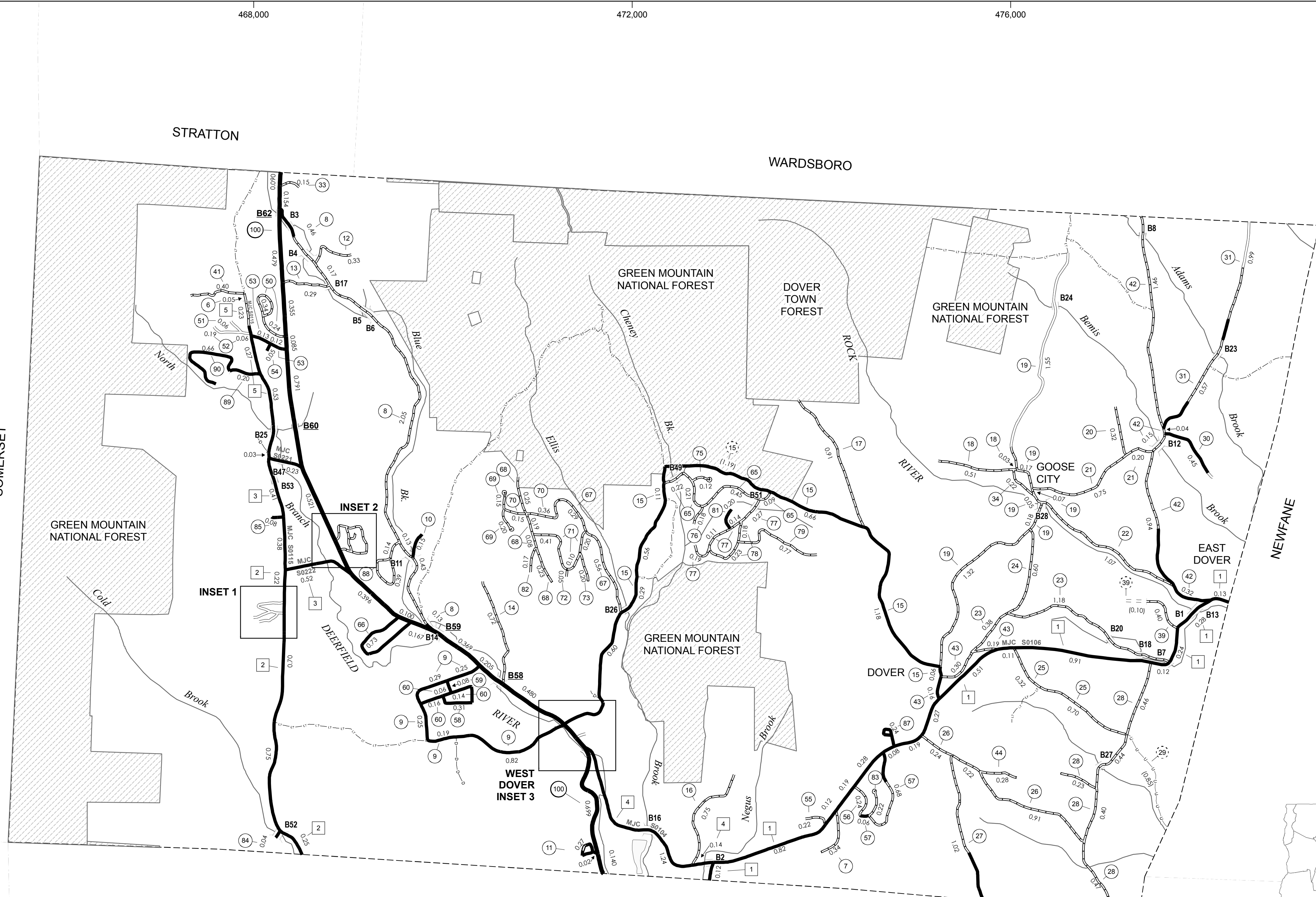


TOWN HWY. NO.	CLASS 3	CLASS 4	LENGTH IN MILES
6	0.050		48 0.170
7	0.340		49 0.160
8	3.370		50 0.580
9	1.800		51 0.060
10	0.150		52 0.250
11	0.290		53 0.250
12	0.330		54 0.050
13	0.290		55 0.220
14	0.720		56 0.240
15	3.830	(0.660)	57 0.740
16	0.750	(0.530)	58 0.310
17	0.910		59 0.080
18	0.540		60 0.360
19	3.340		65 0.970
20	0.320		66 0.730
21	0.950		67 0.850
22	1.070		68 0.750
23	1.560		69 0.350
24	0.600		70 0.510
25	1.020		71 0.710
26	1.370		72 0.050
27	1.020		73 0.200
28	1.770		75 0.120
29		(0.850)	76 0.180
30	0.450		77 0.710
31	1.560		78 0.410
33	0.150		79 0.770
34	0.220		81 0.200
35	0.060		82 0.170
38	0.060		83 0.220
39	0.400	(0.100)	84 0.040
41	0.400		85 0.080
42	2.910		86 0.030
43	0.650		87 0.240
44	0.280		88 0.530
45	0.640		89 0.200
46	0.170		90 0.660
47	0.370		91 0.230
TOTAL			48.090 2.140

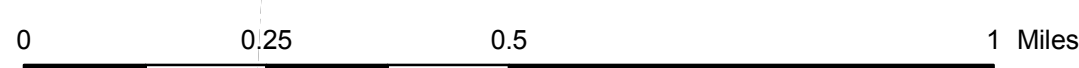
* This portion of town highway is Class 3, but is functionally Class 4

MILEAGE SUMMARY			
CLASS 2			
TH-1	4.370		
TH-2	2.000		
TH-3	1.540		
TH-4	1.380		
TH-5	1.060		
TOTAL CLASS 2		10.350	
CLASS 3			
TOTAL CLASS 3		48.090	
TOTAL TOWN		58.440	
STATE HIGHWAY			
VT-100	5.547		
TOTAL STATE HIGHWAY		5.547	
TOTAL STATE		5.547	

TOTAL, TRAVELED HIGHWAYS, FEB. 10, 2007: 63.987
(Excludes Class 4 and Legal Trail Mileage)



INSET SCALE 1:12672



- HIGHWAYS**
 - INTERSTATE
 - U.S. ROUTE
 - STATE ROUTE
 - CLASS 1
 - CLASS 2
 - CLASS 3
 - CLASS 4
 - LEGAL TRAIL
 - INTERSTATE OR DIVIDED HIGHWAY
 - STATE - HARD SURFACE OR PAVED
 - TOWN - HARD SURFACE OR PAVED
 - GRAVEL
 - SOIL OR GRADED AND DRAINED EARTH
 - UNIMPROVED OR PRIMITIVE
 - IMPASSABLE OR UNTRAVELED
 - LEGAL TRAIL
 - DISCONTINUED
 - HIGHWAY CLASS CHANGE
 - RAILROAD
- PUBLIC LAND**
 - POLITICAL SUBDIVISIONS**
 - STATE BOUNDARY
 - COUNTY BOUNDARY
 - TOWN BOUNDARY
 - VILLAGE BOUNDARY
 - URBAN COMPACT BOUNDARY
 - WATER BODIES**
 - OPEN WATER
 - SWAMP
 - STREAM OR BROOK
 - BRIDGE OR CULVERT**
 - BRIDGE OR CULVERT GREATER THAN 20'
 - BRIDGE OR CULVERT 6' - 20'
- BRIDGE IDENTIFIERS**
 - B34 STATE BRIDGE IDENTIFIER
 - B34 TOWN BRIDGE IDENTIFIER
 - FEDERAL CLASSIFICATION IDENTIFIER**
 - FAU URBAN ARTERIAL OR COLLECTOR
 - MA MINOR ARTERIAL
 - MJC MAJOR COLLECTOR
 - MNC MINOR COLLECTOR
 - PA PRINCIPAL ARTERIAL

VERMONT GENERAL HIGHWAY MAP Town of Dover

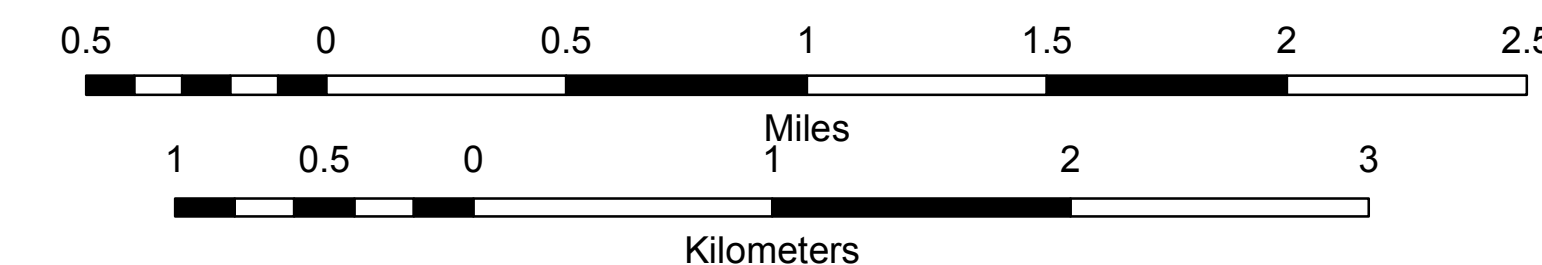
WINDHAM COUNTY

Transportation District #1

Prepared by the
Vermont Agency of Transportation
Policy & Planning Division
in cooperation with
U.S. Department of Transportation
Federal Highway Administration

Mileage as of: Feb. 10, 2007
Map generated: October, 2007

SCALE: 1:25344



DISCLAIMER:
The untraveled highways (laid-out town highways), discontinued highways, and legal trails shown hereon are those of which the Agency of Transportation has record; others may exist.
Highway and bridge data by the Agency of Transportation, Policy & Planning Division. All other data from the Vermont Center for Geographic Information.

Vermont State Plane Coordinate System
North American Datum of 1983
SPCS Zone Identifier: 4400
Geodetic Reference System 80
4,000-meter grid, Easting - Northing

