

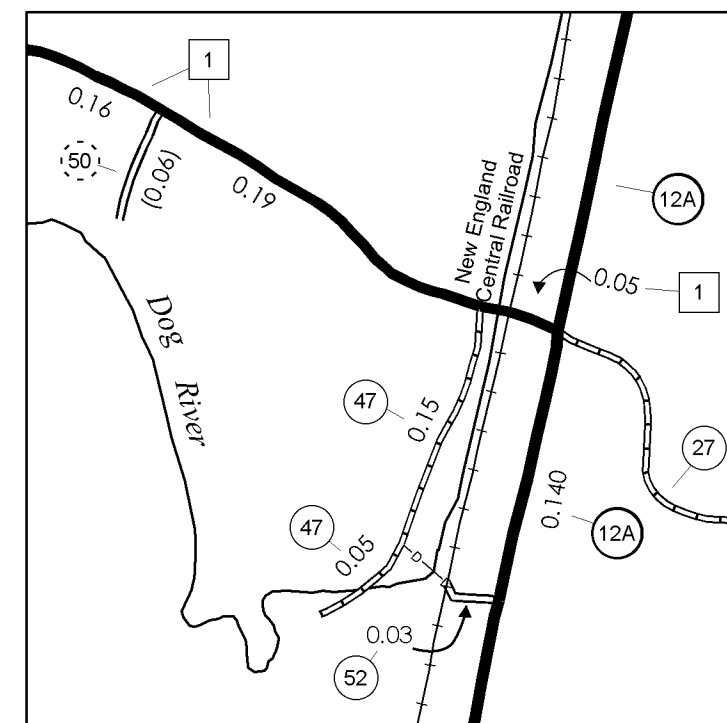
TOWN HWY. NO.	LENGTH IN MILES CLASS 3	CLASS 4
4	0.16	(0.24)
5	1.05	
6	0.80	
7	0.68	
9	0.16	
10	0.50	
11	1.95	(0.22)
12	0.97	(0.60)
14	1.45	
15	0.23	
16		(1.05)
17	0.05	
18		(0.05)
19	0.10	
20	3.91	
21	0.03	
23	2.28	
24	0.67	
26	2.68	(0.32)
27	6.79	
28	1.15	(0.50)
29	0.14	
30	0.84	(0.27)
31		(0.62)
32	0.45	
33	0.20	
34	0.15	
35	0.53	(2.02)
36		(0.28)
37	0.28	(0.07)
38		(0.20)
39	0.96	(0.50)
40	0.13	
41	0.96	(0.67)
42	0.14	(0.72)
43	0.25	(1.25)
45	0.36	
46	0.20	(0.04)
47	0.13	
48		(0.20)
49		(0.06)
50		
51	0.06	
52	0.03	
54		(0.15)
55	0.30	
<b>TOTAL</b>	<b>31.72</b>	<b>10.03</b>

\* This portion of town highway is Class 3, but is functionally Class 4

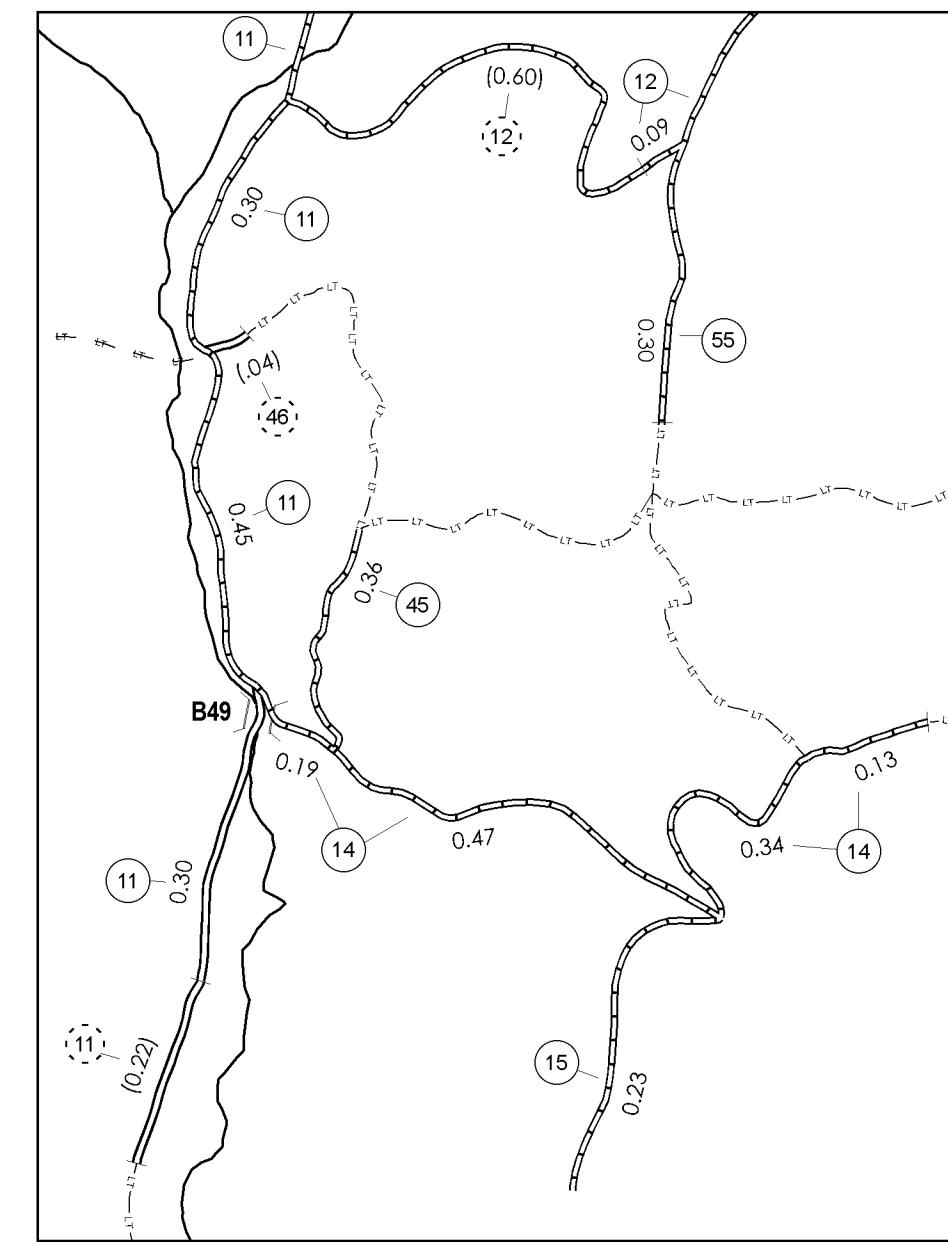
**MILEAGE SUMMARY**

CLASS 2		
TH-1	3.080	
<b>TOTAL CLASS 2</b>		<b>3.080</b>
CLASS 3		
TOTAL CLASS 3	31.720	
<b>TOTAL TOWN</b>		<b>34.800</b>
STATE HIGHWAY		
VT-12	1.484	
VT-12A	6.215	
<b>TOTAL STATE HIGHWAY</b>		<b>7.699</b>
<b>TOTAL STATE</b>		<b>7.699</b>

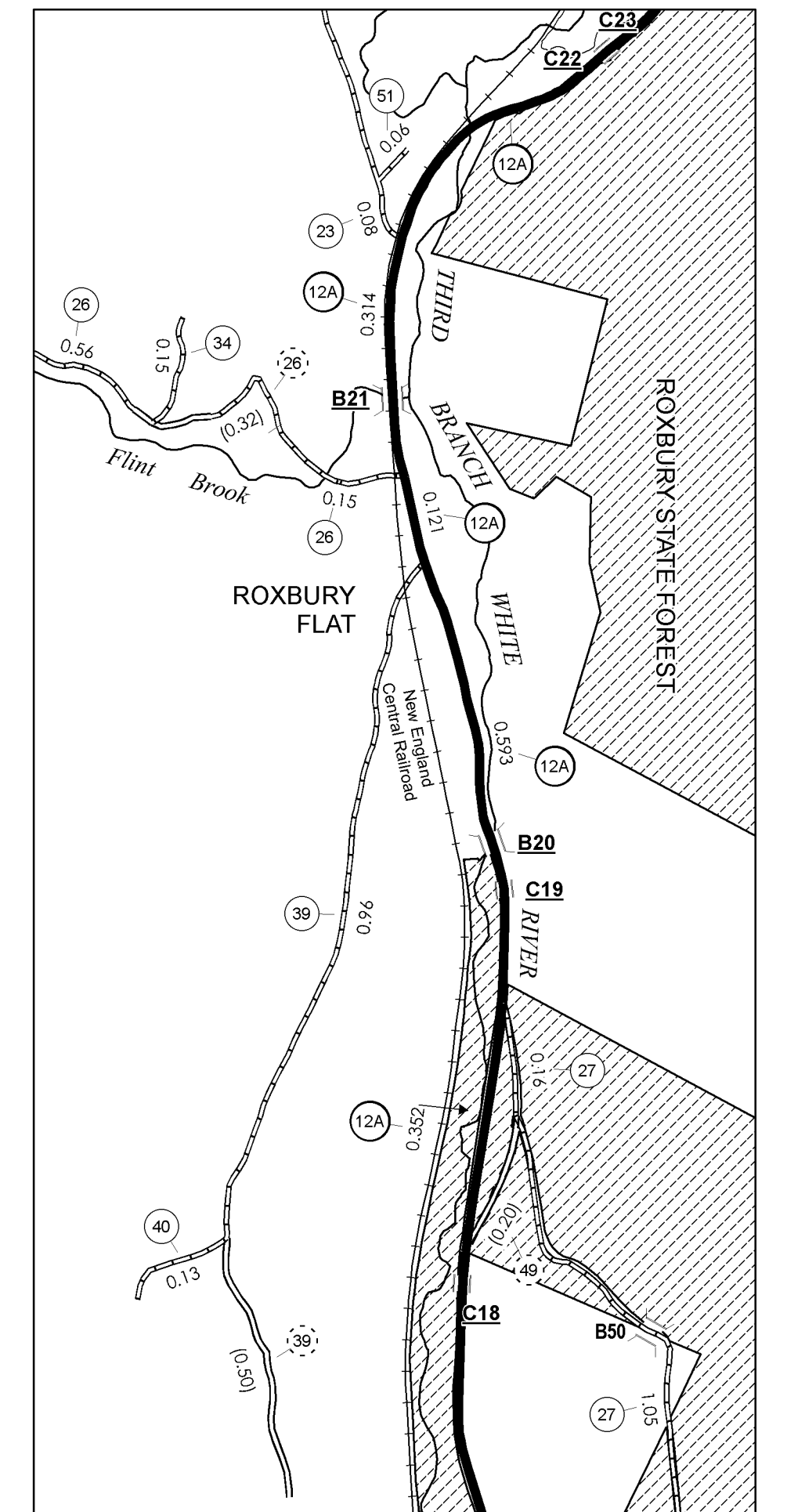
**TOTAL, TRAVELED HIGHWAYS, FEB. 10, 2008: 42.499**  
(Excludes Class 4 and Legal Trail Mileage)



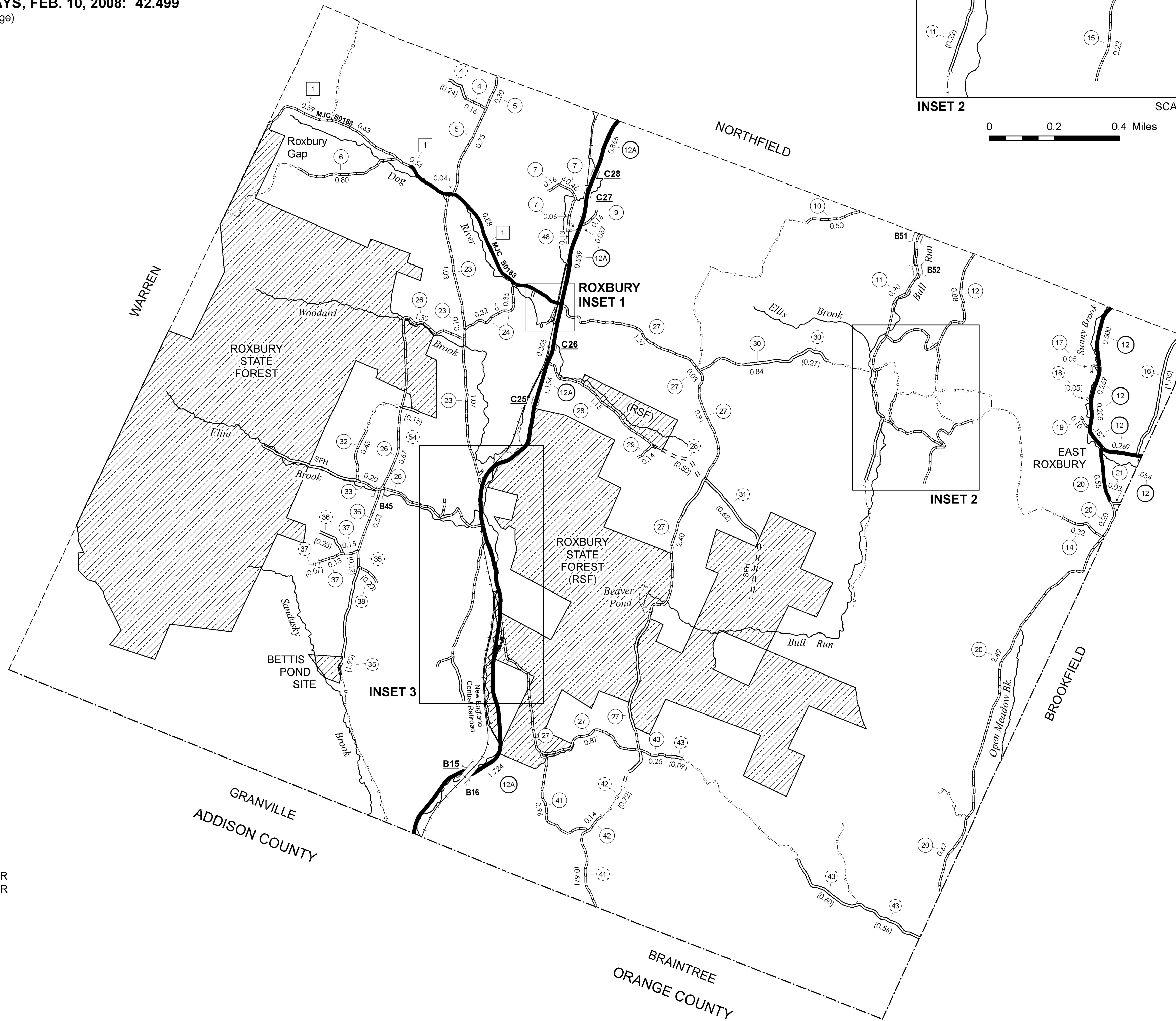
ROXBURY INSET 1 SCALE 1:6336



INSET 2 SCALE 1:12672



INSET 3 SCALE 1:12672



- HIGHWAYS**
- INTERSTATE
  - U.S. ROUTE
  - STATE ROUTE
  - CLASS 1
  - CLASS 2
  - CLASS 3
  - CLASS 4
  - LEGAL TRAIL
  - STATE - HARD SURFACE OR PAVED
  - TOWN - HARD SURFACE OR PAVED
  - GRAVEL
  - SOIL OR GRADED AND DRAINED EARTH
  - UNIMPROVED OR PRIMITIVE
  - IMPASSABLE OR UNTRAVELED
  - LEGAL TRAIL
  - DISCONTINUED
  - HIGHWAY CLASS CHANGE
  - RAILROAD

- PUBLIC LAND**
- POLITICAL SUBDIVISIONS**
- STATE BOUNDARY
  - COUNTY BOUNDARY
  - TOWN BOUNDARY
  - VILLAGE BOUNDARY
  - URBAN COMPACT BOUNDARY
  - OPEN WATER
  - STREAM OR BROOK
  - BRIDGE OR CULVERT
  - BRIDGE OR CULVERT GREATER THAN 20'
  - BRIDGE OR CULVERT 6' - 20'

- B34 / C34 STATE BRIDGE OR CULVERT IDENTIFIER**
- B34 / C34 TOWN BRIDGE OR CULVERT IDENTIFIER**

- FEDERAL CLASSIFICATION IDENTIFIER**
- FAU URBAN ARTERIAL OR COLLECTOR
  - MA MINOR ARTERIAL
  - MJC MAJOR COLLECTOR
  - MNC MINOR COLLECTOR
  - PA PRINCIPAL ARTERIAL

**DISCLAIMER:**

The untraveled highways (laid-out town highways), discontinued highways, and legal trails shown herein are those of which the Agency of Transportation has record; others may exist.

Highway and bridge data by the Agency of Transportation, Policy & Planning Division. All other data from the Vermont Center for Geographic Information.

**STRUCTURES - SURFACE WATER NOTE:**

Town short structures (bridges or culverts from 6-feet to less than 20-feet) were not represented due to inconsistencies in the data.

The surface waters are from the Vermont Hydrological Dataset (VHD). Only the named streams are shown.

Vermont State Plane Coordinate System  
North American Datum of 1983  
SPCS\_Zone\_Identifier: 4400  
Geodetic Reference System 80  
4,000-meter grid, Easting - Northing

**VERMONT**  
**GENERAL HIGHWAY MAP**  
**Town of Roxbury**  
WASHINGTON COUNTY

Transportation District #6

Prepared by the  
Vermont Agency of Transportation  
Policy & Planning Division  
in cooperation with  
U.S. Department of Transportation  
Federal Highway Administration

Mileage as of February 10, 2008  
Map generated: September, 2008

SCALE: 1:31680

