

TOWN HWY. NO.	LENGTH IN MILES CLASS 3	CLASS 4	1.86	(0.29)
7	1.16	(0.39)	61	1.86
8	10.63		62	
9	1.24	(0.16)	63	0.16
10	0.20		64	0.20
12	0.06		65	0.25
13	0.35		66	0.40
14	0.07	(0.73)	67	0.06
15	0.20	(0.12)	68	0.20
16	0.59	(0.42)	69	0.20
17	0.20		70	0.20
18	1.97		71	0.18
19	0.10	(0.15)	72	0.87
20	0.60	(0.40)	73	1.37
21	0.10		74	0.50
23	0.54	(1.06)	75	3.85
24	3.62	(0.60)	76	0.05
25	0.40		77	0.38
26	0.40		78	
27	0.25	(0.20)	79	0.55
28	0.40		80	0.05
29	0.70		81	0.05
30		(0.20)	83	0.22
31	0.81		84	0.04
32	2.31		85	0.10
33	0.40		86	0.07
34	0.30		87	0.15
35	0.10		88	0.08
36	0.08		89	0.10
37	0.04		90	0.03
38	0.15		92	0.09
39		(0.20)	93	0.05
40		(0.20)	94	0.10
41	0.14		95	0.05
42	0.11		96	0.17
43	0.32	(0.60)	97	
44	0.30		98	0.06
45	0.82	(0.43)	99	0.18
46	0.35	(1.20)	100	0.27
47	0.62		101	0.07
48	0.10		102	0.11
49	0.25		103	0.21
50	0.03	(0.37)	104	0.32
51	1.10		105	0.05
52	0.50		106	0.16
53	2.10		107	0.16
54	0.03		108	0.04
55	0.10		109	0.34
56	1.42	(0.13)	110	0.77
57	3.12		111	0.09
58	1.84		112	0.10
59	0.25		113	0.15
60	0.35		TOTAL	57.68 8.15

LEGAL TRAIL NO.	LENGTH IN MILES LEGAL TRAIL
1	(0.40)
2	(0.08)
3	(0.07)
4	(0.14)
TOTAL	0.69

MILEAGE SUMMARY

CLASS	LENGTH	TOTAL CLASS
CLASS 1	0.508	
TH-1	0.401	
TH-2		0.909
TOTAL CLASS 1		0.909
CLASS 2	1.350	
TH-3	2.810	
TH-4	0.650	
TH-5		4.810
TOTAL CLASS 2		4.810
CLASS 3	57.680	
TOTAL CLASS 3		57.680
TOTAL TOWN		63.399

TOTAL, TRAVELED HIGHWAYS, FEB. 10, 2011: 73.940
(Excludes Class 4, Legal Trail, and Unidentified Corridor Mileage)

TOTAL STATE HIGHWAY 10.541
TOTAL STATE 10.541

- HIGHWAYS**
- INTERSTATE
 - U.S. ROUTE
 - STATE ROUTE
 - CLASS 1
 - CLASS 2
 - CLASS 3
 - CLASS 4
 - LEGAL TRAIL
 - INTERSTATE OR DIVIDED HIGHWAY
 - STATE - HARD SURFACE OR PAVED
 - TOWN - HARD SURFACE OR PAVED
 - GRAVEL
 - SOIL OR GRADED AND DRAINED EARTH
 - UNIMPROVED OR PRIMITIVE
 - IMPASSABLE OR UNTRAVELED
 - LEGAL TRAIL
 - DISCONTINUED
 - HIGHWAY CLASS CHANGE
 - RAILROAD
 - INACTIVE RAILROAD

- PUBLIC LAND**
- POLITICAL SUBDIVISIONS**
- STATE BOUNDARY
 - COUNTY BOUNDARY
 - TOWN BOUNDARY
 - VILLAGE BOUNDARY
 - URBAN COMPACT BOUNDARY
 - WATER BODY
 - STREAM OR BROOK
 - BRIDGE OR CULVERT
 - BRIDGE OR CULVERT GREATER THAN 20'
 - BRIDGE OR CULVERT 6' - 20'
 - TOWN SHORT STRUCTURE
- B34 / C34 STATE BRIDGE OR CULVERT IDENTIFIER**
B34 / C34 TOWN BRIDGE OR CULVERT IDENTIFIER
- FEDERAL CLASSIFICATION IDENTIFIER**
- FAU URBAN ARTERIAL OR COLLECTOR
 - MA MINOR ARTERIAL
 - MJC MAJOR COLLECTOR
 - MNC MINOR COLLECTOR
 - PA PRINCIPAL ARTERIAL

STRUCTURES - SURFACE WATER NOTE:

STRUCTURES:
Town short structures (bridges or culverts from 6-feet to less than 20-feet) are drawn from the Vermont Online Bridge & Culvert Inventory Tool (VOBCIT) database.
NOTE: Town shorts are not consistently tagged within VOBCIT.

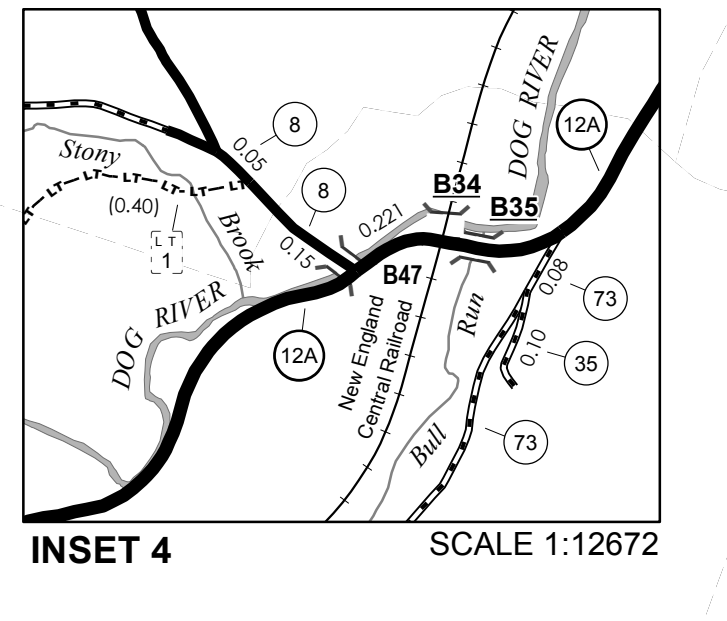
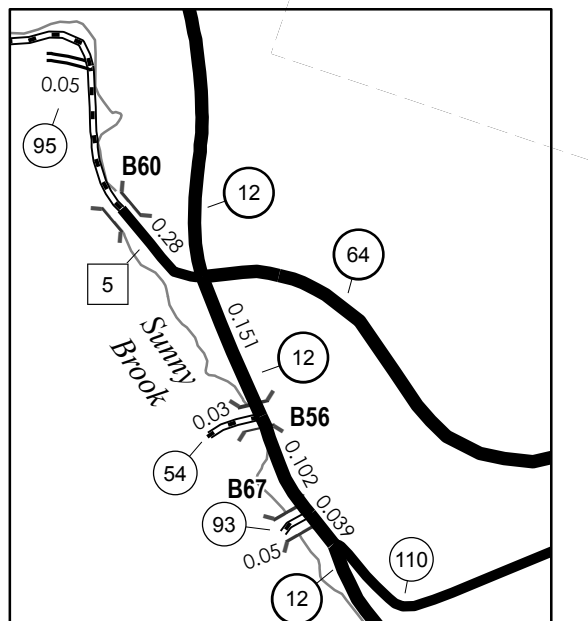
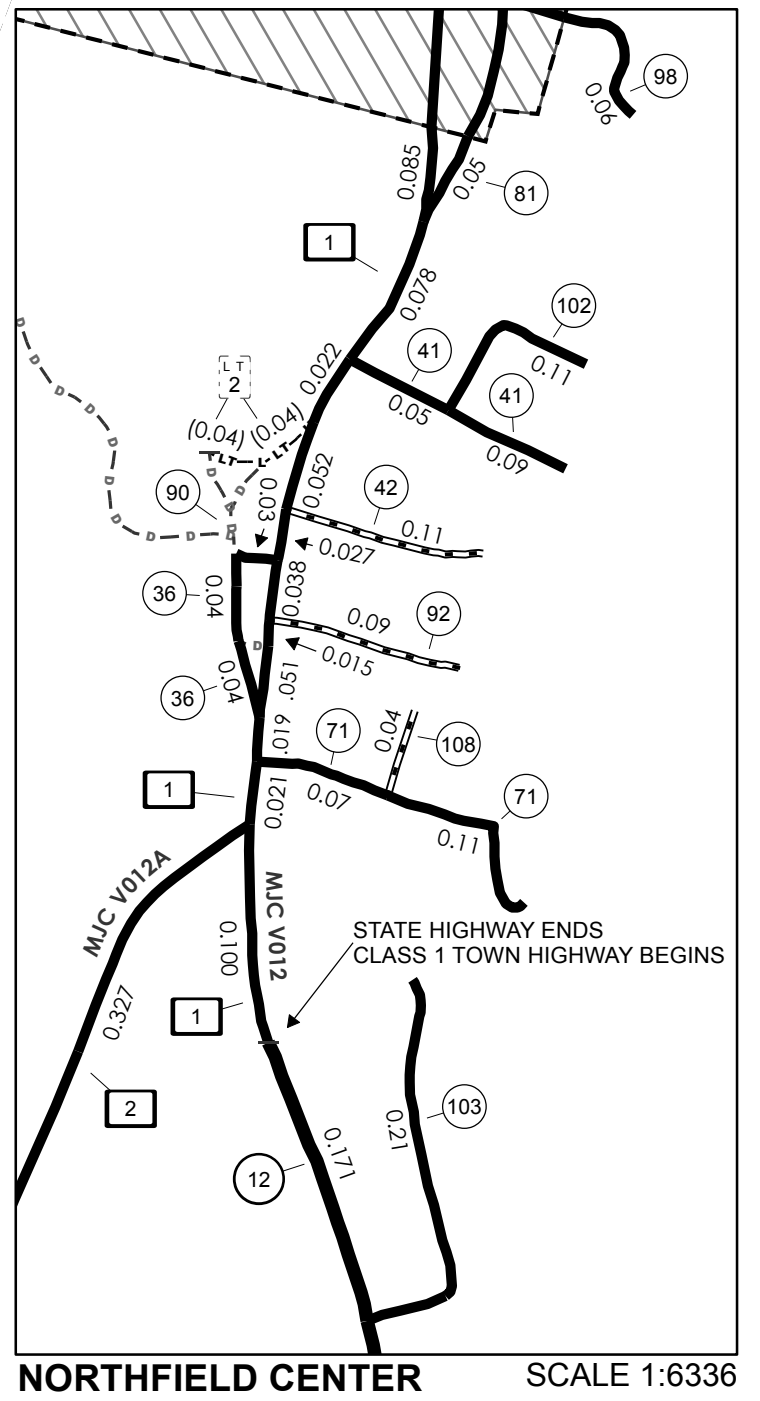
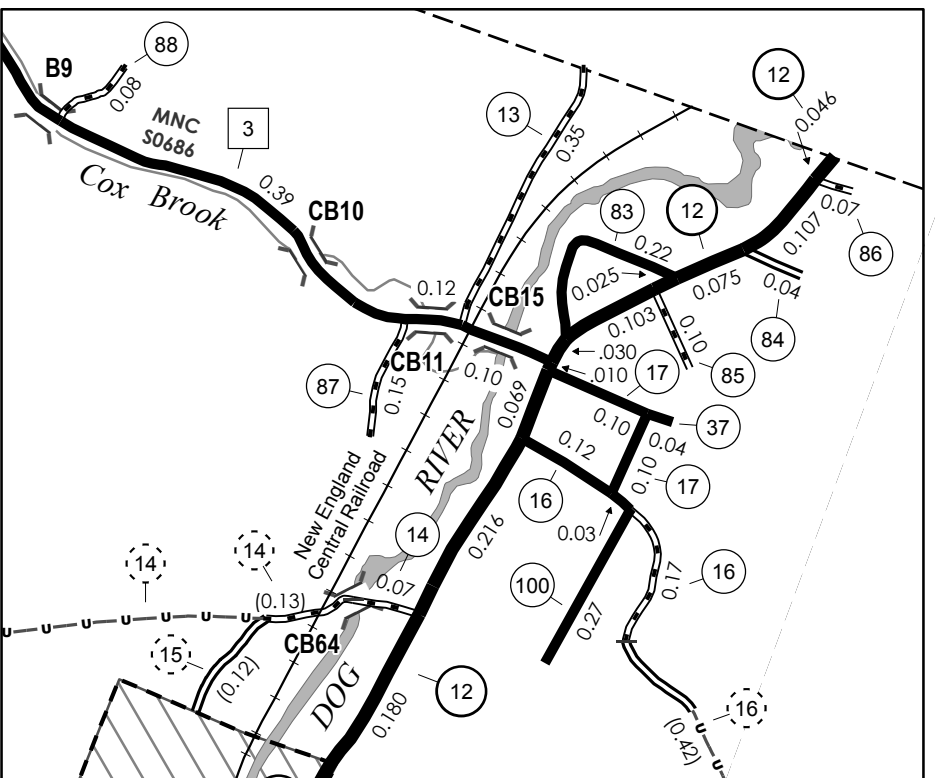
SURFACE WATERS:
The surface waters are from the Vermont Hydrological Dataset (VHD). Only the named streams are shown.

DISCLAIMER:

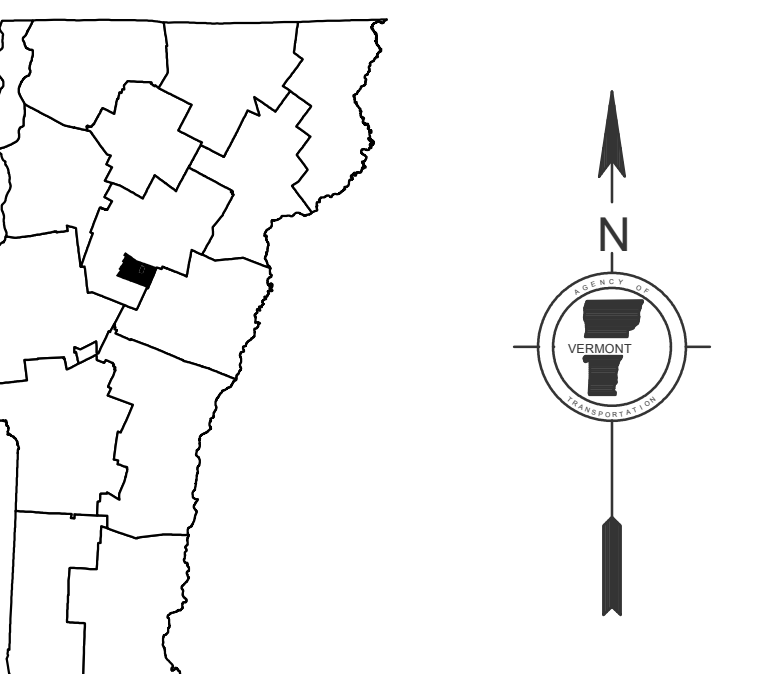
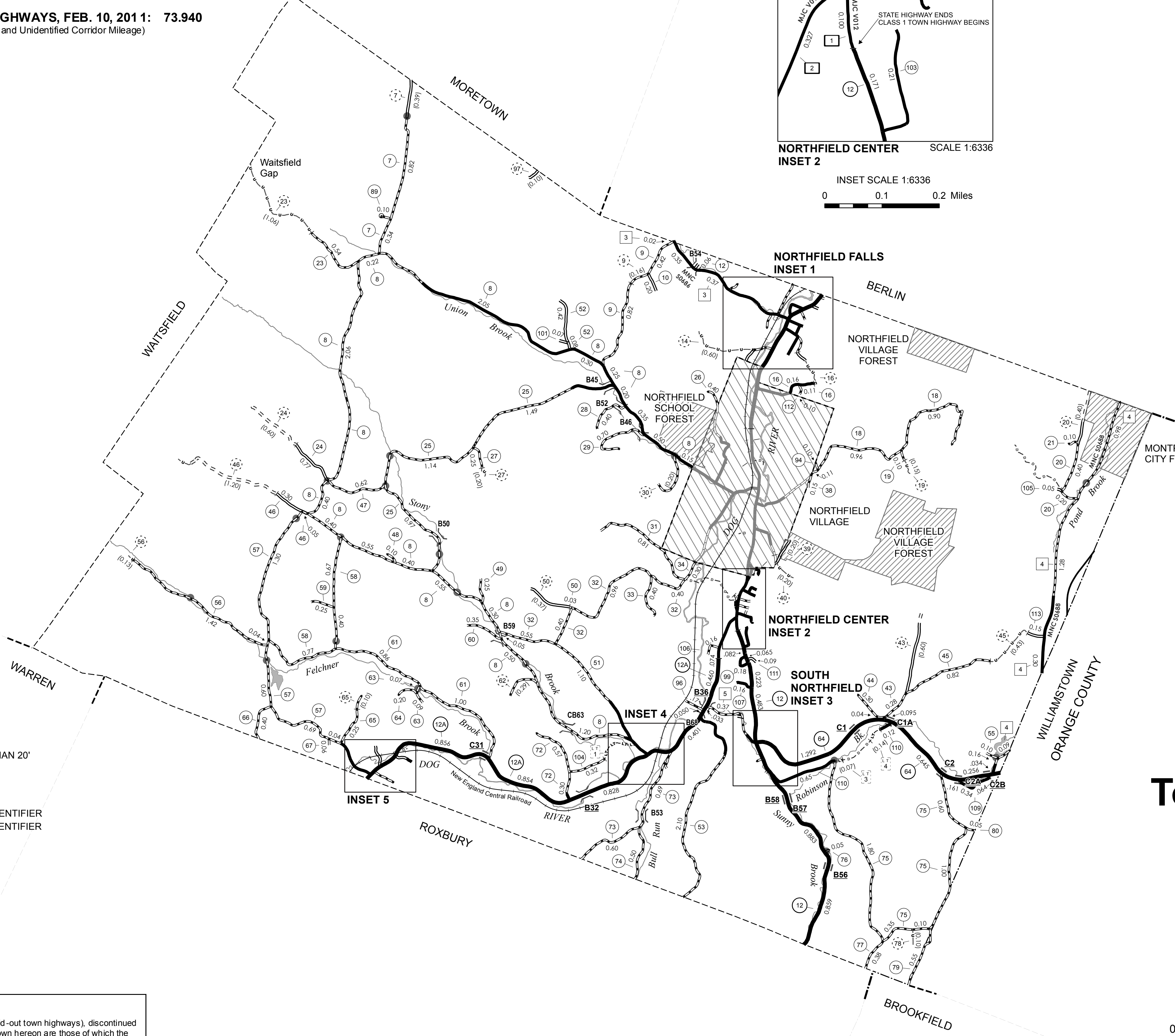
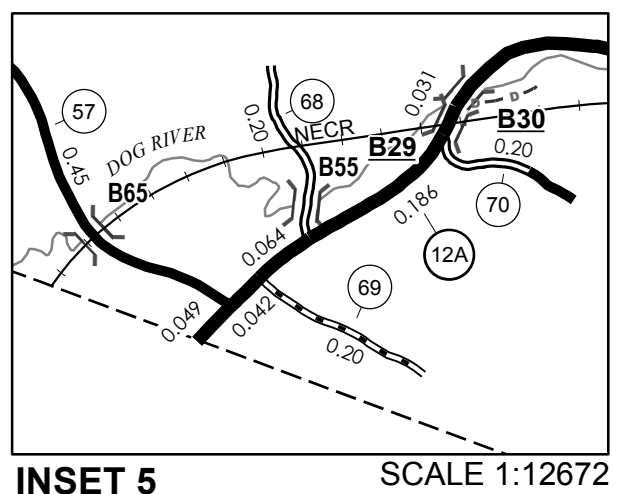
The untraveled highways (laid-out town highways), discontinued highways, and legal trails shown hereon are those of which the Agency of Transportation has record; others may exist.

Highway and bridge data by the Agency of Transportation. All other data from the Vermont Center for Geographic Information.

Vermont State Plane Coordinate System
North American Datum of 1983
SPCS Zone Identifier: 4400
Geodetic Reference System 80
4,000-meter grid, Easting - Northing



SCALE FOR INSETS 1:12672 (UNLESS OTHERWISE NOTED)



VERMONT GENERAL HIGHWAY MAP
Town of Northfield

WASHINGTON COUNTY
Transportation District #6
Prepared by the Vermont Agency of Transportation
Division of Policy, Planning & Intermodal Development
in cooperation with
U.S. Department of Transportation
Federal Highway Administration

