

TOWN HWY. No.	LENGTH IN MILES CLASS 3	LENGTH IN MILES CLASS 4
5	4.46	
6	1.55	(0.68)
7	0.10	(0.05)
8	0.17	
9	1.20	(0.55)
11	0.10	
12	0.41	
14	0.14	(0.55)
15	1.06	(1.06)
17	1.65	
19		(0.13)
20	1.55	
21	1.45	
22	0.20	
23		(0.40)
24	0.17	(0.91)
25	0.55	(0.30)
26	1.45	
27	0.13	
29	0.10	
30	0.92	(2.08)
31		(2.60)
33		(0.50)
35	0.45	(0.15)
36	0.65	
37	1.68	
38	0.90	
39	0.10	
40	0.62	
41	1.91	(0.15)
42	0.42	
43	0.25	
44	0.30	(1.21)
46		(0.40)
47		(0.50)
48	0.06	
50	0.16	
53		(0.52)
54	0.44	(0.35)
55	0.20	
57	0.08	
58		(0.04)
59	0.11	
63	0.08	
64	0.07	
65	0.35	(0.04)
66	0.10	
67	0.50	
TOTAL	25.73	13.17

MILEAGE SUMMARY

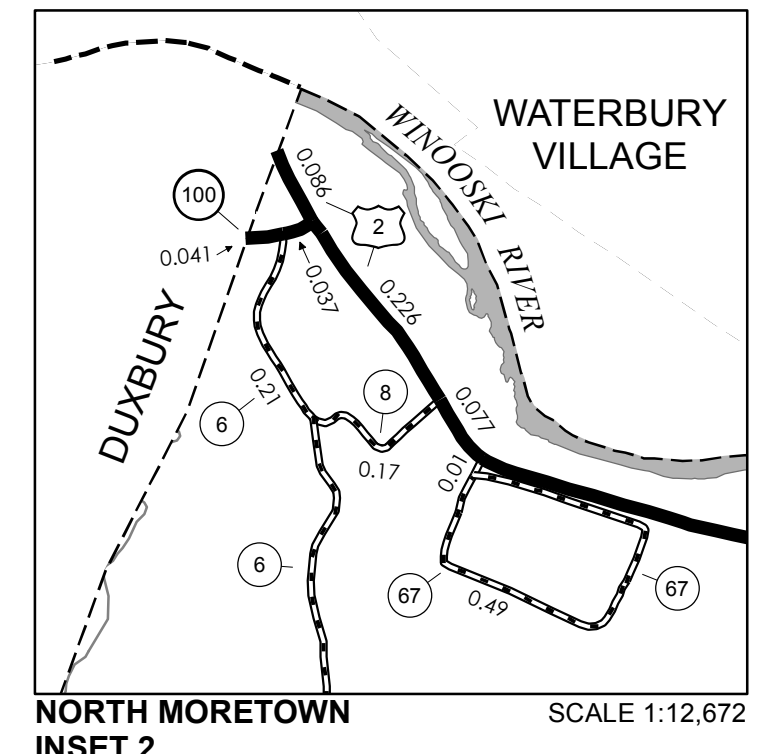
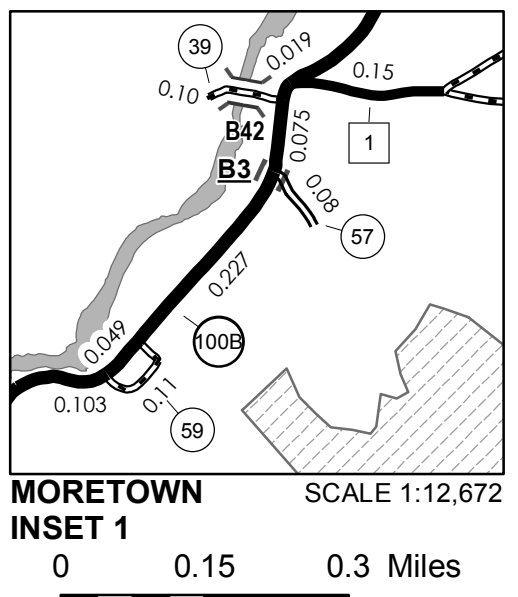
CLASS 2	6.700	
TH-1	2.830	
TH-2	1.200	
TH-3		
TOTAL CLASS 2	10.730	
CLASS 3		
TOTAL CLASS 3	25.73	
TOTAL TOWN	36.460	
STATE HIGHWAY		
VT-100	1.227	
VT-100B	7.841	
TOTAL STATE HIGHWAY	9.068	
US HIGHWAY		
US-2	3.219	
TOTAL US HIGHWAY	3.219	
TOTAL STATE	12.287	

TOTAL, TRAVELED HIGHWAYS, FEB. 10, 2012: 48.747
(Excludes Class 4, Legal Trail, and Unidentified Corridor Mileage)

TOWN HWY. No.	LENGTH IN MILES "NOT UP TO STANDARD"
42	(0.18)
TOTAL	0.18

* The sections of the town highways listed above are legally Class 3, but have been deemed "Not Up To Standard" and are functionally Class 4 Town Highways

LEGAL TRAIL No.	LENGTH IN MILES LEGAL TRAIL
1	(1.50)
2	(1.10)
3	(0.65)
4	(0.10)
5	(1.31)
6	(1.05)
7	(0.25)
8	(0.10)
9	(0.45)
10	(0.40)
11	(1.00)
12	(1.25)
13	(0.75)
14	(0.20)
15	(0.40)
16	(0.30)
17	(1.00)
18	(1.30)
19	(0.60)
20	(0.20)
21	(0.90)
TOTAL	14.81



FEDERAL CLASSIFICATION IDENTIFIER

FAU	URBAN ARTERIAL OR COLLECTOR
MA	MINOR ARTERIAL
MJC	MAJOR COLLECTOR
MNC	MINOR COLLECTOR
PA	PRINCIPAL ARTERIAL

VERMONT GENERAL HIGHWAY MAP
Town of Moretown
WASHINGTON COUNTY
Transportation District #6
Prepared by the Vermont Agency of Transportation
Division of Policy, Planning and Intermodal Development
in cooperation with
U.S. Department of Transportation
Federal Highway Administration
Mileage as of February 10, 2012
Map prepared October 01, 2012
SCALE 1:31,680

DISCLAIMER:
The untraveled highways (laid-out town highways), discontinued highways, and legal trails herein are those of which the Agency of Transportation has record; others may exist.
Highway and bridge data by the Agency of Transportation. All other data from the Vermont Center for Geographic Information. Only named streams are shown.

Vermont State Plane Coordinate System
North American Datum of 1983
SPCS_Zone_Identifier: 4400
Geodetic Reference System 80
4,000-meter grid, Easting - Northing