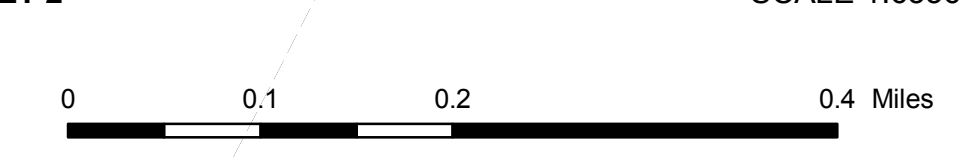
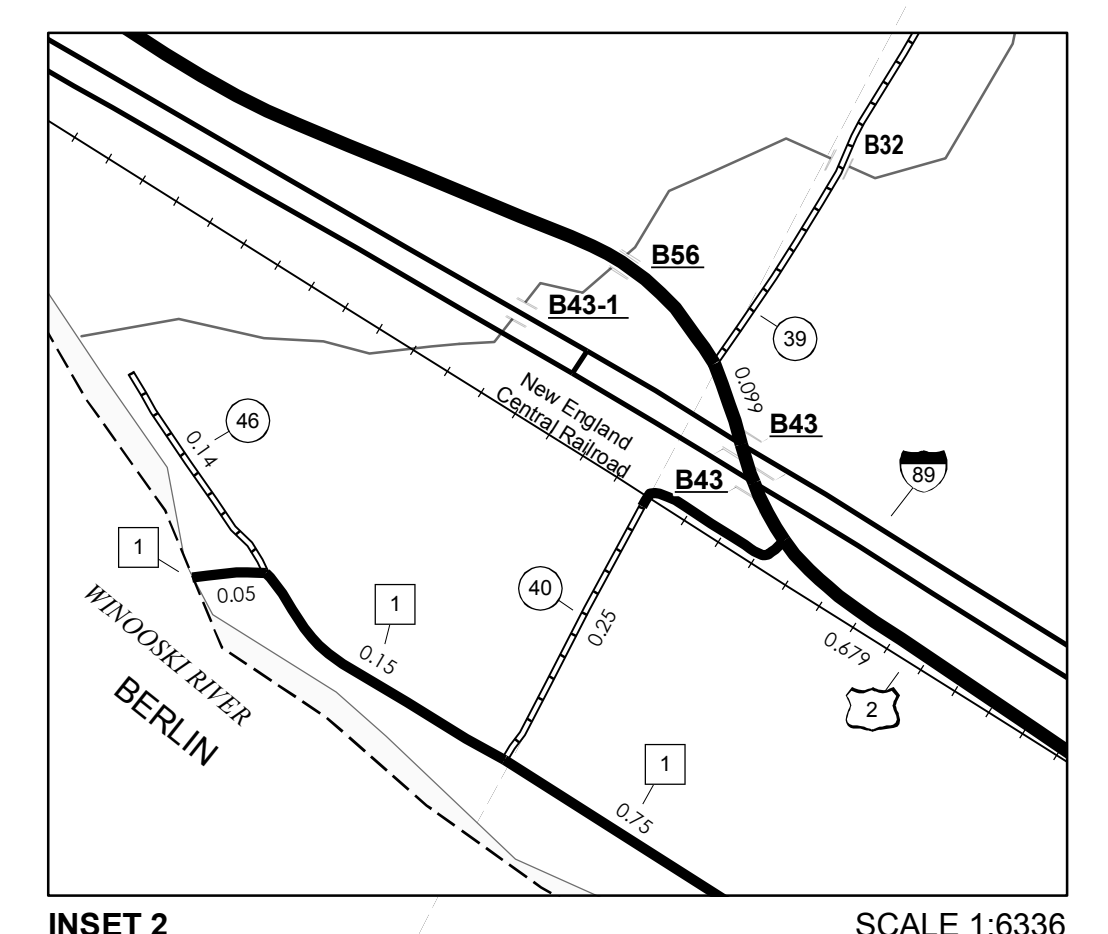
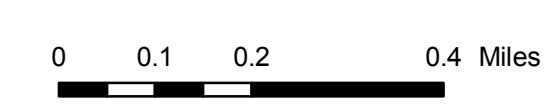
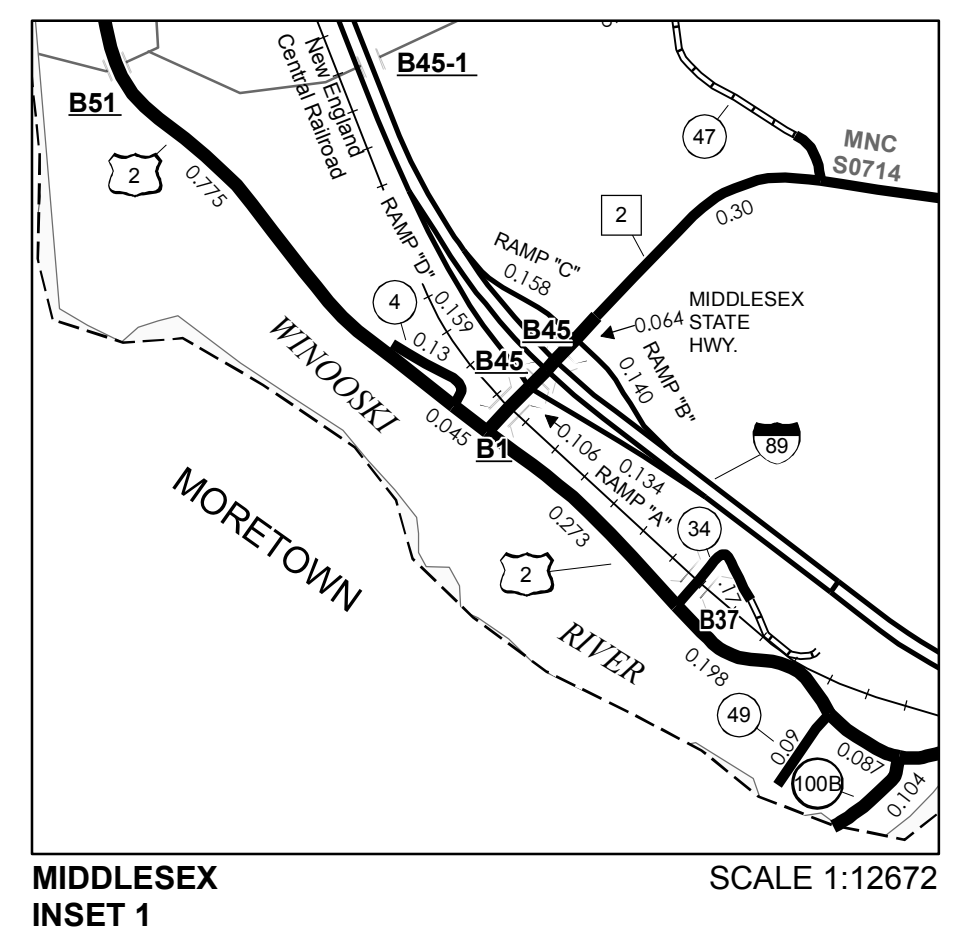


476,000 480,000 484,000 488,000 492,000 496,000 500,000

**TOWN LENGTH IN MILES**

HWY. NO.	CLASS 3	CLASS 4
4	0.130	
6	1.200	
7	2.160	(1.160)
8	2.100	
9	1.320	(0.100)
10	0.650	
11	0.100	
14	3.280	(0.820)
15	1.320	(2.000)
16		(1.520)
17	1.300	
18	2.420	
19	0.180	
20	0.130	(1.040)
21	0.250	
22	3.100	
23	0.200	
24	0.220	(0.230)
25	1.200	(1.000)
26	0.400	
27	1.700	
29	0.670	
32	0.370	(0.790)
33	1.640	(0.540)
34	0.170	
36	2.610	(0.400)
37	0.920	(1.300)
38	0.900	
39	1.650	(0.400)
40	0.250	
42	0.080	
45	0.520	
46	0.140	
47	0.250	
48		(0.530)
49	0.090	
<b>TOTAL</b>	<b>32.300</b>	<b>11.830</b>



**MILEAGE SUMMARY**

CLASS	LENGTH IN MILES
CLASS 2	
TH-1	0.950
TH-2	9.330
TH-3	3.940
TH-5	1.700
<b>TOTAL CLASS 2</b>	<b>15.920</b>
CLASS 3	
<b>TOTAL CLASS 3</b>	<b>32.300</b>
<b>TOTAL TOWN</b>	<b>48.220</b>
STATE HIGHWAY	
VT-12	3.650
VT-100B	0.104
NSH-MSH	0.170
<b>TOTAL STATE HIGHWAY</b>	<b>3.924</b>
US HIGHWAY	
US-2	5.628
<b>TOTAL US HIGHWAY</b>	<b>5.628</b>
<b>TOTAL STATE</b>	<b>9.552</b>
INTERSTATE	
I-89	6.786
<b>TOTAL INTERSTATE</b>	<b>6.786</b>
INTERSTATE - Ramp	
I-89	0.591
<b>TOTAL INTERSTATE - Ramp</b>	<b>0.591</b>
<b>TOTAL INTERSTATE</b>	<b>7.377</b>

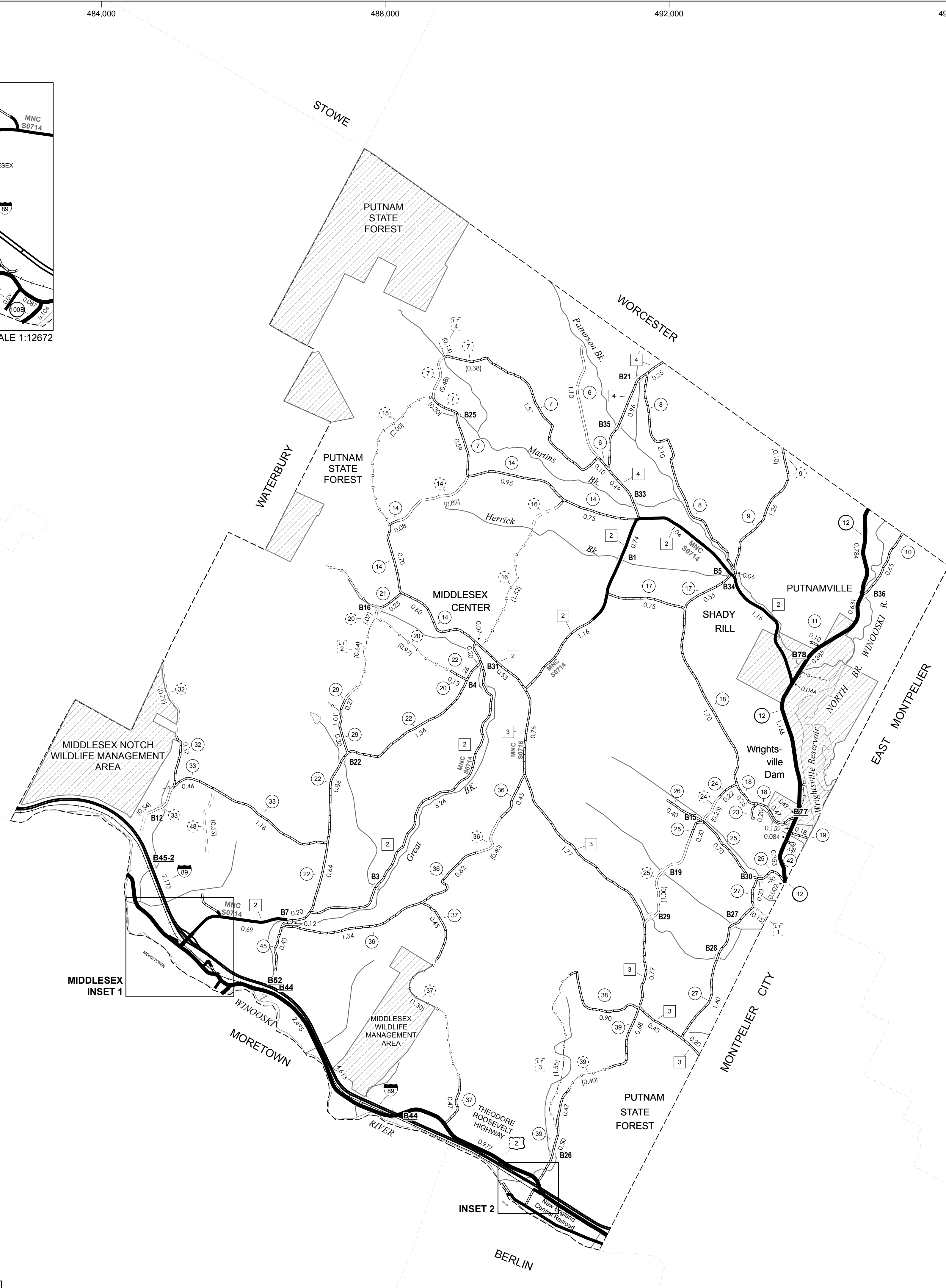
**LEGAL TRAIL LENGTH IN MILES**

TRAIL NO.	LENGTH IN MILES
1	(0.150)
2	(0.640)
3	(1.550)
4	(0.140)
<b>TOTAL</b>	<b>2.480</b>

**TOTAL, TRAVELED HIGHWAYS, FEB. 10, 2007: 65.149**  
(Excludes Class 4 and Legal Trail Mileage)

- HIGHWAYS**
- INTERSTATE
  - U.S. ROUTE
  - STATE ROUTE
  - CLASS 1
  - CLASS 2
  - CLASS 3
  - CLASS 4
  - LEGAL TRAIL
  - INTERSTATE OR DIVIDED HIGHWAY
  - STATE - HARD SURFACE OR PAVED
  - TOWN - HARD SURFACE OR PAVED
  - GRAVEL
  - SOIL OR GRADED AND DRAINED EARTH
  - UNIMPROVED OR PRIMITIVE
  - IMPASSABLE OR UNTRAVELED
  - LEGAL TRAIL
  - DISCONTINUED
  - HIGHWAY CLASS CHANGE
  - RAILROAD
- FEDERAL CLASSIFICATION IDENTIFIER**
- FAU URBAN ARTERIAL OR COLLECTOR
  - MA MINOR ARTERIAL
  - MJC MAJOR COLLECTOR
  - MNC MINOR COLLECTOR
  - PA PRINCIPAL ARTERIAL
- PUBLIC LAND**
- POLITICAL SUBDIVISIONS
  - STATE BOUNDARY
  - COUNTY BOUNDARY
  - TOWN BOUNDARY
  - VILLAGE BOUNDARY
  - URBAN COMPACT BOUNDARY
- WATER BODIES**
- OPEN WATER
  - SWAMP
  - STREAM OR BROOK
- BRIDGE OR CULVERT**
- BRIDGE OR CULVERT GREATER THAN 20'
  - BRIDGE OR CULVERT 6' - 20'
- B34 STATE BRIDGE IDENTIFIER**
- B34 TOWN BRIDGE IDENTIFIER**

**DISCLAIMER:**  
The untraveled highways (laid-out town highways), discontinued highways, and legal trails shown hereon are those of which the Agency of Transportation has record; others may exist.  
Highway and bridge data by the Agency of Transportation, Policy & Planning Division. All other data from the Vermont Center for Geographic Information.

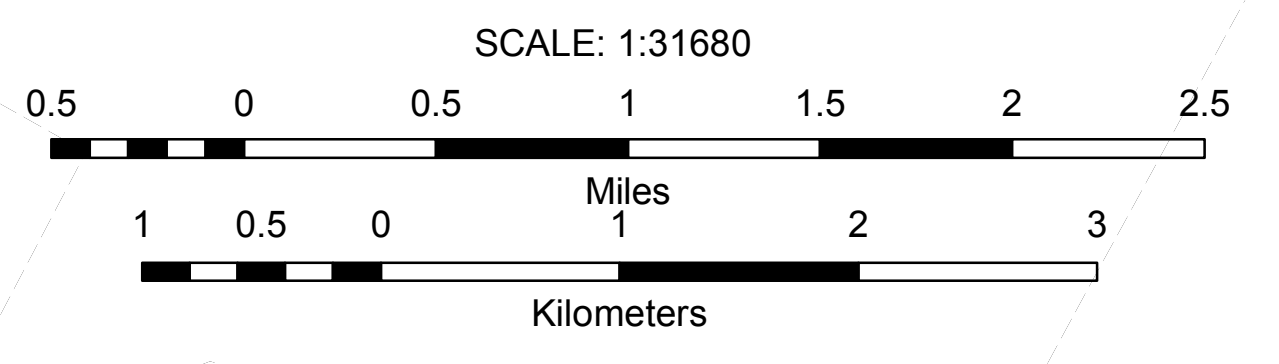


**VERMONT**  
**GENERAL HIGHWAY MAP**  
**Town of Middlesex**  
WASHINGTON COUNTY

Transportation District #6

Prepared by the  
Vermont Agency of Transportation  
Policy & Planning Division  
in cooperation with  
U.S. Department of Transportation  
Federal Highway Administration

Mileage as of: Feb. 10, 2007  
Map generated: October, 2007



Vermont State Plane Coordinate System  
North American Datum of 1983  
SPCS Zone Identifier: 4400  
Geodetic Reference System 80  
4,000-meter grid, Easting - Northing

