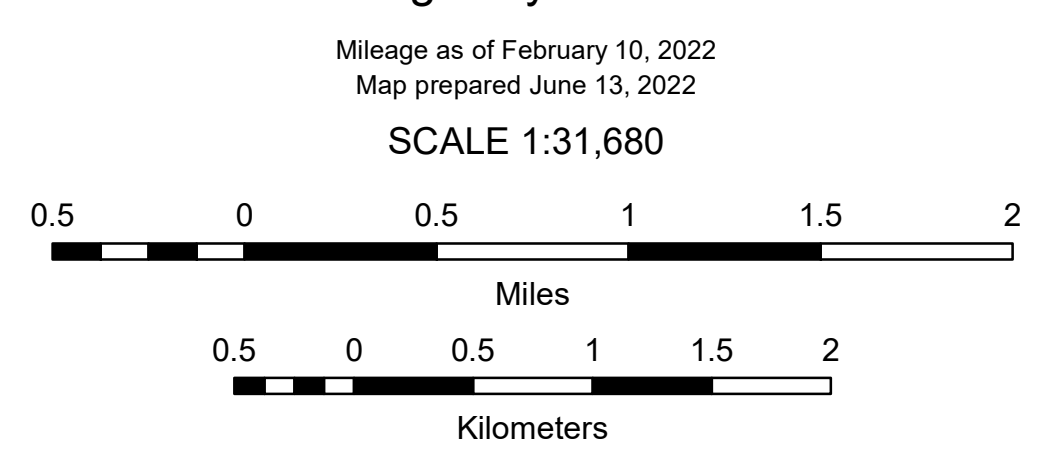


**VERMONT
GENERAL HIGHWAY MAP
Town of Duxbury**

WASHINGTON COUNTY
Transportation District #6
Prepared by the
Vermont Agency of Transportation
Division of Policy, Planning and Intermodal Development
in cooperation with
U.S. Department of Transportation
Federal Highway Administration



TOWN HWY. No.	LENGTH IN MILES CLASS 3	LENGTH IN MILES CLASS 4
4	3.52	
5	0.45	(0.51)
6	0.77	(0.83)
7	0.17	
12	3.57	(0.13)
13	0.36	
14	0.38	(0.04)
15		(0.09)
16	0.40	
20	0.35	
22	0.51	
23	0.20	
25	0.30	
26	0.15	(0.37)
27	1.05	
28	0.55	
29	0.10	
30		(0.10)
31	1.35	
35	5.26	(1.14)
37		(0.11)
38		(0.03)
41	0.40	
42	0.26	
43	0.94	
44	0.25	
TOTAL	21.29	3.35

LEGAL TRAIL No.	LENGTH IN MILES LEGAL TRAIL
1	(0.08)
2	(0.40)
3	(0.17)
4	(2.30)
5	(0.45)
6	(0.35)
7	(0.54)
8	(0.70)
9	(0.34)
10	(0.55)
11	(0.82)
12	(0.35)
TOTAL	7.05

MILEAGE SUMMARY

CLASS	LENGTH IN MILES	TOTAL
CLASS 2	7.140	
TH-1	0.030	
TH-2		7.170
TOTAL CLASS 2		7.170
CLASS 3		
TOTAL CLASS 3	21.29	
TOTAL TOWN		28.460
STATE HIGHWAY		
VT-100	6.234	
TOTAL STATE HIGHWAY	6.234	
US HIGHWAY		
US-2	0.082	
TOTAL US HIGHWAY	0.082	
TOTAL STATE	6.316	

TOTAL, TRAVELED HIGHWAYS, FEB. 10, 2022: 34.776
(Excludes Class 4 and Legal Trail Mileage)

- HIGHWAYS**
- INTERSTATE
 - U.S. ROUTE
 - STATE ROUTE
 - CLASS 1
 - CLASS 2
 - CLASS 3
 - CLASS 4
 - LEGAL TRAIL
 - PARK AND RIDE
 - INTERSTATE OR DIVIDED HIGHWAY
 - STATE - HARD SURFACE OR PAVED
 - TOWN - HARD SURFACE OR PAVED
 - GRAVEL
 - SOIL OR GRADED AND DRAINED EARTH
 - UNIMPROVED OR PRIMITIVE
 - IMPASSABLE OR UNTRAVELED
 - LEGAL TRAIL
 - DISCONTINUED
 - HIGHWAY CLASS CHANGE
 - RAILROAD
 - INACTIVE RAILROAD
 - PUBLIC LAND - NATIONAL FOREST
 - PUBLIC LAND - STATE/MUNICIPAL
 - NATIONAL FOREST ROAD
 - USGH UNITED STATES GOV. HWY.

- POLITICAL SUBDIVISIONS**
- STATE BOUNDARY
 - COUNTY BOUNDARY
 - TOWN BOUNDARY
 - VILLAGE BOUNDARY
 - URBAN COMPACT BOUNDARY
 - WATER BODY
 - STREAM OR BROOK
- BRIDGE OR CULVERT**
- BRIDGE OR CULVERT > 20'
 - BRIDGE OR CULVERT 6' - 20'
 - BIKE PATH STRUCTURE
 - VT CULVERTS BRIDGE
 - VT CULVERTS CULVERT > 6'
 - STATE BRIDGE OR CULVERT IDENTIFIER
 - TOWN BRIDGE OR CULVERT IDENTIFIER

- FEDERAL CLASSIFICATION IDENTIFIER**
- MA MINOR ARTERIAL
 - MJC MAJOR COLLECTOR
 - MNC MINOR COLLECTOR
 - PA PRINCIPAL ARTERIAL

DISCLAIMER:
The untraveled highways (laid-out town highways), discontinued highways, and legal trails herein are those of which the Agency of Transportation has record; others may exist.

Highway and bridge data by the Agency of Transportation. Town short structures drawn from the VT CULVERTS (formerly VOBCIT) online database. All other data from the Vermont Open Geodata Portal. Only named streams shown.

Vermont State Plane Coordinate System
North American Datum of 1983
SPCS_Zone_Identifier: 4400
Geodetic Reference System 80
4,000-meter grid, Easting - Northing