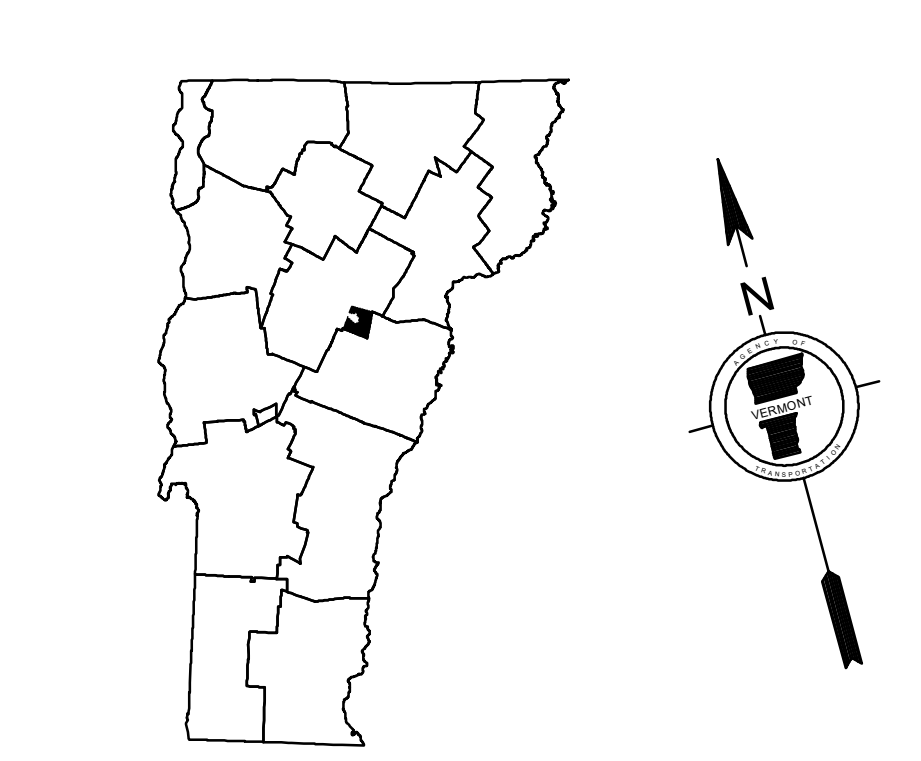
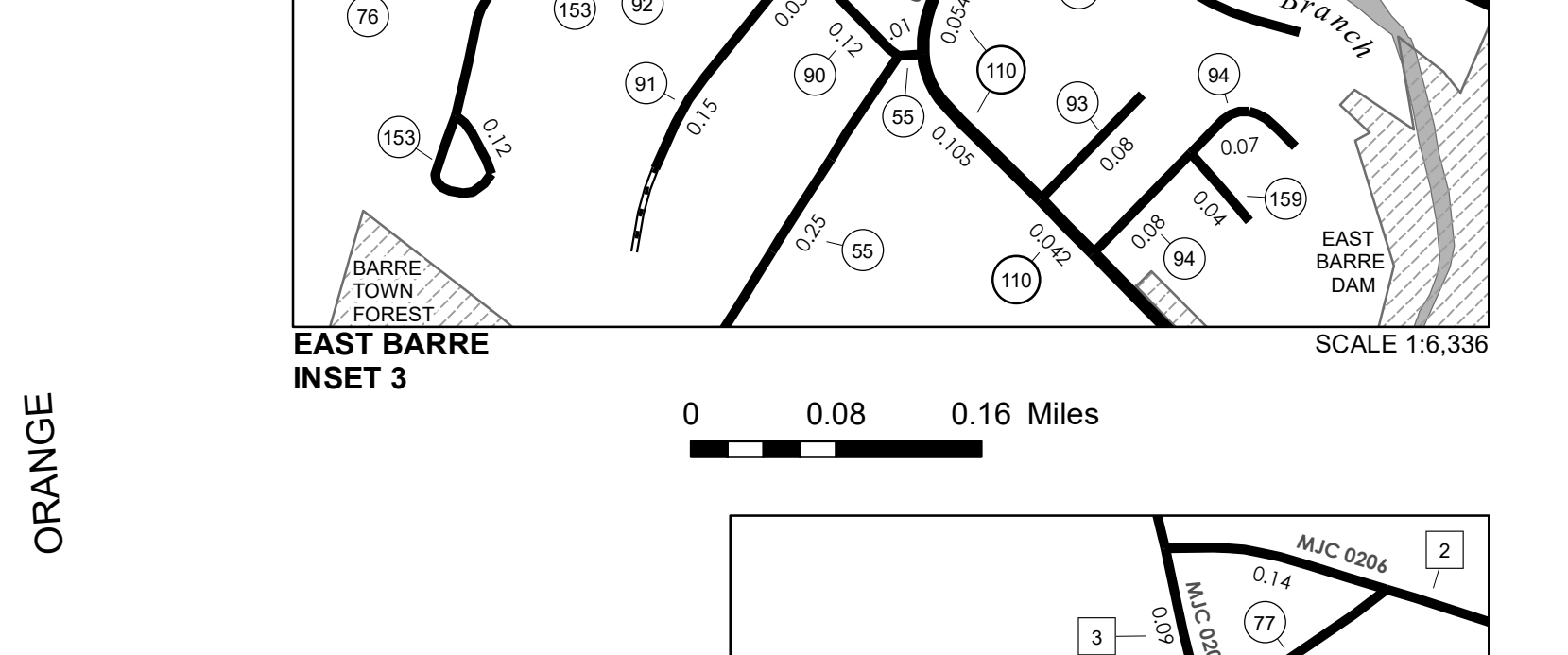
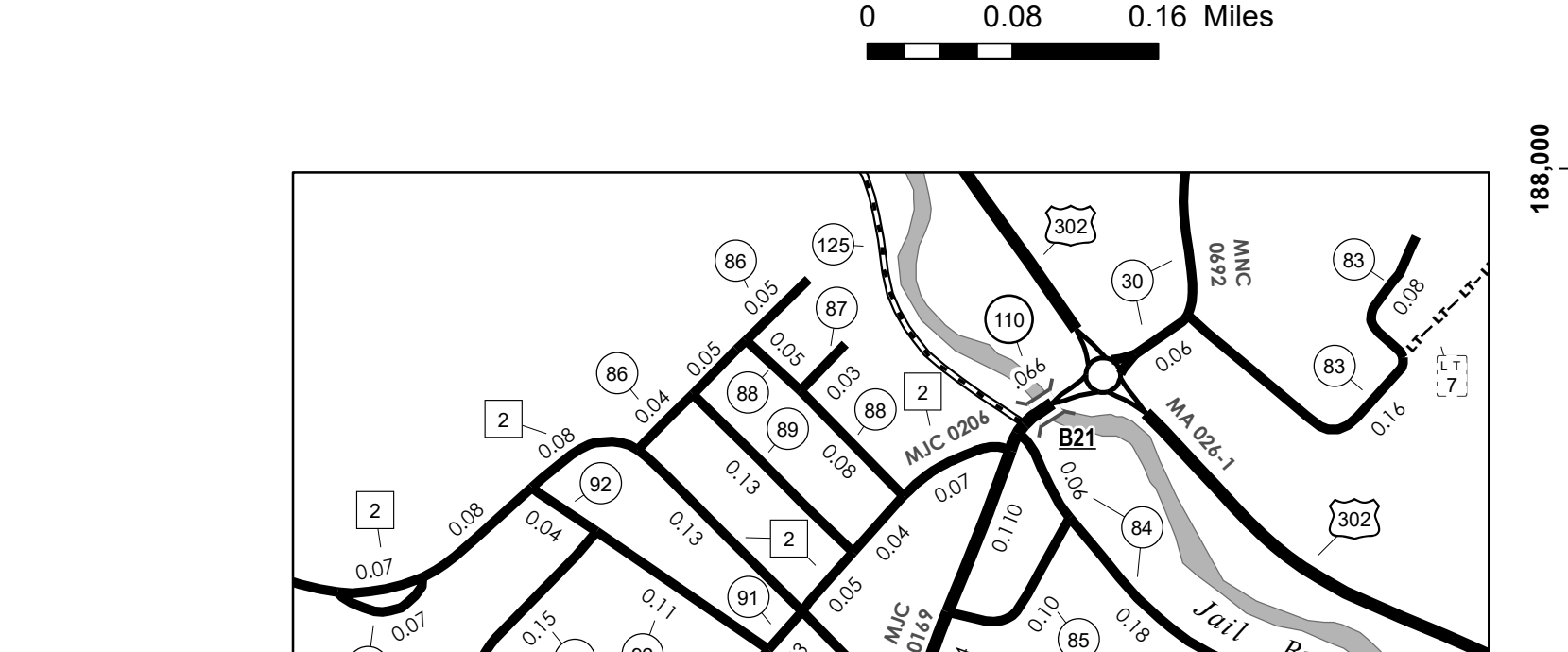
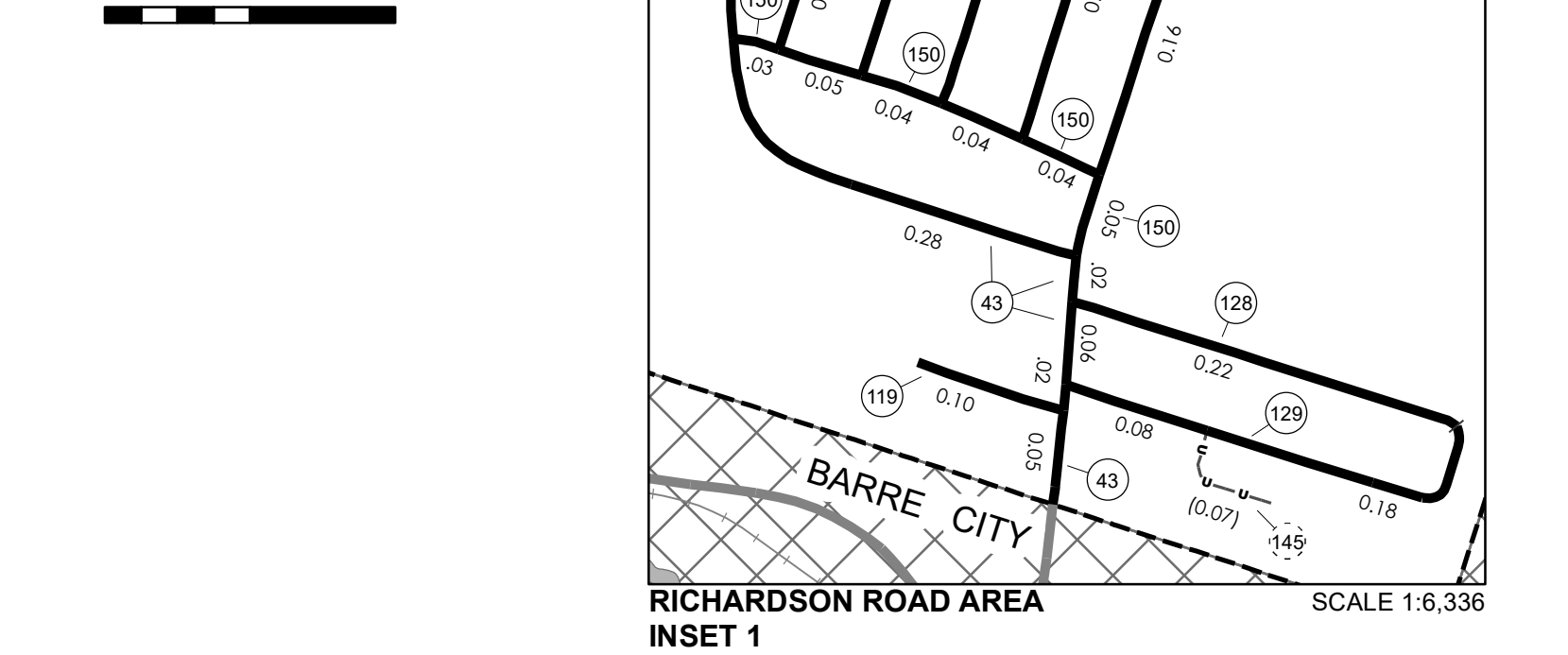
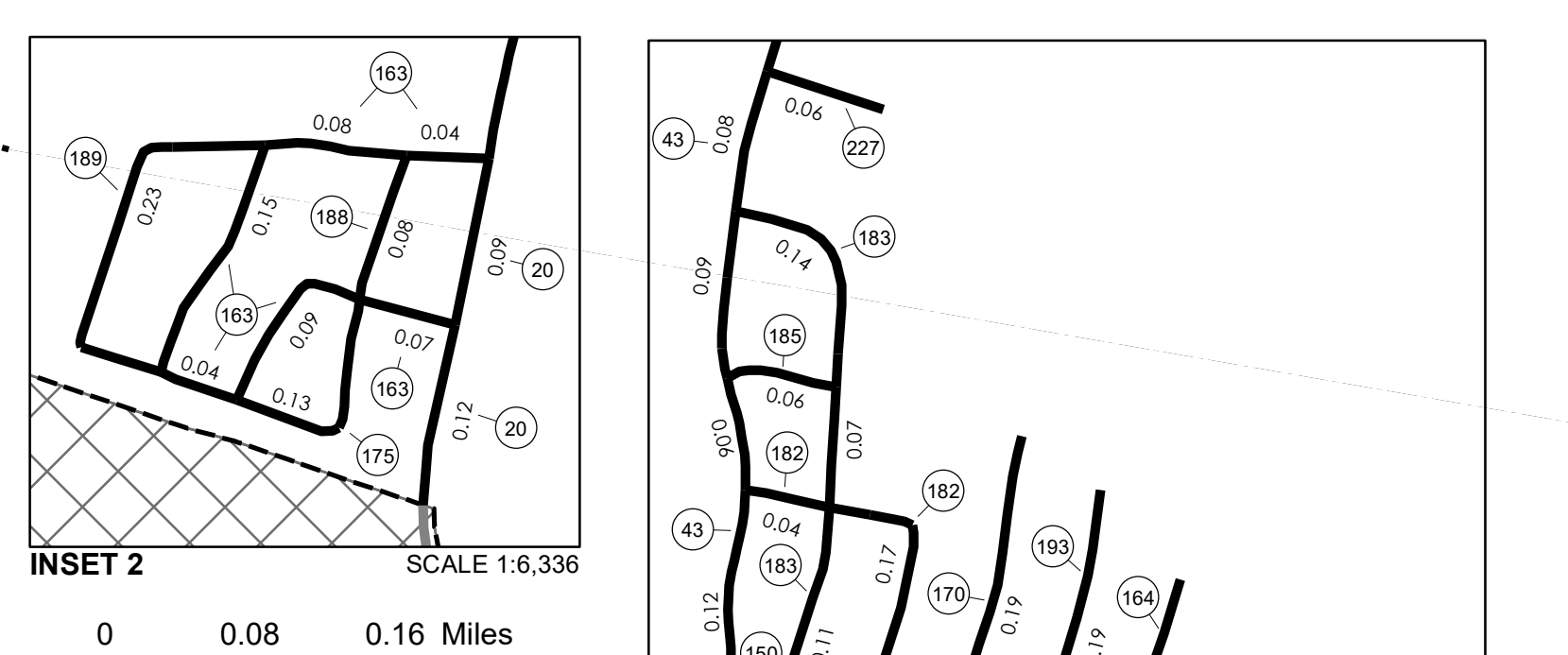
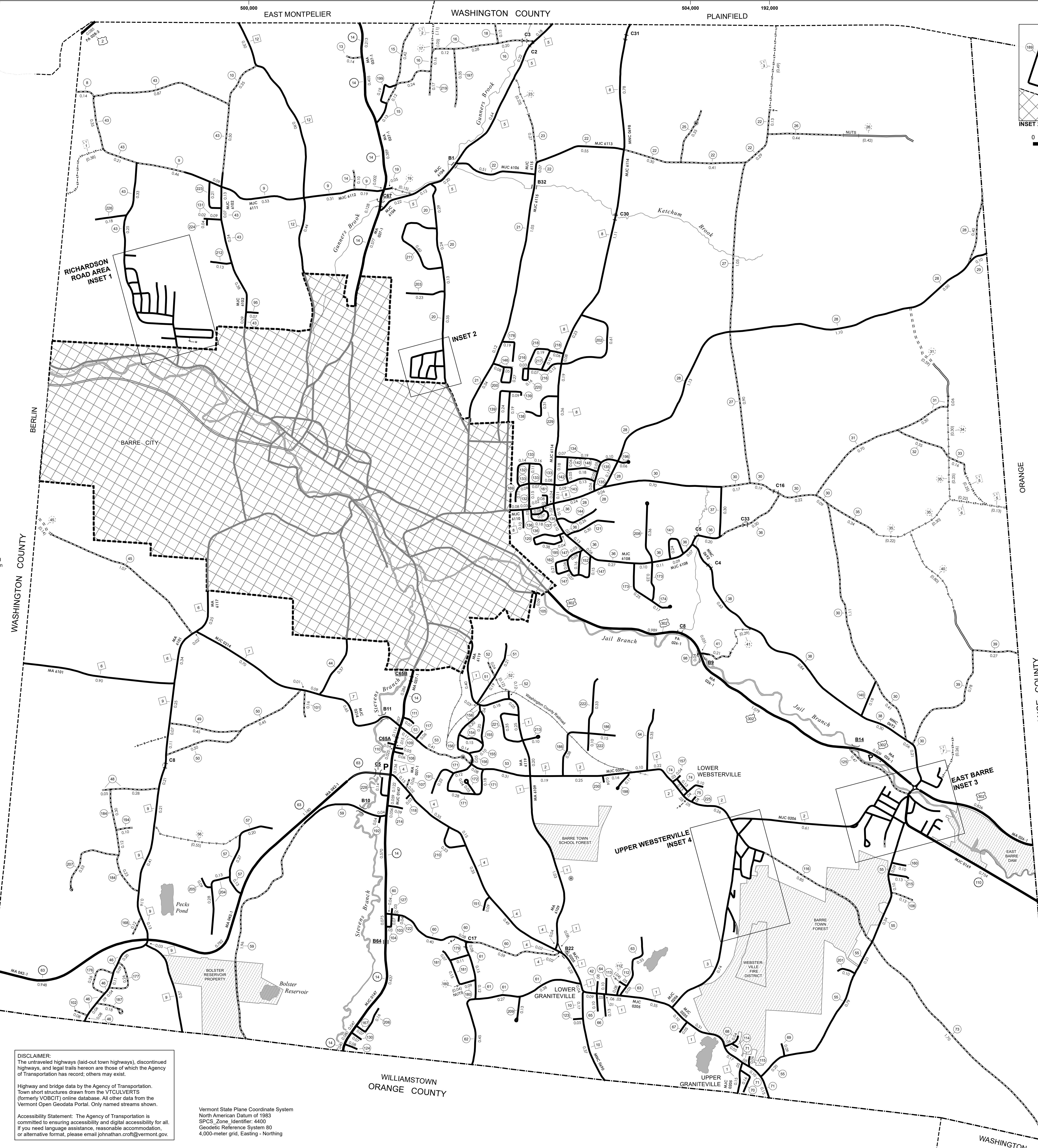


TOWN HWY. No.	CLASS 3	CLASS 4	LENGTH IN MILES	TOWN HWY. No.	CLASS 3	CLASS 4	LENGTH IN MILES	TOWN HWY. No.	CLASS 3	CLASS 4	LENGTH IN MILES
8			0.14	84			0.24	159			0.04
9			1.58	85			0.10	160			0.10
10			0.35	86			0.14	161			0.08
13			0.14	87			0.03	162			0.21
14			0.10	88			0.13	163			0.47
15			0.87	89			0.13	164			0.16
16			1.00	90			0.12	167			0.07
17		(0.05)		91			0.18	168			0.12
18			0.13	92			0.11	169			0.11
19		(0.15)		93			0.08	170			0.19
20			1.22	94			0.15	171			0.58
21			1.51	95			0.07	172			0.09
22		(0.23)		96			0.04	173			0.48
23			0.35	97			0.09	174			0.17
25				100				175			0.13
26		(0.33)		101			0.16	176			0.26
27			1.95	102			0.08	177			0.26
28			3.60	103			0.07	178			0.19
29			0.10	104			0.03	179			0.11
30			3.22	105			0.09	180			0.09
31		(0.59)		106			0.13	181			0.22
32			0.35	107			0.06	182			0.21
33			0.16	108			0.06	183			0.32
34		(0.30)		109			0.05	184			0.65
35		(0.77)		110			0.04	185			0.06
36			1.75	111			0.07	186			0.53
37			0.30	112			0.05	187			0.18
38			1.77	113			0.08	188			0.08
39			1.05	114			0.05	189			0.23
40		(0.80)		115			0.06	191			0.22
41		(0.29)		116			1.05	192			0.04
42			0.08	117			0.06	193			0.19
43			4.20	118			0.03	194			0.10
44			0.37	119			0.10	195			0.42
45		(0.14)		120			0.10	196			0.06
46			0.67	121			0.30	197			0.35
48			0.33	122			0.04	198			0.11
49			0.45	123			0.05	199			0.19
50			0.95	124			0.08	200			0.27
51			0.40	125			0.47	201			0.47
52		(0.12)		127			0.03	202			0.61
53			0.91	128			0.22	203			0.23
54			0.35	129			0.26	204			0.41
55			1.99	130			0.07	205			0.09
56		(0.55)		131			0.11	206			0.16
57			0.60	132			0.26	207			0.53
59			2.00	133			0.51	208			0.36
60			1.16	134			0.26	209			0.13
61			1.00	135			0.26	210			0.23
62			0.45	136			0.23	211			0.60
63			0.40	137			0.07	212			0.13
64			0.10	138			0.19	213			0.10
65			0.10	139			0.33	214			0.09
66			0.13	140			0.18	215			0.13
67			0.05	141			0.24	216			0.22
68			0.10	142			0.11	217			0.12
69			0.09	143			0.22	218			0.25
70			0.16	144			0.26	219			0.17
71			0.30	145				220			0.16
73			1.70	146			0.13	221			0.35
74			0.16	147			0.40	222			0.43
75			0.14	148			0.18	223			0.21
76			0.07	150			0.26	224			0.04
77			0.10	151			0.09	225			0.04
78			0.07	152			0.16	226			0.18
79			0.06	153			0.27	227			0.06
80			0.42	154			0.15	228			0.14
81			0.10	155			0.30	229			0.31
82			0.15	156			0.43	230			0.04
83			0.24	157			0.04				
			TOTAL	74.03			4.51				

CLASS	LENGTH IN MILES	TOTAL CLASS	LENGTH IN MILES
CLASS 2			
TH-1	3.770		
TH-2	2.660		
TH-3	1.270		
TH-4	1.590		
TH-5	1.590		
TH-6	1.510		
TH-7	1.450		
TH-8	3.320		
TH-9	2.150		
TH-10	0.540		
TH-12	1.640		
TOTAL CLASS 2	21.480		
CLASS 2 - Ramps			
TH-1	0.080		
TOTAL CLASS 2 - Ramps	0.080		
CLASS 3			
TOTAL CLASS 3	74.03		
TOTAL TOWN	95.590		
STATE HIGHWAY			
VT-14	4.033		
VT-63	2.910		
VT-110	1.131		
TOTAL STATE HIGHWAY	8.074		
US HIGHWAY			
US-2	0.085		
US-302	3.413		
TOTAL US HIGHWAY	3.498		
US HIGHWAY - Ramps			
US-302	0.021		
TOTAL US HIGHWAY - Ramps	0.021		
TOTAL STATE	11.593		
TOTAL, TRAVELED HIGHWAYS, FEB. 10, 2026: 107.183			
<small>(Excludes Class 4 and Legal Trail Mileage)</small>			

- HIGHWAYS**
- INTERSTATE
 - U.S. ROUTE
 - STATE ROUTE
 - CLASS 1
 - CLASS 2
 - CLASS 3
 - CLASS 4
 - LEGAL TRAIL
 - GRAVEL
 - SOIL OR GRADED AND DRAINED EARTH
 - UNIMPROVED OR PRIMITIVE
 - IMPASSABLE OR UNTRAVELED
 - LEGAL TRAIL
 - DISCONTINUED
 - HIGHWAY CLASS CHANGE
 - RAILROAD
 - INACTIVE RAILROAD
 - PUBLIC LAND - NATIONAL FOREST
 - PUBLIC LAND - STATE/MUNICIPAL
- POLITICAL SUBDIVISIONS**
- STATE BOUNDARY
 - COUNTY BOUNDARY
 - TOWN BOUNDARY
 - VILLAGE BOUNDARY
 - URBAN COMPACT BOUNDARY
 - WATER BODY
 - STREAM OR BROOK
 - BRIDGE OR CULVERT
 - BRIDGE OR CULVERT > 20'
 - BRIDGE OR CULVERT 6' - 20'
 - BIKE PATH STRUCTURE
 - VT CULVERTS BRIDGE
 - VT CULVERTS CULVERT > 6'
 - B34 / C34 STATE BRIDGE OR CULVERT IDENTIFIER
 - B4 / C4 TOWN BRIDGE OR CULVERT IDENTIFIER
 - NFR NATIONAL FOREST ROAD
 - ACE ARMY CORPS OF ENGINEERS
 - USOH UNITED STATES GOV. HWY.
 - P PARK AND RIDE
- FEDERAL CLASSIFICATION IDENTIFIER**
- MA MINOR ARTERIAL
 - MJC MAJOR COLLECTOR
 - MNC MINOR COLLECTOR
 - PA PRINCIPAL ARTERIAL



VERMONT
GENERAL HIGHWAY MAP
Town of Barre
 WASHINGTON COUNTY
 Transportation District #6
 Prepared by the
 Vermont Agency of Transportation
 Highway Division
 in cooperation with
 U.S. Department of Transportation
 Federal Highway Administration
 Mileage as of February 10, 2026
 Map prepared May 11, 2026
 SCALE 1:12,672
 0.15 0 0.15 0.3 0.45 0.6
 Miles
 0.2 0 0.2 0.4 0.6 0.8
 Kilometers