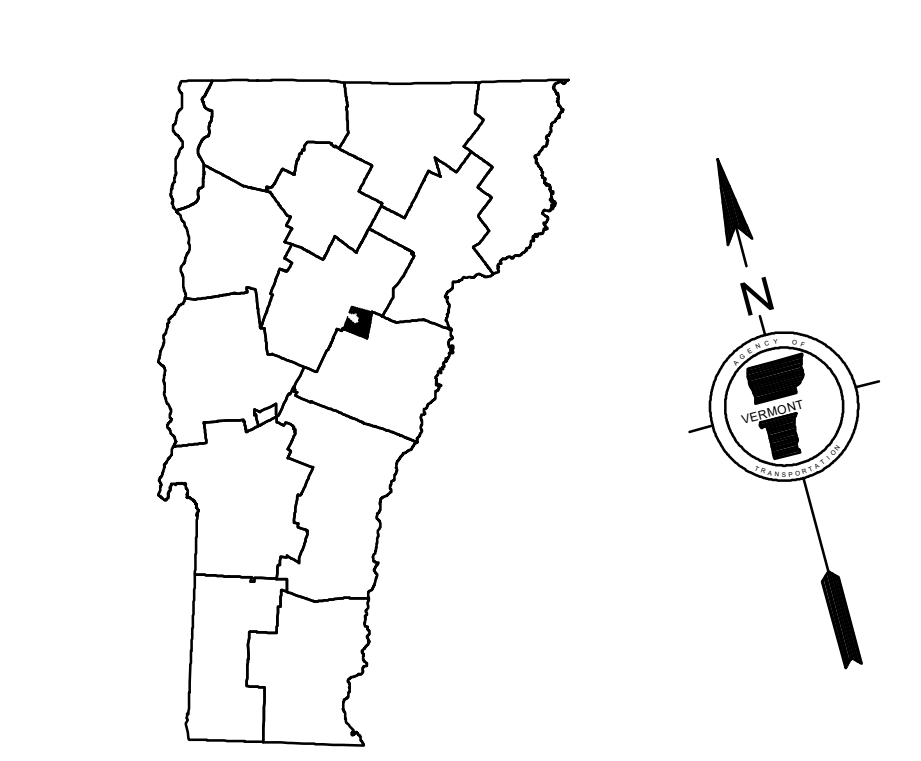
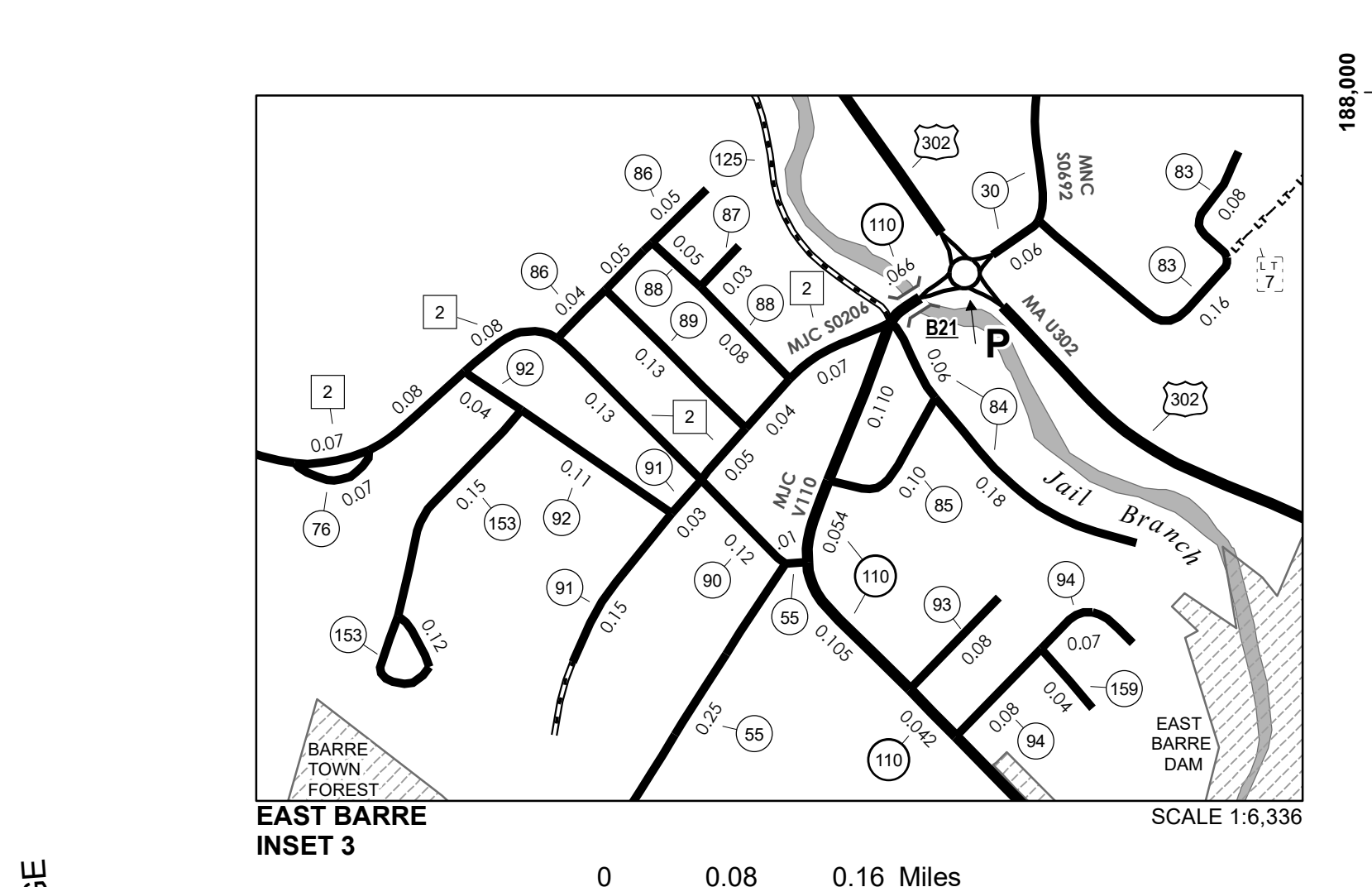
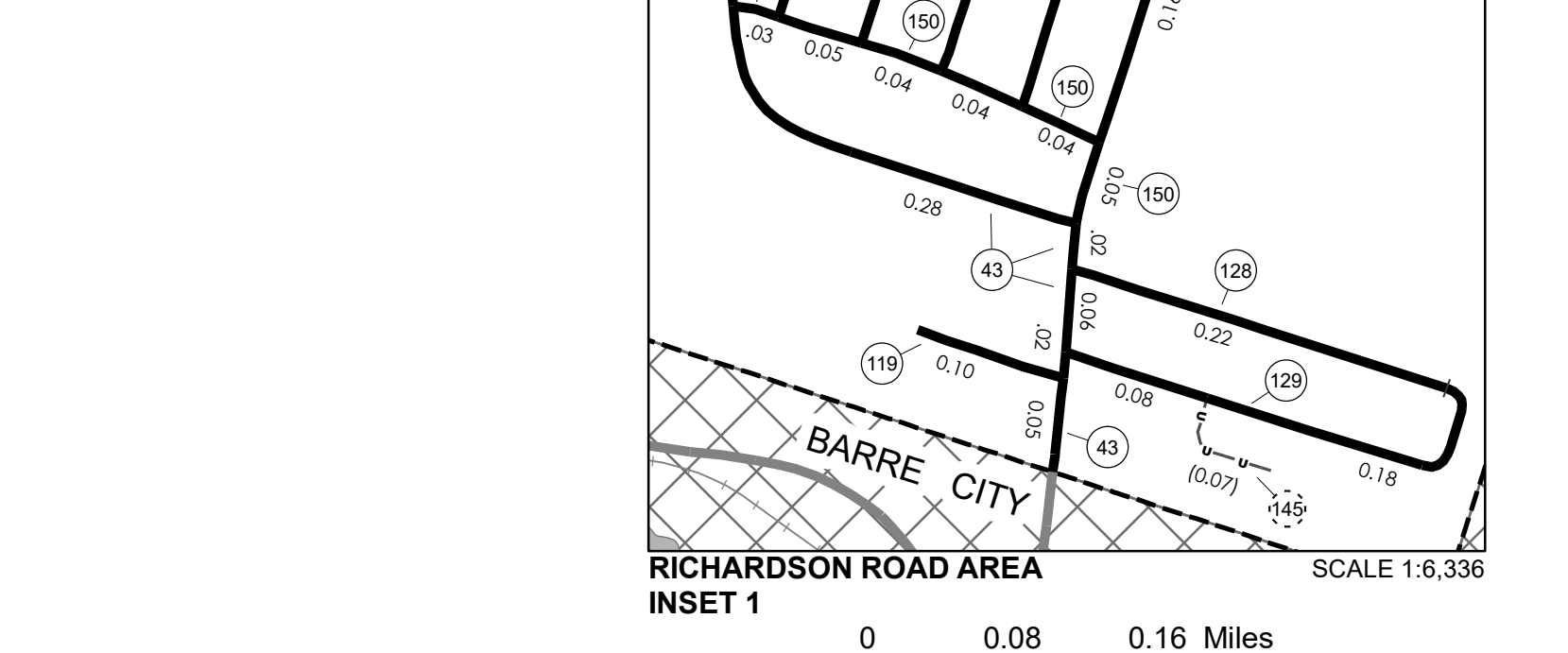
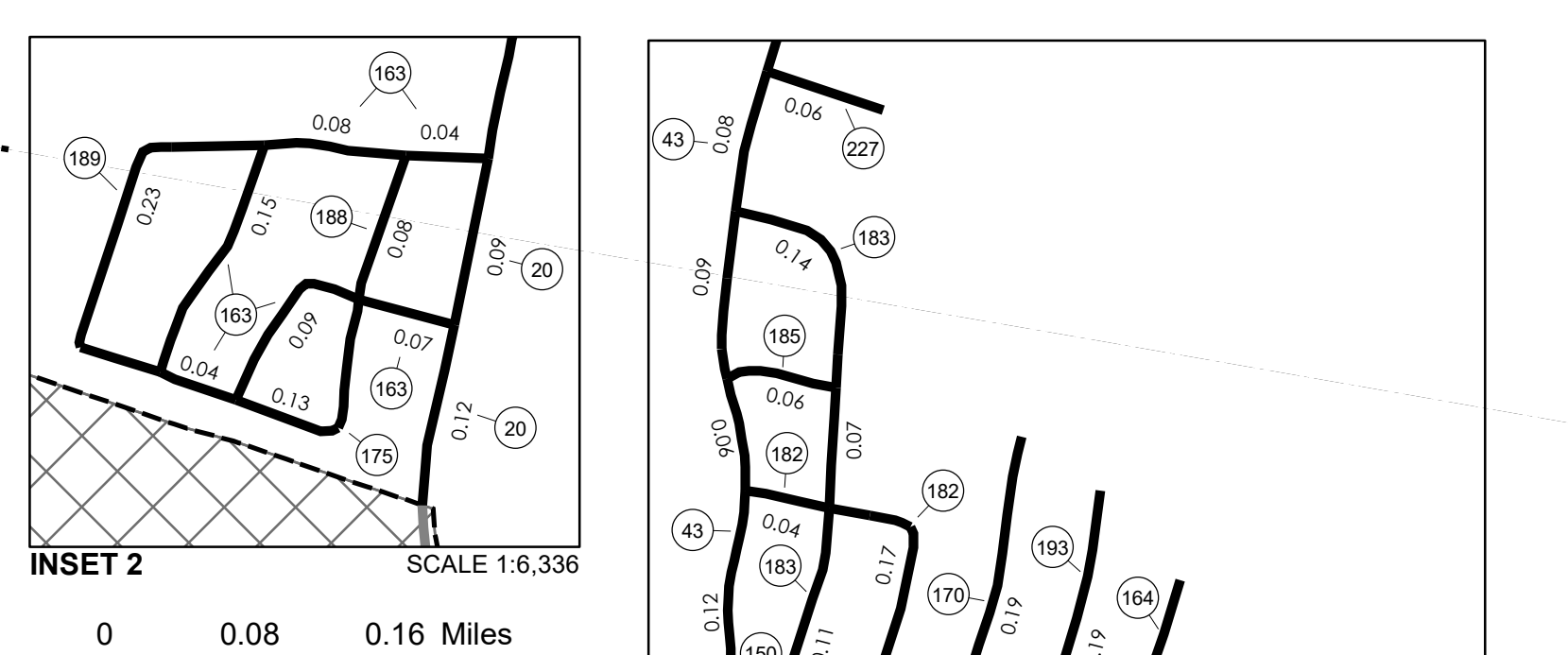
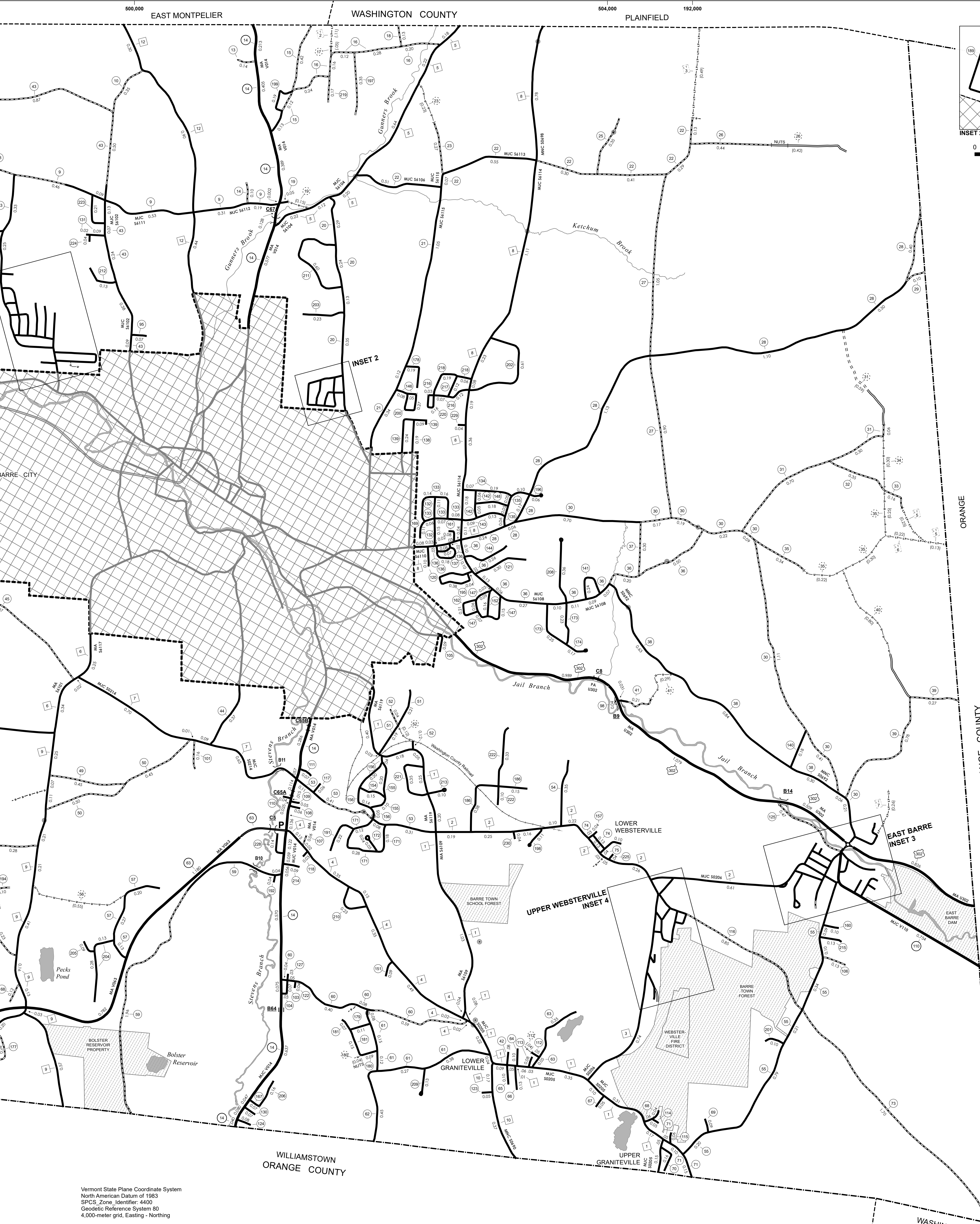


TOWN HWY. No.	CLASS 3	CLASS 4	LENGTH IN MILES	TOWN HWY. No.	CLASS 3	CLASS 4	LENGTH IN MILES	TOWN HWY. No.	CLASS 3	CLASS 4	LENGTH IN MILES
8	0.14		84	0.24	159	0.04					
9	1.58		85	0.10	160	0.10					
10	0.35		86	0.14	161	0.08					
13	0.14		87	0.03	162	0.21					
14	0.10		88	0.13	163	0.47					
15	0.87		89	0.16	164	0.16					
16	1.00		90	0.12	167	0.07					
17		(0.05)	91	0.18	168	0.12					
18	0.13		92	0.08	169	0.11					
19	0.05	(0.15)	93	0.08	170	0.19					
20	1.22		94	0.15	171	0.58					
21	1.51		95	0.07	172	0.09					
22	2.26		98	0.04	173	0.48					
23	0.27	(0.23)	99	0.09	174	0.17					
25	0.35		100		175	0.13					
26	0.44	(0.33)	101	0.16	176	0.26					
27	1.95		102	0.08	177	0.26					
28	3.60		103	0.07	178	0.19					
29	0.10		104	0.03	179	0.11					
30	3.22		105	0.09	180	0.09					
31	1.06	(0.59)	106	0.13	181	0.22					
32	0.35		107	0.06	182	0.21					
33	0.16		108	0.06	183	0.32					
34		(0.30)	109	0.05	184	0.65					
35	0.34	(0.77)	110	0.04	185	0.06					
36	1.75		111	0.07	186	0.53					
37	0.30		112	0.05	187	0.18					
38	1.77		113	0.08	188	0.08					
39	1.05		114	0.05	189	0.23					
40		(0.80)	115	0.06	191	0.22					
41	0.21	(0.29)	116	1.05	192	0.04					
42	0.08		117	0.06	193	0.17					
43	4.20		118	0.03	194	0.10					
44	0.37		119	0.10	195	0.42					
45		(0.14)	120	0.10	196	0.06					
46	0.67		121	0.30	197	0.35					
48	0.53		122	0.04	198	0.11					
49	0.45		123	0.05	199	0.19					
50	0.95		124	0.08	200	0.27					
51		(0.12)	125	0.47	201	0.41					
52	0.16		127	0.03	202	0.61					
53	0.91		128	0.22	203	0.23					
54	0.35		129	0.25	204	0.41					
55	1.99		130	0.07	205	0.09					
56		(0.55)	131	0.11	206	0.16					
57	0.60		132	0.26	207	0.53					
59	2.00		133	0.51	208	0.36					
60	1.16		134	0.26	209	0.13					
61	1.00		135	0.26	210	0.23					
62	0.45		136	0.23	211	0.60					
63	0.40		137	0.07	212	0.13					
64	0.10		138	0.19	213	0.10					
65	0.10		139	0.33	214	0.09					
66	0.13		140	0.18	215	0.13					
67	0.05		141	0.24	216	0.22					
68	0.10		142	0.11	217	0.12					
69	0.09		143	0.22	218	0.25					
70	0.16		144	0.26	219	0.17					
71	0.30	(0.07)	145		220	0.16					
73	1.70		146	0.13	221	0.35					
74	0.16		147	0.40	222	0.43					
75	0.14		148	0.18	223	0.21					
76	0.07		150	0.25	224	0.04					
77	0.10		151	0.09	225	0.04					
78	0.07		152	0.16	226	0.18					
79	0.06		153	0.27	227	0.06					
80	0.42		154	0.15	228	0.14					
81	0.10		155	0.30	229	0.04					
82	0.15		156	0.43	230	0.04					
83	0.24		157	0.04							
TOTAL			73.76	4.51							

CLASS 2	LENGTH IN MILES	TOWN HWY. No.	LENGTH IN MILES
TH-1	3.770	26	(0.09)
TH-2	2.660	25	(0.04)
TH-3	1.270	190	(0.04)
TH-4	1.590		
TH-5	1.590		
TH-6	1.510		
TH-7	1.450		
TH-8	3.320		
TH-9	2.150		
TH-10	0.540		
TH-12	1.640		
TOTAL CLASS 2	21.480		
CLASS 2 - Ramps	0.080		
TH-1	0.080		
TOTAL CLASS 2 - Ramps	0.080		
CLASS 3	73.76		
STATE HIGHWAY			
VT-14	4.033		
VT-63	2.910		
VT-110	1.131		
TOTAL STATE HIGHWAY	8.074		
US HIGHWAY			
US-2	0.085		
US-302	3.413		
TOTAL US HIGHWAY	3.498		
US HIGHWAY - Ramps	0.021		
US-302	0.021		
TOTAL US HIGHWAY - Ramps	0.021		
TOTAL STATE	11.593		
TOTAL TRAVELED HIGHWAYS, FEB. 10, 2019	106.913		

- HIGHWAYS**
 - INTERSTATE
 - U.S. ROUTE
 - STATE ROUTE
 - CLASS 1
 - CLASS 2
 - CLASS 3
 - CLASS 4
 - LEGAL TRAIL
 - GRAVEL
 - SOIL OR GRADED AND DRAINED EARTH
 - UNIMPROVED OR PRIMITIVE
 - IMPASSABLE OR UNTRAVELED
 - LEGAL TRAIL
 - DISCONTINUED
 - HIGHWAY CLASS CHANGE
 - RAILROAD
 - INACTIVE RAILROAD
 - PUBLIC LAND - NATIONAL FOREST
 - PUBLIC LAND - STATE/MUNICIPAL
- POLITICAL SUBDIVISIONS**
 - STATE BOUNDARY
 - COUNTY BOUNDARY
 - TOWN BOUNDARY
 - VILLAGE BOUNDARY
 - URBAN COMPACT BOUNDARY
 - WATER BODY
 - STREAM OR BROOK
- BRIDGE OR CULVERT**
 - BRIDGE OR CULVERT > 20'
 - BRIDGE OR CULVERT 6' - 20'
 - BIKE PATH STRUCTURE
 - VT CULVERTS BRIDGE
 - VT CULVERTS CULVERT > 6'
 - B34 / C34 TOWN BRIDGE OR CULVERT IDENTIFIER
 - NFR NATIONAL FOREST ROAD
 - SFH STATE FOREST HIGHWAY
 - P PARK AND RIDE
 - FEDERAL CLASSIFICATION IDENTIFIER**
 - MA MINOR ARTERIAL
 - MJC MAJOR COLLECTOR
 - MNC MINOR COLLECTOR
 - PA PRINCIPAL ARTERIAL

DISCLAIMER:
The untraveled highways (laid-out town highways), discontinued highways, and legal trails hereon are those of which the Agency of Transportation has record; others may exist.
Highway and bridge data by the Agency of Transportation.
Town sheet structures drawn from the VT CULVERTS (formerly VOBCT) online database. All other data from the Vermont Open Geodata Portal. Only named streams shown.



VERMONT
GENERAL HIGHWAY MAP
Town of Barre
WASHINGTON COUNTY
Transportation District #7
Prepared by the
Vermont Agency of Transportation
Division of Policy, Planning and Intermodal Development
in cooperation with
U.S. Department of Transportation
Federal Highway Administration
Map as of February 10, 2019
Map prepared April 26, 2019
SCALE 1:12,672
0 0.15 0.3 0.45 0.6 Miles
0 0.2 0.4 0.6 0.8 Kilometers