

TOWN HWY. No.	CLASS 3	CLASS 4	LENGTH IN MILES	TOWN HWY. No.	CLASS 3	CLASS 4	LENGTH IN MILES	TOWN HWY. No.	CLASS 3	CLASS 4	LENGTH IN MILES
8	0.14		84	0.24	159	0.04	159	0.04			0.04
9	1.58		85	0.10	160	0.10	160	0.10			0.10
10	0.35		86	0.14	161	0.08	161	0.08			0.08
13	0.14		87	0.03	162	0.21	162	0.21			0.21
14	0.10		88	0.13	163	0.47	163	0.47			0.47
15	0.87		89	0.13	164	0.16	164	0.16			0.16
16	1.00		90	0.12	167	0.07	167	0.07			0.07
17		(0.05)	91	0.18	168	0.12	168	0.12			0.12
18	0.13		92	0.15	169	0.11	169	0.11			0.11
19	0.05	(0.15)	93	0.08	170	0.19	170	0.19			0.19
20	1.22		96	0.15	171	0.58	171	0.58			0.58
21	1.51		98	0.07	172	0.09	172	0.09			0.09
22	2.28		98	0.04	173	0.48	173	0.48			0.48
23	0.37	(0.23)	100	0.09	174	0.17	174	0.17			0.17
25	0.35		100		175	0.13	175	0.13			0.13
26	0.44	(0.33)	101	0.16	176	0.26	176	0.26			0.26
27	1.95		102	0.08	177	0.26	177	0.26			0.26
28	3.60		103	0.07	178	0.19	178	0.19			0.19
29	0.10		104	0.03	179	0.11	179	0.11			0.11
30	3.22		105	0.09	180	0.09	180	0.09			0.09
31	1.06	(0.59)	106	0.13	181	0.22	181	0.22			0.22
32	0.35		107	0.06	182	0.21	182	0.21			0.21
33	0.16		108	0.06	183	0.32	183	0.32			0.32
34		(0.30)	109	0.05	184	0.65	184	0.65			0.65
35	0.34	(0.77)	110	0.04	185	0.06	185	0.06			0.06
36	1.75		111	0.07	186	0.53	186	0.53			0.53
37	0.30		112	0.05	187	0.18	187	0.18			0.18
38	1.77		113	0.08	188	0.08	188	0.08			0.08
39	1.05		114	0.05	189	0.23	189	0.23			0.23
40		(0.80)	115	0.06	191	0.22	191	0.22			0.22
41	0.21	(0.29)	116	1.05	192	0.04	192	0.04			0.04
42	0.08		117	0.06	193	0.19	193	0.19			0.19
43	4.20		118	0.03	194	0.10	194	0.10			0.10
44	0.37		119	0.10	195	0.42	195	0.42			0.42
45	0.10	(0.14)	120	0.06	196	0.06	196	0.06			0.06
46	0.67		121	0.30	197	0.35	197	0.35			0.35
48	0.33		122	0.04	198	0.11	198	0.11			0.11
49	0.45		123	0.05	199	0.19	199	0.19			0.19
50	0.95		124	0.08	200	0.27	200	0.27			0.27
51	0.40		125	0.47	201	0.47	201	0.47			0.47
52	0.16	(0.12)	127	0.03	202	0.61	202	0.61			0.61
53	0.91		128	0.22	203	0.23	203	0.23			0.23
54	0.35		129	0.25	204	0.41	204	0.41			0.41
55	1.99		130	0.07	205	0.09	205	0.09			0.09
56		(0.55)	131	0.11	206	0.16	206	0.16			0.16
57	0.60		132	0.26	207	0.53	207	0.53			0.53
59	2.00		133	0.51	208	0.36	208	0.36			0.36
60	1.16		134	0.26	209	0.13	209	0.13			0.13
61	1.00		135	0.26	210	0.23	210	0.23			0.23
62	0.45		136	0.23	211	0.60	211	0.60			0.60
63	0.40		137	0.07	212	0.13	212	0.13			0.13
64	0.10		138	0.19	213	0.10	213	0.10			0.10
65	0.10		139	0.33	214	0.09	214	0.09			0.09
66	0.13		140	0.18	215	0.13	215	0.13			0.13
67	0.05		141	0.24	216	0.22	216	0.22			0.22
68	0.10		142	0.11	217	0.12	217	0.12			0.12
69	0.09		143	0.22	218	0.25	218	0.25			0.25
70	0.16		144	0.26	219	0.17	219	0.17			0.17
71	0.30		145		220	0.16	220	0.16			0.16
73	1.70		146	0.13	221	0.35	221	0.35			0.35
74	0.16		147	0.40	222	0.43	222	0.43			0.43
75	0.14		148	0.18	223	0.21	223	0.21			0.21
76	0.07		150	0.25	224	0.04	224	0.04			0.04
77	0.10		151	0.09	225	0.04	225	0.04			0.04
78	0.07		152	0.16	226	0.18	226	0.18			0.18
79	0.06		153	0.27	227	0.06	227	0.06			0.06
80	0.42		154	0.15	228	0.14	228	0.14			0.14
81	0.10		155	0.30	229	0.04	229	0.04			0.04
82	0.15		156	0.43							
83	0.24		157	0.04							
			TOTAL	73.72			4.51				

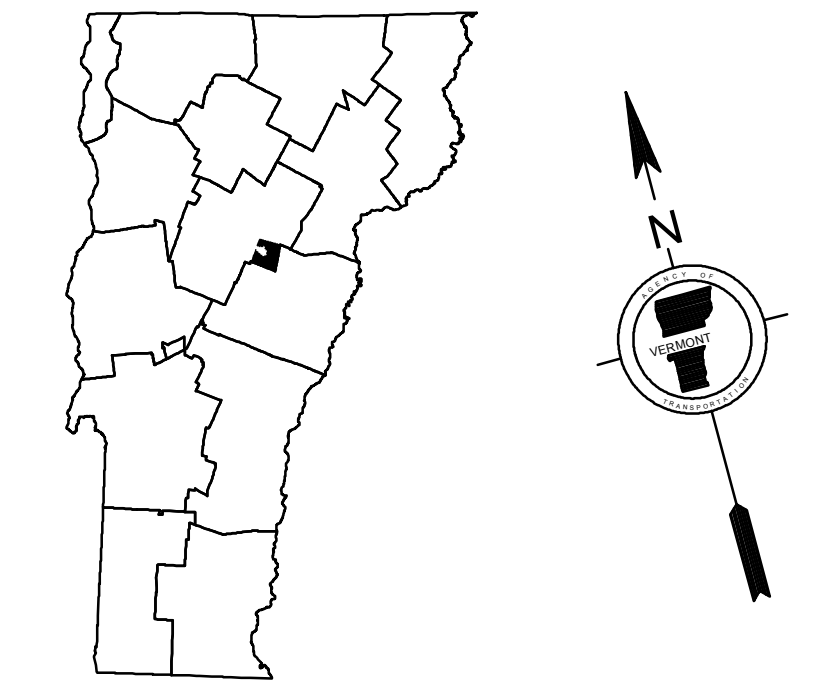
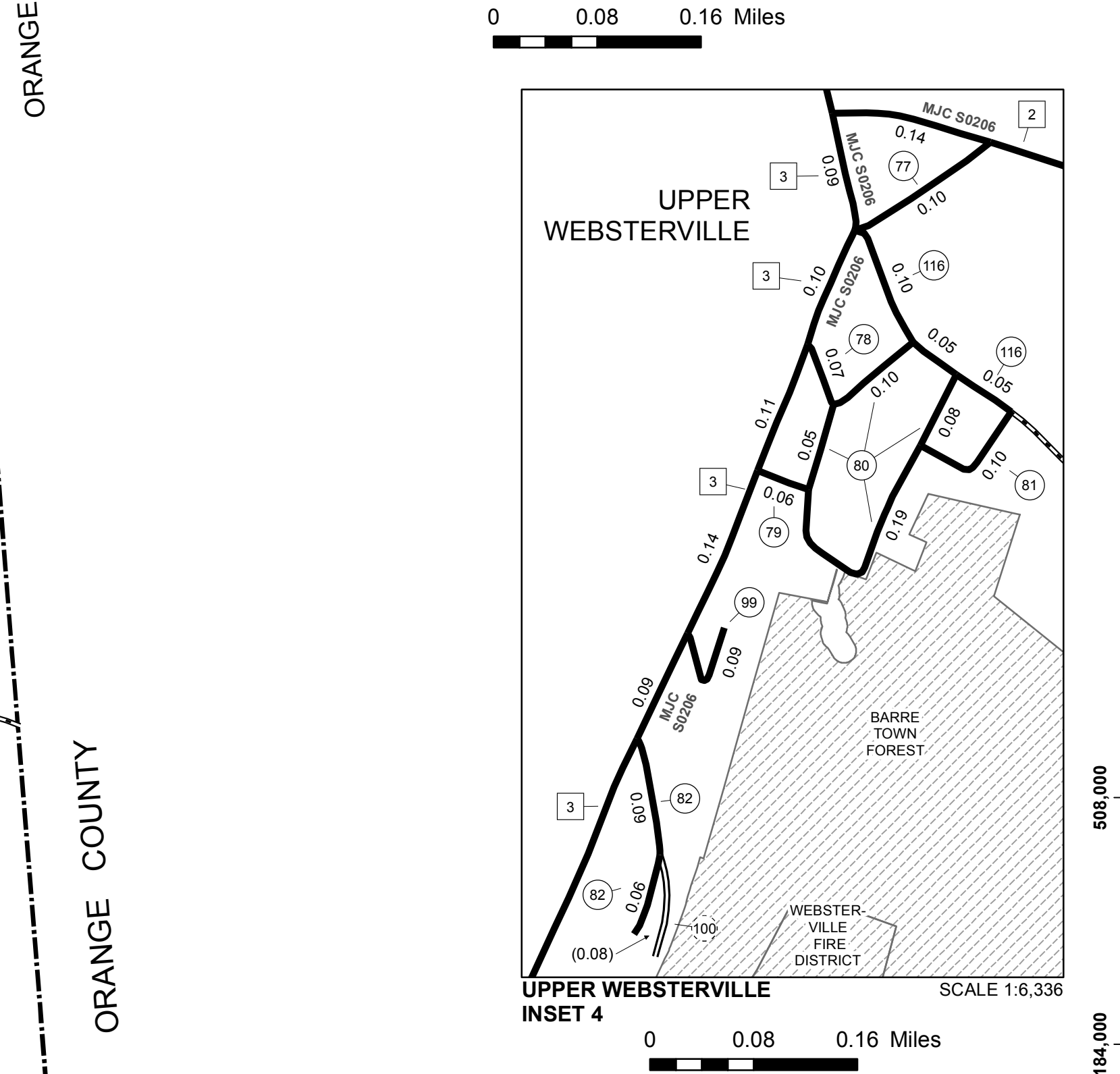
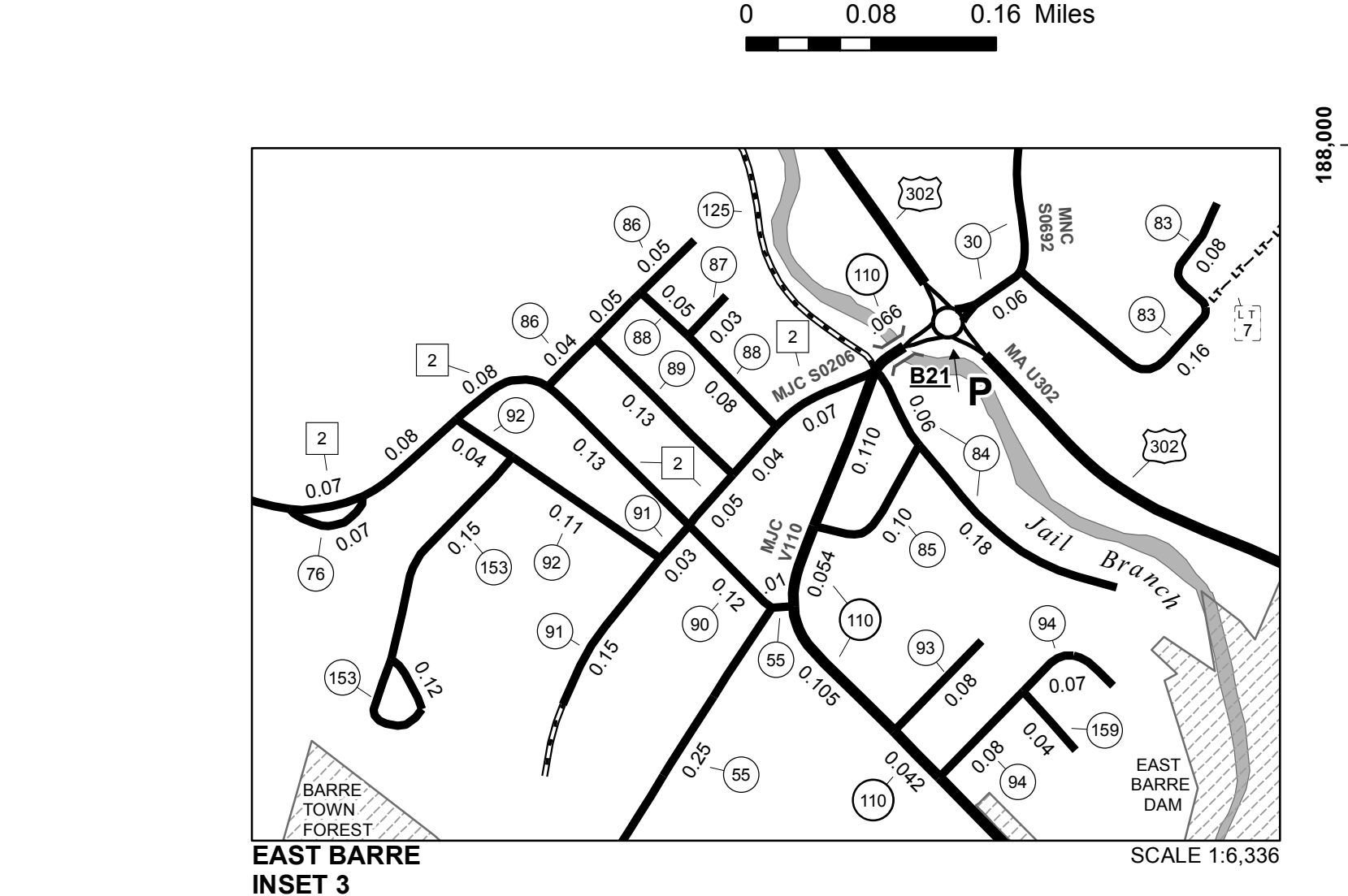
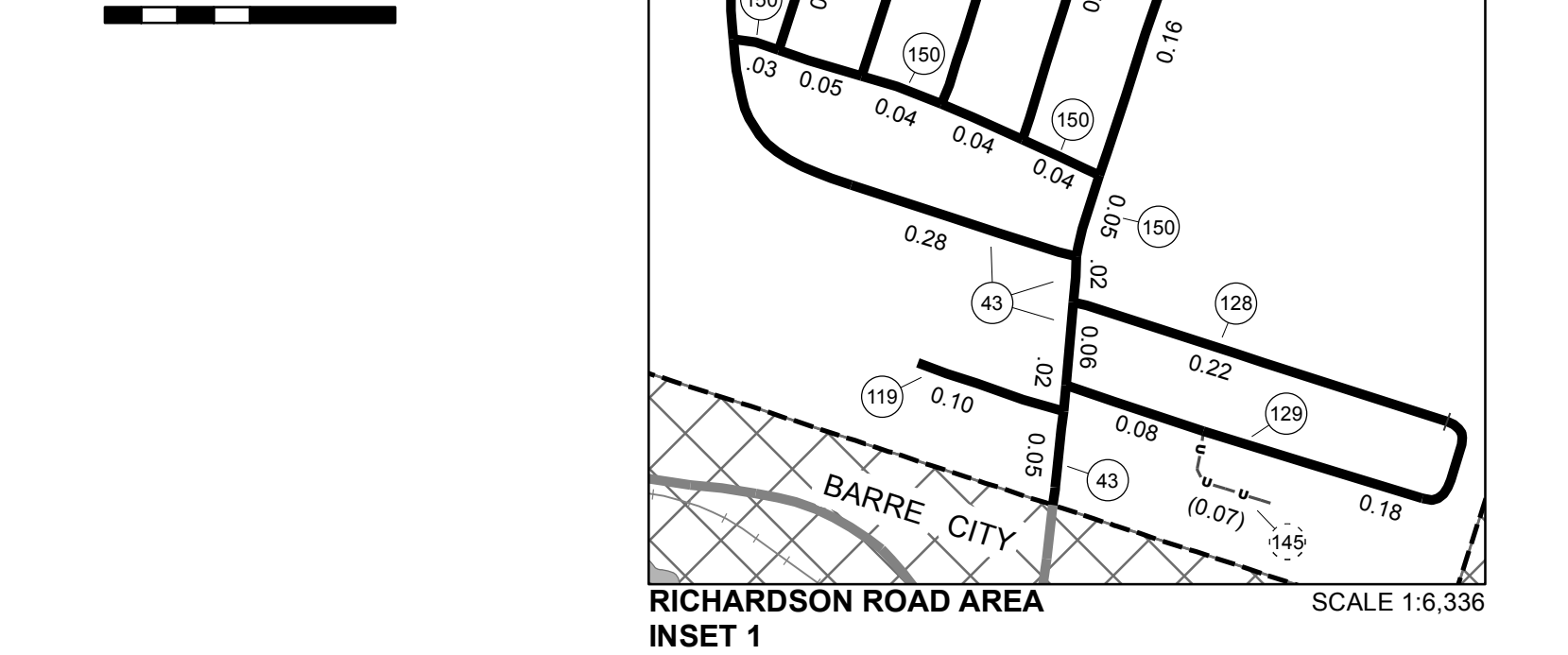
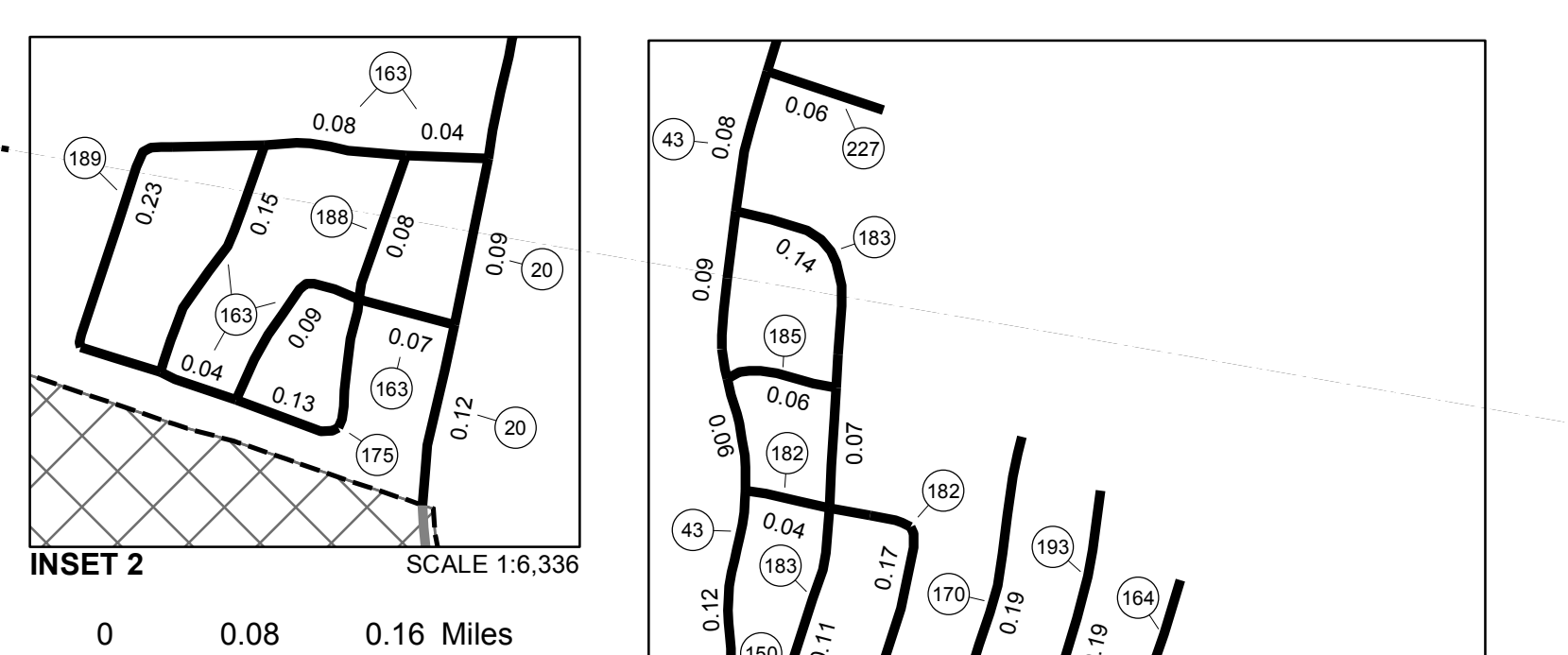
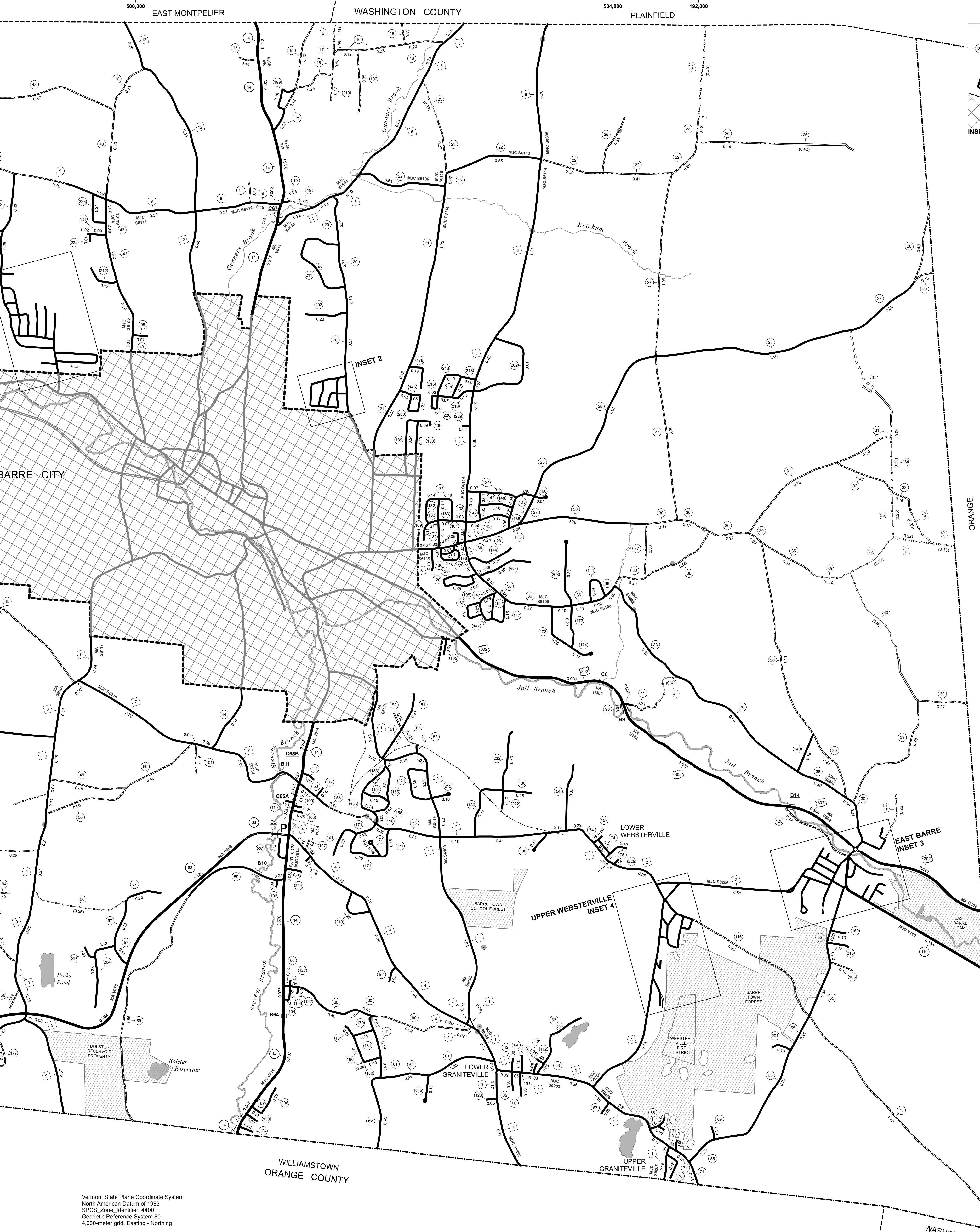
CLASS 2	LENGTH IN MILES	CLASS 3	LENGTH IN MILES
TH-1	3.770		
TH-2	2.660		
TH-3	1.270		
TH-4	1.590		
TH-5	1.590		
TH-6	1.510		
TH-7	1.450		
TH-8	3.320		
TH-9	2.150		
TH-10	0.540		
TH-12	1.640		
TOTAL CLASS 2	21.480		
CLASS 2 - Ramps	0.080		
TH-1	0.080		
TOTAL CLASS 2 - Ramps	0.080		
CLASS 3	73.72		
TOTAL CLASS 3	73.72		
TOTAL TOWN	95.280		
STATE HIGHWAY			
VT-14	4.033		
VT-63	2.910		
VT-110	1.131		
TOTAL STATE HIGHWAY	8.074		
US HIGHWAY			
US-2	0.085		
US-302	3.413		
TOTAL US HIGHWAY	3.498		
US HIGHWAY - Ramps	0.021		
US-302	0.021		
TOTAL US HIGHWAY - Ramps	0.021		
TOTAL STATE	11.593		
TOTAL, TRAVELED HIGHWAYS, FEB. 10, 2017: 106.873			

TOWN HWY. No.	LENGTH IN MILES	LEGAL TRAIL	LENGTH IN MILES
25	(0.09)	1	(0.38)
180	(0.04)	2	(0.11)
		3	(0.49)
		5	(0.38)
		6	(0.22)
		7	(0.26)
TOTAL	0.13	TOTAL	1.84

*The sections of the town highways listed above are legally Class 3, but have been deemed "Not Up To Standard" and are functionally Class 4 Town Highways.

- HIGHWAYS**
 - INTERSTATE
 - U.S. ROUTE
 - STATE ROUTE
 - CLASS 1
 - CLASS 2
 - CLASS 3
 - CLASS 4
 - LEGAL TRAIL
 - GRAVEL
 - SOIL OR GRADED AND DRAINED EARTH
 - UNIMPROVED OR PRIMITIVE
 - IMPASSABLE OR UNTRAVELED
 - LEGAL TRAIL
 - DISCONTINUED
 - HIGHWAY CLASS CHANGE
 - RAILROAD
 - INACTIVE RAILROAD
 - PUBLIC LAND - NATIONAL FOREST
 - PUBLIC LAND - STATE/MUNICIPAL
- POLITICAL SUBDIVISIONS**
 - STATE BOUNDARY
 - COUNTY BOUNDARY
 - TOWN BOUNDARY
 - VILLAGE BOUNDARY
 - URBAN COMPACT BOUNDARY
 - WATER BODY
 - STREAM OR BROOK
- BRIDGE OR CULVERT**
 - BRIDGE OR CULVERT > 20'
 - BRIDGE OR CULVERT 6' - 20'
 - BIKE PATH STRUCTURE
 - VOBCIT BRIDGE
 - VOBCIT BRIDGE > 6'
 - B34 / C34 STATE BRIDGE OR CULVERT IDENTIFIER
 - B34 / C34 TOWN BRIDGE OR CULVERT IDENTIFIER
 - NFR NATIONAL FOREST ROAD
 - SFH STATE FOREST HIGHWAY
 - P PARK AND RIDE
- FEDERAL CLASSIFICATION IDENTIFIER**
 - MA MINOR ARTERIAL
 - MJC MAJOR COLLECTOR
 - MNC MINOR COLLECTOR
 - PA PRINCIPAL ARTERIAL

DISCLAIMER:
The untraveled highways (old-out town highways), discontinued highways, and legal trails herein are those of which the Agency of Transportation has record; others may exist.
Highway and bridge data by the Agency of Transportation. Town short structures drawn from the Vermont Online Bridge & Culvert Inventory Tool (VOBCIT) database. All other data from the Vermont Center for Geographic Information. Only named streams shown.



VERMONT
GENERAL HIGHWAY MAP
Town of Barre
WASHINGTON COUNTY
Transportation District #7
Prepared by the
Vermont Agency of Transportation
Division of Policy, Planning and Intermodal Development
in cooperation with
U.S. Department of Transportation
Federal Highway Administration
Map as of February 10, 2017
Map prepared June 30, 2017
SCALE 1:12,672
0 0.15 0.3 0.45 0.6 Miles
0.2 0.4 0.6 0.8 Kilometers