

TOWN HWY. NO.	LENGTH IN MILES CLASS 3	LENGTH IN MILES CLASS 4	TOWN HWY. NO.	LENGTH IN MILES CLASS 3	LENGTH IN MILES CLASS 4	TOWN HWY. NO.	LENGTH IN MILES CLASS 3	LENGTH IN MILES CLASS 4
8	0.14		83	0.24		159	0.04	
9	0.35		84	0.24		160	0.10	
10	0.14		85	0.10		161	0.08	
13	0.10		86	0.14		162	0.21	
14	0.10		87	0.03		163	0.47	
15	0.67		88	0.13		164	0.16	
16	1.00		89	0.13		167	0.07	
17		(0.05)	90	0.12		168	0.12	
18	0.13		91	0.18		169	0.11	
19	0.05	(0.15)	92	0.15		170	0.19	
20	1.22		93	0.08		171	0.58	
21			94	0.15		172	0.09	
22	2.26		95	0.07		173	0.48	
23	0.27	(0.23)	98	0.04		174	0.17	
24	0.35		99	0.09		175	0.13	
25	0.44	(0.33)	100		(0.08)	176	0.26	
26		(0.09)	101	0.16		177	0.26	
27	1.95		102	0.08		178	0.19	
28	3.60		103	0.07		179	0.11	
29	0.10		104	0.03		180	0.09	
30	3.21		105	0.09		180	0.22	(0.04)
31	1.05	(0.59)	106	0.13		181	0.22	
32	0.35		107	0.06		182	0.21	
33	0.16	(0.38)	108	0.06		183	0.32	
34	0.34	(0.30)	109	0.05		184	0.65	
35	0.34	(0.77)	110	0.04		185	0.06	
36	1.75		111	0.07		186	0.53	
37	0.30		112	0.05	(0.04)	187	0.18	
38	1.77		113	0.08		188	0.08	
39	1.05		114	0.05		189	0.23	
40		(0.80)	115	0.06		191	0.22	
41	0.21	(0.29)	116	1.05		192	0.04	
42	0.08		117	0.06		193	0.19	
43	4.20		118	0.03		194	0.10	
44	0.37		119	0.10		195	0.42	
45	1.07	(0.14)	120	0.10		196	0.06	
46	0.67		121	0.30		197	0.35	
48	0.33		122	0.04		198	0.11	
49	0.45		123	0.05		199	0.19	
50	0.07		124	0.08		200	0.27	
51	0.40		125	0.47		201	0.10	
52	0.16	(0.12)	126	0.07		202	0.61	
53	0.91		127	0.03		203	0.23	
54	0.35		128	0.11		204	0.41	
55	1.99		129	0.20		205	0.09	
56	0.60	(0.55)	130	0.07		206	0.16	
57	2.00		131	0.11		207	0.53	
59	2.00		132	0.26		208	0.36	
60	1.16		133	0.51		209	0.13	
61	1.00		134	0.26		210	0.23	
62	0.45		135	0.26		211	0.60	
63	0.40		136	0.23		212	0.13	
64	0.10		137	0.07		213	0.10	
65	0.10		138	0.19		214	0.09	
66	0.13		139	0.33		215	0.13	
67	0.05		140	0.18		216	0.22	
68	0.10		141	0.24		217	0.12	
69	0.09		142	0.11		218	0.25	
70	0.16		143	0.22		219	0.17	
71	0.30		144	0.26		220	0.16	
73	1.70		145		(0.07)	221	0.35	
74	0.16		146	0.13		222	0.31	
75	0.14		147	0.40		223	0.21	
76	0.07		148	0.18		224	0.04	
77	0.10		150	0.25		225	0.04	
78	0.07		151	0.09		226	0.18	
79	0.05		152	0.16		227	0.06	
80	0.52		153	0.27		227	0.06	
81	0.10		154	0.15		228	0.18	
82	0.15		155	0.30		229	0.18	
			156	0.43		230	0.18	
			157	0.04		231	0.18	

TOTAL 73.31 5.02
 * This portion of town highway is Class 3, but is functionally Class 4

CLASS	LENGTH IN MILES	LEGAL TRAIL NO.	LENGTH IN MILES
CLASS 2			
TH-1	3.850	1	(0.39)
TH-2	2.680	2	(0.11)
TH-3	1.270	3	(0.49)
TH-4	1.590	4	(0.08)
TH-5	1.580		
TH-6	1.510		
TH-7	1.450		
TH-8	3.320		
TH-9	2.150		
TH-10	0.540		
TH-12	1.640		
TOTAL CLASS 2	21.560		
CLASS 3			
TOTAL CLASS 3	73.310		
TOTAL TOWN	94.870		
STATE HIGHWAY			
VT-14	4.033		
VT-63	2.910		
VT-110	1.124		
TOTAL STATE HIGHWAY	8.067		
STATE HIGHWAY - Ramp			
VT-110	0.000		
TOTAL STATE HIGHWAY - Ramp	0.000		
US HIGHWAY			
US-2	0.085		
US-302	3.330		
TOTAL US HIGHWAY	3.415		
TOTAL STATE	11.482		

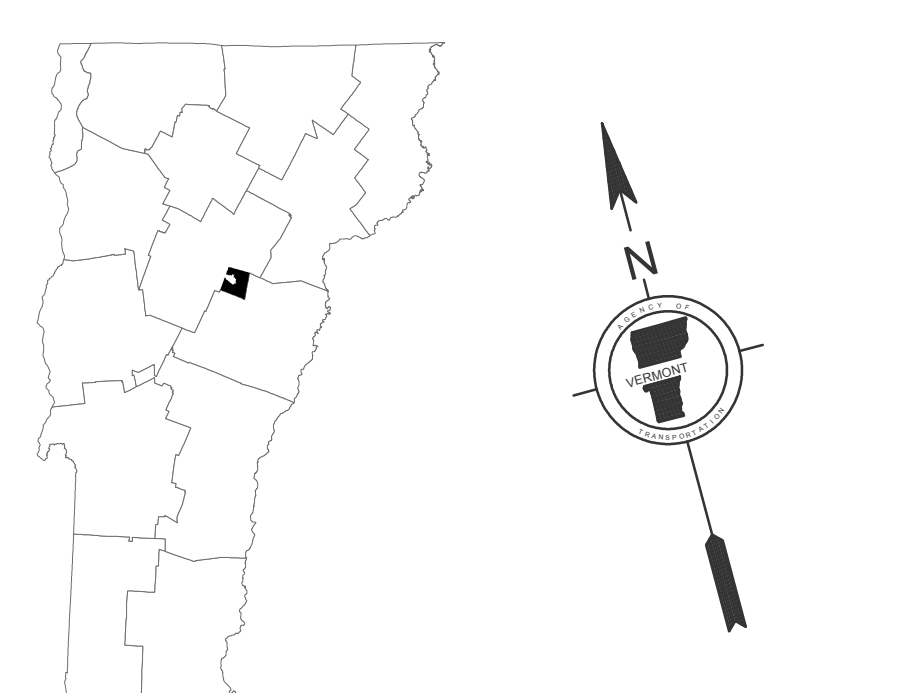
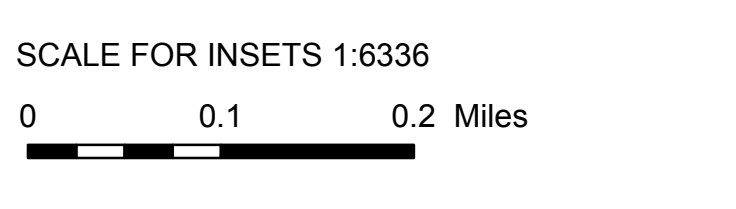
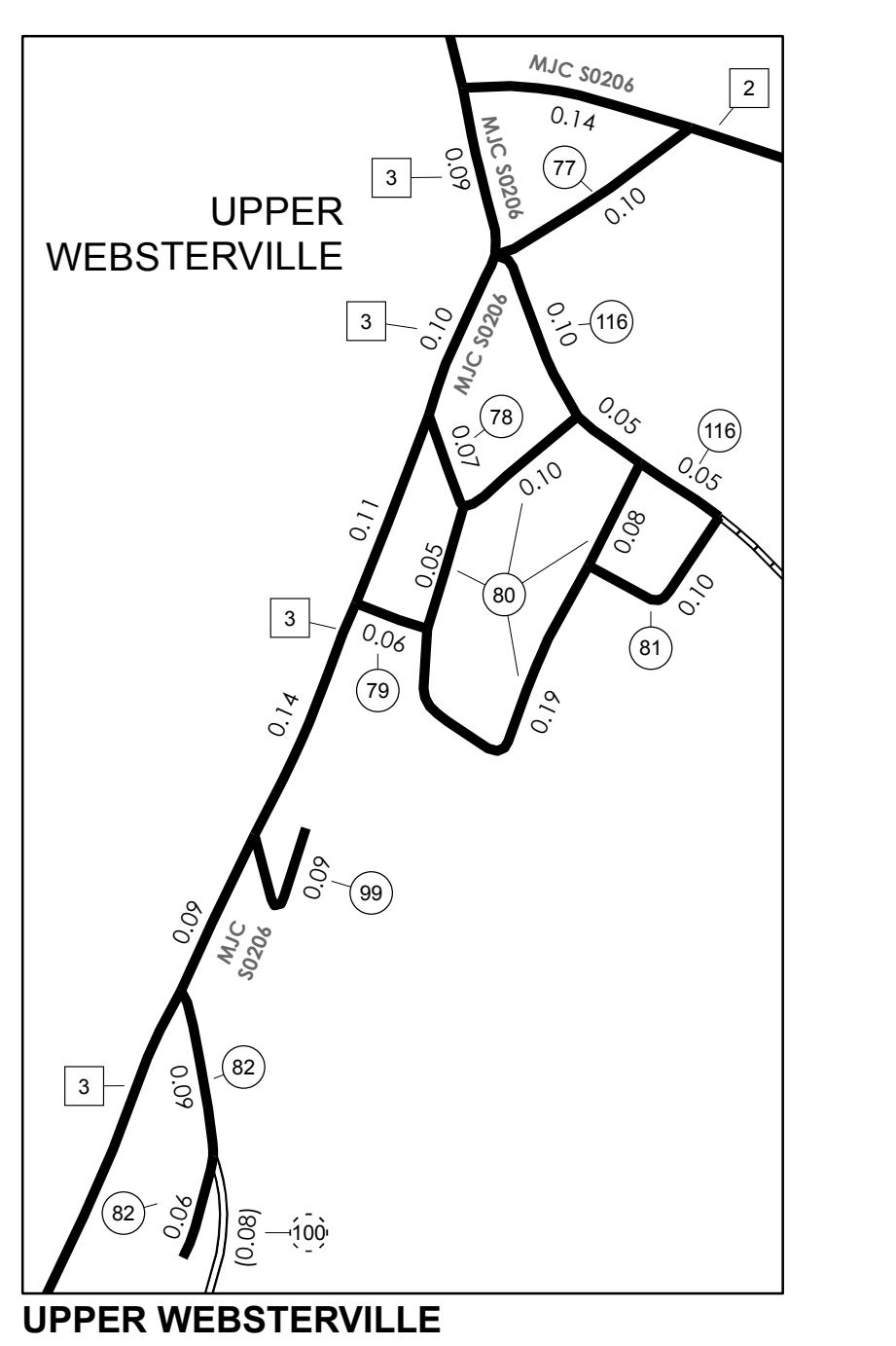
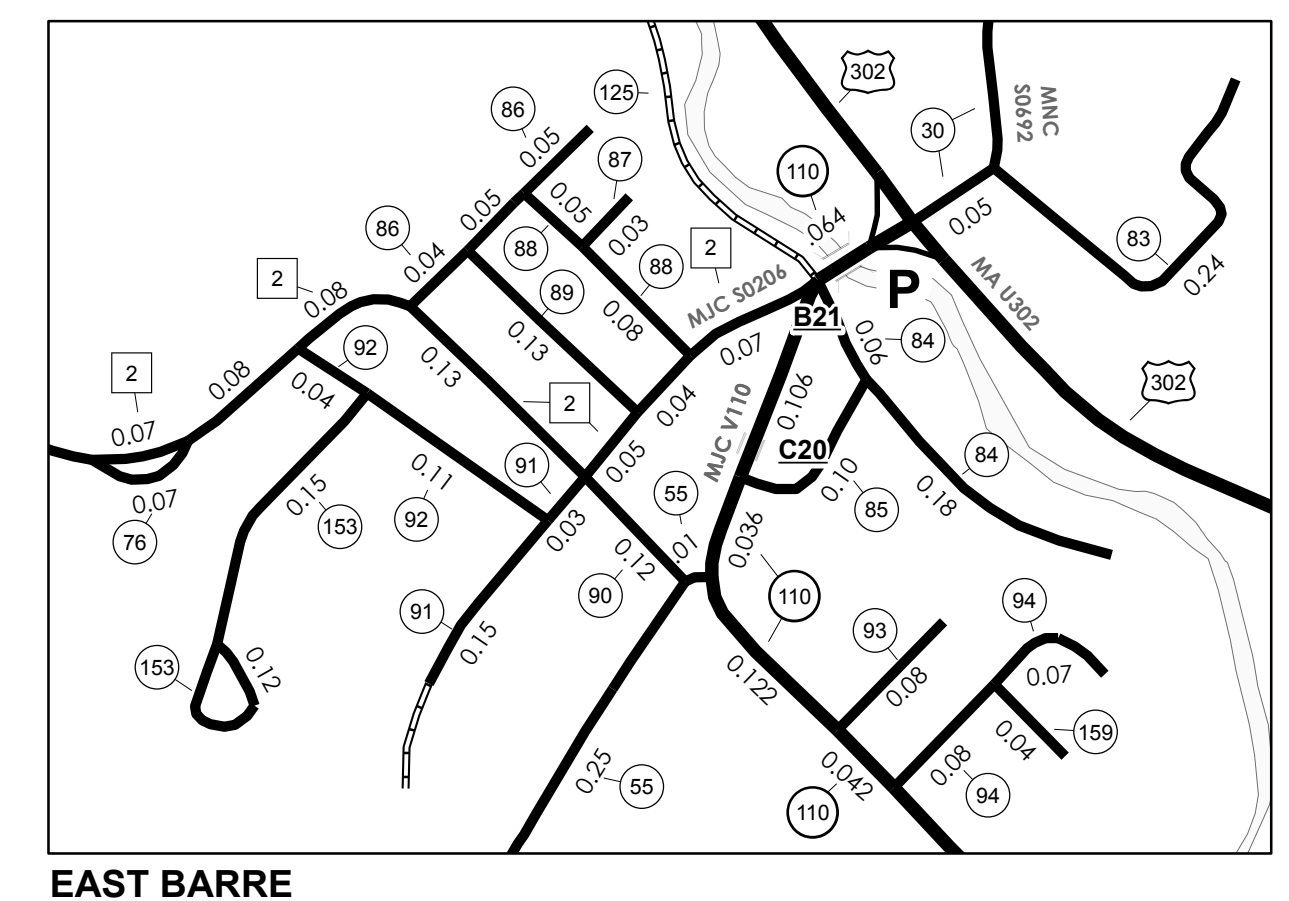
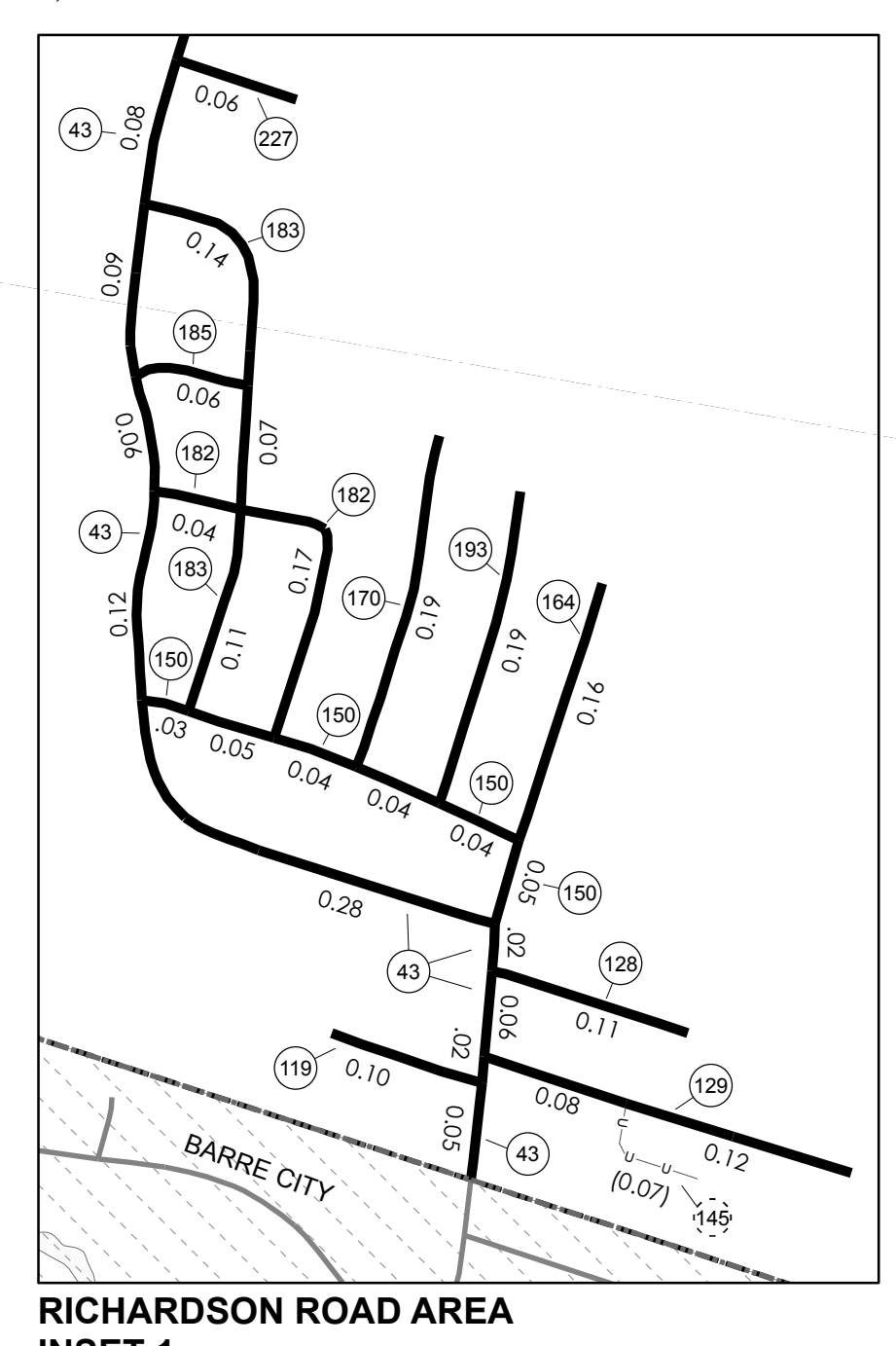
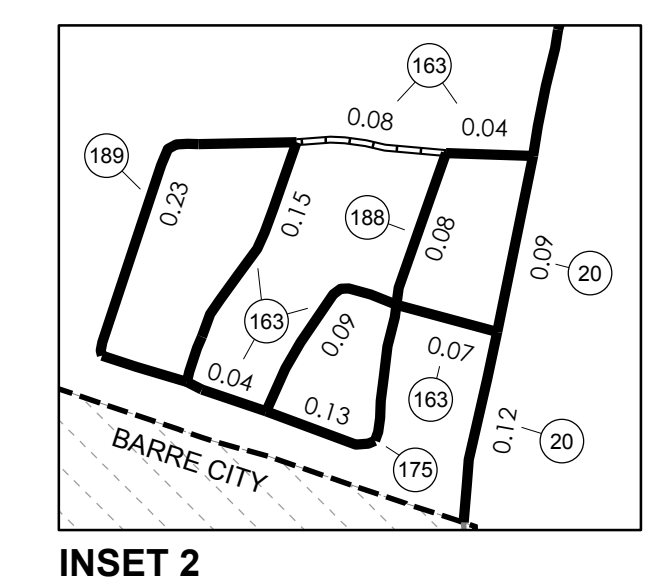
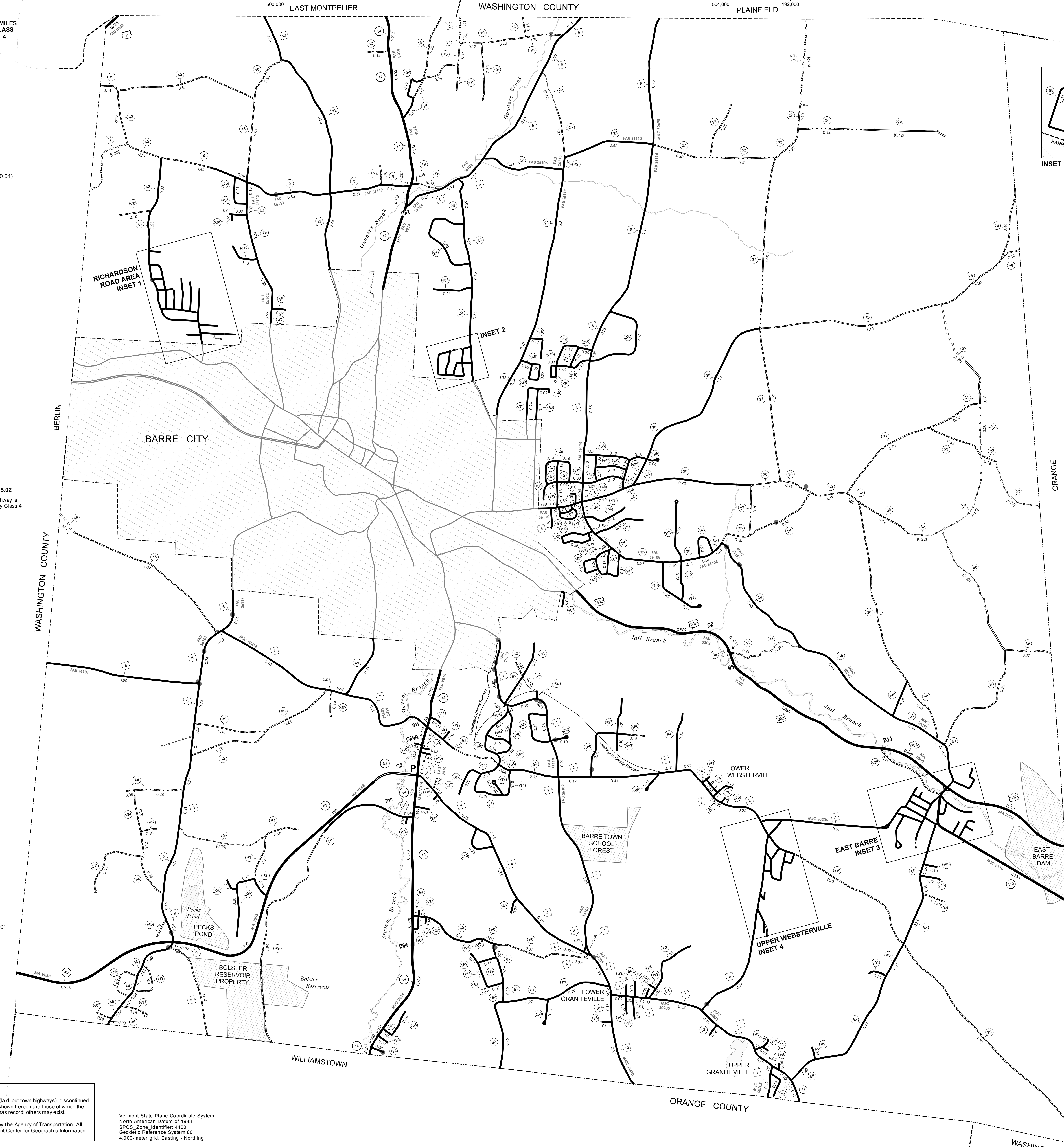
TOTAL, TRAVELED HIGHWAYS, FEB. 10, 2010: 106.352
 (Excludes Class 4 and Legal Trail Mileage)

- HIGHWAYS
 - INTERSTATE
 - U.S. ROUTE
 - STATE ROUTE
 - CLASS 1
 - CLASS 2
 - CLASS 3
 - CLASS 4
 - LEGAL TRAIL
 - INTERSTATE OR DIVIDED HIGHWAY
 - STATE - HARD SURFACE OR PAVED
 - TOWN - HARD SURFACE OR PAVED
 - GRAVEL
 - SOIL OR GRADED AND DRAINED EARTH
 - UNIMPROVED OR PRIMITIVE
 - IMPASSABLE OR UNTRAVELED
 - LEGAL TRAIL
 - DISCONTINUED
 - HIGHWAY CLASS CHANGE
 - RAILROAD
 - PARK AND RIDE
- PUBLIC LAND
- POLITICAL SUBDIVISIONS
 - STATE BOUNDARY
 - COUNTY BOUNDARY
 - TOWN BOUNDARY
 - VILLAGE BOUNDARY
 - URBAN COMPACT BOUNDARY
- WATER BODIES
 - STREAM OR BROOK
 - BRIDGE OR CULVERT
 - BRIDGE OR CULVERT GREATER THAN 20'
 - BRIDGE OR CULVERT 6' - 20'
 - TOWN SHORT STRUCTURE
 - B34 / C34 STATE BRIDGE OR CULVERT IDENTIFIER
 - B34 / C34 TOWN BRIDGE OR CULVERT IDENTIFIER
- FEDERAL CLASSIFICATION IDENTIFIER
 - FAU URBAN ARTERIAL OR COLLECTOR
 - MA MAJOR ARTERIAL
 - MJC MAJOR COLLECTOR
 - MNC MINOR COLLECTOR
 - PA PRINCIPAL ARTERIAL

STRUCTURES - SURFACE WATER NOTE:
 Town short structures (bridges or culverts from 4-feet to less than 20-feet) are drawn from the Vermont Online Bridge & Culvert Inventory Tool (VOBCIT) database.
 NOTE: Town shorts are not consistently tagged within VOBCIT.
 The surface waters are from the Vermont Hydrological Dataset (VHD). Only the named streams are shown.

DISCLAIMER:
 The untraveled highways (bid-out town highways), discontinued highways, and legal trails shown herein are those of which the Agency of Transportation has record; others may exist.
 Highway and bridge data by the Agency of Transportation. All other data from the Vermont Center for Geographic Information.

Vermont State Plane Coordinate System
 North American Datum of 1983
 SPCS Zone Identifier: 4400
 Geographic Reference System: 80
 4,000-meter grid, Easting - Northing



VERMONT
 GENERAL HIGHWAY MAP
 Town of Barre
 WASHINGTON COUNTY
 Transportation District #
 Prepared by the
 Vermont Agency of Transportation
 Division of Planning, Outreach
 and Community Affairs
 in cooperation with
 U.S. Department of Transportation
 Federal Highway Administration
 Mileage as of February 10, 2010
 Map prepared June 9, 2010
 SCALE 1:12,672

