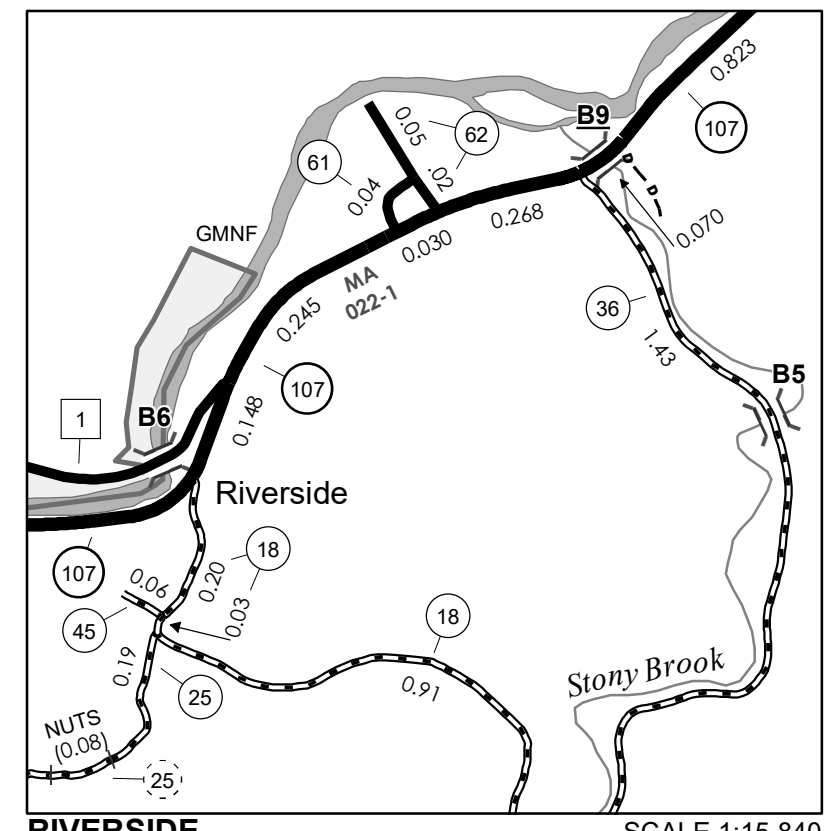
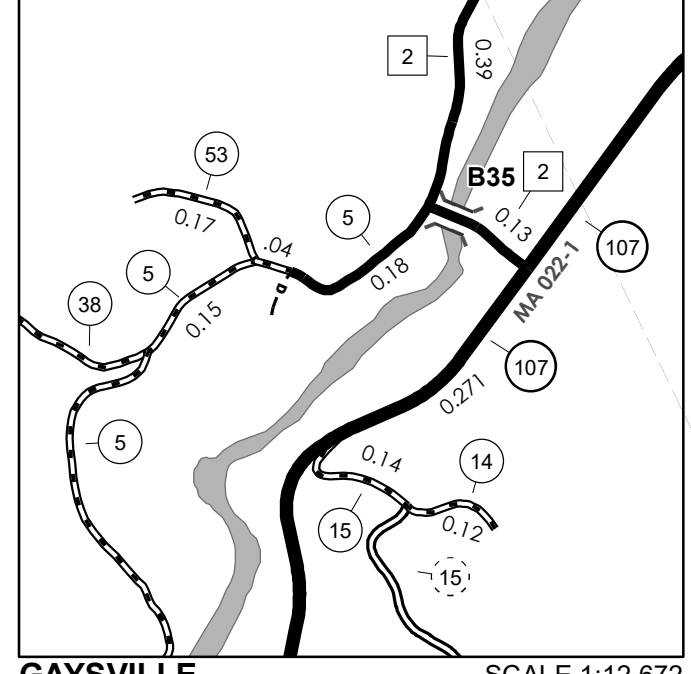


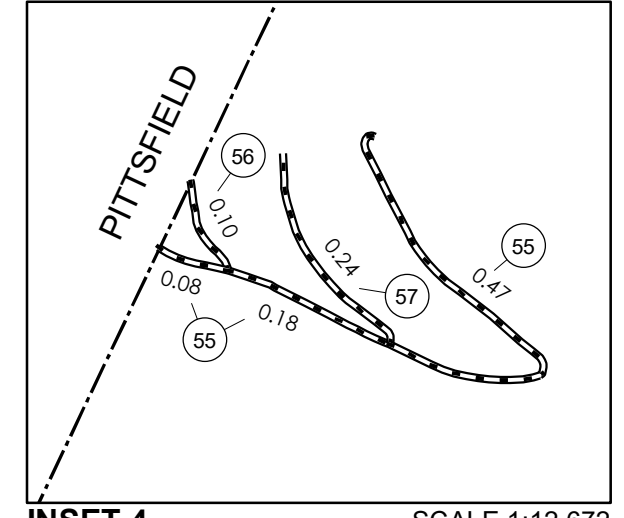
INSET 1 SCALE 1:12,672



RIVERSIDE INSET 2 SCALE 1:15,840



GAYSVILLE INSET 3 SCALE 1:12,672



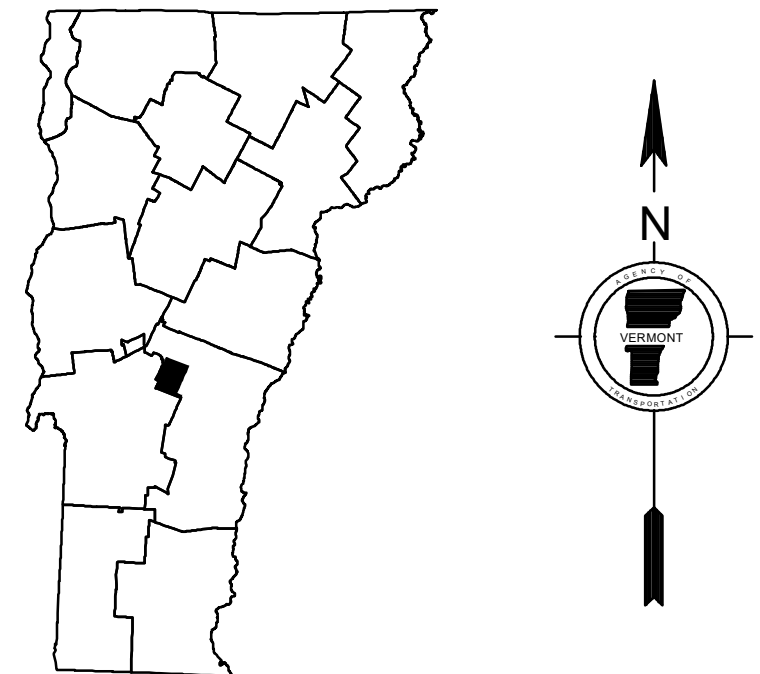
PITTSFIELD INSET 4 SCALE 1:12,672

TOWN HWY. No.	LENGTH IN MILES "NOT UP TO STANDARD"	TOWN HWY. No.	LENGTH IN MILES CLASS 3	LENGTH IN MILES CLASS 4	TOWN HWY. No.	LENGTH IN MILES CLASS 3	LENGTH IN MILES CLASS 4
7	(0.05)	34		(1.97)			
25	(0.08)	35	0.92	(0.59)			
29	(0.11)	36	5.63	(0.66)			
33	(0.39)	37		(0.62)			
52	(0.50)	38	1.46	(0.54)			
TOTAL	1.13	39	0.88				
* The sections of the town highways listed above are legally Class 3, but have been deemed "Not Up To Standard" and are functionally Class 4 Town Highways							
10	2.32	40		(0.20)			
11	1.59	41	0.04	(0.60)			
12	0.60	42		(0.60)			
13	0.70	43		(0.07)			
14	0.12	44					
15	0.14	45	0.06				
16		49	0.36				
17		51	0.32				
18	1.14	53	0.17				
19	3.09	54	0.20				
20	0.60	55	0.73				
21		56	0.10				
22		57	0.24				
23		58	0.54				
24		59	0.11				
25	2.51	60	0.07				
26		61	0.04				
27	0.24	62	0.07				
28		63	0.08				
29	1.59	64		(0.69)			
30		65		(1.23)			
31	0.18	66	0.91				
32	0.59						
33	0.34	TOTAL	33.12	24.99			

MILEAGE SUMMARY

CLASS 2		
TH-1	2,620	
TH-2	2,500	
TOTAL CLASS 2	5,120	
CLASS 3	33.12	
TOTAL CLASS 3	33.12	
TOTAL TOWN	38.240	
STATE HIGHWAY		
VT-100	5,113	
VT-107	6,679	
TOTAL STATE HIGHWAY	11,792	
TOTAL STATE	11,792	

TOTAL, TRAVELED HIGHWAYS, FEB. 10, 2024: 50,032
(Excludes Class 4 and Legal Trail Mileage)



VERMONT
GENERAL HIGHWAY MAP
Town of Stockbridge

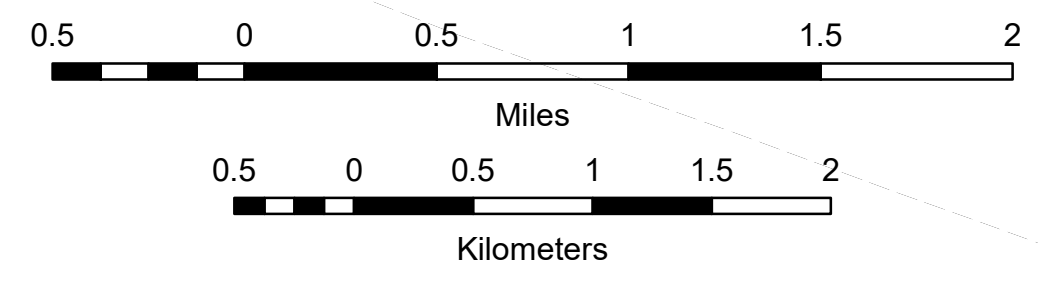
WINDSOR COUNTY

Transportation District #4

Prepared by the
Vermont Agency of Transportation
Division of Policy, Planning and Intermodal Development
in cooperation with
U.S. Department of Transportation
Federal Highway Administration

Mileage as of February 10, 2024
Map prepared August 02, 2024

SCALE 1:31,680



- HIGHWAYS**
 - INTERSTATE
 - U.S. ROUTE
 - STATE ROUTE
 - CLASS 1
 - CLASS 2
 - CLASS 3
 - CLASS 4
 - LEGAL TRAIL
 - PARK AND RIDE
 - INTERSTATE OR DIVIDED HIGHWAY
 - STATE - HARD SURFACE OR PAVED
 - TOWN - HARD SURFACE OR PAVED
 - GRAVEL
 - SOIL OR GRADED AND DRAINED EARTH
 - UNIMPROVED OR PRIMITIVE
 - IMPASSABLE OR UNTRAVELED
 - LEGAL TRAIL
 - DISCONTINUED
 - HIGHWAY CLASS CHANGE
 - RAILROAD
 - INACTIVE RAILROAD
 - PUBLIC LAND - NATIONAL FOREST
 - PUBLIC LAND - STATE/MUNICIPAL
 - NFR NATIONAL FOREST ROAD
 - ACE ARMY CORPS OF ENGINEERS
 - USGH UNITED STATES GOV. HWY.
- POLITICAL SUBDIVISIONS**
 - STATE BOUNDARY
 - COUNTY BOUNDARY
 - TOWN BOUNDARY
 - VILLAGE BOUNDARY
 - URBAN COMPACT BOUNDARY
 - WATER BODY
 - STREAM OR BROOK
 - BRIDGE OR CULVERT**
 - BRIDGE OR CULVERT > 20'
 - BRIDGE OR CULVERT 6' - 20'
 - BIKE PATH STRUCTURE
 - VTCULVERTS BRIDGE
 - VTCULVERTS CULVERT > 6'
 - STATE BRIDGE OR CULVERT IDENTIFIER**
 - TOWN BRIDGE OR CULVERT IDENTIFIER**

FEDERAL CLASSIFICATION IDENTIFIER
MA MINOR ARTERIAL
MJC MAJOR COLLECTOR
MNC MINOR COLLECTOR
PA PRINCIPAL ARTERIAL

DISCLAIMER:
The untraveled highways (laid-out town highways), discontinued highways, and legal trails herein are those of which the Agency of Transportation has record; others may exist.

Highway and bridge data by the Agency of Transportation. Town short structures drawn from the VTCULVERTS (formerly VOBCTI) online database. All other data from the Vermont Open Geodata Portal. Only named streams shown.

Vermont State Plane Coordinate System
North American Datum of 1983
SPCS_Zone_Identifier: 4400
Geodetic Reference System 80
4,000-meter grid, Easting - Northing