

TOWN HWY. NO.	LENGTH IN MILES CLASS 3	LENGTH IN MILES CLASS 4
6		(0.20)
7	3.01	
9	2.93	
10	0.19	
12	0.69	
13	0.92	
14	2.97	(1.63)
15	1.31	
16	0.08	(1.39)
17	0.30	
18	0.21	
19	1.17	
20	1.02	(0.08)
21		(0.90)
22	0.26	
24	1.07	
25	0.74	(0.22)
26	0.34	
27	0.15	
28	0.56	
29	0.13	
30	0.05	
32	0.41	
TOTAL	18.51	4.42

MILEAGE SUMMARY

CLASS 2		
TH-1	5.930	
TH-2	3.550	
TH-3	3.440	
TH-5	0.060	
TOTAL CLASS 2	12.980	
CLASS 3		
TOTAL CLASS 3	18.510	
TOTAL TOWN	31.490	
STATE HIGHWAY		
VT-133	3.216	
TOTAL STATE HIGHWAY	3.216	
TOTAL STATE	3.216	

TOTAL, TRAVELED HIGHWAYS, FEB. 10, 2010: 34.706
(Excludes Class 4 and Legal Trail Mileage)

LEGAL TRAIL LENGTH IN MILES

1	(0.30)
2	(0.74)
3	(0.18)
TOTAL	1.22

- HIGHWAYS**
- INTERSTATE
 - U.S. ROUTE
 - STATE ROUTE
 - CLASS 1
 - CLASS 2
 - CLASS 3
 - CLASS 4
 - LEGAL TRAIL
 - INTERSTATE OR DIVIDED HIGHWAY
 - STATE - HARD SURFACE OR PAVED
 - TOWN - HARD SURFACE OR PAVED
 - GRAVEL
 - SOIL OR GRADED AND DRAINED EARTH
 - UNIMPROVED OR PRIMITIVE
 - IMPASSABLE OR UNTRAVELED
 - LEGAL TRAIL
 - DISCONTINUED
 - HIGHWAY CLASS CHANGE
 - RAILROAD

- POLITICAL SUBDIVISIONS**
- STATE BOUNDARY
 - COUNTY BOUNDARY
 - TOWN BOUNDARY
 - VILLAGE BOUNDARY
 - URBAN COMPACT BOUNDARY
 - WATER BODIES
 - STREAM OR BROOK
 - BRIDGE OR CULVERT
 - BRIDGE OR CULVERT GREATER THAN 20'
 - BRIDGE OR CULVERT 6' - 20'
 - TOWN SHORT STRUCTURE

B34 / C34 STATE BRIDGE OR CULVERT IDENTIFIER
B34 / C34 TOWN BRIDGE OR CULVERT IDENTIFIER

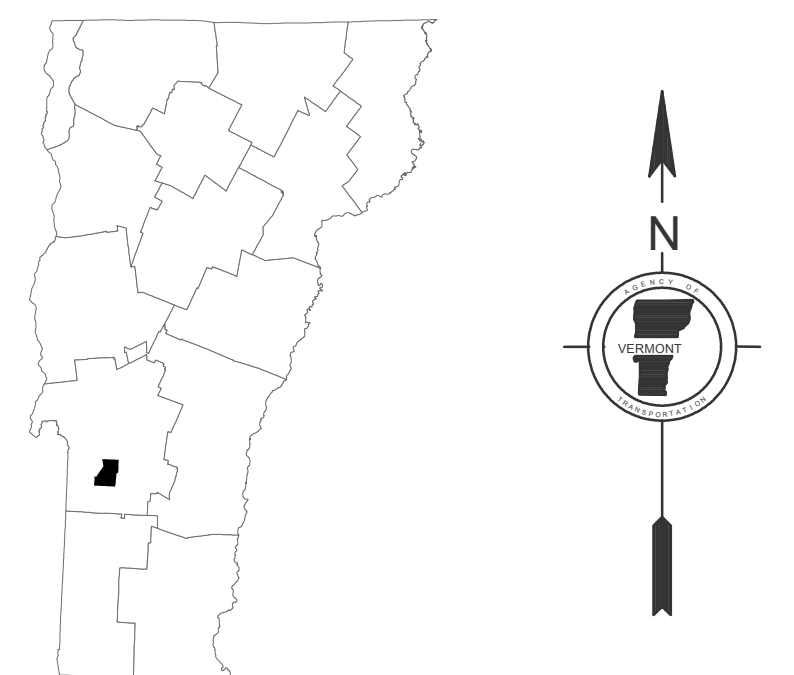
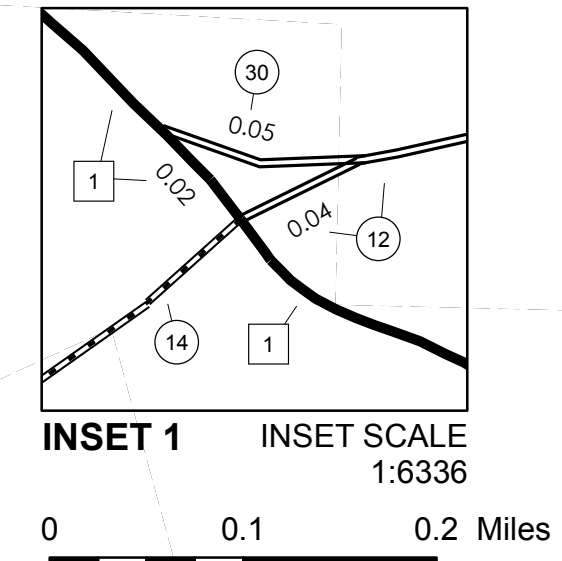
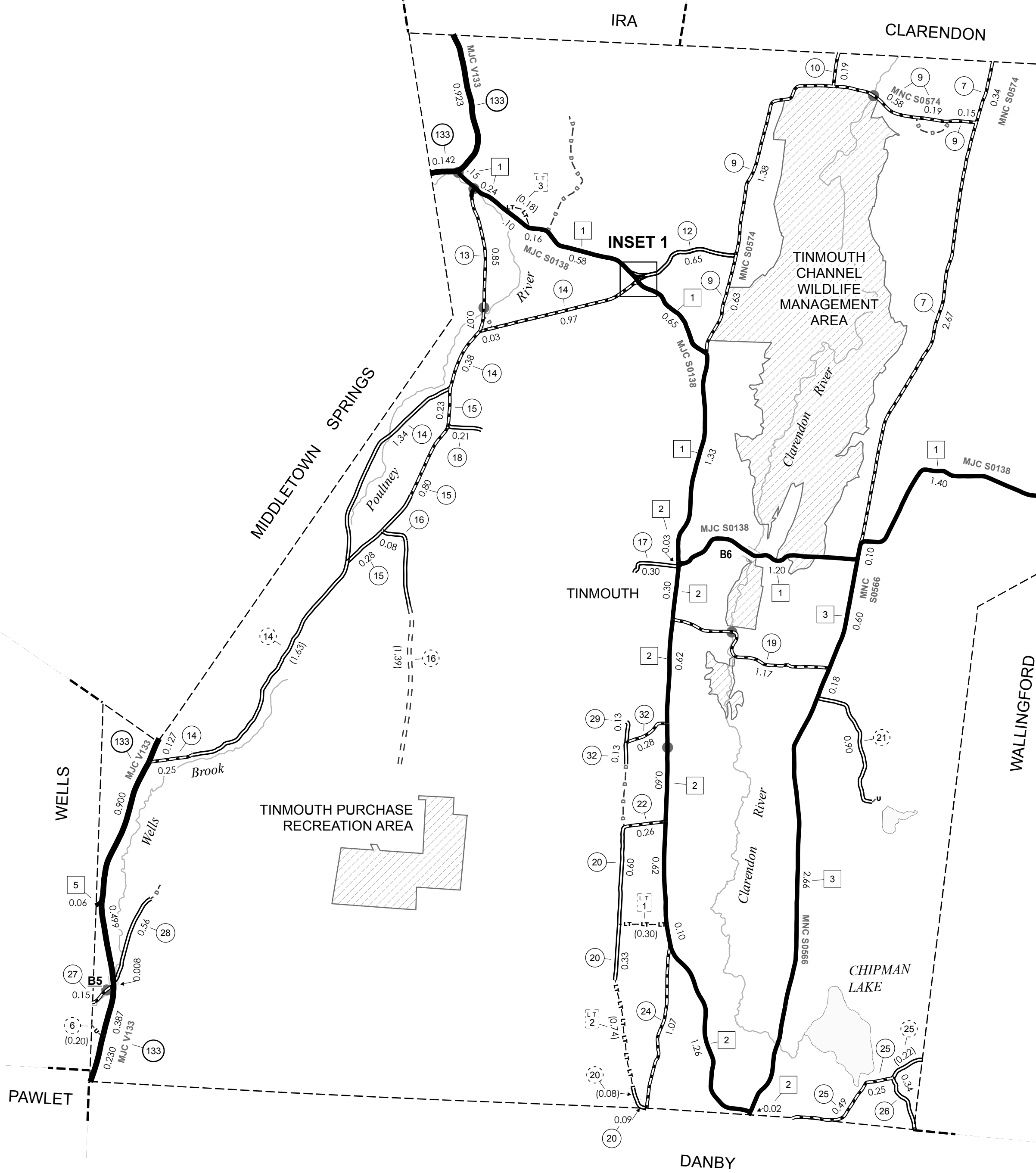
FEDERAL CLASSIFICATION IDENTIFIER
FAU URBAN ARTERIAL OR COLLECTOR
MA MINOR ARTERIAL
MJC MAJOR COLLECTOR
MNC MINOR COLLECTOR
PA PRINCIPAL ARTERIAL

STRUCTURES - SURFACE WATER NOTE:
STRUCTURES: Town short structures (bridges or culverts from 6-feet to less than 20-feet) are drawn from the Vermont Online Bridge & Culvert Inventory Tool (VOBCIT) database.
NOTE: Town shorts are not consistently tagged within VOBCIT.

SURFACE WATERS:
The surface waters are from the Vermont Hydrological Dataset (VHD). Only the named streams are shown.

DISCLAIMER:
The untraveled highways (laid-out town highways), discontinued highways, and legal trails shown hereon are those of which the Agency of Transportation has record; others may exist.

Highway and bridge data by the Agency of Transportation. All other data from the Vermont Center for Geographic Information.



**VERMONT
GENERAL HIGHWAY MAP
Town of Tinmouth**

RUTLAND COUNTY

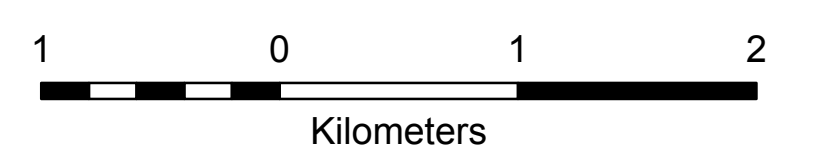
Transportation District #3

Prepared by the
Vermont Agency of Transportation
Division of Planning, Outreach
and Community Affairs
in cooperation with

U.S. Department of Transportation
Federal Highway Administration

Mileage as of February 10, 2010
Map prepared June 30, 2010

SCALE 1:31,680



Vermont State Plane Coordinate System
North American Datum of 1983
SPCS_Zone Identifier: 4400
Geodetic Reference System: 80
4,000-meter grid, Easting - Northing