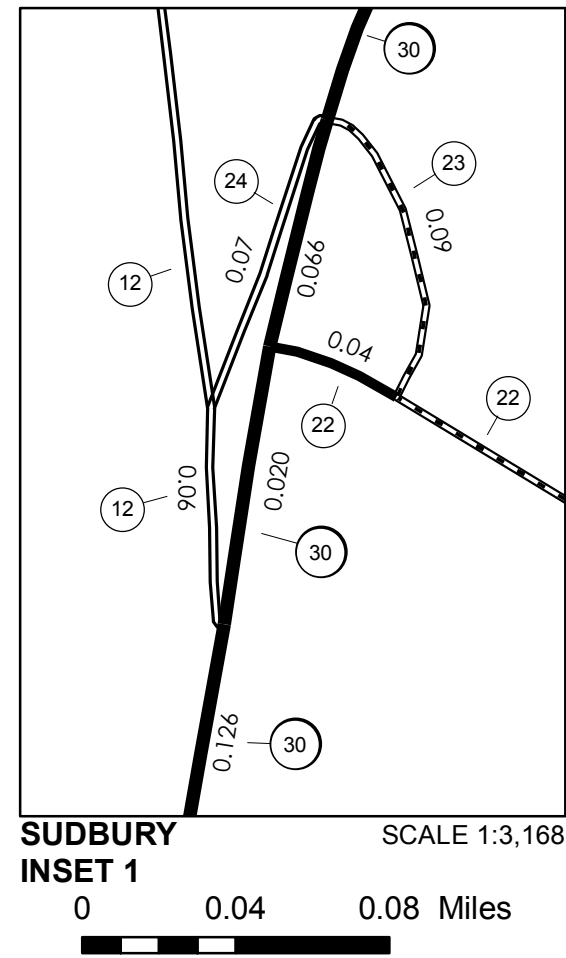


TOWN HWY. No.	LENGTH IN MILES CLASS 3	CLASS 4
5	2.65	
6	0.80	
7	0.75	
8	1.36	
9	0.08	(0.07)
10	0.55	
11	0.38	
12	0.70	
13	1.80	(1.05)
14		(0.60)
15	0.25	
17	0.19	(0.88)
18	0.65	
19	0.75	
20	0.46	
21	0.37	
22	2.30	
23	0.09	
24	0.07	
<b>TOTAL</b>	<b>14.20</b>	<b>2.60</b>

**MILEAGE SUMMARY**

CLASS	LENGTH	TOTAL
CLASS 2		
TH-1	4.280	
TH-2	1.750	
TH-3	0.400	
TH-4	1.300	
<b>TOTAL CLASS 2</b>		<b>7.730</b>
CLASS 3		
<b>TOTAL CLASS 3</b>		<b>14.20</b>
<b>TOTAL TOWN</b>		<b>21.930</b>
STATE HIGHWAY		
VT-30	6.393	
VT-73	3.194	
<b>TOTAL STATE HIGHWAY</b>		<b>9.587</b>
<b>TOTAL STATE</b>		<b>9.587</b>

**TOTAL, TRAVELED HIGHWAYS, FEB. 10, 2014: 31.517**  
 (Excludes Class 4, Legal Trail, and Unidentified Corridor Mileage)



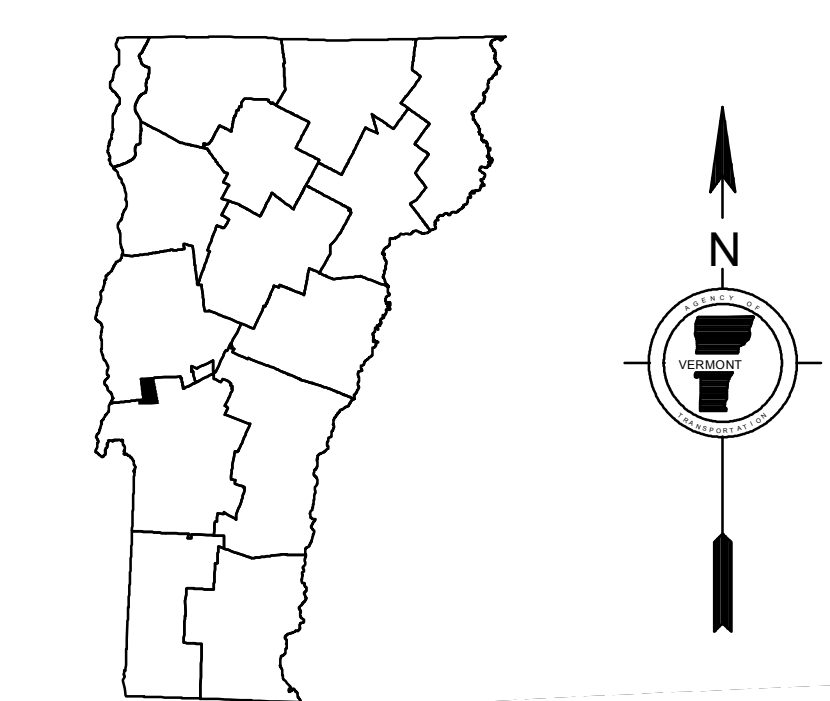
SUDBURY INSET 1 SCALE 1:31,680  
 0 0.04 0.08 Miles

- HIGHWAYS**
- INTERSTATE
  - U.S. ROUTE
  - STATE ROUTE
  - CLASS 1
  - CLASS 2
  - CLASS 3
  - CLASS 4
  - LEGAL TRAIL
- INTERSTATE OR DIVIDED HIGHWAY  
 STATE - HARD SURFACE OR PAVED  
 TOWN - HARD SURFACE OR PAVED  
 GRAVEL  
 SOIL OR GRADED AND DRAINED EARTH  
 UNIMPROVED OR PRIMITIVE  
 IMPASSABLE OR UNTRAVELED  
 LEGAL TRAIL  
 DISCONTINUED  
 HIGHWAY CLASS CHANGE  
 RAILROAD  
 INACTIVE RAILROAD  
 NATIONAL FOREST ROAD  
 STATE FOREST HIGHWAY  
 PARK AND RIDE
- POLITICAL SUBDIVISIONS**
- STATE BOUNDARY
  - COUNTY BOUNDARY
  - TOWN BOUNDARY
  - VILLAGE BOUNDARY
  - URBAN COMPACT BOUNDARY
  - WATER BODY
  - STREAM OR BROOK
- BRIDGE OR CULVERT**
- BRIDGE OR CULVERT > 20'
  - BRIDGE OR CULVERT 6' - 20'
  - VOBCIT BRIDGE
  - VOBCIT CULVERT > 6'
  - STATE BRIDGE OR CULVERT IDENTIFIER
  - TOWN BRIDGE OR CULVERT IDENTIFIER
- PUBLIC LAND - GREEN MOUNTAIN NATIONAL FOREST**
- PUBLIC LAND - STATE/MUNICIPAL
- FEDERAL CLASSIFICATION IDENTIFIER**
- FAU URBAN ARTERIAL OR COLLECTOR
  - MA MINOR ARTERIAL
  - MJC MAJOR COLLECTOR
  - MNC MINOR COLLECTOR
  - PA PRINCIPAL ARTERIAL

**DISCLAIMER:**  
 The untraveled highways (laid-out town highways), discontinued highways, and legal trails herein are those of which the Agency of Transportation has record; others may exist.

Highway and bridge data by the Agency of Transportation. Town short structures are drawn from the Vermont Online Bridge & Culvert Inventory Tool (VOBCIT) database. All other data from the Vermont Center for Geographic Information. Only named streams are shown.

Vermont State Plane Coordinate System  
 North American Datum of 1983  
 SPCS\_Zone\_Identifier: 4400  
 Geodetic Reference System 80  
 4,000-meter grid, Easting - Northing



**VERMONT**  
**GENERAL HIGHWAY MAP**  
**Town of Sudbury**

RUTLAND COUNTY

Transportation District #3

Prepared by the  
 Vermont Agency of Transportation  
 Division of Policy, Planning and Intermodal Development  
 in cooperation with

U.S. Department of Transportation  
 Federal Highway Administration

Mileage as of February 10, 2014  
 Map prepared October 03, 2014

SCALE 1:31,680

