

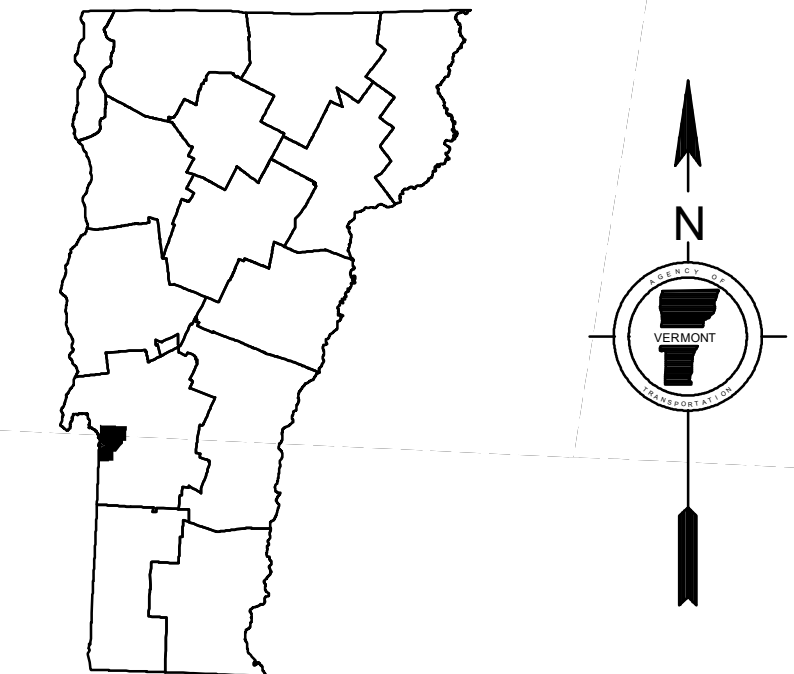
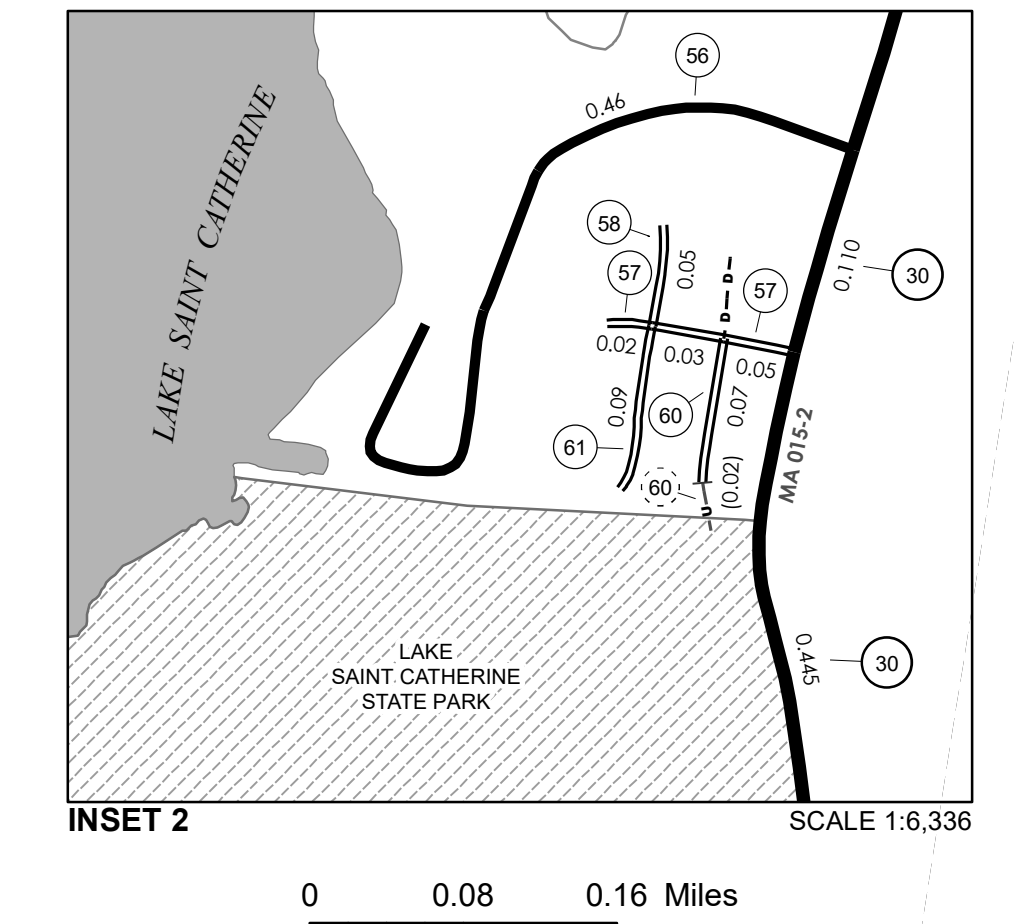
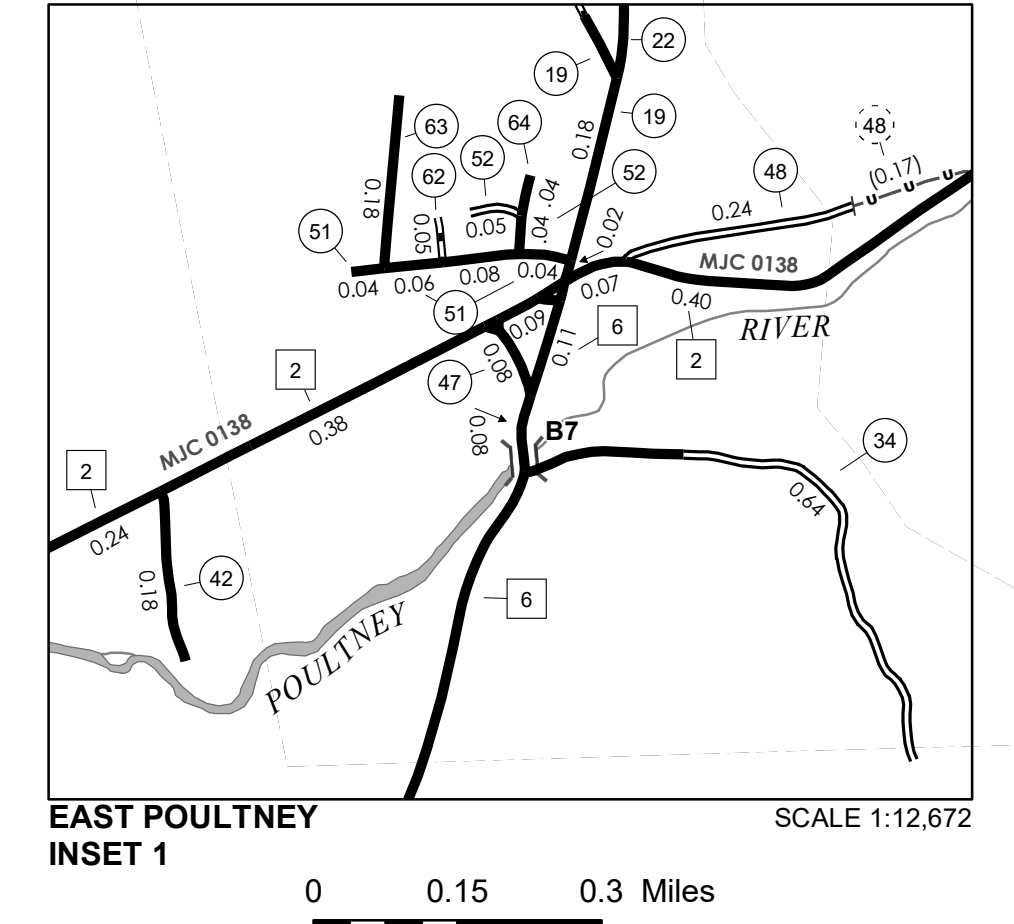
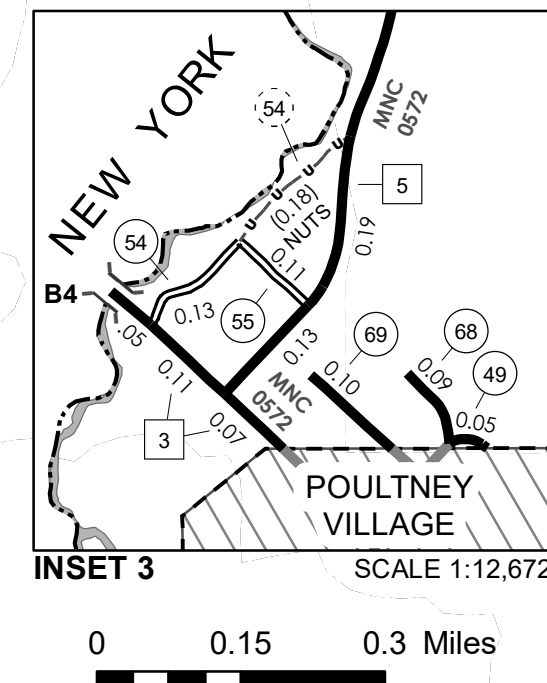
TOWN HWY. No.	LENGTH IN MILES CLASS 3	LENGTH IN MILES CLASS 4	TOWN HWY. No.	LENGTH IN MILES CLASS 3	LENGTH IN MILES CLASS 4
8	0.33		38	0.25	
9	6.18		39	1.40	
10	1.48		40	0.32	
11	1.88		41		(0.40)
12	0.24		42	0.18	
14	0.22	(0.06)	43	1.39	
15	0.50		44	0.57	
16	0.65		45		(0.20)
17		(0.15)	46	0.68	
18	0.65		47	0.08	
19	4.57		48	0.24	
20	3.50		49	0.05	
21	1.00		51	0.22	
22	1.88		52	0.09	
23	0.38	(0.07)	53	0.83	
24		(1.04)	54	0.13	
25	2.31		55	0.11	
26	0.09		56	0.46	
27	0.28		57	0.10	
28		(0.50)	58	0.05	
29	(0.29)		60	0.07	(0.02)
30	1.12	(0.33)	61	0.09	
31	2.81		62	0.05	
32	0.91	(0.23)	63	0.18	
33	0.39		64	0.04	
34	0.64		65	0.23	
35	0.52	(0.33)	67	0.16	
36	0.11		68	0.09	
37	0.78		69	0.10	
TOTAL			41.58		3.79

TOWN HWY. No.	LENGTH IN MILES "NOT UP TO STANDARD"	LEGAL TRAIL No.	LENGTH IN MILES LEGAL TRAIL
11	(0.31)	1	(1.49)
14	(0.12)		
29	(2.47)		
31	(0.28)		
44	(0.32)		
54	(0.18)		
TOTAL	3.68		

* The sections of the town highways listed above are legally Class 3, but have been deemed "Not Up To Standard" and are functionally Class 4 Town Highways

MILEAGE SUMMARY		
CLASS 1		
TH-1	0.404	
TOTAL CLASS 1		0.404
CLASS 2		
TH-2	4.520	
TH-3	0.230	
TH-4	0.260	
TH-5	3.160	
TH-6	1.570	
TH-7	0.910	
TH-8	1.750	
TOTAL CLASS 2		12.400
CLASS 3		
TOTAL CLASS 3		41.58
TOTAL TOWN		54.384
STATE HIGHWAY		
VT-30	8.899	
VT-31	3.201	
TOTAL STATE HIGHWAY		12.100
TOTAL STATE		12.100

TOTAL, TRAVELED HIGHWAYS, FEB. 10, 2021: 66.484
(Excludes Class 4 and Legal Trail Mileage)



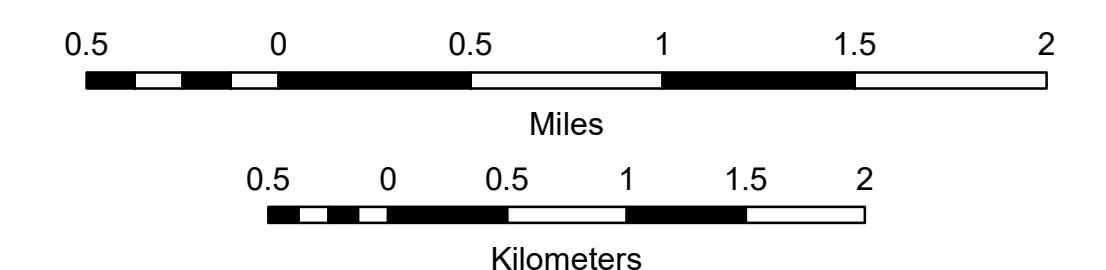
VERMONT GENERAL HIGHWAY MAP

Town of Poultney

RUTLAND COUNTY
Transportation District #3

Prepared by the
Vermont Agency of Transportation
Division of Policy, Planning and Intermodal Development
in cooperation with
U.S. Department of Transportation
Federal Highway Administration

Mileage as of February 10, 2021
Map prepared July 01, 2021
SCALE 1:31,680



DISCLAIMER:
The untraveled highways (laid-out town highways), discontinued highways, and legal trails herein are those of which the Agency of Transportation has record; others may exist.

Highway and bridge data by the Agency of Transportation. Town short structures drawn from the VT/CULVERTS (formerly VOBCIT) online database. All other data from the Vermont Open Geodata Portal. Only named streams shown.

Vermont State Plane Coordinate System
North American Datum of 1983
SPCS_Zone_Identifier: 4400
Geodetic Reference System 80
4,000-meter grid, Easting - Northing