

TOWN HWY. No.	LENGTH IN MILES CLASS 3	LENGTH IN MILES CLASS 4	TOWN HWY. No.	LENGTH IN MILES CLASS 3	LENGTH IN MILES CLASS 4
8	0.33		39	1.40	
9	6.18		40	0.32	
10	1.48		41		(0.40)
11	1.88		42	0.18	
12	0.24		43	1.39	
14	0.22	(0.06)	44	0.57	
15	0.50		45		(0.20)
16	0.65		46	0.68	
17		(0.15)	47	0.08	
18	0.65		48	0.24	(0.17)
19	4.57		49	0.05	
20	3.50		50		(0.45)
21	1.00		51	0.22	
22	1.88		52	0.09	
23	0.38	(0.07)	53	0.83	
24		(1.04)	54	0.13	
25	2.31		55	0.11	
26	0.09		56	0.46	
27	0.28		57	0.10	
28		(0.50)	58	0.05	
29		(1.76)	59	0.04	
30	1.12	(0.33)	60	0.07	(0.02)
31	2.81		61	0.09	
32	0.91	(0.23)	62	0.05	
33	0.39		63	0.18	
34	0.64		64	0.04	
35	0.52	(0.33)	65	0.23	
36	0.11		67	0.16	
37	0.78		68	0.09	
38	0.25		69	0.10	
<b>TOTAL</b>			<b>41.62</b>	<b>5.71</b>	

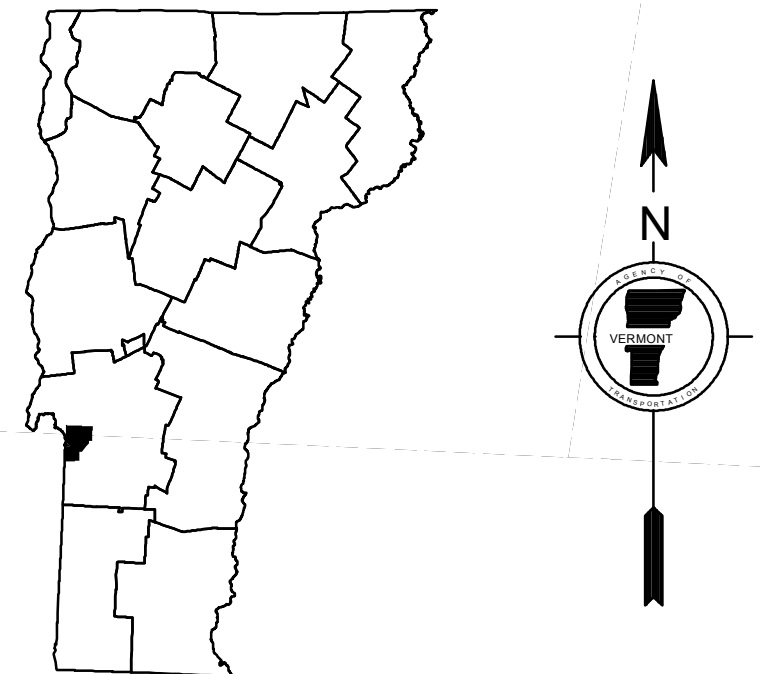
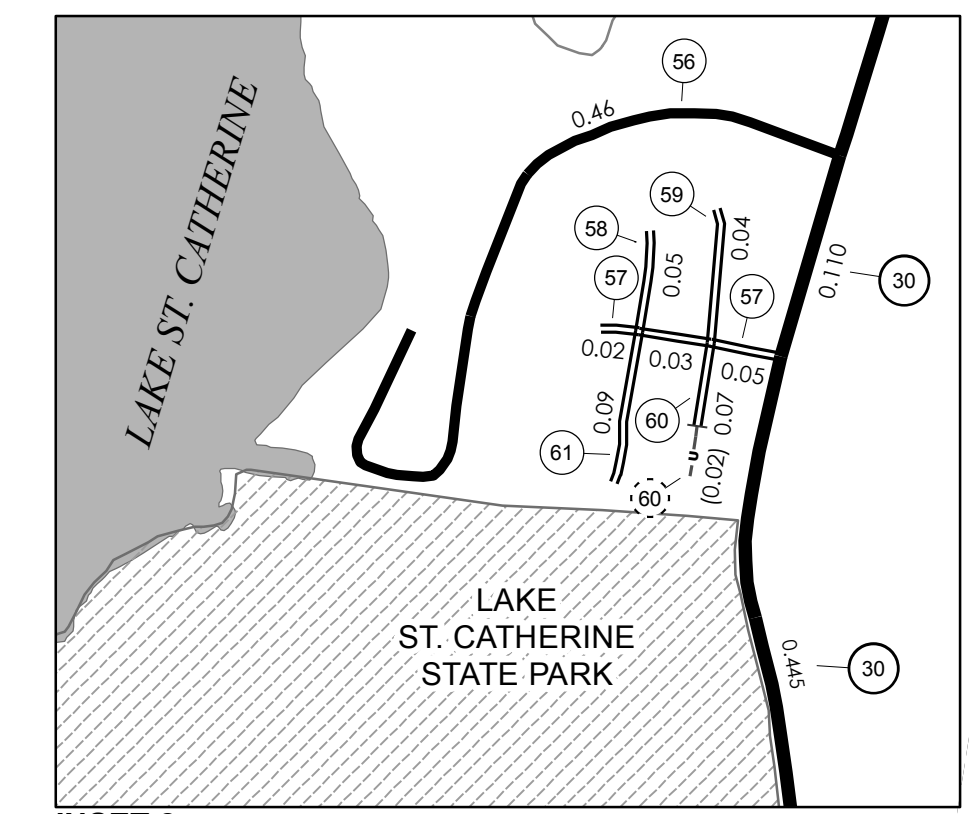
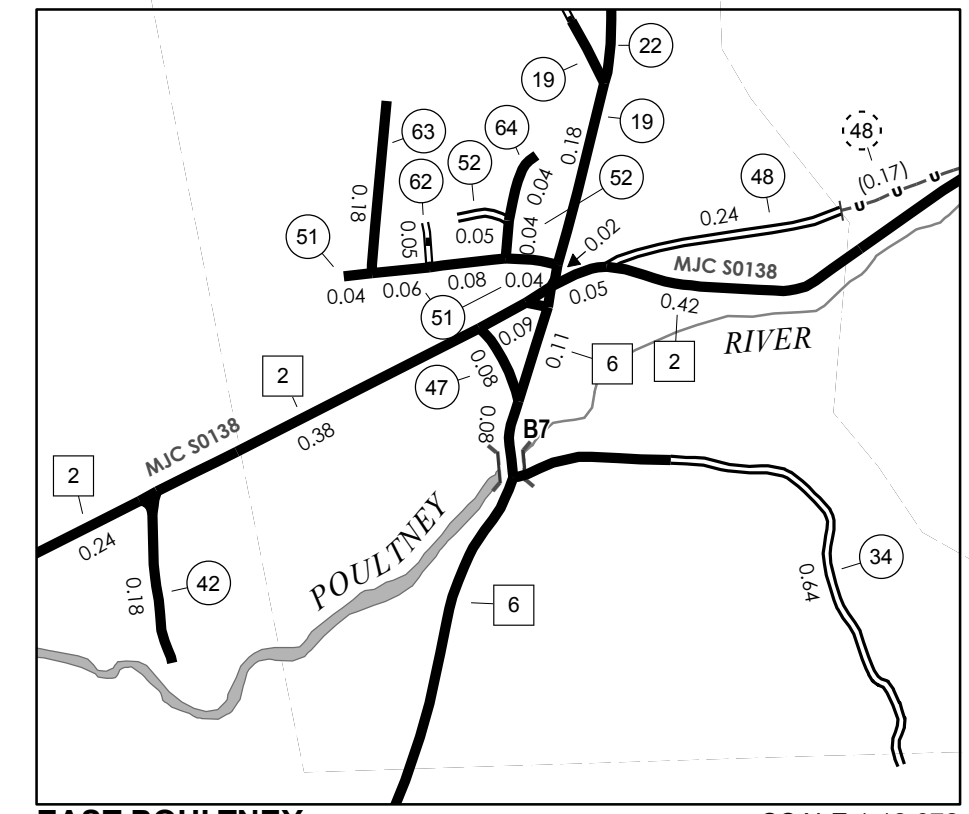
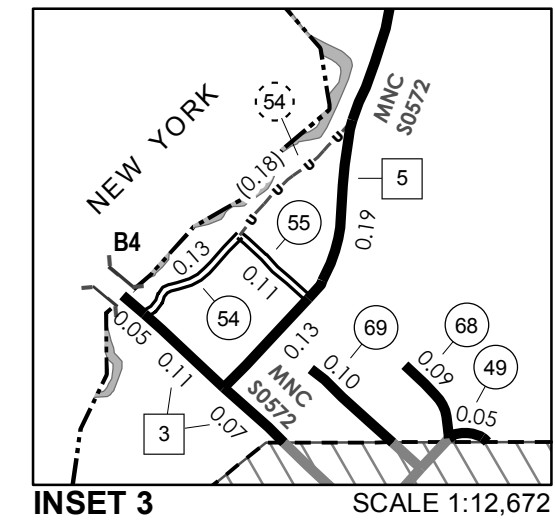
TOWN HWY. No.	LENGTH IN MILES "NOT UP TO STANDARD"
11	(0.31)
14	(0.12)
29	(2.49)
31	(0.28)
44	(0.32)
54	(0.18)
<b>TOTAL</b>	<b>3.70</b>

\* The sections of the town highways listed above are legally Class 3, but have been deemed "Not Up To Standard" and are functionally Class 4 Town Highways

**MILEAGE SUMMARY**

CLASS 1		
TH-1	0.404	
<b>TOTAL CLASS 1</b>		<b>0.404</b>
CLASS 2		
TH-2	4.520	
TH-3	0.230	
TH-4	0.260	
TH-5	3.160	
TH-6	1.570	
TH-7	0.910	
TH-8	1.750	
<b>TOTAL CLASS 2</b>		<b>12.400</b>
CLASS 3		
<b>TOTAL CLASS 3</b>		<b>41.62</b>
<b>TOTAL TOWN</b>		<b>54.424</b>
STATE HIGHWAY		
VT-30	8.899	
VT-31	3.201	
<b>TOTAL STATE HIGHWAY</b>		<b>12.100</b>
<b>TOTAL STATE</b>		<b>12.100</b>

**TOTAL, TRAVELED HIGHWAYS, FEB. 10, 2013: 66.524**  
(Excludes Class 4, Legal Trail, and Unidentified Corridor Mileage)



**VERMONT GENERAL HIGHWAY MAP**  
**Town of Poultney**

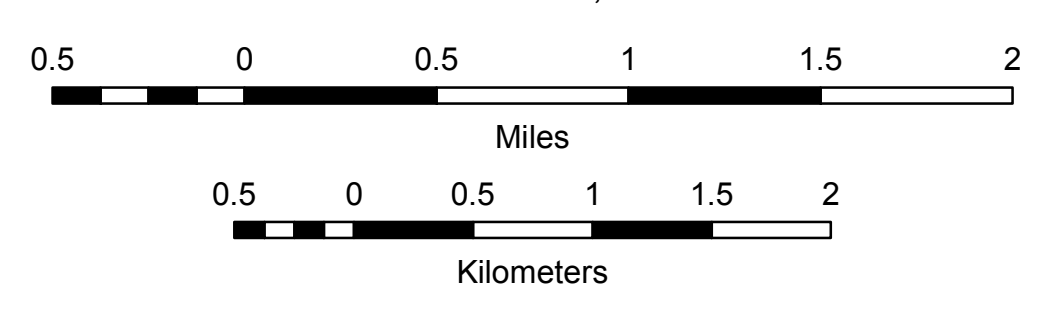
RUTLAND COUNTY

Transportation District #3

Prepared by the  
Vermont Agency of Transportation  
Division of Policy, Planning and Intermodal Development  
in cooperation with  
U.S. Department of Transportation  
Federal Highway Administration

Mileage as of February 10, 2013  
Map prepared October 15, 2013

SCALE 1:31,680



**DISCLAIMER:**  
The untraveled highways (laid-out town highways), discontinued highways, and legal trails hereon are those of which the Agency of Transportation has record; others may exist.  
Highway and bridge data by the Agency of Transportation. All other data from the Vermont Center for Geographic Information. Only named streams are shown.

Vermont State Plane Coordinate System  
North American Datum of 1983  
SPCS\_Zone\_Identifier: 4400  
Geodetic Reference System 80  
4,000-meter grid, Easting - Northing