

TOWN HWY. NO.	LENGTH IN MILES			
	CLASS 3	CLASS 4		
8	0.33		38	0.25
9	6.18		39	1.40
10	1.48		40	0.32
11	1.88		41	(0.40)
11		(0.31)	42	0.18
12	0.24		43	1.39
14	0.22	(0.06)	44	0.57
14		(0.12)	44	(0.32)
15	0.50		45	(0.20)
16	0.65		46	0.68
17		(0.15)	47	0.08
18	0.65		48	0.24
19	4.57		49	0.05
20	3.50		50	(0.45)
21	1.00		51	0.22
22	1.88		52	0.09
23	0.38	(0.07)	53	0.83
24		(1.04)	54	0.13
25	2.31		54	(0.18)
26	0.09		55	0.11
27	0.28		56	0.46
28		(0.50)	57	0.10
29		(1.76)	58	0.05
29		(2.49)	59	0.04
30	1.12	(0.33)	60	0.07
31	2.81		61	0.09
31		(0.28)	62	0.05
32	0.91	(0.23)	63	0.18
33	0.39		64	0.04
34	0.64		65	0.23
35	0.52	(0.33)	67	0.16
36	0.11		68	0.09
37	0.78		69	0.10
TOTAL	41.62		9.41	

* This portion of town highway is Class 3, but is functionally Class 4

MILEAGE SUMMARY

CLASS 1			
TH-1	0.404		
TOTAL CLASS 1	0.404		
CLASS 2			
TH-2	4.520		
TH-3	0.230		
TH-4	0.260		
TH-5	3.160		
TH-6	1.570		
TH-7	0.910		
TH-8	1.750		
TOTAL CLASS 2	12.400		
CLASS 3			
TOTAL CLASS 3	41.620		
TOTAL TOWN	54.424		
STATE HIGHWAY			
VT-30	8.899		
VT-31	3.201		
TOTAL STATE HIGHWAY	12.100		
TOTAL STATE	12.100		

TOTAL, TRAVELED HIGHWAYS, FEB. 10, 2011: 66.524
(Excludes Class 4, Legal Trail, and Unidentified Corridor Mileage)

HIGHWAYS

- INTERSTATE
- U.S. ROUTE
- STATE ROUTE
- CLASS 1
- CLASS 2
- CLASS 3
- CLASS 4
- LEGAL TRAIL
- INTERSTATE OR DIVIDED HIGHWAY
- STATE - HARD SURFACE OR PAVED
- TOWN - HARD SURFACE OR PAVED
- GRAVEL
- SOIL OR GRADED AND DRAINED EARTH
- UNIMPROVED OR PRIMITIVE
- IMPASSABLE OR UNTRAVELED
- LEGAL TRAIL
- DISCONTINUED
- HIGHWAY CLASS CHANGE
- RAILROAD
- INACTIVE RAILROAD

POLITICAL SUBDIVISIONS

- STATE BOUNDARY
- COUNTY BOUNDARY
- TOWN BOUNDARY
- VILLAGE BOUNDARY
- URBAN COMPACT BOUNDARY
- WATER BODY
- STREAM OR BROOK
- BRIDGE OR CULVERT
- BRIDGE OR CULVERT GREATER THAN 20'
- BRIDGE OR CULVERT 6' - 20'
- TOWN SHORT STRUCTURE

B34 / C34 STATE BRIDGE OR CULVERT IDENTIFIER
B34 / C34 TOWN BRIDGE OR CULVERT IDENTIFIER

FEDERAL CLASSIFICATION IDENTIFIER
FAU URBAN ARTERIAL OR COLLECTOR
MA MINOR ARTERIAL
MJC MAJOR COLLECTOR
MNC MINOR COLLECTOR
PA PRINCIPAL ARTERIAL

STRUCTURES - SURFACE WATER NOTE:

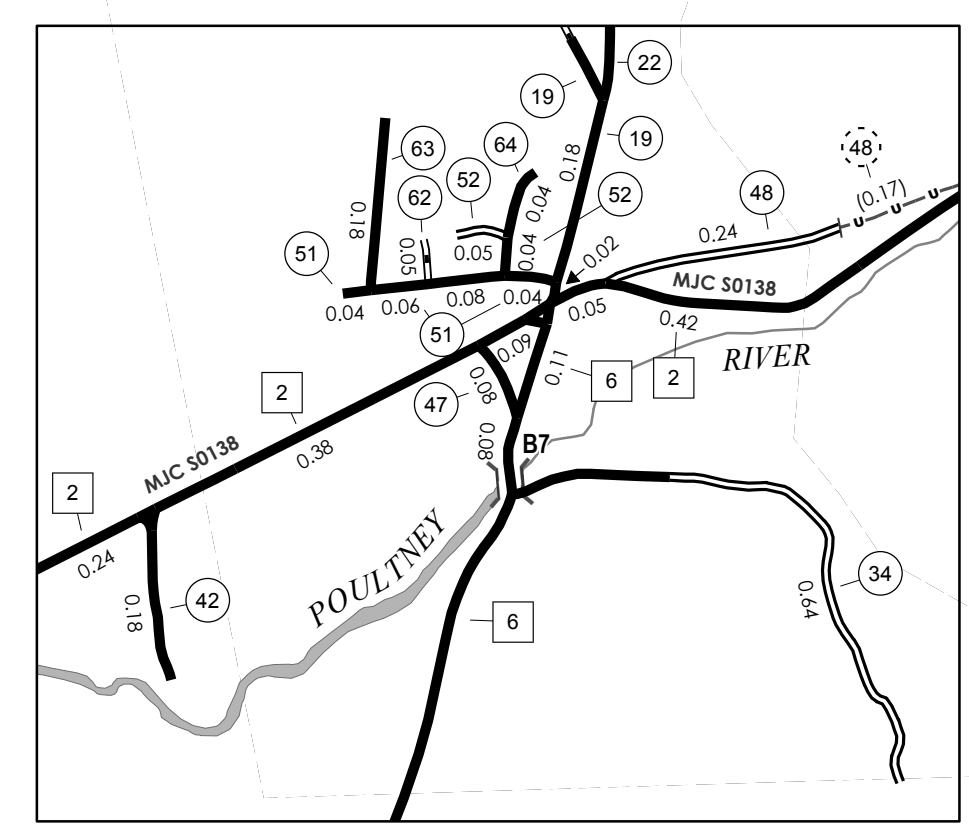
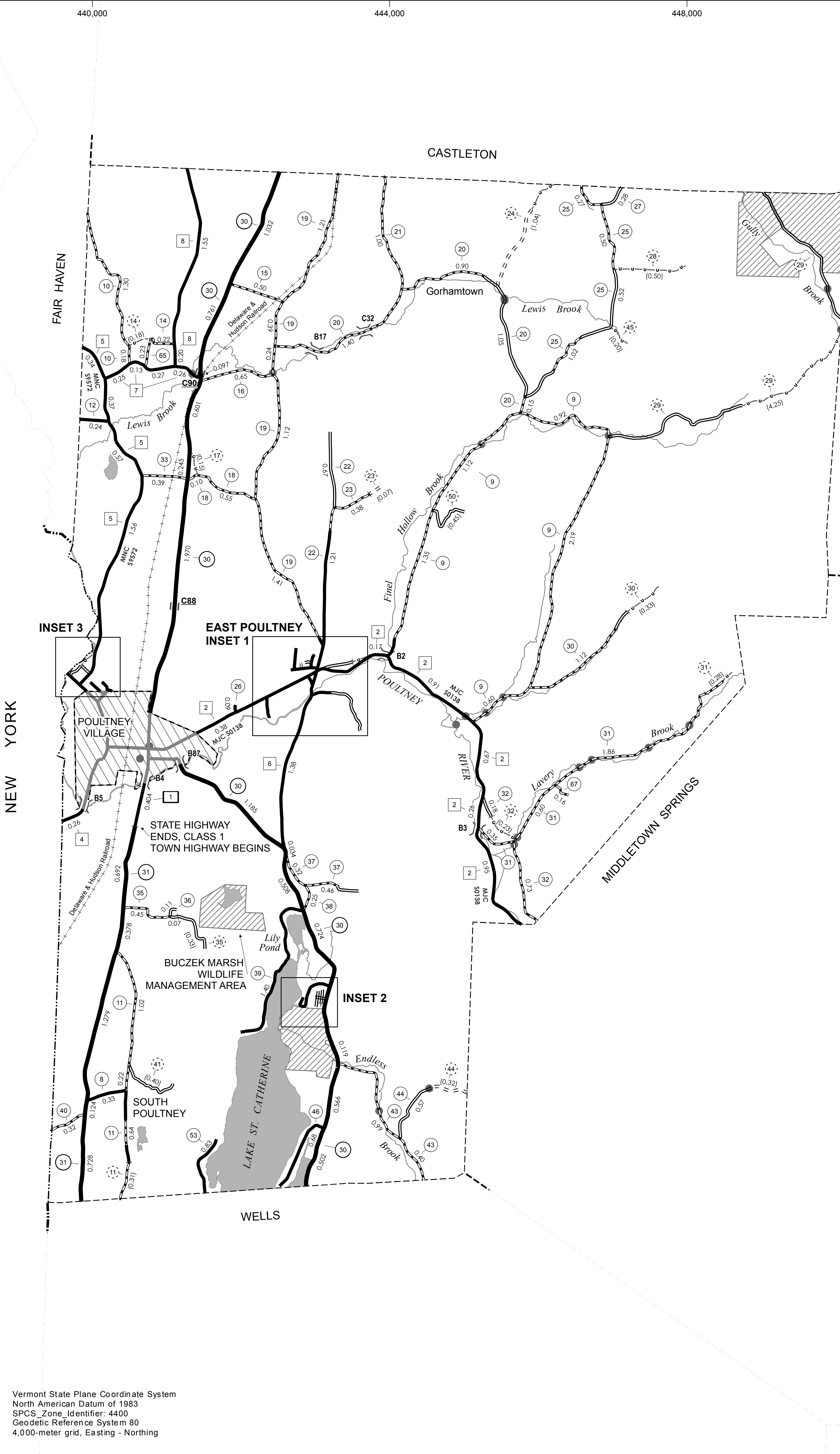
STRUCTURES:
Town short structures (bridges or culverts from 6-feet to less than 20-feet) are drawn from the Vermont Online Bridge & Culvert Inventory Tool (VOBCIT) database.
NOTE: Town shorts are not consistently tagged within VOBCIT.

SURFACE WATERS:
The surface waters are from the Vermont Hydrological Dataset (VHD). Only the named streams are shown.

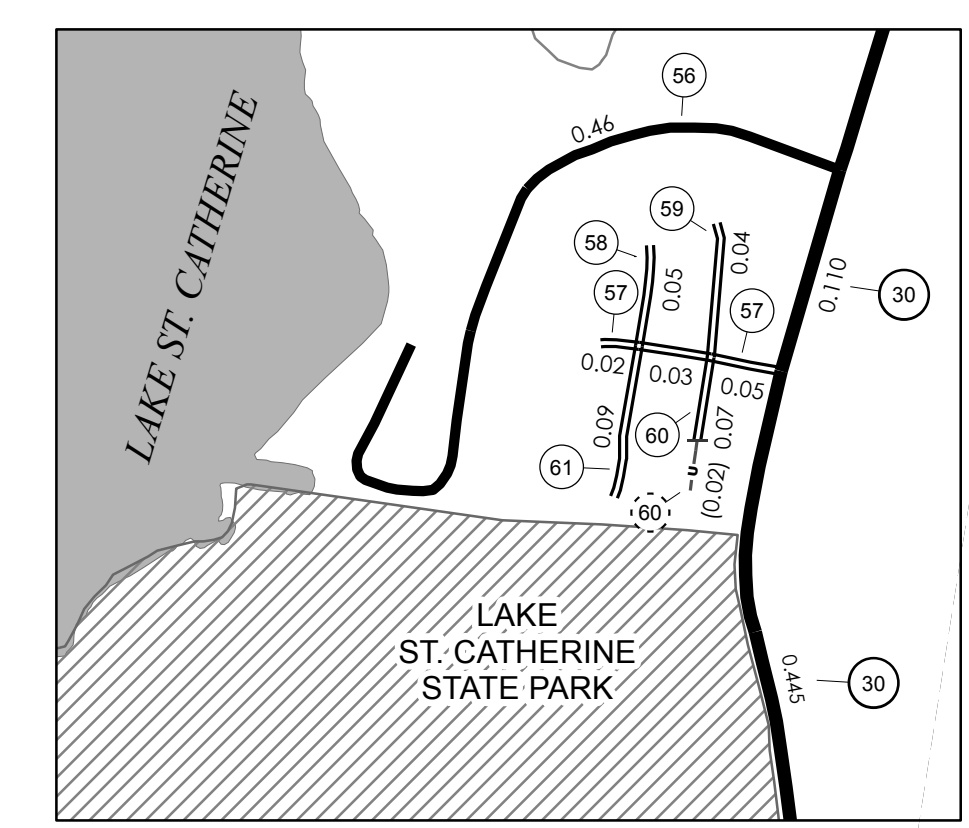
DISCLAIMER:

The untraveled highways (laid-out town highways), discontinued highways, and legal trails shown hereon are those of which the Agency of Transportation has record; others may exist.

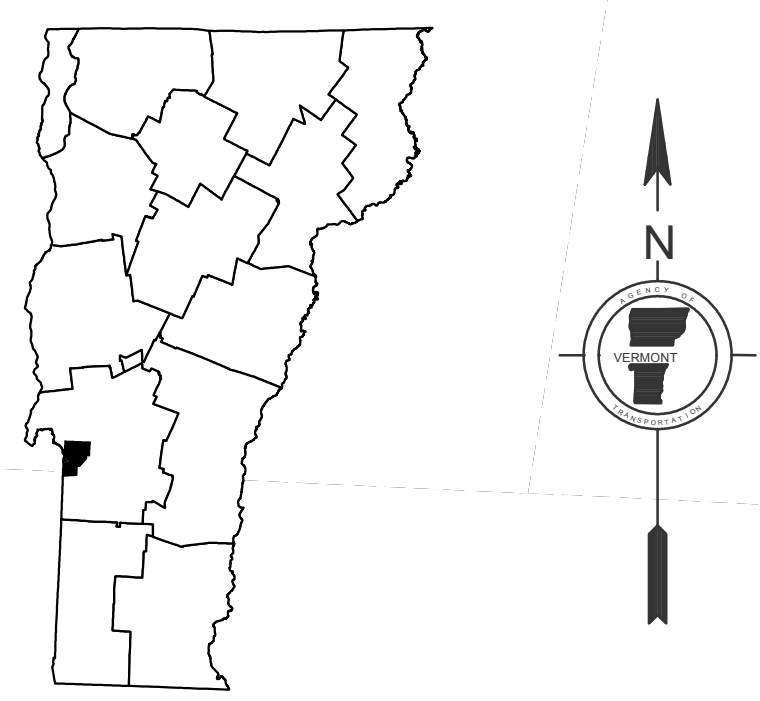
Highway and bridge data by the Agency of Transportation. All other data from the Vermont Center for Geographic Information.



EAST POULTNEY INSET 1
INSET SCALE 1:12672
0 0.2 0.4 Miles



INSET 2
INSET SCALE 1:6336
0 0.1 0.2 Miles

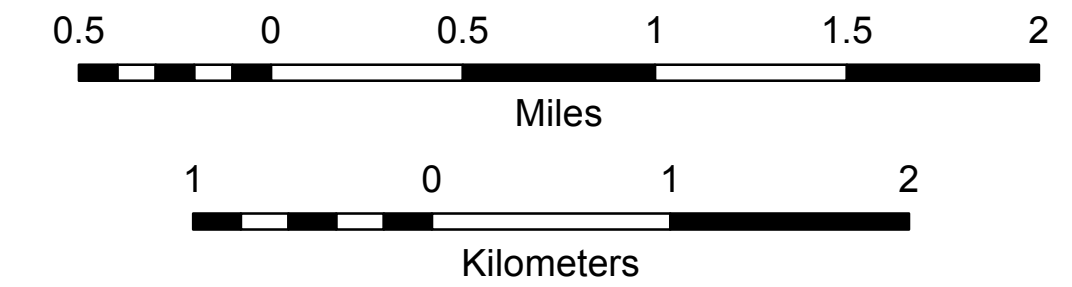


VERMONT GENERAL HIGHWAY MAP
Town of Poultney

RUTLAND COUNTY
Transportation District #3
Prepared by the
Vermont Agency of Transportation
Division of Policy, Planning & Intermodal Development
in cooperation with
U.S. Department of Transportation
Federal Highway Administration

Mileage as of February 10, 2011
Map prepared October 24, 2011

SCALE 1:31,680



Vermont State Plane Coordinate System
North American Datum of 1983
SPCS Zone Identifier: 4400
Geodetic Reference System 80
4,000-meter grid, Easting - Northing