

TOWN HWY. No.	LENGTH IN MILES CLASS 3	LENGTH IN MILES CLASS 4	TOWN HWY. No.	LENGTH IN MILES CLASS 3	LENGTH IN MILES CLASS 4
4	3.62		38	0.21	
5	2.23		39		(0.60)
6	1.51		40	1.39	(0.16)
7	0.04		41	0.07	
8	0.70		42	1.86	
9	0.17		43	0.55	
10	1.67	(1.00)	44	1.93	
11	0.70	(1.22)	45	2.79	
12	1.27		46	0.70	
13	0.53		47	0.83	
14	0.40	(0.50)	48	0.16	
15	0.81	(0.50)	49		(0.70)
16	0.70		50	0.10	
17	2.35	(0.81)	52	0.04	
18	1.05		53	0.02	
19	0.75	(0.45)	54	0.02	
20	1.30	(0.42)	55	0.17	
21	0.49		56	0.17	
22	1.00		57	0.93	
23	1.70		58	0.22	
24	1.62	(0.65)	59		(0.35)
25	0.35	(0.03)	60	0.20	
26	0.17		61	0.56	
27	1.79		62	0.31	
28	0.20		63	0.04	
29	0.34	(0.26)	64	0.15	
30	1.74		65	0.38	
31	0.16	(0.09)	66	0.10	
32	0.16	(1.54)	67	0.11	
33	0.17		68	0.60	
34	1.11		69	0.13	
35	0.32		70		(0.03)
36	0.25	(1.57)	71		(0.06)
37	1.52	(0.33)	TOTAL	47.53	11.27

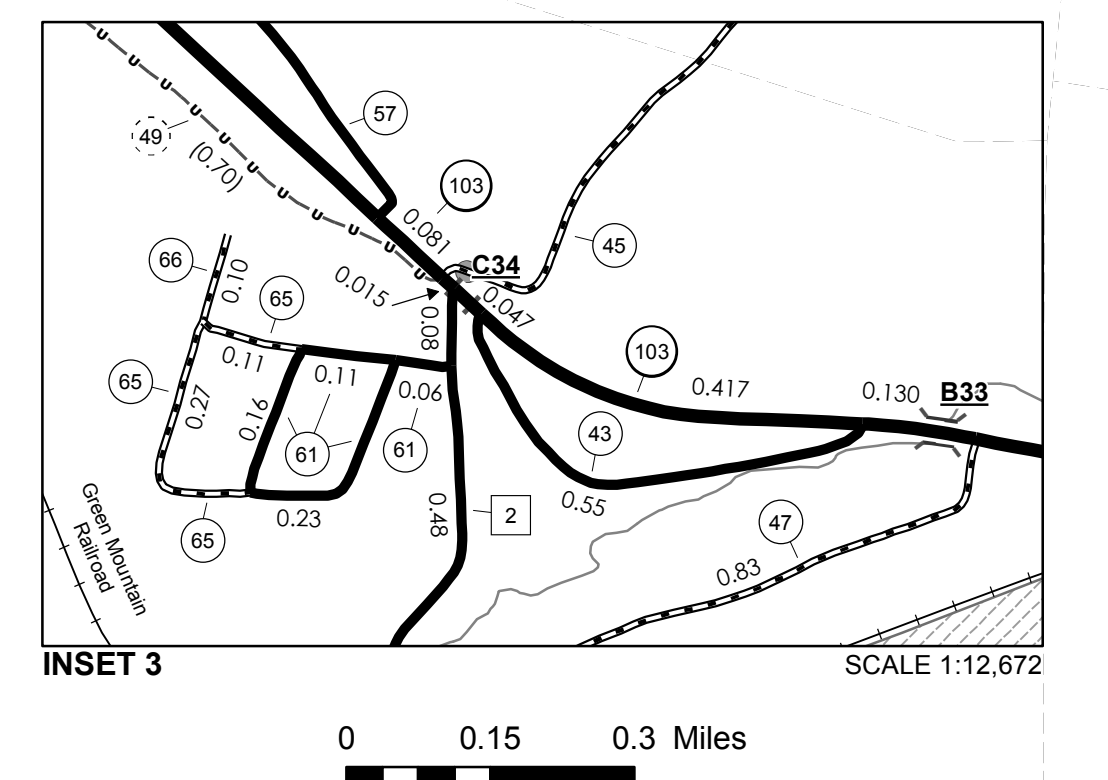
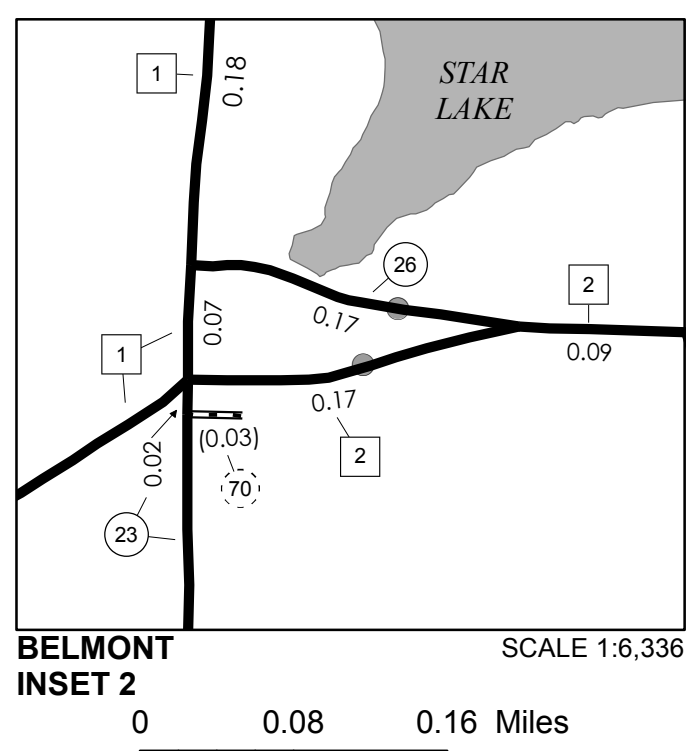
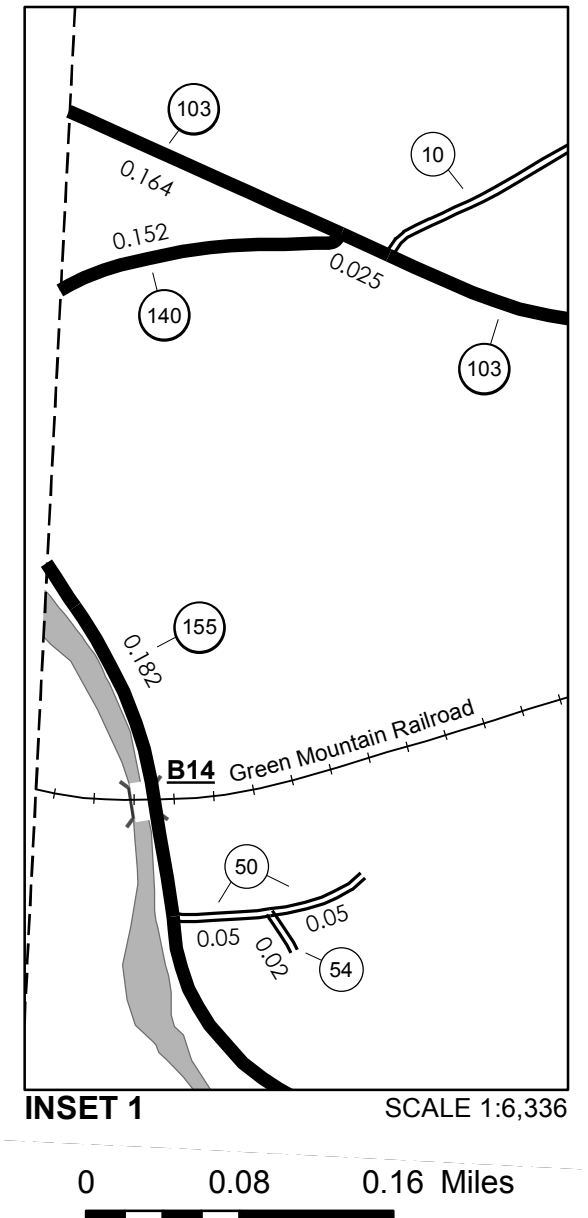
TOWN HWY. No. 25 (0.12)  
 29 (0.18)  
 60 (0.21)  
**TOTAL 0.51**

\*The sections of the town highways listed above are legally Class 3, but have been deemed "Not Up To Standard" and are functionally Class 4 Town Highways

**MILEAGE SUMMARY**

CLASS 2		
TH-1	6.780	
TH-2	3.830	
TOTAL CLASS 2		10.610
CLASS 3		
TOTAL CLASS 3		47.53
TOTAL TOWN		58.140
STATE HIGHWAY		
VT-103	7.683	
VT-140	0.152	
VT-155	7.603	
TOTAL STATE HIGHWAY		15.438
TOTAL STATE		15.438

**TOTAL, TRAVELED HIGHWAYS, FEB. 10, 2015: 73.578**  
 (Excludes Class 4, Legal Trail, and Unidentified Corridor Mileage)



- HIGHWAYS**
  - INTERSTATE
  - U.S. ROUTE
  - STATE ROUTE
  - CLASS 1
  - CLASS 2
  - CLASS 3
  - CLASS 4
  - LEGAL TRAIL
- INTERSTATE OR DIVIDED HIGHWAY
- STATE - HARD SURFACE OR PAVED
- TOWN - HARD SURFACE OR PAVED
- GRAVEL
- SOIL OR GRADED AND DRAINED EARTH
- UNIMPROVED OR PRIMITIVE
- IMPASSABLE OR UNTRAVELED
- LEGAL TRAIL
- DISCONTINUED
- HIGHWAY CLASS CHANGE
- RAILROAD
- INACTIVE RAILROAD
- NFR NATIONAL FOREST ROAD
- SFH STATE FOREST HIGHWAY
- P PARK AND RIDE

**DISCLAIMER:**  
 The untraveled highways (laid-out town highways), discontinued highways, and legal trails hereon are those of which the Agency of Transportation has record; others may exist.

Highway and bridge data by the Agency of Transportation. Town short structures are drawn from the Vermont Online Bridge & Culvert Inventory Tool (VOBCIT) database. All other data from the Vermont Center for Geographic Information. Only named streams are shown.

- PUBLIC LAND - GREEN MOUNTAIN NATIONAL FOREST
- PUBLIC LAND - STATE/MUNICIPAL
- POLITICAL SUBDIVISIONS**
  - STATE BOUNDARY
  - COUNTY BOUNDARY
  - TOWN BOUNDARY
  - VILLAGE BOUNDARY
  - URBAN COMPACT BOUNDARY
- WATER BODY
- STREAM OR BROOK
- BRIDGE OR CULVERT**
  - BRIDGE OR CULVERT > 20'
  - BRIDGE OR CULVERT 6' - 20'
  - VOBCIT BRIDGE
  - VOBCIT CULVERT > 6'
- B34 / C34 STATE BRIDGE OR CULVERT IDENTIFIER
- B34 / C34 TOWN BRIDGE OR CULVERT IDENTIFIER

Vermont State Plane Coordinate System  
 North American Datum of 1983  
 SPCS\_Zone\_Identifier: 4400  
 Geodetic Reference System 80  
 4,000-meter grid, Easting - Northing

**VERMONT**  
**GENERAL HIGHWAY MAP**  
**Town of Mount Holly**

RUTLAND COUNTY  
 Transportation District #3  
 Prepared by the  
 Vermont Agency of Transportation  
 Division of Policy, Planning and Intermodal Development  
 in cooperation with  
 U.S. Department of Transportation  
 Federal Highway Administration

Mileage as of February 10, 2015  
 Map prepared June 09, 2015  
 SCALE 1:31,680

0.5 0 0.5 1 1.5 2  
 Miles  
 0.5 0 0.5 1 1.5 2  
 Kilometers