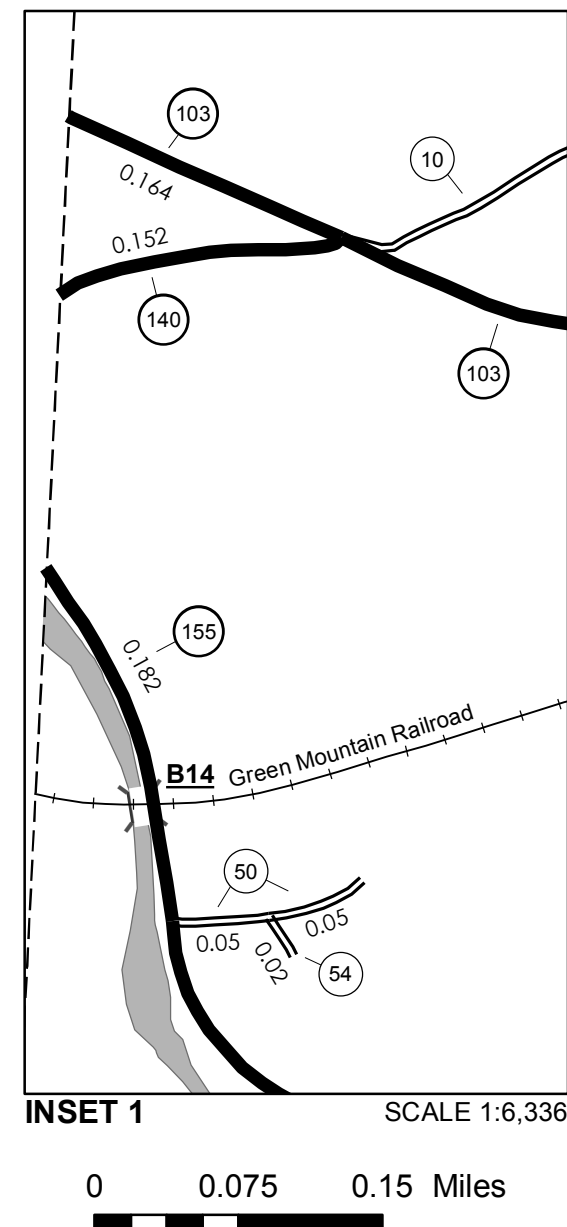


TOWN HWY. No.	LENGTH IN MILES CLASS 3	LENGTH IN MILES CLASS 4	TOWN HWY. No.	LENGTH IN MILES CLASS 3	LENGTH IN MILES CLASS 4	TOWN HWY. No.	LENGTH IN MILES CLASS 3	LENGTH IN MILES CLASS 4
4	3.62		27	1.79		50	0.10	
5	2.23		28	0.20		52	0.04	
6	1.51		29	0.34	(0.26)	53	0.02	
7	0.04		30	1.74		54	0.02	
8	0.70		31	0.16	(0.09)	55	0.17	
9	0.17		32	0.16	(1.54)	56	0.17	
10	1.67	(1.00)	33	0.17		57	0.83	
11	0.70	(1.22)	34	1.11		58	0.22	
12	1.27		35	0.32		59		(0.35)
13	0.53		36	0.25	(1.57)	60	0.20	
14	0.40	(0.50)	37	1.52	(0.33)	61	0.56	
15	0.81	(0.50)	38	0.21		62	0.31	
16	0.70		39		(0.60)	63	0.04	
17	2.35	(0.81)	40	1.39	(0.16)	64	0.15	
18	1.05		41	0.07		65	0.38	
19	0.75	(0.45)	42	1.86		66	0.10	
20	1.30	(0.42)	43	0.55		67	0.11	
21	0.49		44	1.93		68	0.60	
22	1.00		45	2.79		69	0.13	
23	1.70		46	0.70		70		(0.03)
24	1.62	(0.65)	47	0.83		71		(0.06)
25	0.35	(0.03)	48	0.16		TOTAL	47.53	11.27
26	0.17		49		(0.70)			

MILEAGE SUMMARY

CLASS 2		
TH-1	6.780	
TH-2	3.830	
TOTAL CLASS 2		10.610
CLASS 3		
TOTAL CLASS 3		47.53
TOTAL TOWN		58.140
STATE HIGHWAY		
VT-103	7.683	
VT-140	0.152	
VT-155	7.603	
TOTAL STATE HIGHWAY		15.438
TOTAL STATE		15.438
TOTAL TRAVELED HIGHWAYS, FEB. 10, 2013:	73.578	

(Excludes Class 4, Legal Trail, and Undeveloped Corridor Mileage)



TOWN HWY. No.	LENGTH IN MILES "NOT UP TO STANDARD"
25	(0.12)
29	(0.18)
60	(0.21)
TOTAL	0.51

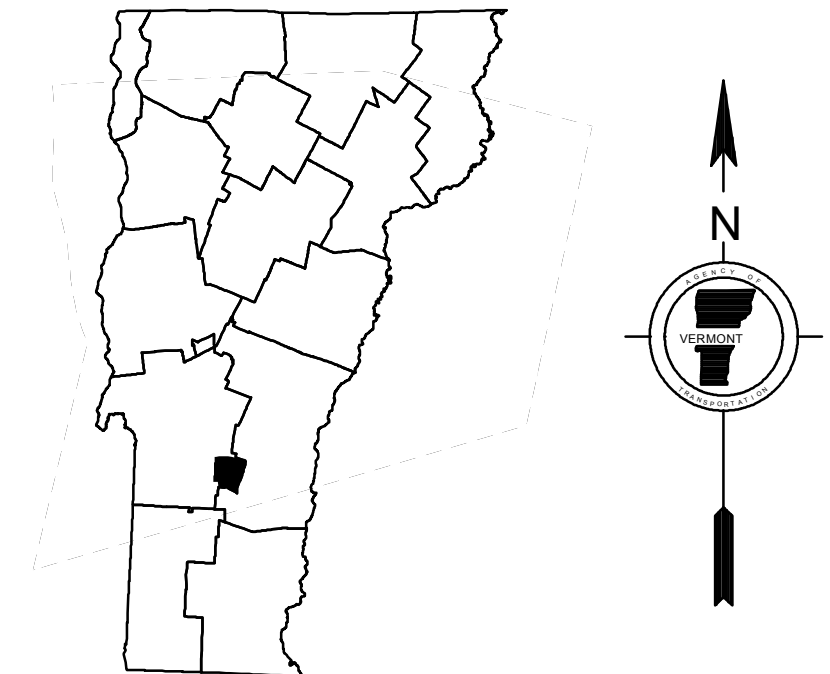
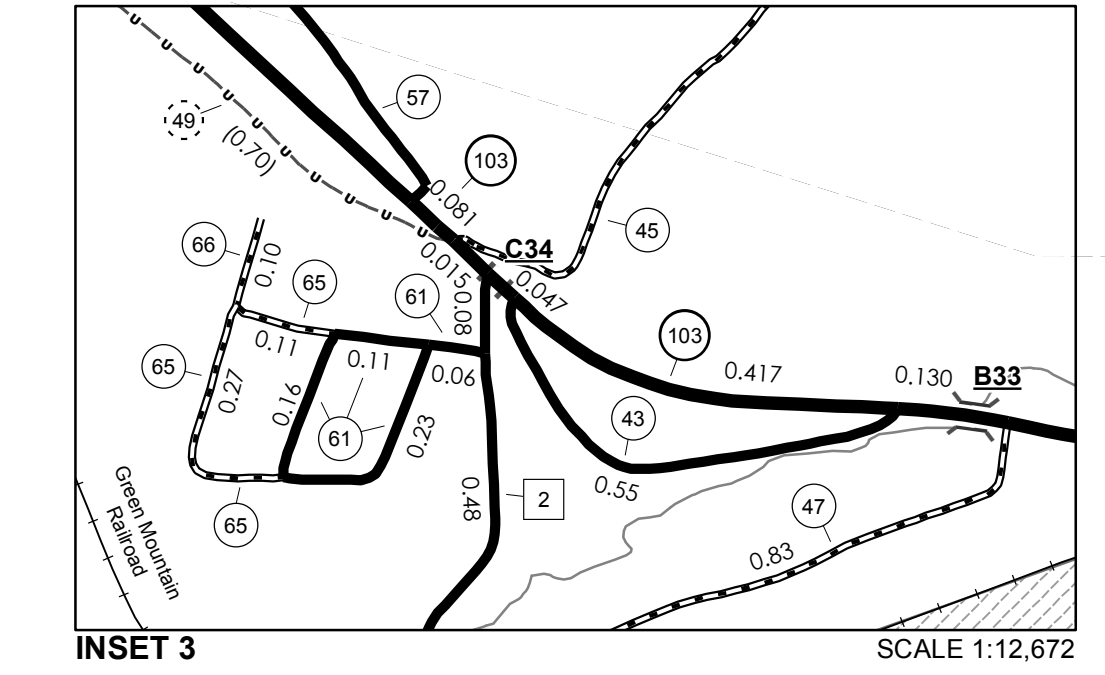
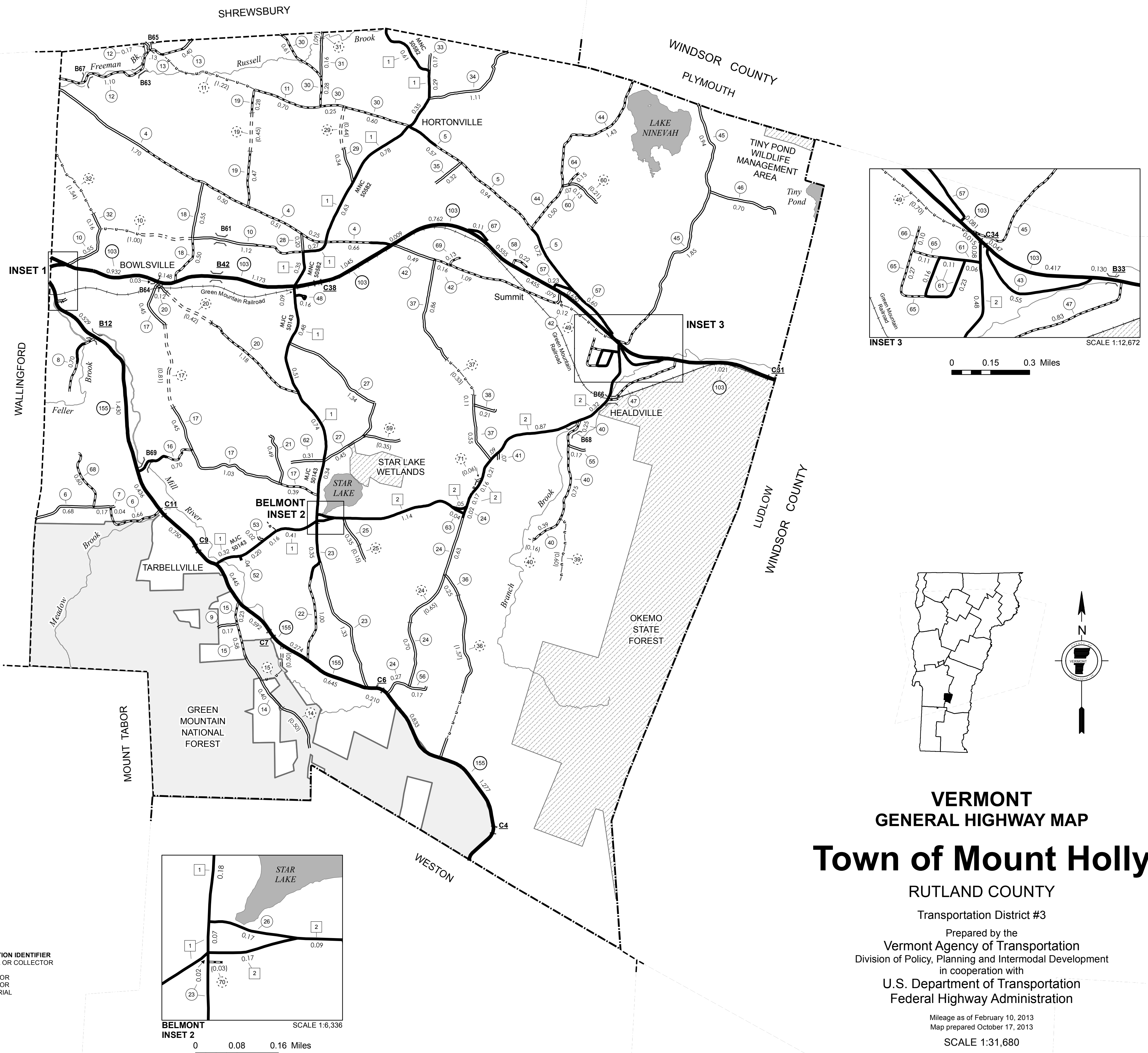
*The sections of the town highways listed above are legally Class 3, but have been deemed "Not Up To Standard" and are functionally Class 4 Town Highways

- HIGHWAYS**
- INTERSTATE OR DIVIDED HIGHWAY
 - INTERSTATE
 - U.S. ROUTE
 - STATE ROUTE
 - CLASS 1
 - CLASS 2
 - CLASS 3
 - CLASS 4
 - LEGAL TRAIL
 - INTERSTATE OR DIVIDED HIGHWAY
 - STATE - HARD SURFACE OR PAVED
 - TOWN - HARD SURFACE OR PAVED
 - GRAVEL
 - SOIL OR GRADED AND DRAINED EARTH
 - UNIMPROVED OR PRIMITIVE
 - IMPASSABLE OR UNTRAVELED
 - LEGAL TRAIL
 - DISCONTINUED
 - HIGHWAY CLASS CHANGE
 - RAILROAD
 - INACTIVE RAILROAD
 - NATIONAL FOREST ROAD
 - STATE FOREST HIGHWAY
 - PARK AND RIDE
- POLITICAL SUBDIVISIONS**
- STATE BOUNDARY
 - COUNTY BOUNDARY
 - TOWN BOUNDARY
 - VILLAGE BOUNDARY
 - URBAN COMPACT BOUNDARY
 - WATER BODY
 - STREAM OR BROOK
- BRIDGE OR CULVERT**
- BRIDGE OR CULVERT GREATER THAN 20'
 - BRIDGE OR CULVERT 6' - 20'
- FEDERAL CLASSIFICATION IDENTIFIER**
- FAU URBAN ARTERIAL OR COLLECTOR
 - MA MINOR ARTERIAL
 - MJC MAJOR COLLECTOR
 - MNC MINOR COLLECTOR
 - PA PRINCIPAL ARTERIAL
- B34 / C34** STATE BRIDGE OR CULVERT IDENTIFIER
B34 / C34 TOWN BRIDGE OR CULVERT IDENTIFIER

DISCLAIMER:
 The untraveled highways (laid-out town highways), discontinued highways, and legal trails hereon are those of which the Agency of Transportation has record; others may exist.

Highway and bridge data by the Agency of Transportation. All other data from the Vermont Center for Geographic Information. Only named streams are shown.

Vermont State Plane Coordinate System
 North American Datum of 1983
 SPCS_Zone_Identifier: 4400
 Geodetic Reference System 80
 4,000-meter grid, Easting - Northing



VERMONT
GENERAL HIGHWAY MAP
Town of Mount Holly
 RUTLAND COUNTY
 Transportation District #3
 Prepared by the
 Vermont Agency of Transportation
 Division of Policy, Planning and Intermodal Development
 in cooperation with
 U.S. Department of Transportation
 Federal Highway Administration

