

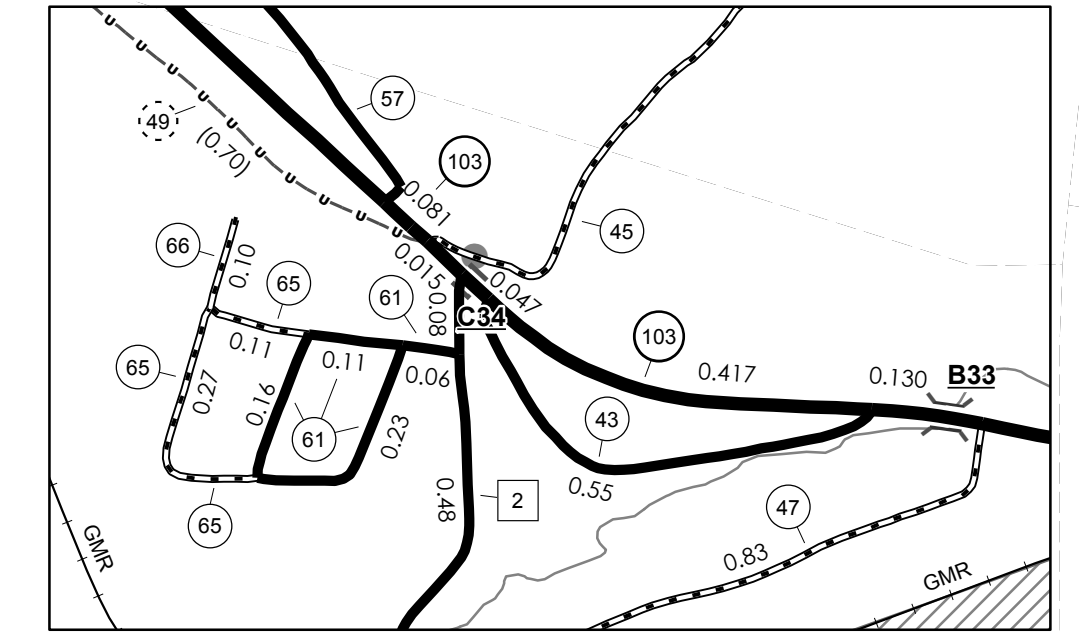
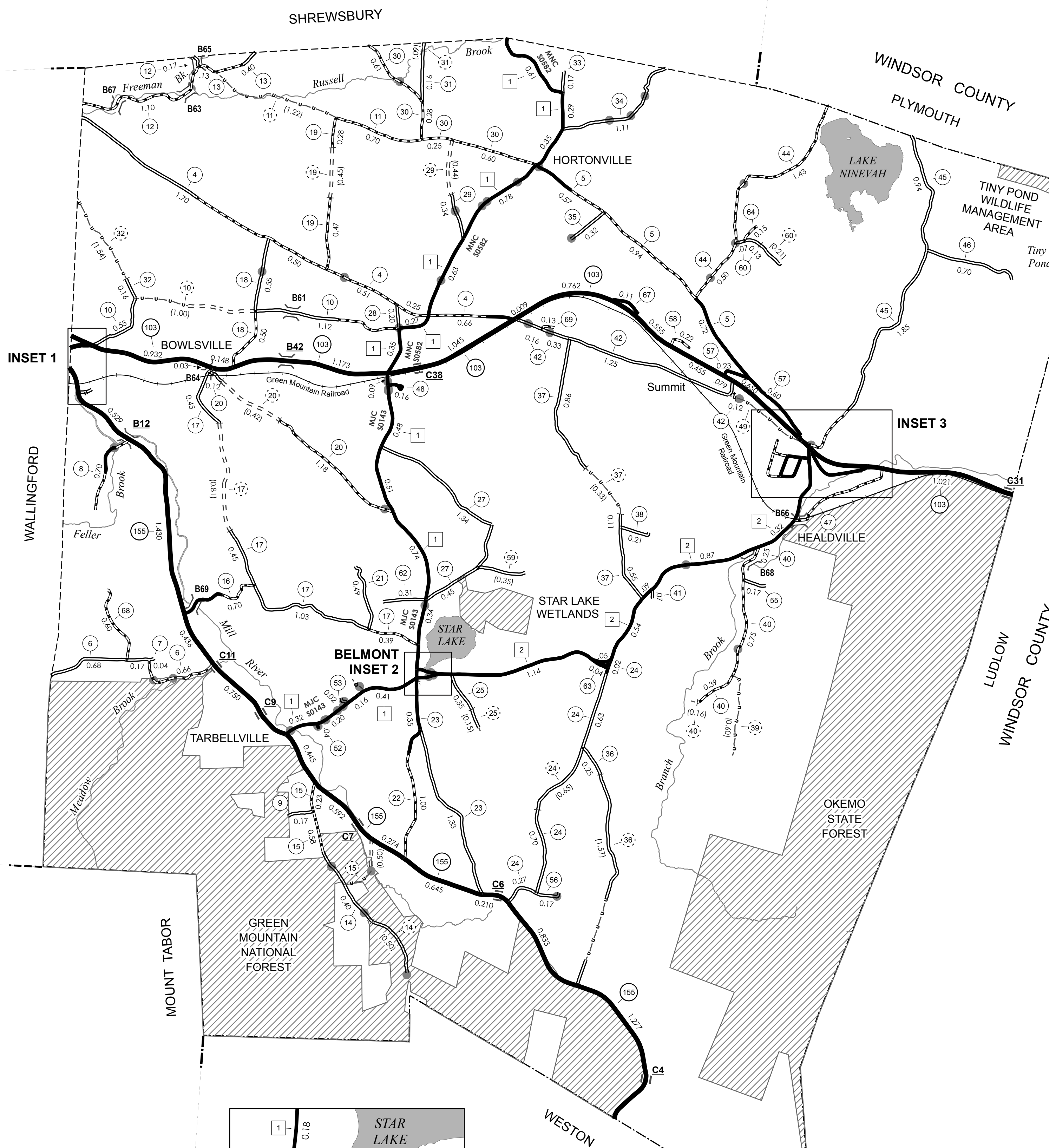
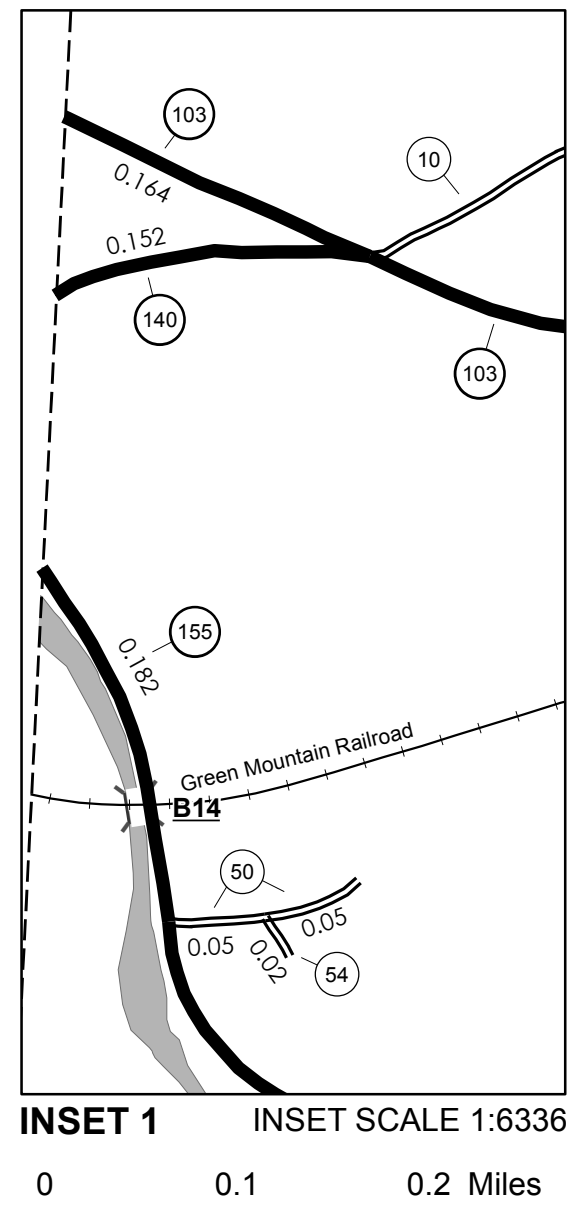
TOWN HWY. NO.	CLASS 3	CLASS 4	LENGTH IN MILES		
4	3.62		37	1.52	(0.33)
5	2.23		38	0.21	
6	1.51		39		(0.60)
7	0.04		40	1.39	(0.16)
8	0.70		41	0.07	
9	0.17		42	1.86	
10	1.67	(1.00)	43	0.55	
11	0.70	(1.22)	44	1.93	
12	1.27		45	2.79	
13	0.53		46	0.70	
14	0.40	(0.50)	47	0.83	
15	0.81	(0.50)	48	0.16	
16	0.70		49		(0.70)
17	2.35	(0.81)	50	0.10	
18	1.05		52	0.04	
19	0.75	(0.45)	53	0.02	
20	1.30	(0.42)	54	0.02	
21	0.49		55	0.17	
22	1.00		56	0.17	
23	1.70		57	0.83	
24	1.62	(0.65)	58	0.22	
25	0.35	(0.03)	59		(0.35)
26		(0.12)	60	0.20	
27	0.17		61		(0.21)
28	1.79		62	0.56	
29	0.20		63	0.31	
30	0.34	(0.26)	64	0.04	
31	0.16	(0.18)	65	0.15	
32	1.74		66	0.38	
33	0.16	(0.09)	67	0.10	
34	0.16	(1.54)	68	0.11	
35	0.17		69	0.60	
36	1.11		70	0.13	
	0.32				(0.03)
	0.25	(1.57)			
TOTAL			47.53	11.72	

* This portion of town highway is Class 3, but is functionally Class 4

MILEAGE SUMMARY

CLASS 2		
TH-1	6.780	
TH-2	3.830	
TOTAL CLASS 2	10.610	
CLASS 3		
TOTAL CLASS 3	47.530	
TOTAL TOWN	58.140	
STATE HIGHWAY		
VT-103	7.683	
VT-140	0.152	
VT-155	7.603	
TOTAL STATE HIGHWAY	15.438	
TOTAL STATE	15.438	

TOTAL, TRAVELED HIGHWAYS, FEB. 10, 2011: 73.578
(Excludes Class 4, Legal Trail, and Unidentified Corridor Mileage)



0 0.2 0.4 Miles

- HIGHWAYS**
- INTERSTATE
 - U.S. ROUTE
 - STATE ROUTE
 - CLASS 1
 - CLASS 2
 - CLASS 3
 - CLASS 4
 - LEGAL TRAIL
 - INTERSTATE OR DIVIDED HIGHWAY
 - STATE - HARD SURFACE OR PAVED
 - TOWN - HARD SURFACE OR PAVED
 - GRAVEL
 - SOIL OR GRADED AND DRAINED EARTH
 - UNIMPROVED OR PRIMITIVE
 - IMPASSABLE OR UNTRAVELED
 - LEGAL TRAIL
 - DISCONTINUED
 - HIGHWAY CLASS CHANGE
 - RAILROAD
 - INACTIVE RAILROAD

- POLITICAL SUBDIVISIONS**
- STATE BOUNDARY
 - COUNTY BOUNDARY
 - TOWN BOUNDARY
 - VILLAGE BOUNDARY
 - URBAN COMPACT BOUNDARY
 - WATER BODY
 - STREAM OR BROOK
 - BRIDGE OR CULVERT
 - BRIDGE OR CULVERT GREATER THAN 20'
 - BRIDGE OR CULVERT 6' - 20'
 - TOWN SHORT STRUCTURE
- B34 / C34 STATE BRIDGE OR CULVERT IDENTIFIER**
B34 / C34 TOWN BRIDGE OR CULVERT IDENTIFIER
- FEDERAL CLASSIFICATION IDENTIFIER**
- FAU URBAN ARTERIAL OR COLLECTOR
 - MA MINOR ARTERIAL
 - MJC MAJOR COLLECTOR
 - MNC MINOR COLLECTOR
 - PA PRINCIPAL ARTERIAL

STRUCTURES - SURFACE WATER NOTE:

STRUCTURES:
Town short structures (bridges or culverts from 6-feet to less than 20-feet) are drawn from the Vermont Online Bridge & Culvert Inventory Tool (VOBCIT) database.
NOTE: Town shorts are not consistently tagged within VOBCIT.

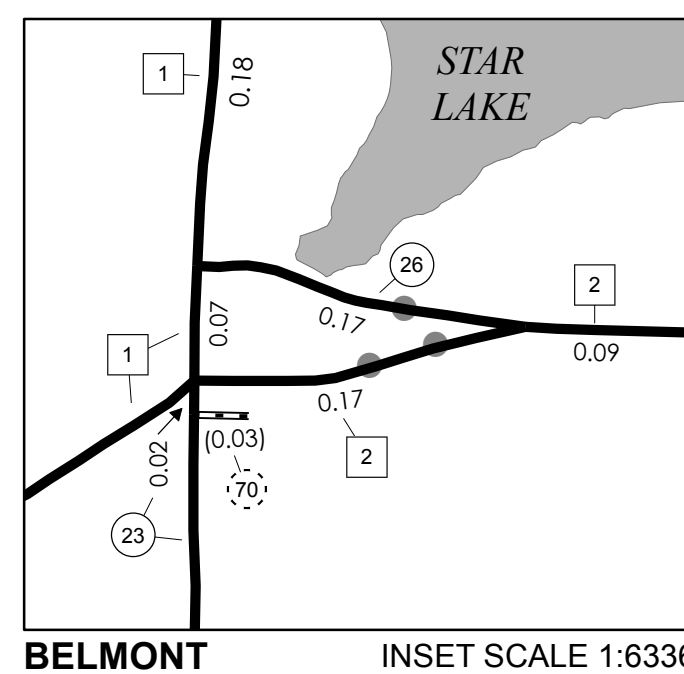
SURFACE WATERS:
The surface waters are from the Vermont Hydrological Dataset (VHD). Only the named streams are shown.

DISCLAIMER:

The untraveled highways (laid-out town highways), discontinued highways, and legal trails shown hereon are those of which the Agency of Transportation has record; others may exist.

Highway and bridge data by the Agency of Transportation. All other data from the Vermont Center for Geographic Information.

Vermont State Plane Coordinate System
North American Datum of 1983
SPCS Zone Identifier: 4400
Geodetic Reference System 80
4,000-meter grid, Easting - Northing



0 0.1 0.2 Miles

VERMONT
GENERAL HIGHWAY MAP
Town of Mount Holly

RUTLAND COUNTY

Transportation District #3

Prepared by the
Vermont Agency of Transportation
Division of Policy, Planning & Intermodal Development
in cooperation with
U.S. Department of Transportation
Federal Highway Administration

Mileage as of February 10, 2011
Map prepared October 25, 2011

SCALE 1:31,680

0.5 0 0.5 1 1.5 2 Miles

1 0 1 2 Kilometers